

Odenton Library Community Park Public Meeting

30% Schematic Design
Project No. P584400
Contract No. P584401

Presented by:

Anne Arundel County Department of Public Works
with the Department of Recreation and Parks
February 28, 2023 6:00-7:30PM - Odenton Library



DPWandYOU.com | *Making a difference, together*



Important Meeting Information

This will be an in-person meeting and will be audio recorded. Therefore the audience will be able to view and hear the meeting. The URL link for the meeting will be posted on the OPZ website within 24 hours of the meeting.

For questions and comments:

- Please hold all questions until the end of the presentation
- Meeting Minutes will be shared with the Public. The Meeting Minutes will be: Posted on the DRP website, Posted on the OPZ Community Meetings website, and Mailed to the residents that received the mailed notice of this meeting

Additional questions, up to 14 days beyond tonight's meeting, may be submitted through the Office of Planning and Zoning website:

<https://www.aacounty.org/departments/planning-and-zoning/development/community-meetings/past-meetings-comments/>



Meeting Agenda

- Introductions
- Meeting Purpose
- Community Meeting Key Project Information
- Project Location
- Project Goals and Scope
- Existing Environmental Features
- Proposed Features and Amenities
- Impacts and Challenges
- Anticipated Schedule
- Q & A



Introductions

- **Anne Arundel County Department of Public Works**
Emma Pfefferkorn, Project Manager
Jacquelyn Barry, Assistant Manager, Customer Relations



- **Anne Arundel County Department of Recreation and Parks**
Bruce Bruchey, Chief of Planning and Construction



- **Design Consultant - Brudis & Associates, Inc.**
Redeat Lodamo, P.E., PTOE, Senior Project Manager
Jeremy Gipe, P.E., Project Engineer



DPWandYOU.com | *Making a difference, together*



Meeting Purpose

- Per Anne Arundel County Code 2005, Section 17-2-107 - Community Meetings:
 - Meetings of this kind are held when development of a commercial, industrial, or institutional use, or an active recreational use adjoins a residentially zoned and developed lot
 - Requirement to hold these meetings and gather public input before submitting plans



Community Meeting Key Project Information

- Project Name: Odenton Library Community Park Phase 1(CIP#P584400)
- Address: 1325 Annapolis Road, Odenton MD 21113
- Owner: Anne Arundel County
- Existing Use: Library, Open Space
- Grading Permit Number: Grading permit application will be submitted during the final phase of design
- Water and Sewer Type: None proposed
- Impacted Schools: Not applicable
- Number of Proposed Lots: Not applicable
- Zoning: Odenton Core (O-COR) – part of the Odenton Growth Management Area
- Critical Areas: Not located in any Critical Areas



Community Meeting Key Project Information

- Type of Project: Public Capital Improvement Project
- Total Limit of Disturbance (LOD) = 2.04 acres
- 34 existing parking spaces, 47 proposed parking spaces
- Stormwater Management (SWM) Measures include one bioswale, permeable pavement, sheet flow to conservation areas, and a porous playground surface
- Plans maximize SWM treatment with minimum impact to forested or environmentally sensitive areas
- Approximate Road Configuration:
 - No new roads are proposed, but existing parking is expanded



Project Location

- Proposed community park located across from the Odenton Public Library on the other side of Winmeyer Ave
- The project area is bounded by abandoned railbed to the south, active railroad to the west, MD 175 on the north and Winmeyer Ave to the east



Project Goals and Scope

- The Odenton Town Center Advisory Committee provided a list of possible amenities for a new park area, and, after coordination with the library, concept designs were later developed
- Ultimately a final concept was selected
- Goal is to take the final concept from the feasibility study and develop it into full construction documents
- Engineering services consist of clearing, grading, sediment control, storm drainage, storm water management, utilities, and landscaping in addition to providing amenities
- Utilize available area west of the library parking lot that could accommodate some passive recreational amenities
- The park would share parking with the library in the southeast quadrant of the park



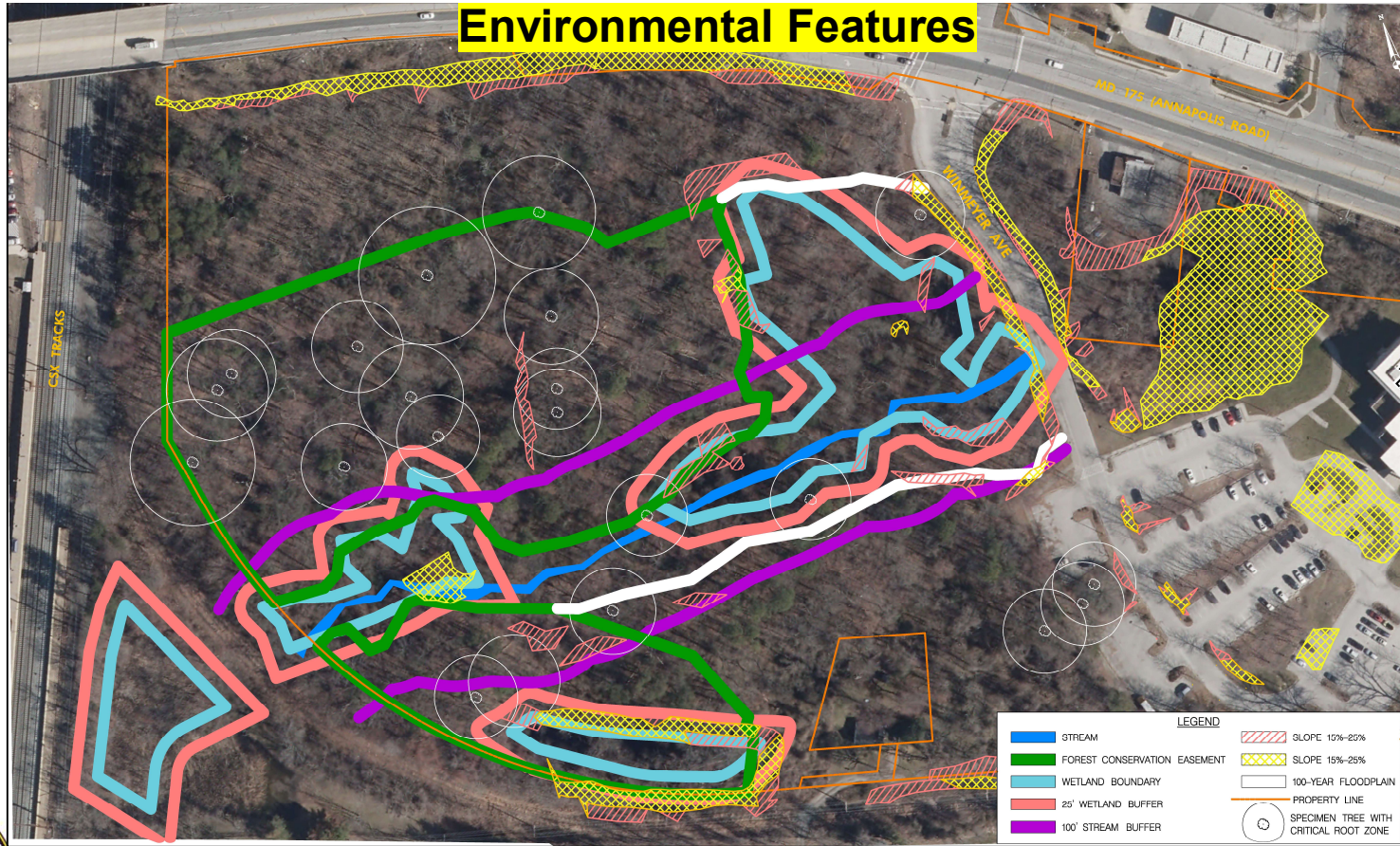
Existing Environmental Features

- Forested Area and Forest Conservation Easement
- Numerous Specimen Trees*
- Waters of The US – Stream and Stream Buffer*
- Wetlands and Wetland Buffer*
- Steep slopes*
- 100-Year Floodplain

*Note: No modifications are anticipated as these features are not impacted



Environmental Features



DPWandYOU.com | *Making a difference, together*



Forest Conservation and Specimen Trees

- Some impact is unavoidable
- Trail designed to minimize impacts to forested area / forest conservation easement
- Vertical alignment of trail to follow existing ground; limits amount of earthwork and grading that could impact trees
- 1.89 acres total of forested area impacted by work
- 0.65 acres impacted within Forest Conservation area
- Specimen trees are not impacted but are within the Limit of Disturbance. Measures will be taken to preserve the trees



Forest Conservation and Specimen Trees

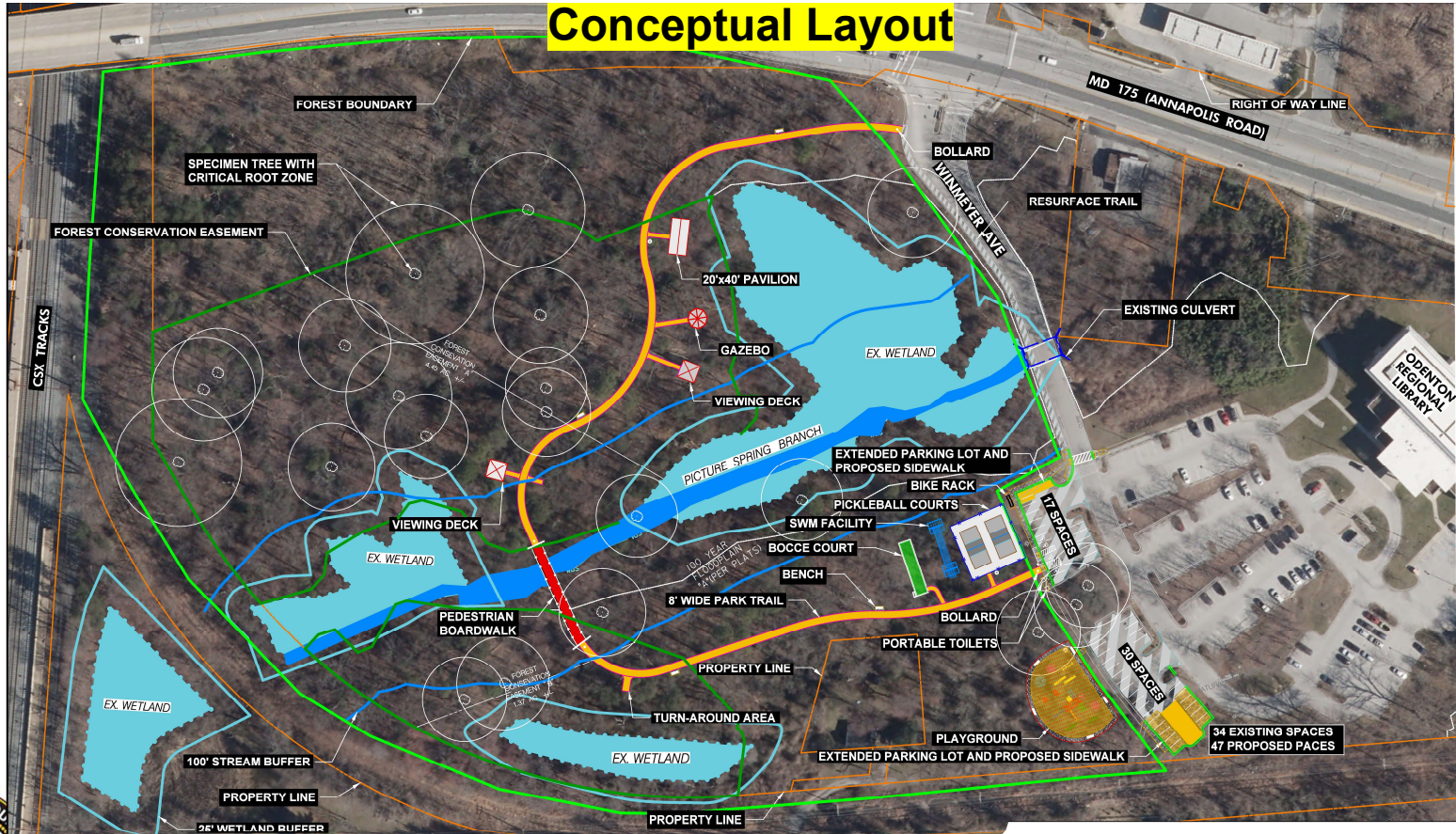


Proposed Features and Amenities

- 8' wide paved park trail approximately 0.25 mile long
- Story trail
- Railroad-themed playground
- Pickleball courts
- Pedestrian bridge / boardwalk
- 40' x 20' pavilion
- Gazebo
- 2 viewing decks
- Additional parking (extended south from existing lot)
- Bike racks and benches
- Lighting (for parking and pickleball courts, and potentially playground area)
- Upgraded sidewalk and ADA-compliant sidewalk ramps



Conceptual Layout



Story Trail

- A story trail provides an innovative and delightful way for children (and adults) to enjoy reading and the outdoors at the same time
- Laminated pages from a children's picture book are installed along an outdoor path. As you walk the path you are directed to the next page in the story
- Estimated 20 locations throughout the trail



Playground

- Located near the existing parking lot
- Railroad-themed*
- 7,300 square feet
- Includes a large composite structure complete with slides, monkey bars, stairs
- Additional slides, swing sets, and climbing equipment
- Pour-In-Place rubber matting
- Sidewalk and benches line the perimeter
- ADA-compliant

*Note: Photo of playground for illustrative purposes only



Impacts and Challenges

Impacts

- Forested area
 - Forest (1.89 acres)
 - Forest Conservation Easement (0.65 acres)
- Waters of the US
 - Stream (temporary)
 - Stream Buffer
- Added impervious areas
- 100-year floodplain (temporary)

Not Impacted

- Specimen trees
- Wetlands and Wetland buffers
- Critical areas or rare, threatened, or endangered species

Challenges

- Acquiring Permitting prior to construction



Anticipated Schedule

- Complete design February 2023 – October 2023
- Bid and Award October 2023 – February 2024
- Obtain permits December 2023
- Construction Beginning Spring 2024



Questions?

Follow Up:

For up to 2 weeks after tonight's meeting, questions and comments may be submitted through the Office of Planning and Zoning website:

<https://www.aacounty.org/departments/planning-and-zoning/development/community-meetings/past-meetings-comments/>

- All responses will be provided by the project team and posted on the County's Community Meeting Calendar Webpage and the Dept. of Recreation and Parks Capital Projects website
- Responses will also be mailed to all parties that were sent the meeting invite

Thank you!



DPWandYOU.com | *Making a difference, together*





Bureau of Utility Operations

24-Hour Emergency
Water Service: (410) 222-8400
Billing Inquiries: (410) 222-1144



Bureau of Engineering

General Inquiries: (410) 222-7500



Bureau of Waste Management Services

Bulk Trash Service / Curbside Collections: (410) 222-6100



Bureau of Watershed Protection and Restoration

General Inquiries: (410) 222-1072



Bureau of Highways

General Inquiries: (410) 222-7321
Snow Line: (410) 222-4040
Email: hwyscustomercare@aacounty.org

Customer Relations:
(410) 222-7582

