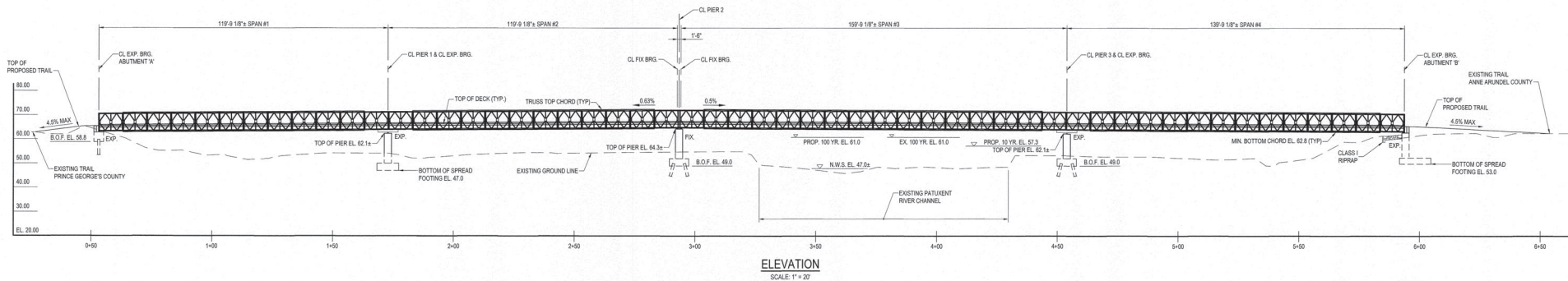


PRINCE GEORGE'S COUNTY

ANNE ARUNDEL COUNTY

PLAN
SCALE: 1" = 20'



ELEVATION
SCALE: 1" = 20'

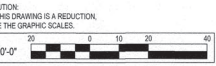
- NOTES:
- FOR BORING LOGS SEE SHEET 4 AND 19.
 - FOR GENERAL NOTES SEE SHEET 35.
 - FOR GEOMETRIC LAYOUT SEE SHEET 36.
 - FOR PILE PLANS SEE SHEET 37.
 - FOR ABUTMENT A PLAN AND ELEVATION SEE SHEET 38.
 - FOR ABUTMENT B PLAN AND ELEVATION SEE SHEET 39.
 - FOR PIER 1 PLAN AND ELEVATION SEE SHEET 40.
 - FOR PIER 2 PLAN AND ELEVATION SEE SHEET 41.
 - FOR PIER 3 PLAN AND ELEVATION SEE SHEET 42.
 - FOR TYPICAL SECTION SEE SHEET 43.
 - FOR STANDARD DETAILS SEE SHEET 44.
 - DIMENSIONS AND ELEVATIONS SHOWN ON THIS SHEET ARE FOR BIDDING PURPOSES ONLY. THE CONTRACTOR SHALL COORDINATE WITH THE SUPERSTRUCTURE FABRICATOR TO LOCATE BEARINGS, SET ELEVATIONS AND SET OTHER NECESSARY DIMENSIONS, AS PART OF THE REQUIRED CONTRACTORS SHOP DRAWINGS SUBMISSION.



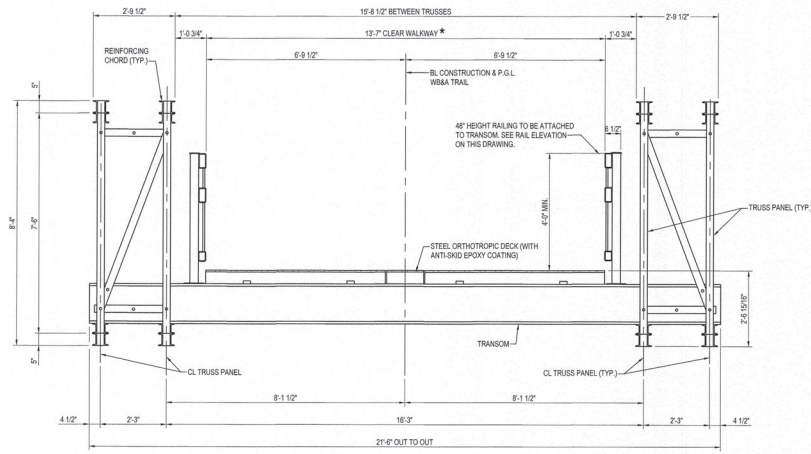
I hereby certify that these documents were prepared or approved by me, and that I am a duly licensed professional engineer under the laws of the State of Maryland.
License #901239 Expiration Date: 10/30/2020

REVISIONS			
NO.	DESCRIPTION	BY	DATE

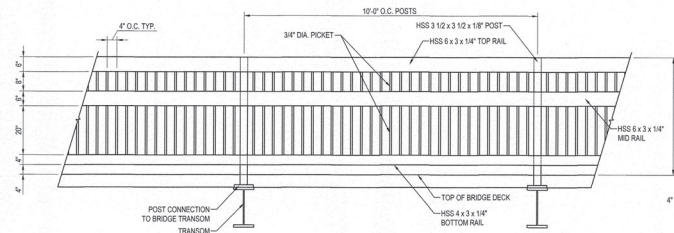
ANNE ARUNDEL COUNTY			
DEPARTMENT OF PUBLIC WORKS			
98253			
APPROVED:	DATE:	APPROVED:	DATE:
<i>[Signature]</i>	8/19/21	<i>[Signature]</i>	8/11/21
CHIEF ENGINEER		PROJECT MANAGER	
APPROVED:	DATE:	APPROVED:	DATE:
<i>[Signature]</i>	8/11/21	<i>[Signature]</i>	8/11/21
ASSISTANT CHIEF ENGINEER		CHIEF, RIGHT-OF-WAY	
SCALE: AS SHOWN		DRAWN BY: D.E.D.	
CHECKED BY: J.M.R.		PROJECT NO.: P393900	
SHEET NO. 34 OF 45		CONTRACT NO.: P393908	



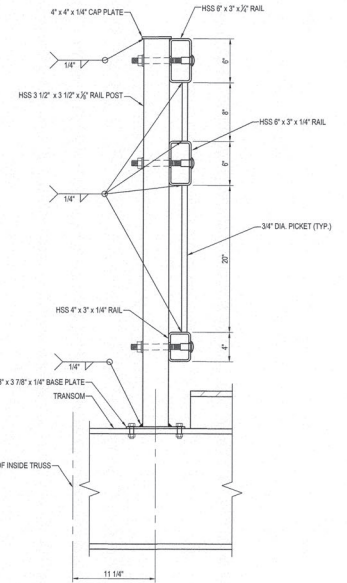
SEE OVERALL PROJECT COVER SHEET FOR SHA AND F&P CONTRACT NUMBERS



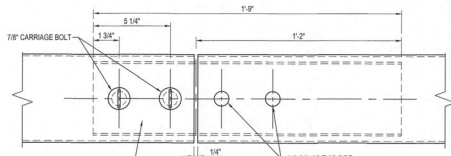
TYPICAL SECTION
SCALE: 1/2" = 1'-0"



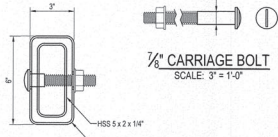
RAIL ELEVATION
SCALE: 1/2" = 1'-0"



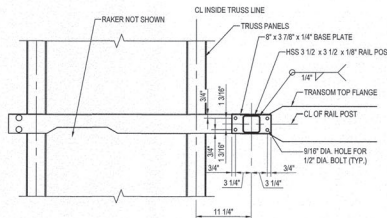
RAIL POST CONNECTION DETAIL AT TRANSOM - ELEVATION
SCALE: 1 1/2" = 1'-0"



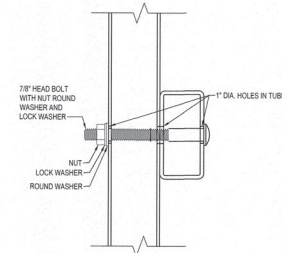
TYPICAL RAIL SPLICE
SCALE: 3\"/>



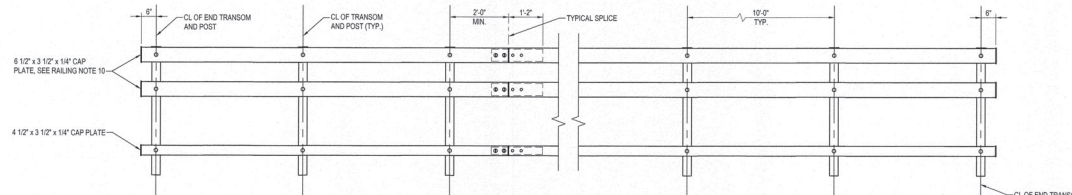
SPLICE TUBE DETAILS
(TOP RAIL SHOWN)
SCALE: 3\"/>



RAIL POST CONNECTION DETAIL AT TRANSOM - PLAN
SCALE: 1\"/>



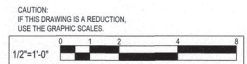
TYPICAL RAIL-TO-POST CONNECTIONS
SCALE: 3\"/>



RAIL LAYOUT - ELEVATION
SCALE: 1/2" = 1'-0"

NOTE: PICKETS NOT SHOWN FOR CLARITY

- RAILING NOTES:**
1. RAILING POSTS, RAILS, PLATES, PICKETS AND FASTENERS SHALL BE GALVANIZED STEEL WITH POWDER COAT FINISH APPLIED AFTER FABRICATION. COLOR TO BE SELECTED BY OWNER.
 2. ALL RAIL POSTS SHALL BE SET PERPENDICULAR TO TOP OF TRANSOM.
 3. ALL RAILS SHALL BE INSTALLED PARALLEL TO THE GRADE OF THE ROADWAY.
 4. THE TYPICAL SPLICE AND/OR EXPANSION JOINT SHALL BE LOCATED AT LEAST 2'-0" AWAY FROM CENTERLINE OF A RAIL POST.
 5. RAIL AND POSTS SHALL BE STRUCTURAL TUBING IN ACCORDANCE WITH ASTM A500 GRADE B, A618 OR A501.
 6. STEEL PLATES SHALL CONFORM TO ASTM A709 GRADE 50.
 7. ALL BOLTS SHALL BE ASTM F3125 GRADE A325 TYPE 1 GALVANIZED PER F3229 WITH HEX NUTS AND WASHERS AS SPECIFIED.
 8. END OF TUBE SECTIONS TO BE SAVED. ALL CUT ENDS SHALL BE TRUE AND SMOOTH AND CAPPED.
 9. ALL PICKETS SHALL HAVE A MINIMUM TENSILE STRENGTH OF 50 KSI.
 10. ALL CAP PLATES SHALL BE SHOP WELDED TO THE END OF TUBE WITH 3/4" FILET WELD ALL AROUND.



- NOTES:**
1. FOR GENERAL PLAN AND ELEVATION SEE SHEET 34.
 2. FOR GENERAL NOTES SEE SHEET 35.
 3. FOR GEOMETRIC LAYOUT SEE SHEET 36.
 4. FOR PILE PLANS SEE SHEET 37.
 5. FOR ABUTMENT A PLAN AND ELEVATION SEE SHEET 38.
 6. FOR ABUTMENT B PLAN AND ELEVATION SEE SHEET 39.
 7. FOR PIER 1 PLAN AND ELEVATION SEE SHEET 40.
 8. FOR PIER 2 PLAN AND ELEVATION SEE SHEET 41.
 9. FOR PIER 3 PLAN AND ELEVATION SEE SHEET 42.
 10. FOR STANDARD DETAILS SEE SHEET 44.
 11. DIMENSIONS AND ELEVATIONS SHOWN ON THIS SHEET ARE FOR BIDDING PURPOSES ONLY. THE CONTRACTOR SHALL COORDINATE WITH THE SUPERSTRUCTURE FABRICATOR TO LOCATE BEARINGS, SEAT ELEVATIONS AND SET OTHER NECESSARY DIMENSIONS AS PART OF THE REQUIRED CONTRACTORS SHOP DRAWINGS SUBMISSION.
 12. REINFORCING CHORDS NOT USED FOR END BAYS OF EACH SPAN, REINFORCING MAY NOT BE REQUIRED PER MANUFACTURER.
 13. BRIDGE RAILING AND FENCE TO BE DESIGNED AND DETAILED BY OTHERS, REFER TO SPECIAL PROVISION SECTION 430.
 14. DECK TO BE COATED WITH AN ANTI-SKID EPOXY COATING.



REVISIONS			
NO.	DESCRIPTION	BY	DATE

SEE OVERALL PROJECT COVER SHEET FOR SHA AND FAP CONTRACT NUMBERS

ANNE ARUNDEL COUNTY

DEPARTMENT OF PUBLIC WORKS

98262

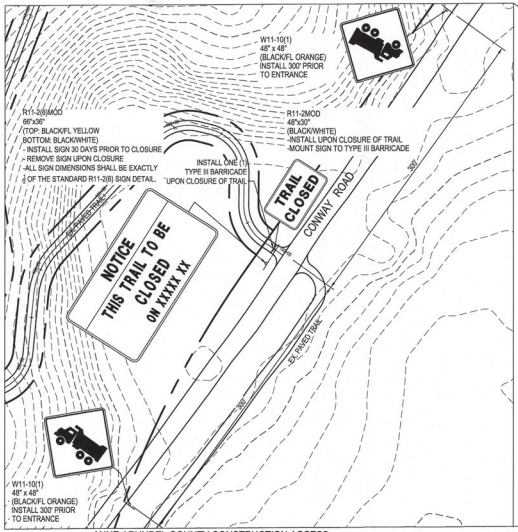
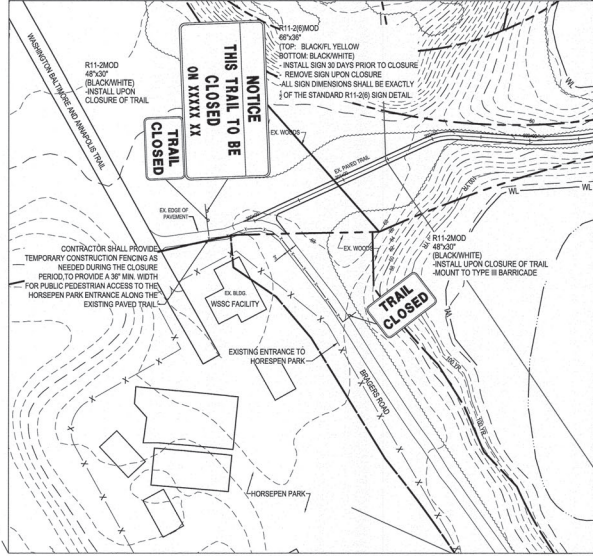
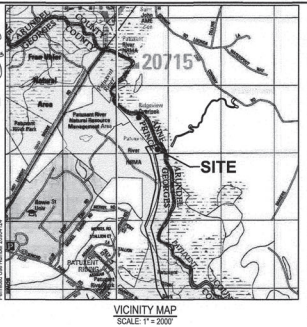
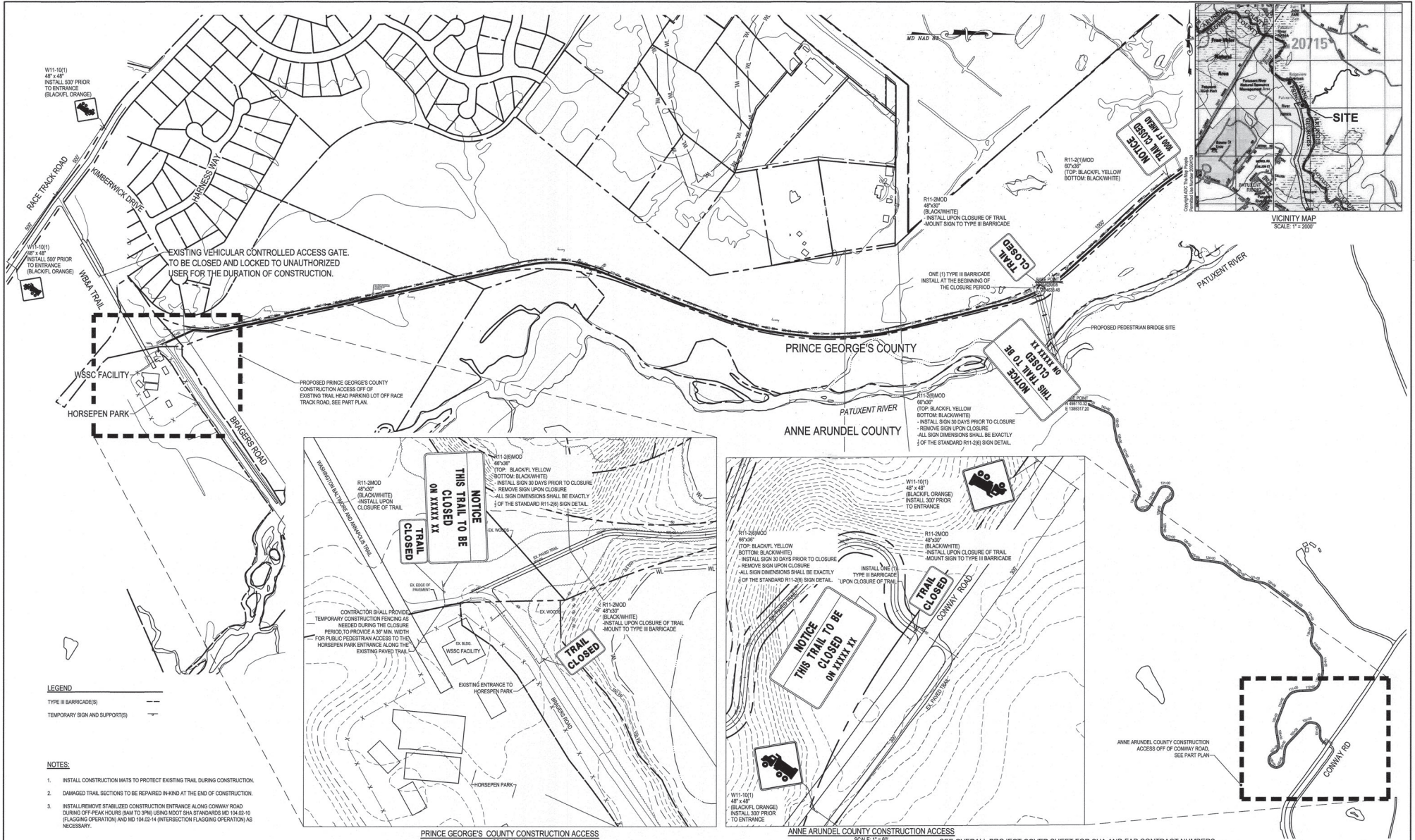
APPROVED: <i>[Signature]</i> 8/9/21 CHIEF ENGINEER	DATE: 8/9/21	APPROVED: <i>[Signature]</i> 8/11/21 PROJECT MANAGER	DATE: 8/11/21
APPROVED: <i>[Signature]</i> 8/11/21 ASSISTANT CHIEF ENGINEER	DATE: 8/11/21	APPROVED: <i>[Signature]</i> 8/11/21 CHIEF, RIGHT-OF-WAY	DATE: 8/11/21

SCALE: AS SHOWN
DRAWN BY: D.E.D.
CHECKED BY: J.M.R.
SHEET NO. 43 OF 45
PROJECT NO.: P390600
CONTRACT NO.: P390608

WB&A TRAIL - BRIDGE AT PATUXENT

TYPICAL SECTION

W:\Information Systems\Projects\2021\103123\Drawings\102-2849a\051617\98262-01.dwg, Jun 16, 2021, 4:07pm, Plot By: caduser

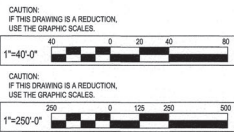


LEGEND

TYPE II BARRICADE(S) ———

TEMPORARY SIGN AND SUPPORT(S) - - -

- NOTES:**
- INSTALL CONSTRUCTION MATS TO PROTECT EXISTING TRAIL DURING CONSTRUCTION.
 - DAMAGED TRAIL SECTIONS TO BE REPAIRED IN KIND AT THE END OF CONSTRUCTION.
 - INSTALL REMOVE STABILIZED CONSTRUCTION ENTRANCES ALONG CONWAY ROAD DURING OFF-PEAK HOURS (8AM TO 3PM) USING MDOT SHA STANDARDS MD 104.02-10 (FLAGGING OPERATION) AND MD 104.02-14 (INTERSECTION FLAGGING OPERATION) AS NECESSARY.



WHITNEY BAILEY COX & MAGNANI, LLC
 300 East Joppa Road Suite 200 Baltimore, MD 21286
 MAIN 410.512.4500 FAX 410.324.4100
 www.wbcm.com

WBCM
 ARCHITECTURE ENGINEERING CONSTRUCTION

David E. Brown
 PROFESSIONAL ENGINEER
 No. 34885
 State of Maryland

NO.	DESCRIPTION	BY	DATE

ANNE ARUNDEL COUNTY
 DEPARTMENT OF PUBLIC WORKS

APPROVED: *Colleen* 8/9/21
 CHIEF ENGINEER

APPROVED: *David E. Brown* 8/11/21
 PROJECT MANAGER

APPROVED: *David E. Brown* 8/11/21
 ASSISTANT CHIEF ENGINEER

APPROVED: *David E. Brown* 8/11/21
 CHIEF, RIGHT-OF-WAY

DATE: 8/9/21

DATE: 8/11/21

DATE: 8/11/21

DATE: 8/11/21

SCALE: 1" = 250'

DRAWN BY: M.M.A.H

CHECKED BY: B.L.

SHEET NO. 45 OF 45

PROJECT NO.: 2014017000

CONTRACT NO.: 2014017000

98264

WB&A TRAIL - BRIDGE AT PATUXENT

TRAFFIC CONTROL PLAN