

FIFTH DECENNIAL
REDISTRICTING COMMISSION
PRELIMINARY REPORT

JULY 18, 2011

Members

Jana H. Carey, Chairman
Linda M. Schuett, Vice Chair
Joshua C. Greene
Dirk D. Haire
Jason E. Rheinsein

Introduction

Section 1203 of the Anne Arundel County Charter requires the Anne Arundel County Council to appoint a Charter Revision Commission (CRC) at or before its annual legislative session following the Decennial Census for the purposes of making a comprehensive study of County government and recommending changes to the Charter, including revision of the County Council districts.

Under Section 207 of the Charter, the County Council is empowered to change the County Council districts by ordinance passed by an affirmative vote of 5 members. A change in the number of councilmanic districts must be approved by the voters as a Charter Amendment.

Resolution Number 28-11 of the Anne Arundel County Council, passed on April 19, 2011, appointed the following individuals to serve as the Charter Revision Commission: Jana H. Carey, Linda M. Schuett, Joshua C. Greene, Dirk D. Haire and Jason E. Rheinstein. The Resolution directs the CRC to issue interim reports of its findings and preliminary conclusions at 60-day intervals. In arriving at their conclusions, the CRC will solicit the comments of the County Administration, the County Council members and the citizens of Anne Arundel County.

This interim report on redistricting represents the collective efforts of the CRC members, the expert mapping and demographic assistance of the Office of Planning and Zoning and comments from the public hearing held on June 27, 2011. The Commission has met seven times and received presentations from Anne Arundel County staff to provide historical background and legal standards for redistricting. In addition, Planning and Zoning staff implemented advanced redistricting software to incorporate the latest GIS information into map proposals.

Considerations in Redistricting

The averaging of countywide population to achieve an ideal district population number for each district is required under the Constitutional standard of "One-Person, One-Vote." The average or "ideal" population for each district should reflect a deviation of plus or minus 5% among the districts; however, a constitutional benchmark of a 10% deviation in population has been established at the federal and state levels. The Court of Appeals has held that the "substantially equal" standard required by the Maryland Constitution confers flexibility in redistricting to the constitutional standard of 10% but recognized the Constitutional Convention Committee originally contemplated deviations as high as 15%. Higher deviations, even as high as 16.4%, have been held constitutional in federal redistricting to preserve political boundaries. Redistricting also requires adherence to the principles of compactness and contiguity of voting districts and consideration of the political and geographic boundaries of the County. The courts have allowed attention to be paid to a desire to preserve communities of interest, so long as all the other Constitutional requirements were met.

Redistricting Anne Arundel County in 2011

The data for Anne Arundel County by the United States Census Bureau in the following chart provides the current population for the County as well as the percentage of deviation from the new “ideal” population number of 76,335 per Council District. The ideal population in 2000 was 69,951 persons per district. The population number is adjusted to exclude the non-resident inmate population under Chapter 67 of the Laws of the Maryland, 2010, also known as the “No Representation without Population Act.”

Census 2010 Population By District (Adjusted) *			
District	Population	Deviation	% Deviation
1	68987	-7348	-9.63%
2	76716	381	0.50%
3	74525	-1810	-2.37%
4	84679	8344	10.93%
5	75217	-1118	-1.46%
6	75857	-478	-0.63%
7	78366	2031	2.66%
Total Population			534,347
Ideal District Population			76,335

Source: United States Census Bureau

Table prepared by: Margaret Kaii Ziegler, Planning Administrator/Demographer
Anne Arundel County Office of Planning and Zoning

The above chart indicates the need to redistrict to achieve an ideal population in Districts 1 and 4, both which have experienced significant changes in the population over the last decade. Both districts exceed the 5% deviation from the population goal and District 4 is slightly above the constitutional threshold of 10%.

In analyzing potential changes to the County Council districts, the CRC has considered several alternatives from a simple adjustment between Districts 1 and 4 to more substantial redrawing of the County district lines. The Commission believes that, at a minimum, any plan must include a balancing to bring Districts 1 and 4 within the appropriate deviation for the ideal population. Further efforts to redraw County Council districts to address issues raised at the first Public Hearing, at which several speakers requested changes to create a rural District 7, which would require significant changes to all but a few districts in order to ensure that district populations stay within the proper deviation while adhering to political and municipal boundaries. Discussion of these topics is included in the Commission minutes under Appendix B.

Attached under Appendix A are maps generated by Planning and Zoning that the CRC has considered in their initial redistricting efforts. The maps are:

- 1) A map of Current Council districts.
- 2) Simple Adjustment – The map depicts movement of one boundary line between Districts 1 and 4 that achieves an acceptable deviation of the population numbers.
- 3) Simple Adjustment Refinement 1 – The Simple Adjustment Map with additional small adjustments is an attempt to achieve as close to ideal population as possible while keeping communities intact.
- 4) Existing District 7 without Crofton (Non-Balanced) – Planning and Zoning’s initial attempt to move Crofton out of District 7. District 7 would be significantly out of balance with the remaining 6 districts. The population numbers from this map would require additional balancing and adjustment for District 7 to meet the appropriate deviation.
- 5) Proposed Alternative 1 - A proposal provided by CRC member Haire that redraws district lines with a primary purpose of moving Crofton out of District 7 and adjusting District 7 lines to create a “rural” district. The map would require adjustment to preserve large communities such as Odenton Town Center and Seven Oaks as well as to preserve Small Area Plan areas to the extent possible.
- 6) Proposed Alternative 2 - Another proposal from CRC member Haire that the committee found unworkable due to multiple splits in recognized communities and communities of interest.
- 7) Proposed Alternative 3 – Another proposal from CRC member Haire that was also set aside because it split several communities, including areas that are engaged in redevelopment initiatives, and would have a significant effect on the racial balance of the districts.
- 8) Proposed Alternative 4 - A map created using suggestions from CRC member Rheinstein and adjustments added at a CRC meeting. This map moves all of greater Crofton from District 7 into the new District 4. There are significant adjustments to Districts 1 and 2 in that District 1 becomes an East-West oriented district with Route 100 as a boundary and District 2 becomes a North County district including the communities of Linthicum, Ferndale, Brooklyn Park and Glen Burnie. However, in order to balance the population in this map, the housing in Fort Meade was split and Seven Oaks subdivision was reunified. Districts 3, 5 and 6 remain largely intact.

9) Proposed Alternative 5 – A revision to the original Proposed Alternative 4 from CRC member Rheinstein to realign Districts 1 and 2 to their current configurations. In addition, an area from District 6 along the west side of Generals Highway was moved to District 7 to achieve a more balanced population. District 2 is reconfigured to a more North-Central orientation as it is today but adds some of District 4 to balance the population. District 1 is restored into a configuration closer to what exists today.

10) Computer Generated Balanced Population Only - This map was created by the software to illustrate how district lines are drawn strictly to achieve a balanced population with no consideration of communities of interest or geographic boundaries.

In addition to the maps, the Commission was presented with the population numbers as well as the racial breakdown of the proposed districts.

The first public hearing on redistricting was held on June 27, 2011. The Commission asked for general comments on redistricting. The individuals who testified expressed an interest in creating a more rural District 7 and, more specifically, the removal of Crofton from the district. Other individuals emphasized the need for districts to follow communities of interest and avoid political considerations.

The Commission will meet through July and August to formulate final recommendations for redistricting and solicit additional public comment at a hearing on July 25, 2011. A final report on redistricting will be presented to the County Council on September 6, 2011.

APPENDIX A

Maps

And

Population
Data

- 1) Map of Current Council Districts
- 2) Simple Adjustment
- 3) Simple Adjustment Refined
- 4) Existing District 7 without Crofton (Non-Balanced)
- 5) Proposed Alternative 1
- 6) Proposed Alternative 2
- 7) Proposed Alternative 3
- 8) Proposed Alternative 4
- 9) Proposed Alternative 5
- 10) Computer-Generated Balanced Population
- 11) Population Tables

Anne Arundel County

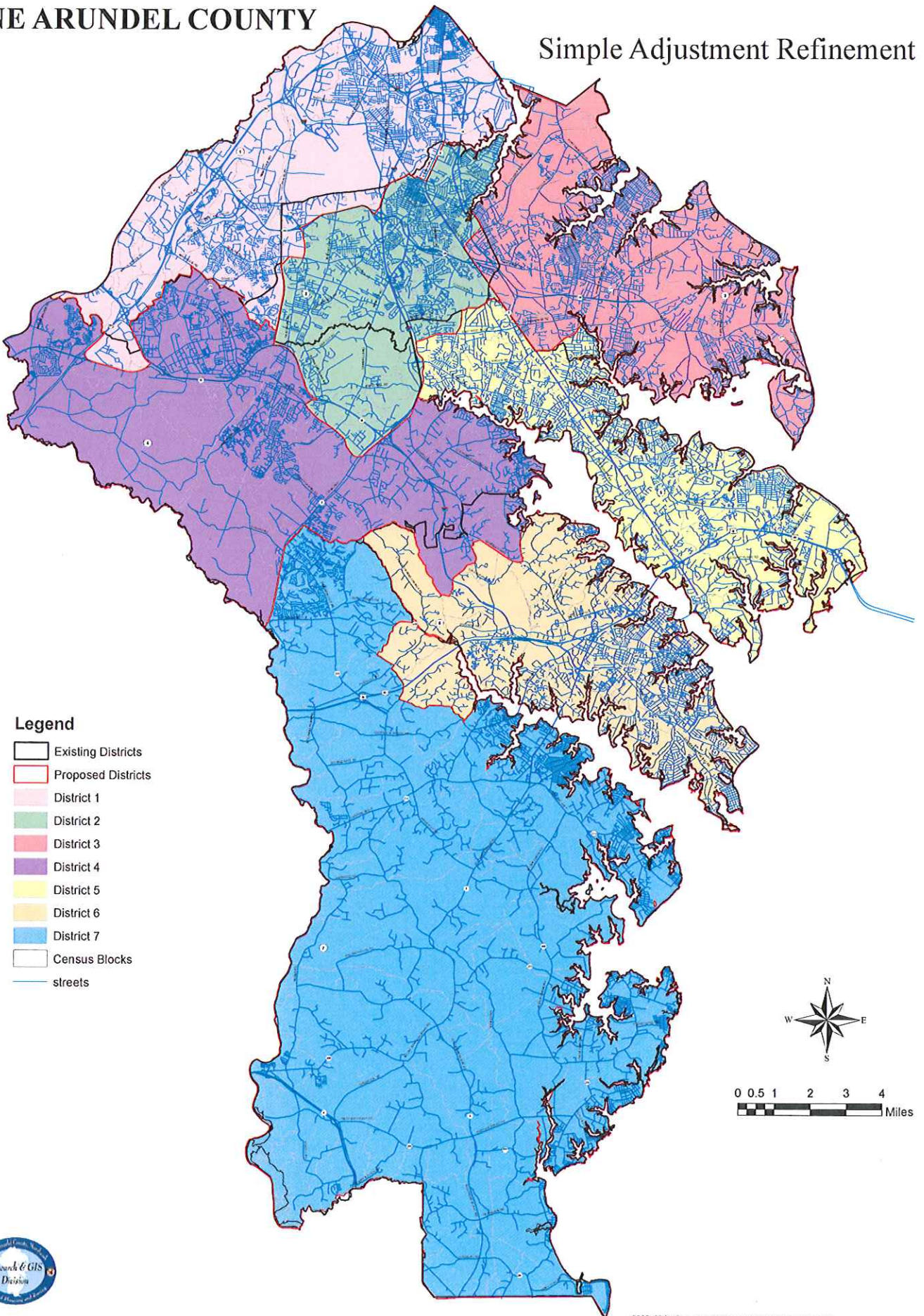
Council Districts



Map of Anne Arundel County Council Districts and Existing Population, 2010. Data provided by the Anne Arundel County Department of Planning and GIS. Map prepared by the Anne Arundel County Department of Planning and GIS. Date: 10/1/2010.

ANNE ARUNDEL COUNTY

Simple Adjustment Refinement 1



- Legend**
- Existing Districts
 - Proposed Districts
 - District 1
 - District 2
 - District 3
 - District 4
 - District 5
 - District 6
 - District 7
 - Census Blocks
 - streets



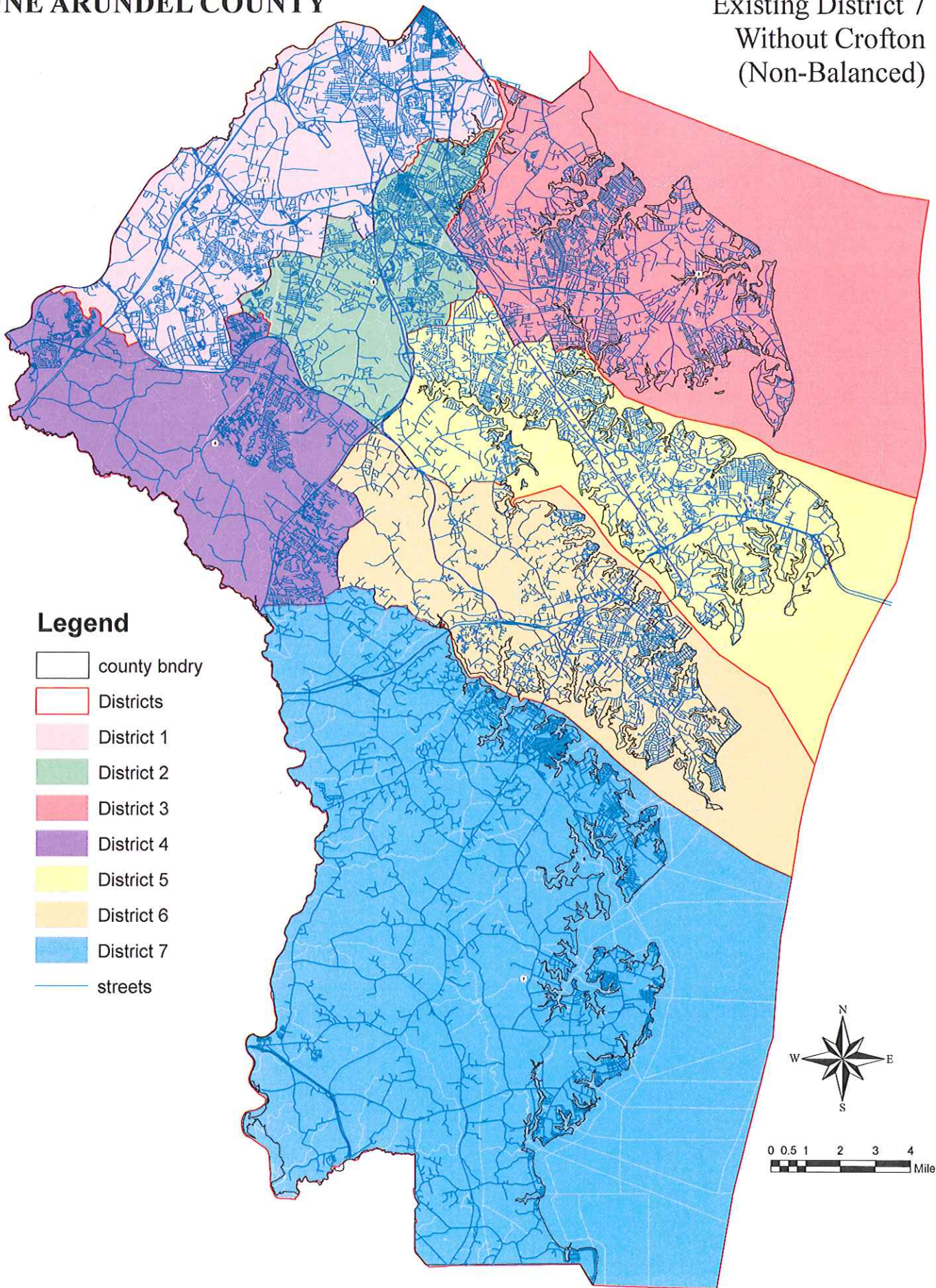
0 0.5 1 2 3 4 Miles



PRODUCTION: Research and GIS Division, Office of Planning and Zoning
C:\Program Files\ARC\Bridges\Districts\Alternatives\refined_adj\baserefinement1\refinement.mxd
DATA LAST MODIFIED: 05/12/2011

ANNE ARUNDEL COUNTY

Existing District 7
Without Crofton
(Non-Balanced)



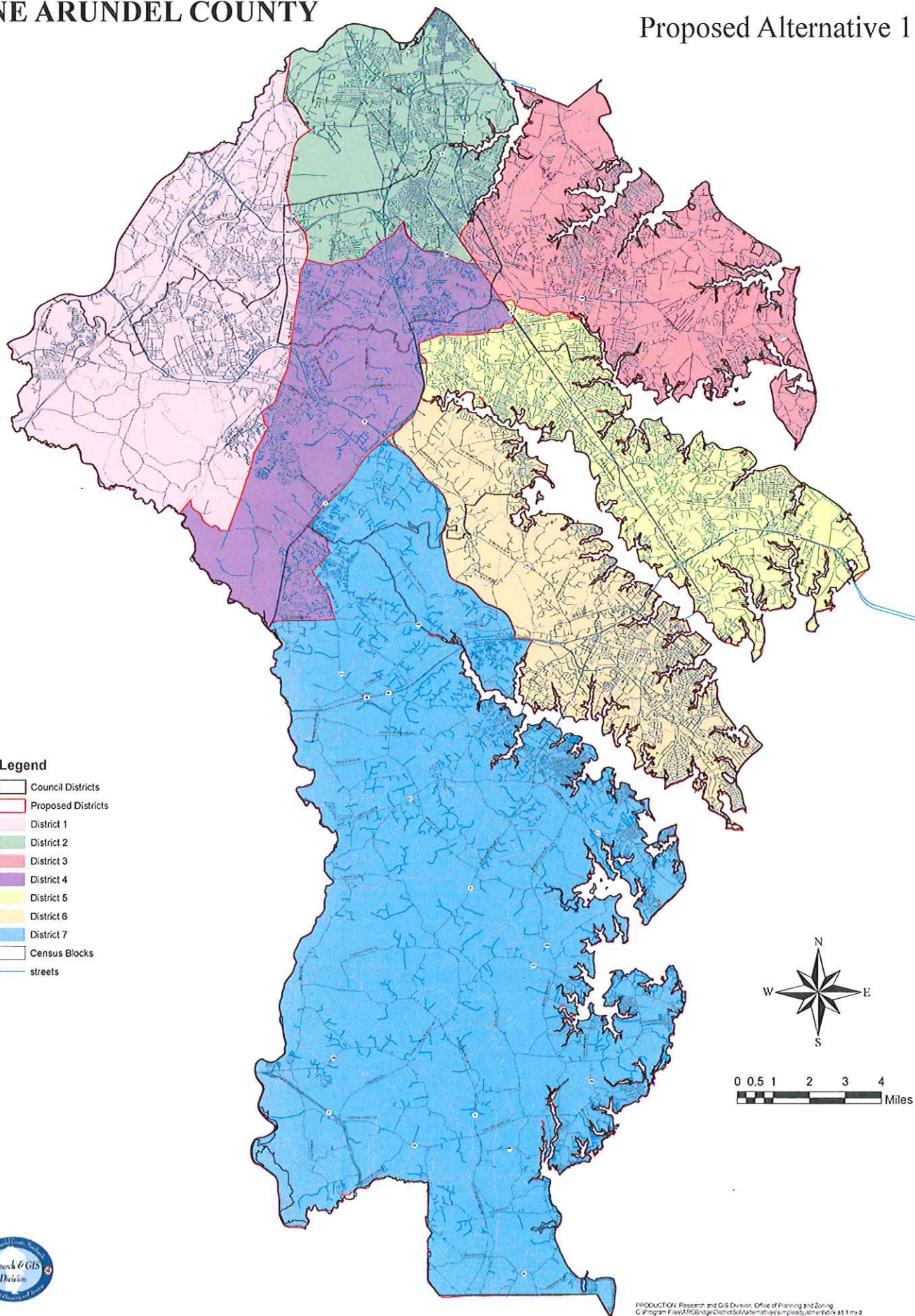
Legend

-  county bndry
-  Districts
-  District 1
-  District 2
-  District 3
-  District 4
-  District 5
-  District 6
-  District 7
-  streets



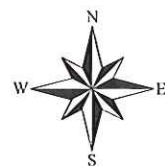
ANNE ARUNDEL COUNTY

Proposed Alternative 1



Legend

- Council Districts
- Proposed Districts
- District 1
- District 2
- District 3
- District 4
- District 5
- District 6
- District 7
- Census Blocks
- streets

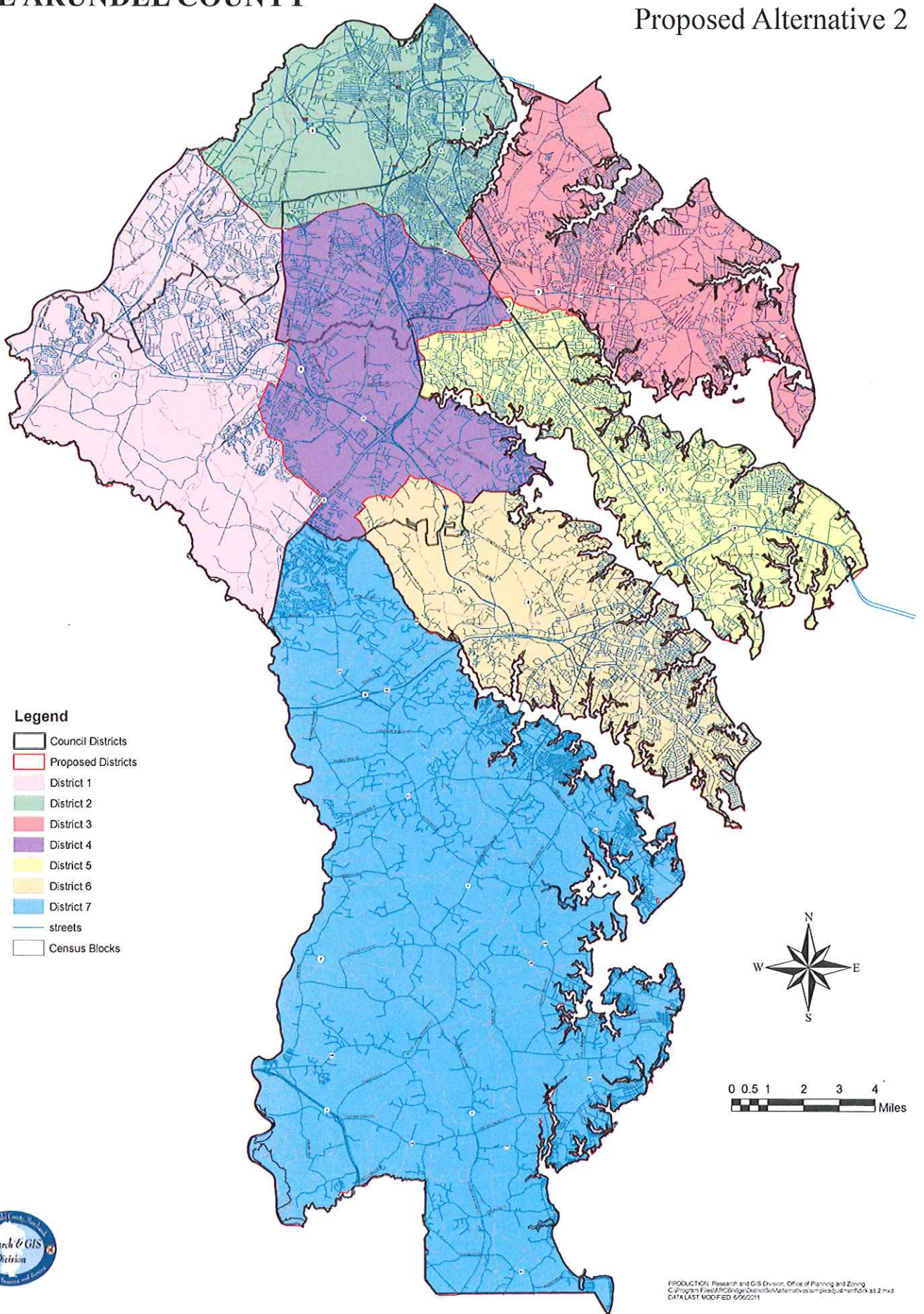


0 0.5 1 2 3 4 Miles



ANNE ARUNDEL COUNTY

Proposed Alternative 2



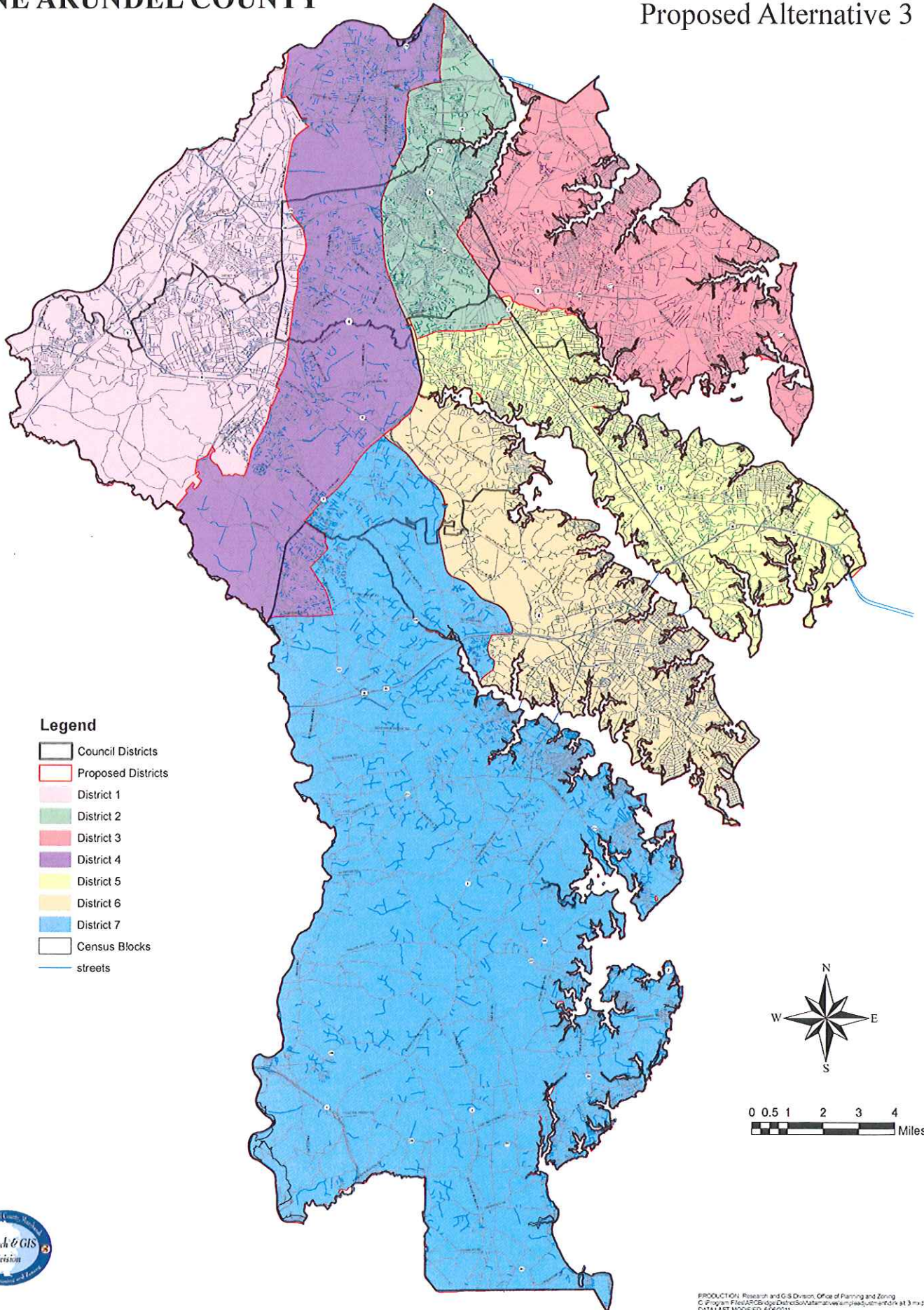
Legend

-  Council Districts
-  Proposed Districts
-  District 1
-  District 2
-  District 3
-  District 4
-  District 5
-  District 6
-  District 7
-  streets
-  Census Blocks



ANNE ARUNDEL COUNTY

Proposed Alternative 3



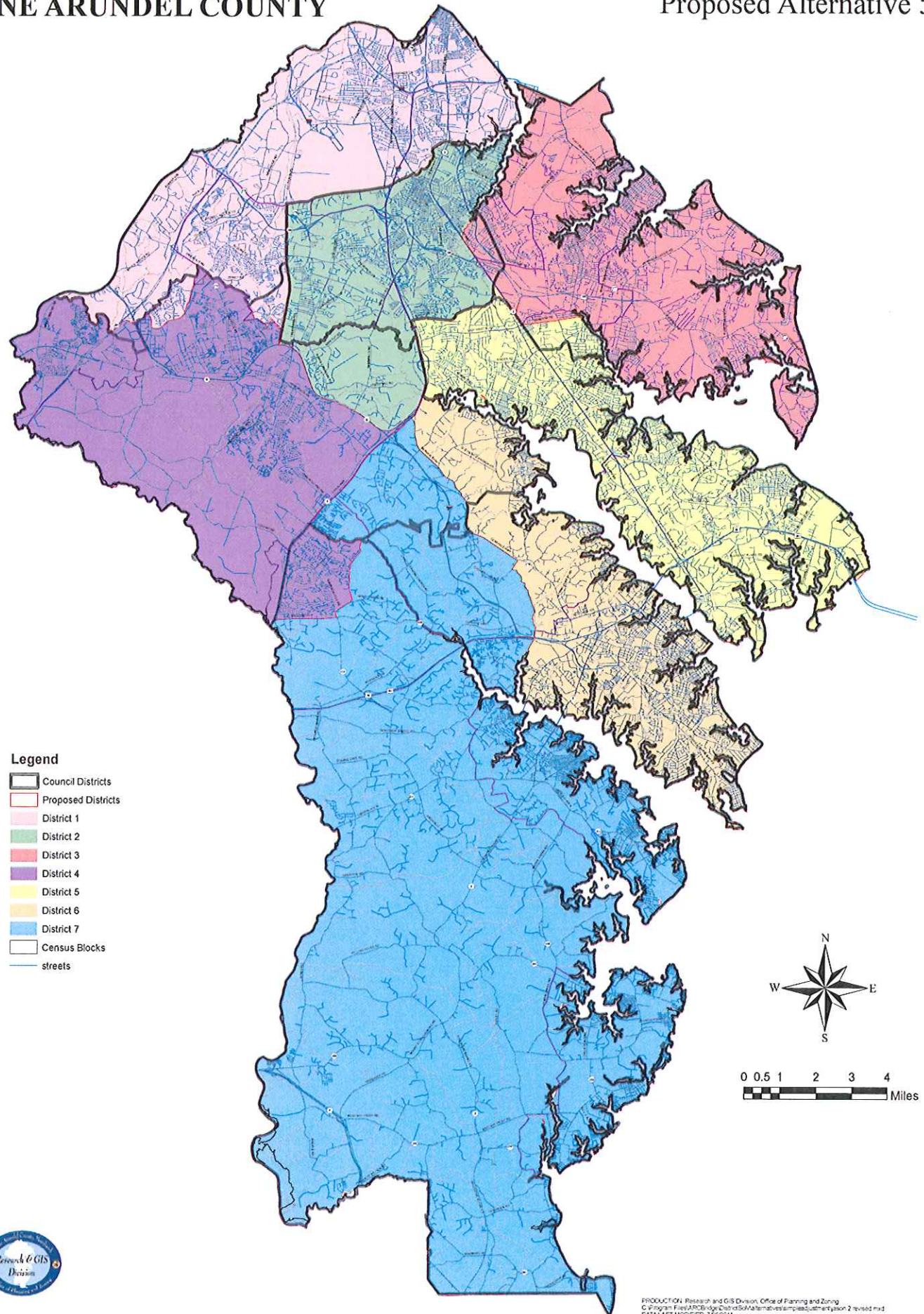
Legend

- Council Districts
- Proposed Districts
- District 1
- District 2
- District 3
- District 4
- District 5
- District 6
- District 7
- Census Blocks
- streets

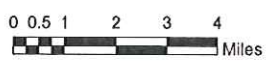


ANNE ARUNDEL COUNTY

Proposed Alternative 5



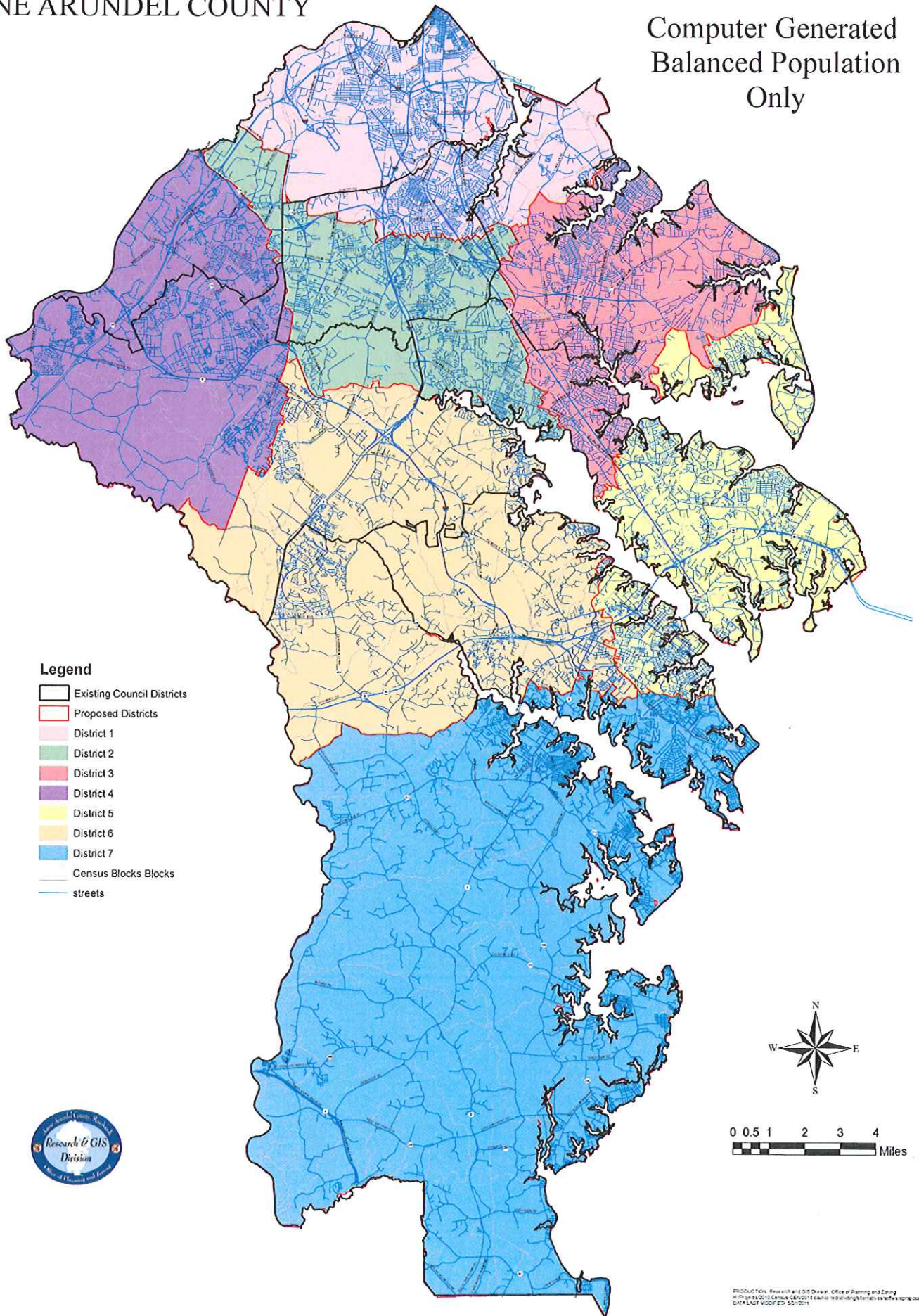
- Legend**
- Council Districts
 - Proposed Districts
 - District 1
 - District 2
 - District 3
 - District 4
 - District 5
 - District 6
 - District 7
 - Census Blocks
 - streets



PRODUCTION: Research and GIS Division, Office of Planning and Zoning
 C:\Program Files\AR\Bldg\pzd\SO\Alternatives\map\pzd\alt5\p5\alt5_2\rev1.mxd
 DATA LAST MODIFIED: 7/16/2011

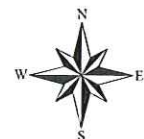
ANNE ARUNDEL COUNTY

Computer Generated Balanced Population Only



Legend

- Existing Council Districts
- Proposed Districts
- District 1
- District 2
- District 3
- District 4
- District 5
- District 6
- District 7
- Census Blocks
- streets



2010 Council Redistricting Plan

EXISTING

District	Population	Deviation	% Deviation
1	68987	-7348	-9.63%
2	76716	381	0.50%
3	74525	-1810	-2.37%
4	84679	8344	10.93%
5	75217	-1118	-1.46%
6	75857	-478	-0.63%
7	78366	2031	2.66%
Total Population			534,347
Ideal District Population			76,335

Racial Breakdown							
White	Black	American Indian & Alaska Native	Asian	Native Hawaiian & Other Pacific Islander	Other	Two or More Races	Total
45,334	15,302	250	3,944	56	1,653	2,448	68,987
52,431	15,257	279	3,360	139	2,443	2,807	76,716
65,128	5,346	233	1,386	58	822	1,552	74,525
50,762	23,019	289	4,562	131	2,347	3,569	84,679
67,160	3,814	151	1,911	33	618	1,530	75,217
55,457	12,679	205	1,703	36	3,892	1,885	75,857
68,540	5,434	255	1,479	31	845	1,782	78,366
404,812	80,851	1,662	18,345	484	12,620	15,573	534,347

SIMPLE ADJUSTMENT

District	Population	Deviation	% Deviation
1	74,558	-1,777	-2.33%
2	76,742	407	0.53%
3	74,515	-1,820	-2.38%
4	79,050	2,715	3.56%
5	75,215	-1,120	-1.47%
6	75,901	-434	-0.57%
7	78,366	2,031	2.66%
Total Population			534,347
Ideal District Population			76,335

Racial Breakdown							
White	Black	American Indian & Alaska Native	Asian	Native Hawaiian & Other Pacific Islander	Other	Two or More Races	Total
46,179	19,315	268	4,188	70	1,832	2,706	74,558
52,448	15,264	279	3,360	140	2,443	2,808	76,742
65,119	5,345	233	1,386	58	822	1,552	74,515
49,867	19,000	271	4,318	116	2,168	3,310	79,050
67,158	3,814	151	1,911	33	618	1,530	75,215
55,501	12,679	205	1,703	36	3,892	1,885	75,901
68,540	5,434	255	1,479	31	845	1,782	78,366
404,812	80,851	1,662	18,345	484	12,620	15,573	534,347

2010 Council Redistricting Plan

SIMPLE ADJUSTMENT REFINEMENT 1

District	Population	Deviation	% Deviation
1	76,324	-11	-0.02%
2	76,301	-34	-0.05%
3	76,627	292	0.38%
4	76,333	-2	0.00%
5	75,763	-572	-0.75%
6	76,409	74	0.10%
7	76,590	255	0.33%
Total Population			534,347
Ideal District Population			76,335

Racial Breakdown						
White	Black	American Indian & Alaska Native	Asian	Native Hawaiian & Other Pacific Islander	Other	Two or More Races
47,481	19,590	271	4,251	70	1,898	2,763
53,619	14,277	283	3,270	134	1,992	2,726
65,307	6,463	238	1,613	65	1,233	1,708
47,635	18,719	258	4,221	116	2,172	3,212
67,796	3,822	157	1,821	32	624	1,511
56,087	12,573	208	1,715	36	3,860	1,930
66,887	5,407	247	1,454	31	841	1,723
404,812	80,851	1,662	18,345	484	12,620	15,573
						534,347

PROPOSED ALTERNATIVE 1

District	Population	Deviation	% Deviation
1	75,050	-1,285	-0.017
2	76,064	-271	-0.004
3	74,904	-1,431	-0.019
4	76,086	-249	-0.003
5	76,841	506	0.007
6	77,178	843	0.011
7	78,224	1,889	0.025
Total Population			534,347
Ideal District Population			76,335

Racial Breakdown						
White	Black	American Indian & Alaska Native	Asian	Native Hawaiian & Other Pacific Islander	Other	Two or More Races
36,259	27,218	267	5,286	103	2,257	3,660
57,583	11,186	314	2,491	67	2,113	2,310
63,839	6,237	234	1,606	66	1,231	1,691
54,216	13,588	235	3,801	129	1,474	2,643
68,658	4,043	153	1,846	32	606	1,503
56,717	12,680	203	1,714	46	3,866	1,952
67,540	5,899	256	1,601	41	1,073	1,814
404,812	80,851	1,662	18,345	484	12,620	15,573
						534,347

2010 Council Redistricting Plan

PROPOSED ALTERNATIVE 2

District	Population	Deviation	% Deviation
1	77,171	836	0.011
2	74,096	-2,239	-0.029
3	74,904	-1,431	-0.019
4	76,205	-130	-0.002
5	76,841	506	0.007
6	76,764	429	0.006
7	78,366	2,031	0.027
Total Population			534,347
Ideal District Population			76,335

Racial Breakdown							Total
White	Black	American Indian & Alaska Native	Asian	Native Hawaiian & Other Pacific Islander	Other	Two or More Races	
38,418	27,072	277	5,410	107	2,243	3,644	
56,234	10,711	301	2,492	63	2,070	2,225	
63,839	6,237	234	1,606	66	1,231	1,691	
52,877	14,614	234	3,782	149	1,721	2,828	
68,658	4,043	153	1,846	32	606	1,503	
56,246	12,740	208	1,730	36	3,904	1,900	
68,540	5,434	255	1,479	31	845	1,782	
404,812	80,851	1,662	18,345	484	12,620	15,573	
						534,347	

PROPOSED ALTERNATIVE 3

District	Population	Deviation	% Deviation
1	75,297	-1,038	-0.014
2	75,706	-629	-0.008
3	74,904	-1,431	-0.019
4	76,197	-138	-0.002
5	76,841	506	0.007
6	78,904	2,569	0.034
7	76,498	163	0.002
Total Population			534,347
Ideal District Population			76,335

White	Black	American Indian & Alaska Native	Asian	Native Hawaiian & Other Pacific Islander	Other	Two or More Races	Total
36,428	27,254	268	5,308	103	2,263	3,673	75,297
51,579	15,375	320	2,949	114	2,619	2,750	75,706
63,839	6,237	234	1,606	66	1,231	1,691	74,904
60,051	9,363	228	3,321	82	962	2,190	76,197
68,658	4,043	153	1,846	32	606	1,503	76,841
58,350	12,736	203	1,730	46	3,876	1,963	78,904
65,907	5,843	256	1,585	41	1,063	1,803	76,498
404,812	80,851	1,662	18,345	484	12,620	15,573	534,347

2010 Council Redistricting Plan

PROPOSED ALTERNATIVE 4

District	Population	Deviation	% Deviation
1	76,754	419	0.55%
2	76,064	-271	-0.36%
3	75,706	-629	-0.82%
4	78,055	1,720	2.25%
5	78,744	2,409	3.16%
6	75,864	-471	-0.62%
7	73,160	-3,175	-4.16%
Total Population			534,347
Ideal District Population			76,335

White	Black	American Indian & Alaska Native	Asian	Native Hawaiian & Other Pacific Islander	Other	Two or More Races	Total
42,969	23,244	261	4,955	148	1,843	3,334	76,754
57,583	11,186	314	2,491	67	2,113	2,310	76,064
64,494	6,366	236	1,612	66	1,234	1,698	75,706
50,198	18,239	243	4,254	89	1,913	3,119	78,055
70,374	4,024	161	1,946	34	640	1,565	78,744
55,653	12,515	199	1,673	41	3,851	1,932	75,864
63,541	5,277	248	1,414	39	1,026	1,615	73,160
404,812	80,851	1,662	18,345	484	12,620	15,573	534,347

PROPOSED ALTERNATIVE 5

District	Population	Deviation	% Deviation
1	77,498	1,163	1.52%
2	75,320	-1,015	-1.33%
3	75,706	-629	-0.82%
4	78,055	1,720	2.25%
5	78,744	2,409	3.16%
6	75,864	-471	-0.62%
7	73,160	-3,175	-4.16%
Total Population			534,347
Ideal District Population			76,335

White	Black	American Indian & Alaska Native	Asian	Native Hawaiian & Other Pacific Islander	Other	Two or More Races	Total
47,955	20,087	292	4,229	84	1,918	2,933	77,498
52,597	14,343	283	3,217	131	2,038	2,711	75,320
64,494	6,366	236	1,612	66	1,234	1,698	75,706
50,198	18,239	243	4,254	89	1,913	3,119	78,055
70,374	4,024	161	1,946	34	640	1,565	78,744
55,653	12,515	199	1,673	41	3,851	1,932	75,864
63,541	5,277	248	1,414	39	1,026	1,615	73,160
404,812	80,851	1,662	18,345	484	12,620	15,573	534,347

2010 Council Redistricting Plan

EXISTING DISTRICT 7 WITHOUT CROFTON - NON-BALANCED

District	Population	Deviation	% Deviation	White	Black	American Indian & Alaska Native	Asian	Native Hawaiian & Other Pacific Islander	Other	Two or More Races	Total
1	80,147	3,812	4.99%	52,327	17,992	313	4,309	90	1,974	3,142	80,147
2	79,826	3,491	4.57%	53,103	17,785	292	3,406	144	2,180	2,916	79,826
3	79,590	3,255	4.26%	68,009	6,591	251	1,661	67	1,256	1,755	79,590
4	79,492	3,157	4.14%	51,483	18,027	224	4,655	87	1,974	3,042	79,492
5	79,410	3,075	4.03%	71,118	3,981	154	1,859	43	642	1,613	79,410
6	78,349	2,014	2.64%	57,737	12,788	210	1,759	36	3,895	1,924	78,349
7	57,533	-18,802	-24.63%	51,035	3,687	218	696	17	699	1,181	57,533
Total Population				404,812	80,851	1,662	18,345	484	12,620	15,573	534,347
Ideal District Population											76,335

APPENDIX B

Commission Minutes

ANNE ARUNDEL COUNTY CHARTER REVISION COMMISSION
Minutes - Meeting #1
April 28, 2011 - 9:00 A.M.
Room 161, Arundel Center, Annapolis, MD

The meeting convened at 9:10 A.M. with all members present:

Jana Carey
Linda Schuett
Joshua Greene
Dirk Haire
Jason Rheinstein (arrived at 9:20 A.M.)

Also present were:

Judy C. Holmes, Administrative Officer
JoAnne Gray, Assistant Administrative Officer
Beth Jones, Future Administrative Officer
Amy Tate, Legislative Counsel
Lee Longo, Reporter to the Commission
Margaret Kaii-Ziegler, Demographer, Office of Planning and Zoning
Carole Sanner, Office of Planning and Zoning
David Plymyer, Deputy County Attorney

Dick Ladd, Chairman of the County Council thanked the members of the Charter Revision Commission for volunteering their time to serve on the Commission.

Introduction of Members and Staff

Judy C. Holmes asked the staff, members, and others in attendance to introduce themselves. Ms. Holmes briefly described the process. She stated that redistricting, the redrawing of Councilmanic boundaries, is the first order of business, with an interim report to the County Council due in 60 days and a final report in 120 days. Following redistricting, the Commission will begin review of the Charter and make recommendations for changes.

Briefing by Counsel

David A. Plymyer, Deputy County Attorney, briefed the Commission on redistricting guidelines and cited relevant case law. Mr. Plymyer reminded the members that meetings of the Commission are subject to the State Open Meetings Act and are recorded. The Commission has one year from the time of appointment, to complete its work.

Mr. Plymyer emphasized that the Commission acts in an advisory capacity only; the final decision on redistricting will be made by the County Council acting on the recommendations of the Commission in the form of an ordinance. Such an ordinance requires a vote of five members and is not subject to executive veto. However, it is subject to referendum by petition.

In regard to Charter amendments, Mr. Plymyer stated that the recommendations of the Commission are acted on by the County Council in the form of a resolution, which also requires five votes for passage and is not subject to veto.

Mr. Plymyer referred to three pieces of reading material that the Commission might want to read which refer to the Charter. Ms. Tate will furnish these reports to the members of the Commission.

Mr. Plymyer handed out and went over Frequently Asked Questions.

Mr. Rheinstein requested a copy of the report from the 1991 Commission. Ms. Holmes said she would provide that report.

Briefing by Demographer

Margaret Kaii-Ziegler, Office of Planning and Zoning, stated that she met with the Election Board and they have to come up with new precincts and decide where they will hold polling places. They are waiting for the State to do legislation which won't start until the fall and will be finalized sometime in the winter. Ms. Ziegler wasn't sure whether this information tied in with what the Commission would be doing.

Mr. Plymyer explained to Ms. Ziegler that those are State precinct lines and the Commission's concern is with Councilmanic Districts.

Ms. Ziegler briefly discussed the population changes in the County since the last census. She stated that redistricting includes population, race and ethnicity. She said that the problem with the American Community Survey data is that there is a high margin of error. The socio-economic information from ACS is based on the 2000 census and that census was off by 20,000 people in Anne Arundel County, therefore, there would be a discrepancy.

Mr. Greene wanted to clarify that the Commission would be looking at the lines of the Councilmanic Districts; there may be a recommendation that is status quo, or the need to add two more districts in ten years.

In response to Mr. Greene's question as to the ideal number of citizens per Councilmanic district, a discussion ensued among the members and staff regarding increasing the number of districts and the timing and sequencing that would be necessary to effect this change.

Ms. Carey said it would be helpful if there were guidelines and definitions of those guidelines for redistricting.

Ms. Schuett said that there is a "Citizen's Guide to Redistricting" available online that gives an overall view of redistricting.

There was further discussion among the members and staff regarding the census numbers and boundaries of the Councilmanic Districts.

Vote for Chairman and Vice Chairman

After each member gave a brief synopsis of their background, Ms. Holmes asked them to vote on a Chairman and a Vice Chairman.

Mr. Greene made a motion to appoint Ms. Carey as the Chairman of the Commission. The members voted unanimously by a show of hands and Ms. Carey was elected chairman.

Mr. Haire made a motion to appoint Ms. Schuett as Vice-Chairman. The members voted unanimously by a show of hands and Ms. Schuett was elected chairman.

Meeting Schedule

The members decided that future meetings would be scheduled for each Friday beginning at 9:00 A.M. in the Chambers of the Arundel Center. The next meeting will be on Friday, May 6, at 9:00 A.M.

Adjournment

There being no further business, the meeting was adjourned at approximately 10:37 A.M.

Respectfully submitted,

Lee L. Longo
Reporter

ANNE ARUNDEL COUNTY CHARTER REVISION COMMISSION
Minutes - Meeting #2
May 6, 2011 - 9:00 A.M.
Council Chambers, Arundel Center, Annapolis, MD

The meeting convened at 9:10 A.M. with the following members present:

Jana Carey
Linda Schuett
Joshua Greene
Dirk Haire

Mr. Rheinstein was absent.

Also present were:

Judy C. Holmes, Administrative Officer
JoAnne Gray, Assistant Administrative Officer
Beth Jones, Future Administrative Officer
Amy Tate, Legislative Counsel
Lee Longo, Reporter to the Commission
Margaret Kaii-Ziegler, Demographer, Office of Planning and Zoning
Carole Sanner, Office of Planning and Zoning

Ethics Law

Amy Tate, Legislative Counsel, stated that the Commission is subject to the Open Meetings Act and correspondence is public. She said Mr. Plymyer from the Office of Law sent a suggestion to the Commission to retain electronic messages by either printing them out or in an electronic file.

Ms. Schuett asked Ms. Tate if everything could be copied to her and she could keep the file. Ms. Tate answered affirmatively.

Ms. Tate handed out a pocket-size version of The Ethics Code. She stated that while the Commission is not subject to a financial disclosure, it is subject to The Ethics Law of Anne Arundel County.

Guidelines for Redistricting

Ms. Tate provided information to the members of the Commission regarding Guidelines for Redistricting and went over equality of population, The Voting Rights Act, and other items pertaining to redistricting.

Ms. Schuett asked if there were maps that showed racial classification.

Margaret Kaii-Ziegler, Research & GIS Division, Office of Planning and Zoning, stated that the Census information that will come from the State will be broken down by census blocks which will show racial classification.

Ms. Carey referred to the 1991 Redistricting Report and the 2001 Redistricting Report. She said that District 7 exceeded the population average per district by almost 13% and District 2 was under the average about 8% and District 6 was under the average by 6.7%. She stated that none of those districts were adjacent to each other so they had to do a lot of moving around in terms of redistricting. Ms. Carey said that they also tested and rejected a nine district plan due to the peninsula nature of Anne Arundel would result in a split of too many communities.

Ms. Carey said that by looking at the information received so far for this year, it looks as though there are two districts that deviate by more than 5%. District 1 is under by 9.63% and District 4 is above average by 10.93%. These two districts are adjacent to each other.

Map Presentation

Ms. Ziegler stated that the data that is provided to Planning and Zoning is from the Census Bureau at the block level but because of the legislation from the State of Maryland for those that are incarcerated the numbers must be adjusted. The Maryland Department of Planning is revising those numbers to provide to Planning and Zoning data at the block level. She expects to have that information shortly.

Ms. Ziegler said that the information she has used thus far was aggregated from precinct level from Maryland Department of Planning.

Ms. Schuett asked Ms. Ziegler what she meant by precinct level.

Ms. Ziegler said that the only information provided at this point is the revised census information from 2010; populations by precinct. It was not available at the block level at that time. She said that precincts nest within council districts.

Ms. Ziegler stated that the County Council Office has purchased DISTRICTSolve software and ArcView tools. She said that the software takes the information at the block level and aggregates the information. It will make a recommendation as to how to modify boundaries, allow changes to be made, print out a report showing population and the racial make-up as things get moved around.

There was further discussion among the members and staff regarding the census numbers and boundaries of the Councilmanic Districts. Emphasis should be on current population numbers and due regard to natural boundaries and communities of interest.

Ms. Ziegler is to provide proposals for the Commission to review at the next meeting.

Future Meetings

The following are dates established as part of the Charter Review Commission schedule:

May 16, 2011 – 9:00 A.M. – CRC Meeting
June 8, 2011 – 9:00 A.M. – CRC Meeting
June 27, 2011 – 7:00 P.M. – Public Hearing 1

July 18, 2011 – 7:00 P.M. – Interim Report presented to County Council
July 25, 2011 – 7:00 P.M. – Public Hearing 2
September 6, 2011 – 7:00 P.M. – Final Redistricting Report to County Council

Adjournment

There being no further business, the meeting was adjourned at approximately 10:38 A.M.

Respectfully submitted,

Lee L. Longo
Reporter

ANNE ARUNDEL COUNTY CHARTER REVISION COMMISSION
Minutes - Meeting #3
May 16, 2011 - 9:00 A.M.
Council Chambers, Arundel Center, Annapolis, MD

The meeting convened at 9:00 A.M. with the following members present:

Jana Carey
Linda Schuett
Joshua Greene
Dirk Haire
Jason Rheinstein (arrived at 9:23 a.m.)

Also present were:

Judy C. Holmes, Administrative Officer
JoAnne Gray, Assistant Administrative Officer
Amy Tate, Legislative Counsel
Lee Longo, Reporter to the Commission
Margaret Kaii-Ziegler, Demographer, Office of Planning and Zoning
Carole Sanner, Office of Planning and Zoning

Approval of Minutes

On motion of Ms. Schuett, seconded by Mr. Haire, the minutes of April 28, 2011, and May 6, 2011 were approved as presented.

Future Meetings

Following discussion regarding future meetings and public hearings, it was decided that the Commission would hold meetings on June 1, June 8, Friday, June 17, and Friday, June 24. The first public hearing will be held on June 27 and the presentation of the CRC Redistricting Interim Report to the County Council on July 18. The second public hearing on redistricting will be held on July 25 and presentation of the final redistricting report to the County Council will be on September 6. Meetings will be held in the Council Chambers, if available, and if a member of the Commission is unable to attend a meeting and requests to listen in by speakerphone, then a conference room will be used.

Mapping Software/Redistricting Presentation

Margaret Kaii-Ziegler, Demographer, Office of Planning and Zoning, stated that she created the Google website for the Commission to look at some alternatives regarding redistricting. She gave a brief explanation as to how to access the website and what it will show, but due to some technical difficulties, she had to revert to using the DISTRICTSolve software to show the scenarios she created.

The first alternative was slightly modifying the boundary between District 4 and District 1 to balance the population. The second showed moving Crofton from District 7 to District 4 and re-balancing District 1 through 6. This alternative showed that District 7 remained out of balance.

After considering several proposals regarding Districts 1 and 4, it was decided by the Commission that the alternative that Ms. Ziegler originally proposed regarding the boundary between Districts 1 and 4 was more of the ideal solution. The Commission also discussed that if, at the public hearing, there are strong sentiments or arguments in favor of doing something with a particular area then the Commission could consider those suggestions at that point.

There was further discussion between the Commission and Planning and Zoning regarding other districts. Mr. Rheinstein said that he would prefer more time to look at the different alternatives more closely by going on the Google website.

Mr. Greene stated that as part of the next meeting, it would be beneficial to have the current alternatives that were proposed at this meeting, as well as a map using the software showing the ideal number of what the districts would look like without taking the neighborhoods into consideration. He said that part of the public's perception is going to be is how the Commission arrived at the final decisions and the public needs to see what the County would look like if neighborhoods and communities were not taken into consideration.

Mr. Haire said that it would be helpful if there were large colorful maps showing the existing Council lines, and the map showing some of District 4 being put into District 1 which would show the roads, natural boundaries, and streets.

Ms. Carey summarized by saying that there is a proposal before the Commission that gets the numbers of each district within the standard deviation, does not break-up any census block, and does not split any communities. Ms. Carey suggested that the members look at the Google program to see if there is any overriding reason to deviate from what Ms. Ziegler has proposed, and as that is being done take into consideration what it would do to the census blocks, communities, and how it would affect the dividing lines such as roads and streets.

Ms. Schuett said she would like to see Ms. Ziegler's best effort in creating the perfect map by taking into account all of those considerations.

Ms. Sanner recommended that when taking communities into consideration, such as Seven Oaks, Russet, and Piney Orchard, Commission members should remember that those are communities with strong associations and affiliations and should not be split.

The Commission asked Ms. Ziegler to provide large colorful maps that would show the original proposal between Districts 1 and 4; one with each district if the population was equalized without taking any issue into consideration; and one that would show each district adjusted by taking all issues that have been discussed into consideration.

Ms. Ziegler said that she would e-mail PDF files to the Commission, and make them available on the Google site, as well as providing hard copies.

Future Meetings

Ms. Carey said that the next two meetings would be on June 1 and June 8. She reminded the members to hold open Friday mornings at 9:00 a.m. going forward.

Ms. Schuett raised some questions regarding the public hearings.

Ms. Carey asked Ms. Holmes who would be drafting the Interim Report. Ms. Holmes replied that Ms. Tate had volunteered to do the Report.

Ms. Tate stated that she planned to model the report after the previous report.

Ms. Schuett asked Ms. Tate if information would be provided at the public hearing so everyone could see what the Commission has been doing and which direction they are headed.

Ms. Tate responded affirmatively.

Ms. Schuett suggested that copies of maps and a draft Interim Report be made available to the public at the hearing.

Ms. Carey asked the members what their thoughts were concerning the public hearing.

Mr. Greene stated that he believes any map that is being produced by Planning and Zoning for the Commission's consideration should be made available to the public either on the website or by hard copies at the public hearings.

Ms. Tate said that there is a website that shows the Charter Revision Commission's meeting schedule and that links could be provided for further information to the public.

The Commission was in agreement with Mr. Greene's statements regarding the public hearings.

There was some further discussion between the Commission and Ms. Sanner concerning the public hearings.

Adjournment

On motion of Ms. Schuett, seconded by Mr. Greene, the meeting was adjourned at approximately 10:54A.M.

Respectfully submitted,

Lee L. Longo
Reporter

ANNE ARUNDEL COUNTY CHARTER REVISION COMMISSION
Minutes - Meeting #4
June 1, 2011 - 9:00 A.M.
Council Chambers, Arundel Center, Annapolis, MD

The meeting convened at 9:00 A.M. with the following members present:

Jana Carey
Linda Schuett
Joshua Greene
Dirk Haire
Jason Rheinstein (arrived at 9:13 a.m.)

Also present were:

JoAnne Gray, Assistant Administrative Officer
Beth Jones, Future Administrative Officer
Amy Tate, Legislative Counsel
Lee Longo, Reporter to the Commission
Margaret Kaii-Ziegler, Demographer, Office of Planning and Zoning
Carole Sanner, Office of Planning and Zoning

Approval of Minutes

The minutes of May 16, 2011 were approved as presented.

Discussion of Maps Prepared by Ms. Ziegler

Ms. Carey stated that Ms. Ziegler prepared four maps; one showing current Council Districts; one showing a simple adjustment between Districts 4 and 1 that would bring the population disparity into compliance with that allowed in the Districts; a simple adjustment with a further refinement; and one for informational purposes only, a map that shows what the Districts would look like if there was an equal population.

Margaret Kaii-Ziegler, Demographer, Office of Planning and Zoning, stated that with the Simple Adjustment Refinement 1 Map, she tried to refine the polygons for the Districts so that the population was as close to being balanced as possible without affecting neighborhoods or communities. Ms. Ziegler said that when balancing the population some of the things that must be kept in mind are compactness, continuity, following natural boundaries, and balance of the population. She said that the compactness on this map is not as good as on the Simple Adjustment Map. When you try to balance the population as much as possible, the polygons are not as compact.

Ms. Carey asked Ms. Ziegler if the refinement map affects more borders than the simple adjustment map. Ms. Carey said that as she looked at the map, it appeared that the borders that were affected were Districts 1 and 2; 1 and 4; 4 and 6; 3 and 2; 5 and 3; 5 and 2; and 2 and 4. She asked Ms. Ziegler if this was correct.

Ms. Ziegler answered affirmatively.

Mr. Greene referred to the map and asked what the two areas were that were coming from District 4 into District 6.

Ms. Ziegler said one was Herald Harbor and the other was Crownsville Hospital.

Mr. Greene asked if those areas were being taken out in the simple adjustment.

Ms. Ziegler said that the simple adjustment follows all of the existing boundaries.

Ms. Ziegler pointed to the refinement map and showed areas that would be moved; an area in District 4 would become District 2; two areas in District 4 would become District 1; an area in District 2 would become 3; an area in District 6 would become District 4; an area in District 7 would become District 6.

Ms. Carey stated that given the fact that the deviations in the simple adjustment map are within the parameters that are acceptable, she questioned if there was a reason to move the people from district to district as shown on the refinement map.

Mr. Greene responded by saying that is the reason for the public hearings.

Ms. Carey said a concern she has with the refinement map is that the plan is not as compact as the simple adjustment map and there are more borders among the districts that are affected by the refinement map.

Ms. Carey said that she views the map which shows balanced population as being for informational purposes only and asked if anyone had a comment regarding the map.

Ms. Schuett agreed with Ms. Carey.

Ms. Carey asked if anyone had any comments or questions regarding the Simple Adjustment Map or the Simple Adjustment Refinement Map.

Ms. Carey stated that the Commission appeared ready for the public hearing with the Simple Adjustment and Simple Adjustment Refinement Maps that have been presented at this meeting.

Ms. Ziegler described the Google Web Site to the Commission but was unable to show them the site due to some technical difficulties with her laptop.

There was further discussion among the Commission and Planning and Zoning concerning what maps would be made available to the public prior to the public hearing.

Mr. Haire stated that he had emailed some maps that he created but there was a problem with the file that was sent and no one could open them.

There was further discussion regarding Mr. Haire's maps and the discussion will be continued at the next meeting on June 8, 2011. Mr. Haire stated that Dan LaDorf, a political consultant, prepared the maps for him.

Adjournment

On motion of Ms. Schuett, seconded by Mr. Greene, the meeting was adjourned at approximately 9:57A.M.

Respectfully submitted,

Lee L. Longo
Reporter

ANNE ARUNDEL COUNTY CHARTER REVISION COMMISSION
Minutes - Meeting #5
June 17, 2011 - 9:00 A.M.
Council Chambers, Arundel Center, Annapolis, MD

The meeting convened at 9:16 A.M. with the following members present:

Jana Carey
Linda Schuett
Joshua Greene (arrived at 9:31 a.m.)
Jason Rheinstein (arrived at 9:16 a.m.)

Commissioner Dirk Haire was absent.

Also present were:

Beth Jones, Future Administrative Officer
Amy Tate, Legislative Counsel
Lee Longo, Reporter to the Commission
Margaret Kaii-Ziegler, Demographer, Office of Planning and Zoning
Carole Sanner, Office of Planning and Zoning

Approval of Minutes

The minutes of June 1, 2011 were approved as presented.

Discussion of Maps Prepared by Commissioner Dirk Haire – Presented by Margaret Kaii-Ziegler, Demographer, Office of Planning and Zoning

Ms. Ziegler stated that the biggest concern with Proposed Alternative 1 is splitting Odenton Town Center between two districts. She said that currently Odenton is in District IV.

Carole Sanner, Office of Planning and Zoning, stated that the Odenton Town Center has its own plan which was adopted by the County Council for the development of the entire Town Center. She said that splitting the Town Center would be detrimental to the plan.

Ms. Ziegler said that each of the three proposed alternatives prepared by Mr. Haire has different issues. She stated that the splitting of Odenton is in all three of the alternatives.

Mr. Rheinstein asked if the railroad track was used as a boundary, are the areas east and west of the railroad track different in how they would identify the population.

Ms. Sanner stated that Odenton considers itself to be a community. She said that they could move things around to see what it does to the existing population count but wouldn't recommend it as a viable alternative.

Ms. Schuett said that she has worked with the West County Chamber of Commerce, some of the developers and people who are interested in that area, and believes it would be a major mistake to split any of the Odenton area.

Ms. Schuett said she believes that Proposed Alternative 1 was based on her question whether there was a way to bring Crownsville together. She stated that she would withdraw that request based on this map and is no longer in favor of Alternative 1 based on what it does to Odenton.

Ms. Ziegler stated that there are other splits in Alternative 1 which would require moving population around. She said that Solomon's Ridge is split into two districts; Crofton is split, but does not address the whole Crofton issue. She also pointed out that with the splits, Councilman Benoit would no longer be in District IV.

Mr. Rheinstein said that Councilman Benoit would not be running again because he is term limited. He stated that he is in favor of putting waterfront communities together in District VI. Mr. Rheinstein said that the entire north shore of the Severn River is in District V. The two precincts that are currently in District IV that encompass the communities of Herald Harbor, Arden, Indian Landing, etc., along the south shore of the Severn River share a lot of issues with the other communities that are further down the river. He said that splitting the south shore of the river doesn't seem to make a lot of sense.

Ms. Ziegler said that Proposed Alternative 2 shows Odenton and Piney Orchard split in half. She stated that Piney Orchard is another area that is of concern. She said Peachtree Mobile Home Park, Baldwin Hills and Solomon's Ridge are other areas shown on Alternative 2 that are split.

Ms. Ziegler said that Proposed Alternative 3 also shows Odenton Town Center being split. She said that Crofton becomes more split in Alternative 3; Brooklyn Park and Heritage Harbor are also split in this alternative.

Ms. Sanner said that Brooklyn Park is an area that has been working very hard to revitalize communities and they have been working with Economic Development and Community Development Services to set programs for their communities. She said that from a planning standpoint, splitting Brooklyn Park could become problematic.

Mr. Rheinstein stated that he has looked at these alternatives closely and he believes that all of these issues appear to happen with all of the alternatives because it looks like roads have been used as boundaries between Council Districts.

Ms. Schuett asked Ms. Ziegler if she has looked at the current districts to see whether the current districts have any of the issues that have begun to be identified in the various alternatives.

Ms. Ziegler responded affirmatively. She said that she can see why they have the lines where they have them. She said that if you go to the Adjusted Refinement 1 Map you will see that she created little polyps which don't exist and the continuity is

somewhat comprised.

Ms. Ziegler stated that existing Council District boundaries follow roads, stream valleys and open space outside of subdivisions. She said that the way communities develop and act don't necessarily follow the geographic boundaries that would make the map look good. She gave the example of Heritage Harbor which is split in the third alternative. She said it is a retirement community and it has an organization for the community, yet with this proposal it would be split into two different districts, which doesn't make a lot of sense from a community standpoint.

Mrs. Carey recognized Mr. Greene's arrival and asked Ms. Ziegler to summarize her concerns with Alternatives 1 and 2 for Mr. Greene's benefit.

Ms. Ziegler stated all three of the alternatives are from Mr. Haire. She said that a concern that the Office of Planning and Zoning has with Alternative 1 is the split of the Odenton Town Center. She said with Alternative 2 Odenton Town Center and Piney Orchard is split which is a concern with P&Z.

Ms. Ziegler said that with the current discussion on Alternative 3, the concern is with Brooklyn Park, Heritage Harbor and Odenton Town Center.

Mr. Rheinstein said that he lives in Severna Park which is currently split between Districts 3 and 5. He asked Ms. Ziegler if it would be possible to see the zip code boundary map as it currently exists and with the alternatives, and also the school district, the high school attendance areas.

Ms. Ziegler said that on the Google website, she has made available zip codes and school feeder districts. She stated that zip codes don't necessarily follow community boundaries. She said that the Simple Adjustment Refined Map which shows the boundaries is also on the website. Ms. Ziegler said that the school feeder districts are by high school. She stated that there are changes in the school district boundaries and she is meeting with the school board next week to get the revised boundaries.

Ms. Ziegler showed the Commission the Google website and how it works by using Severna Park as an example. There was further discussion regarding the website among the Commission members and Planning and Zoning regarding the website.

Ms. Ziegler stated that she looked at the racial breakdown of the three alternative maps and said that there was a significant racial change in District 1 and District 4 and wanted the Commission to be aware of this change.

Mrs. Carey asked Mr. Greene if he had any comments regarding Mr. Haire's three proposals.

Mr. Greene said that only one of the proposed alternatives should be considered and that would be number one. He said that he appreciated Mr. Haire's efforts.

Mr. Rheinstein agreed with Mr. Greene regarding the Proposed Alternative Map 1

Discussion of Public Hearing Scheduled for June 27, 2011

Mrs. Carey asked if the maps should be on exhibit for the public hearing. She stated that she would rather get the public input first without putting any maps on display. She said that she spoke with Ms. Holmes, Administrative Officer, County Council, and that Ms. Holmes stated that in the past the Commission simply opened the public hearings after just a brief opening statement.

After further discussion among the Commission, it was decided not to display any maps for the public hearing other than the current district map showing current population numbers in each district.

Mrs. Carey asked the members to e-mail to her, further comments or suggestions for the opening statement that she will read at the public hearing.

Mr. Rheinstein asked that the three proposed alternatives be put on the Google website so the Commission would be able to work with different scenarios. The Commission unanimously decided that no member would give out the information regarding the Google website.

Ms. Ziegler said that she would make Mr. Haire's maps available on the Google website.

There was discussion regarding the time limit for the public hearing. The Commission decided to give the public two minutes per person. It was further decided that an e-mail address would be provided for public comments or considerations.

There was discussion regarding that a notice be made available on the website Monday, June 20th regarding the public hearing which would include Ms. Tate's e-mail address.

Mrs. Carey said that she would send Ms. Tate the draft of the public notice after she receives it from Mr. Greene. Ms. Tate will include the cutoff date of Friday, July 1st for receiving the e-mails in the notice and make it available on the County website on Monday, July 20th.

Review of Schedule

Mrs. Carey asked Ms. Tate when the Interim Report was due to the County Council.

Ms. Tate said that the report is due on Monday, July 18th. She said that her intention is to have the Interim Report finished by July 1st for the Commission to review.

The Commission agreed that no further meeting was needed before the public hearing on June 27, 2011.

Ms. Schuett and the Commission thanked Ms. Ziegler for all of her hard work and told her it was greatly appreciated.

The next meeting will be held on Friday, July 1, 2011 at 9:00 a.m.

Adjournment

On motion of Mr. Rheinstein, seconded by Ms. Schuett, the meeting was adjourned at approximately 10:37A.M.

Respectfully submitted,

Lee L. Longo
Reporter

ANNE ARUNDEL COUNTY CHARTER REVISION COMMISSION

Minutes

Public Hearing

June 27, 2011 - 7:00 P.M.

Council Chambers, Arundel Center, Annapolis, MD

Mrs. Carey, Chairman, called the meeting to order at 7:00 P.M. There were approximately 15 persons in the audience. The following Commission members were present:

Jana Carey
Linda Schuett
Dirk Haire
Joshua Greene
Jason Rheinstein

Also present were:

Judy Holmes, Administrative Officer
JoAnne Gray, Assistant Administrative Officer
Amy Tate, Legislative Counsel
Lee Longo, Reporter to the Commission
Approximately

Mrs. Carey explained that every ten years, in the year following the last National Census, the County Council is required to appoint an Anne Arundel County Charter Review Commission. The purpose of the Commission is to evaluate the composition of the County Council Districts and to make recommendations to the County Council for any necessary adjustments to the boundaries of those Districts. The goal is to ensure that each member of the County Council represents about the same number of people in order to achieve equal representation for all. In Maryland, the goal for each District is to be within 5% of the average District population. The Constitutional guidelines for redistricting advise ensuring the compactness and contiguity of the geographic area in each District, and maintaining communities of interest. Mrs. Carey said that County Council Districts 1 and 4 have experienced significant changes in the size of their population since the last Census. She said that the population of these Districts currently deviates from the average District population by more than 5%, with District 1's population being 9.3% below the average District population and District 4's population is 10.93% above the average District population.

Mrs. Carey stated that the Commission's first issue is that of the County Council Redistricting and that the purpose of this Public Hearing is to seek public input on this issue

Public Hearing

Joan Turek, Harwood (District 7), stated that her community is not fairly represented in the County Council because the candidates elected in District 7 are usually from Crofton, since Crofton has a larger population than the southern part of the District, and the interests of the Crofton voters are different from those of the voters in the southern part of District 7—i.e. “South County-- where she lives, which is more rural in nature. . She asked that South County be put into a District with other communities of similar interest.

Charlotte Smutko, Lothian (District 7), asked that South County be put into a District with other communities of similar interest in order to be fairly represented.

Brian Griffiths, Pasadena, (District 3), stated that districts in the County should be representative of the communities in which they serve.

Bob Gallagher, Shadyside (District 7), stated he is Co-Chair of the Anne Arundel County Chapter of the League of Conservation Voters and asked what other issues the Commission will be involved in other than redistricting. He suggested that the formal Comprehensive Rezoning process is a good one. It started out several years ago as a Small Area Plan with citizen involvement and applications had to be filed by a deadline. He said that Planning & Zoning would review the applications and recommended what they thought was consistent with the standards and then it would end up in a bill which was presented before the Council. He stated that is where the problems start.

Mrs. Carey explained that the second purpose of the Commission is to review the County Charter and recommend to the County Council any suggestions for advisable changes to the Charter.

Ms. Schuett told Mr. Gallagher that if he had a specific proposal, she would be happy to hear it or read it if he would put it in writing.

Ms. Turek stated that the Commission did not advertise this meeting and there are people in South County who are interested in this process and asked for the next meeting to be better advertised.

Mrs. Carey said that another public hearing will be held on Monday, July 25 at 7 p.m. in the County Council Chambers. She also stated that the meetings of the Commission are public and the schedule is posted on the County website.

There was no one else present who wished to speak, and the public hearing was concluded.

Adjournment

The meeting was adjourned at approximately 7:15 P.M.

Respectfully submitted,

Lee L. Longo
Reporter

ANNE ARUNDEL COUNTY CHARTER REVISION COMMISSION
Minutes - Meeting #6
July 5, 2011 - 9:00 A.M.
Council Chambers, Arundel Center, Annapolis, MD

The meeting convened at 9:02 A.M. with the following members present:

Jana Carey
Dirk Haire
Linda Schuett
Joshua Greene
Jason Rheinstein

Also present were:

Beth Jones, Administrative Officer
Amy Tate, Legislative Counsel
Lee Longo, Reporter to the Commission
Margaret Kaii-Ziegler, Demographer, Office of Planning and Zoning
Carole Sanner, Office of Planning and Zoning
Deborah Sosnoski, Anne Arundel County Professional Fire Fighters (audience)

Approval of Minutes

The minutes of June 17, 2011 were approved as presented.

Review and Discussion of Maps Prepared by Dirk Haire

Mrs. Carey asked if there were questions regarding Commissioner Haire's maps.

Mr. Greene asked that Mr. Haire do a presentation of the maps.

Mr. Haire stated that he asked someone he knew that had the software to produce maps, to see if he could draw a South County rural district and balance the population to as close to a zero percent deviation possible. Mr. Haire referred to Proposed Alternative One and suggested that with this alternative, Crofton and Odenton could be put together in District Four, although that might cause more of a deviation. He stated that if some part of Crofton were left in District 7 then the population number would be more within the accepted deviation. Mr. Haire said this would create a South County district which the people in South County want as stated at the Public Hearing on June 27th. He went on to say that Districts Six, Five and Three would remain the same and District Two would become a North County District with Ferndale, Brooklyn Park and Linthicum.

Mrs. Carey stated that Planning and Zoning had concerns with all three of the alternative maps because they split existing political subdivisions and communities of interest.

Mr. Haire responded by saying that as long as everyone was on board with some slight deviations, then Ms. Ziegler (Planning and Zoning Demographer) would be able to address those concerns by changing the boundary lines.

Mrs. Carey stated that she believes it is preferable to leave existing districts intact as much as possible and maintain the population of each district within the five percent deviation. She said she doesn't think people like to be moved around in terms of where they go to vote and what district they vote in.

Mr. Haire stated that it appeared at the public hearing that people want more substantial changes.

Mr. Rheinstein said that it is his opinion from talking to some of the residents in South County and Crofton that they are not very happy with the way things are now. The people in South County don't want Crofton in their District because they feel they do not get fair representation from their Councilman. He said that some residents in Crofton feel that it makes sense for Crofton and Odenton to be put together in District Four.

Mr. Greene stated that he is a long-time resident of Crofton and he believes there will be strong support to realign what is now District Seven. He said there would not be support to split Crofton into two Districts. Mr. Greene said that he is in favor of the Proposed Alternative One Map with Planning and Zoning making sure that large or known communities not be split.

Ms. Ziegler showed a map on the computer that showed all of Crofton moved out of District Seven and when rebalancing the remaining districts, District Seven showed a negative 24 percent. She said that if District Seven was to be maintained under this scenario, then there would have to be more than Seven Districts to balance the population.

Mr. Rheinstein stated that the Supreme Court has said that the maximum deviation that is tolerable is ten percent. He said that he believes the next best alternative is to look at rural areas that are further north in the county and group them together. Another way is to have more than seven districts which is not feasible at this point.

Ms. Ziegler said there are problems with putting all of Crofton together and all of Odenton together and moving District Seven up to Crownsville. She said that she thinks that District Six would have to split across the Severn River and District Five would start going into District Three. She stated that geographic boundaries would have to be crossed and doesn't know how acceptable that would be.

Mrs. Carey stated that the numbers must be kept within the standard deviation as required by the Maryland Constitution and the natural and political boundaries must be respected.

Mr. Rheinstein shared some of his thoughts regarding the Proposed Alternative One Map which would unify all of Crofton and Odenton and put them into a District that is compact and that meets the population requirements. The boundaries of District One and District Four would change.

There was a lengthy discussion regarding different scenarios about Districts Four and Seven and several of the other districts and boundary lines based on the suggestions by Mr. Rheinstein.

Ms. Sanner stated that she would like to provide the Commission with a copy of the map that shows how the small area plans are laid out. She said that throughout the general development process communities asked if their small area plans were still intact and if that is the basis from which Planning and Zoning would be doing the County plan. Planning and Zoning assured them that was true.

The Commission asked Ms. Ziegler to provide adjustments to the deviations based on the map that Mr. Rheinstein suggested. Mr. Rheinstein also asked Ms. Ziegler to provide comparison scenarios for all of the maps that have been provided so far.

Review of Schedule

Mrs. Carey suggested that the Commission have a meeting Tuesday, July 12, 2011 at 3:30 p.m. to go over the map that Ms. Ziegler will provide, go over the map that shows the small area plan layout and to finalize the Interim Report. The Commissioners agreed.

Adjournment

On motion of Mr. Greene, seconded by Mr. Haire, the meeting was adjourned at approximately 11:35A.M.

Respectfully submitted,

Lee L. Longo
Reporter

ANNE ARUNDEL COUNTY CHARTER REVISION COMMISSION
Minutes - Meeting #7
July 12, 2011 – 3:30 P.M.
Council Chambers, Arundel Center, Annapolis, MD

The meeting convened at 3:53 P.M. with the following members present:

Jana Carey
Linda Schuett
Jason Rheinstein
Dirk Haire

Mr. Greene was absent.

Also present were:

Beth Jones, Administrative Officer
Amy Tate, Legislative Counsel
Margaret Kaii-Ziegler, Demographer, Office of Planning and Zoning
Carole Sanner, Office of Planning and Zoning
Dwayne Lee
Jacqueline Allsup, NAACP
Frank Smith, Patch.com
Erin Cox, The Capital
Councilman Jerry Walker

Approval of Minutes

The minutes of July 5, 2011 were approved as amended.

The minutes of June 17, 2011 were amended to reflect that the meeting convened at 9:16 A.M.

Discussion of Interim Report to the County Council and Attachments

Mrs. Carey inquired of Ms. Tate whether the County Council had obtained from the County Office of Law an opinion on whether the districts' population deviations from the ideal district population result in a legal requirement that the County redistrict this year. Ms. Tate reported that an opinion had been given and that it had advised that the Council should abide by the 10% deviation requirement, such that each district's population should fall within a range of no more than 10% above or 10% below the ideal population. Therefore, she advised that the Commission should ensure that its recommendations abide by the requirement. Since District 4's population exceeds the ideal population by more than 10%, a recommendation to redistrict is necessary.

Mrs. Carey inquired if the map entitled Crofton Move Revised, prepared by Ms. Ziegler, should be included in the Report to the County Council. Ms. Tate informed her that the Commission is including them to show what work the Commission has done, not necessarily what is up for consideration.

Mr. Rheinstein stated that the Crofton Move Revised map is unique in that it does not meet the balancing requirements. Ms. Tate pointed out that the Report states that this map does not meet the balanced population criteria. Ms. Kaii-Ziegler indicated that she did not create a larger printed map because, when the Crofton Move map was first discussed, a motion was made to only consider alternatives that met the requirement of less than 5% deviation in population.

Mrs. Carey stated that all the maps, except that one, have been structured to where the population falls within the 10% rule. Ms. Schuett stated that she does not think it matters. They are all documents of public record and including them does not give the Commission's viewpoint on them but, rather, informs the County Council of what the Commission is reviewing in its process.

Mr. Rheinstein inquired if the map could be re-titled "Crofton Move Work in Progress". Ms. Schuett inquired if there was time to change titles, make new copies, etc. before the deadline for their presentation. Mrs. Carey said it was her understanding that the maps would not be on display at the County Council meeting. Ms. Tate indicated they would be included as appendices in the report. She indicated that they would be in color if she could get them done by a printer in time.

Ms. Schuett stated that she thought the report was excellent. There was discussion as to how the minutes and maps should be incorporated into the report.

Mrs. Carey asked the Commissioners if they wanted to give the Crofton map a different name, leave it as it is, or take it out of the report together. Mr. Rheinstein stated that it should not be taken out. Ms. Kaii-Ziegler stated that in the Crofton Move map she took Crofton out of District 7 and then redistributed the population of the other six districts. Ms. Schuett inquired if the description of Crofton Move in the report was accurate. Ms. Kaii-Ziegler was not sure. Ms. Tate stated that she thought the Commission should just rename this particular map.

Mr. Haire stated the Commission has not considered anything yet, they have discussed possibilities, and he thinks the report reflects that. He indicated that the maps being discussed would probably not get much further consideration. It was simply to indicate that all maps were open to discussion.

Ms. Kaii-Ziegler stated that the name could be "Current Existing District 7 without Crofton". That is a more accurate description of the map. Ms. Tate asked to include non-balanced under the title. The Commission voted to adopt this as the new name for the map.

Mr. Rheinstein made a motion that they change the name of "Balanced Population Only" to "Computer Generated Balanced Population Only" and in parenthesis underneath include "For discussion purposes only". He amended his motion to "Computer Generated Balanced Population Only". The Commission passed the motion.

Mrs. Carey inquired if there was any further discussion regarding the maps or report to the County Council. No one indicated any concerns.

Mr. Rheinstein asked about drawing a map that actually has the proposed districts the same color as the seven current districts. Mrs. Carey stated that the original map was done that way.

Presentation of Small Area Plan Layout

Ms. Sanner, Office of Planning and Zoning, stated that they did take a look at the small area boundaries. She indicated that in creating the small area boundaries, they had to be divided between districts.

Review of Schedule

Mrs. Carey inquired about setting up the next meetings. Ms. Schuett asked about the agenda for the Commission. Mrs. Carey indicated it was the continued discussion of the plans and which ones would be recommended. Ms. Schuett thought the next important event was the next public hearing. She thinks they have discussed the maps a lot already. Mr. Rheinstein stated that he agreed with Ms. Schuett.

Mrs. Carey inquired about getting more publicity for the hearings. Ms. Tate stated that a press release was sent to all local papers, web-based newspapers, and the Legislative Assistants were e-mailing their community associations. Ms. Jones mentioned that it was on the website and on the cable announcements.

Mrs. Carey stated that the Commission's second Public Hearing is scheduled for July 25, 2011 and she believed a meeting was not needed before the hearing. The next meeting was scheduled for Tuesday, August 2, 2011 at 9:00 A.M. to discuss the outcome of the public hearing. Friday, August 12th, at 9:00 A.M. and Monday, August 22nd were also scheduled as meeting dates.

Adjournment

On motion of Mr. Rheinstein, seconded by Ms. Schuett, the meeting was adjourned at 4:30 P.M.

Respectfully submitted,

Kathleen Buinickas