



# Green Infrastructure Master Plan

## Anne Arundel County, Maryland

Presentation to the Citizens Environmental Commission

**Cindy Carrier**  
**Michael Stringer**  
**Desirae Williams**  
**Kari Nye**  
**Erica Matthews**

February 18, 2021





# Introductions

## 2. Citizens Environmental Commission Meeting



## CEC Green Infrastructure Meetings

1. Introduction, Review Purpose, Criteria, and Process (Tonight)
2. Review Draft Network and Implementation Actions (April)
3. Review Draft Plan Document (June)

### 3. Role of Citizens Environmental Commission



## Topics

1. Plan Status and Purpose
2. Green Infrastructure Network Definition and Criteria
3. Public Involvement Process
4. CEC Involvement

**4. Citizens Environmental Commission Meeting**



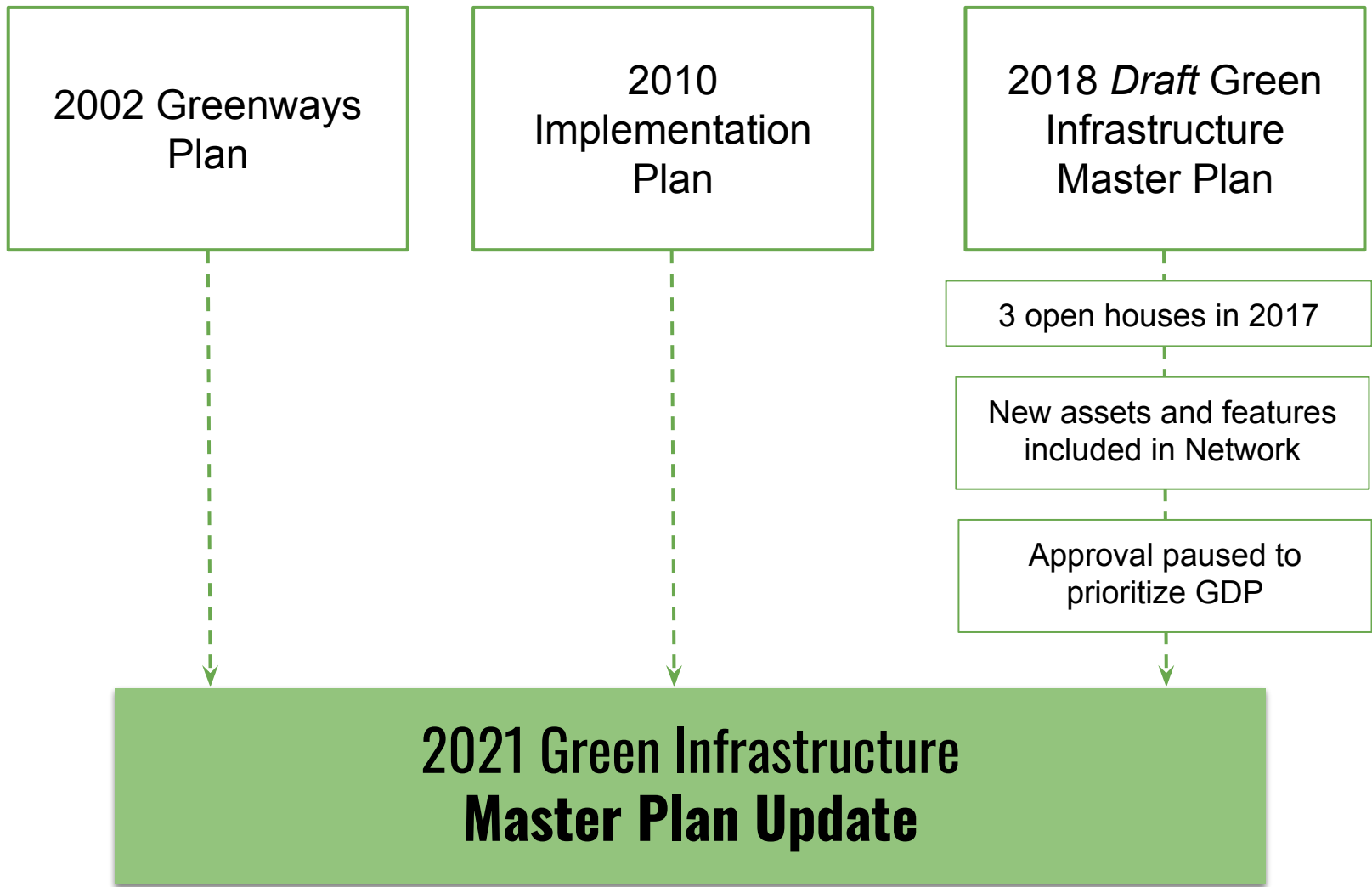


- **Purpose:** Protect largest natural areas in the County and connections between them.
- **Vision:** Create an interconnected system of green infrastructure that protects ecologically valuable lands, increases quality of life for residents, provides greater recreation and transportation options, improves water quality, aesthetic quality, biodiversity, and reduces pollution for present and future generations.
- **Use:**
  - Land and easement acquisition
  - Development review



## 5. Plan Purpose & Vision





## 6. Plan History and Status





## The Big Picture

Plan2040 is the General Development Plan for Anne Arundel County. It sets the policy framework to protect the natural environment, shape development of the built environment, provide public services to promote healthy communities, and support a diverse, resilient economy. Plan2040 provides a shared, long-range framework for County elected officials, staff, and community members for addressing land use issues. It balances many competing demands on land use by creating consistent development patterns.

Plan2040 was developed through dozens of public forums and is informed by thousands of comments from the community. There are many common concerns throughout the County, including traffic congestion, school capacity, environmental protection, and housing affordability. These issues are complex and broad, addressing them requires the efforts of over 20 County departments, along with State and Federal agencies, non-profit organizations, and the private sector. Plan2040 includes goals, policies, and strategies to address these issues and manage development and redevelopment.

Plan2040's policies work together to shape a future for Anne Arundel County that is **Green, Smart, and Equitable**.

### GREEN



Regulations will be strengthened and diligently enforced, with increased investments in habitat protection and restoration.

### SMART



Land development regulations will promote redevelopment of underutilized properties and limit development of forests and farms. Better technology and management will make existing transportation and infrastructure more efficient.

### EQUITABLE

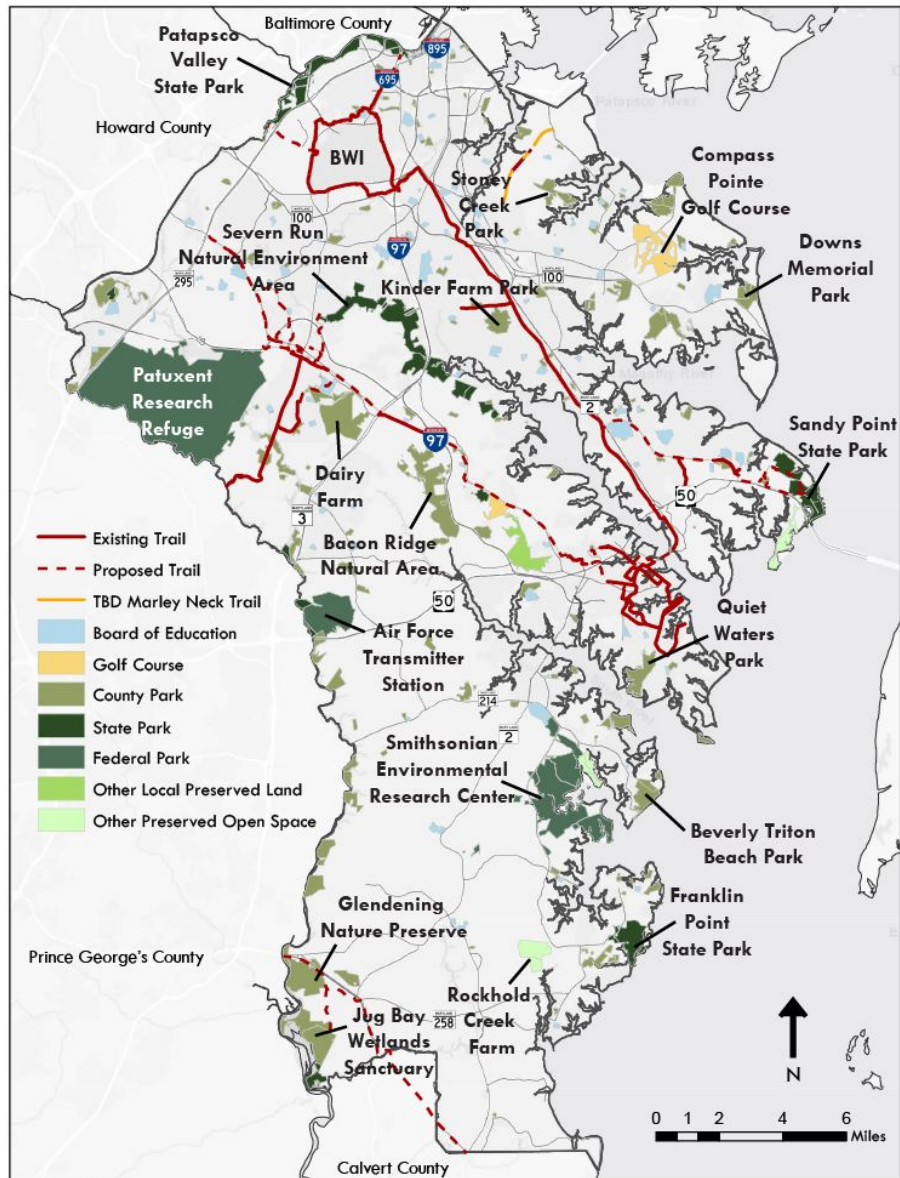


More housing options will be available in more areas of the County, and investments will be made in underserved neighborhoods to ensure all residents have access to opportunity.

1. Expand, enhance and continue to protect the County's greenways, open space, rural areas, including the Priority Preservation Area (Goal NE3).
2. Increase the amount of protected land in the County (Policy NE3.1).
3. Continue expanding the network of protected corridors of woodlands and open space as set forth in the Greenways Master Plan (Policy NE3.2).
4. Preserve 80 percent of undeveloped land within the PPA through protective easements in order to meet the State's PPA protection goal (Policy NE3.3).

# 7. Relationship to General Development Plan





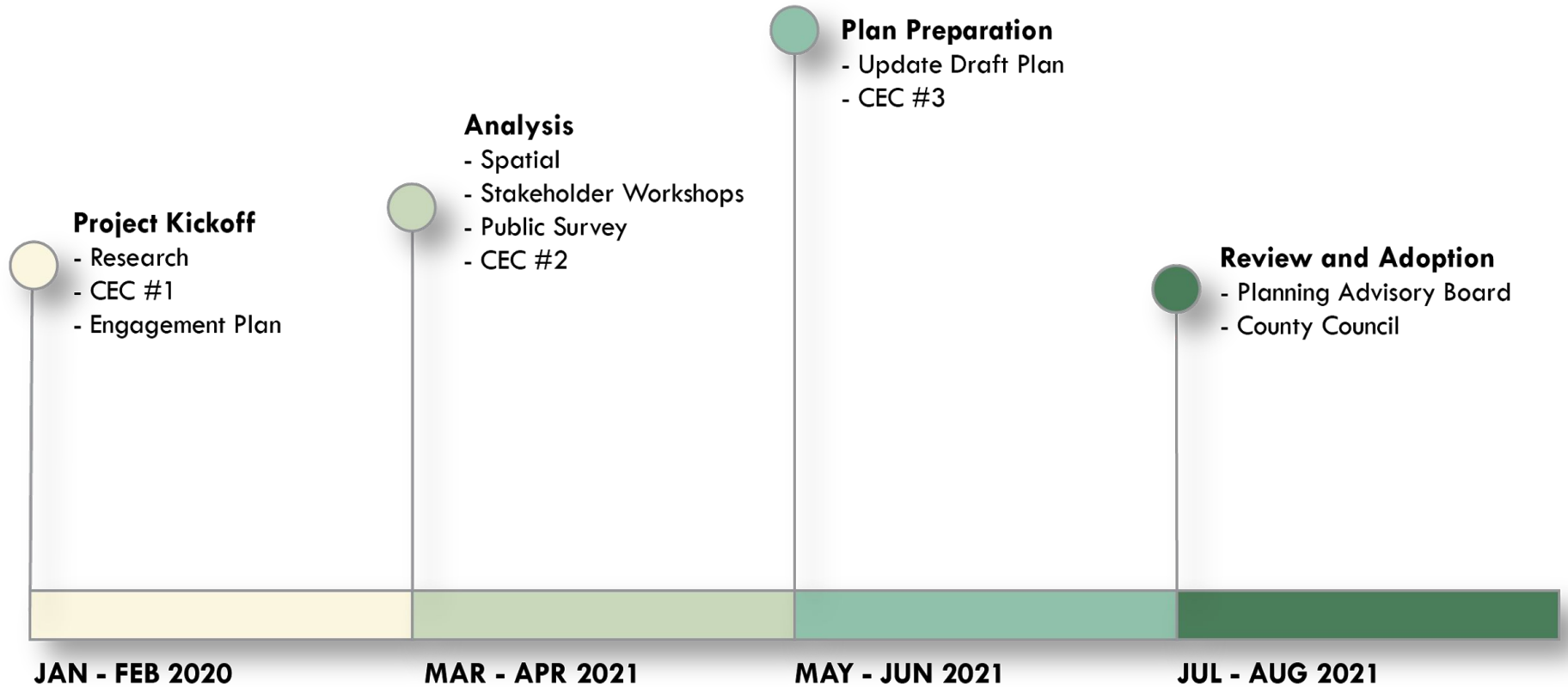
- The 2022 update to the LPPRP is being prepared.
- Green Infrastructure Plan informs the LPPRP Conservation Priorities and Goals
- Opportunity for shared analysis and coordinated community engagement

## 8. Relation to Land Preservation Parks & Recreation Plan





# GREEN INFRASTRUCTURE CONCEPTUAL TIMELINE

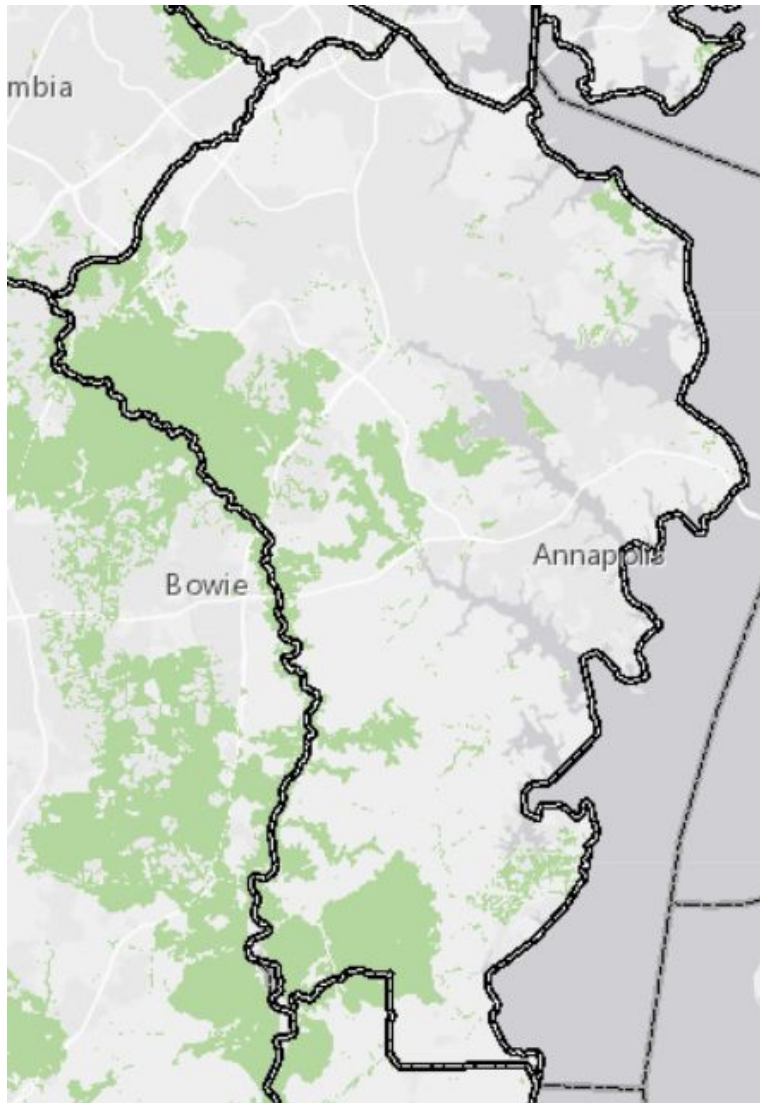


## 9. Planning Process



## Data Sources

- Land Use / Land Cover
- Aerial Photos
- Priority Forest Retention Areas
- Watershed Assessments
- Dept of Natural Resources
  - Green Infrastructure
  - Targeted Ecological Areas
  - BioNet
  - Coastal Resilience Assessment

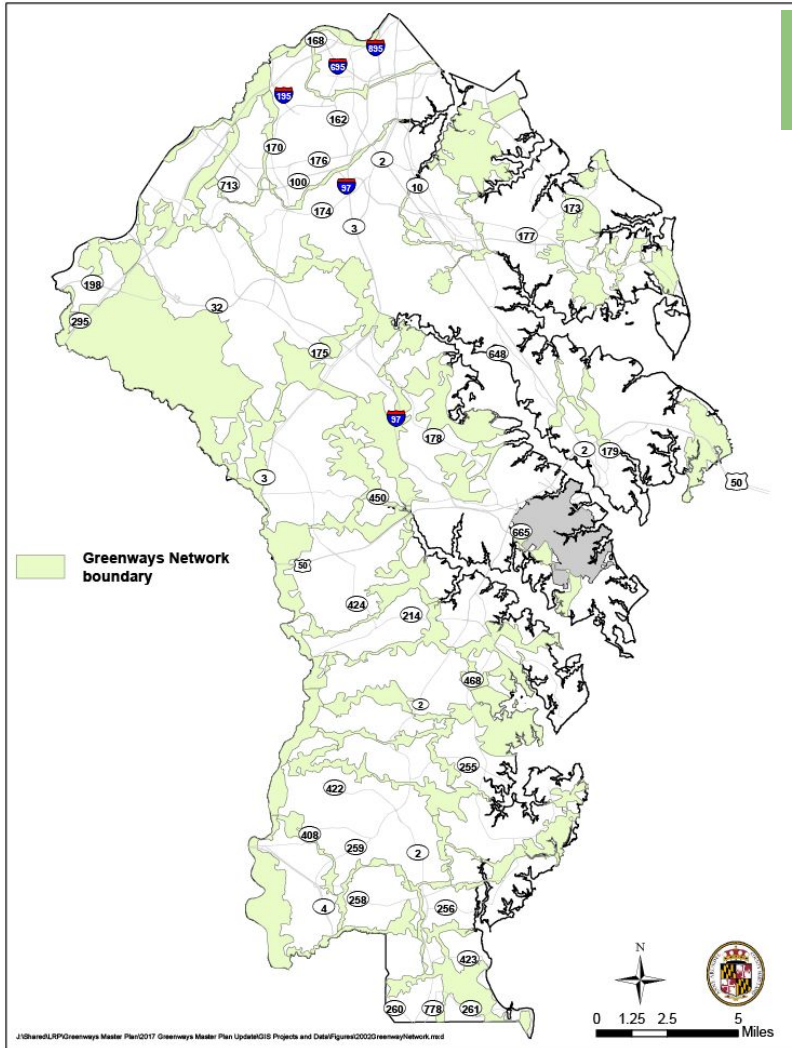


Map Source: MD DNR Targeted Ecological Areas

## 10. Data Sources



## 2002 Greenways Map



- Builds on State Green Infrastructure Assessment
- Focus on Stream Corridors
- Includes
  - Hubs: 250+ acres
  - Corridors: 200'+ wide
  - Public Lands
  - Private Lands

Map Source: 2002 Greenways Plan

## 11. 2002 Greenways Map



## Green Infrastructure

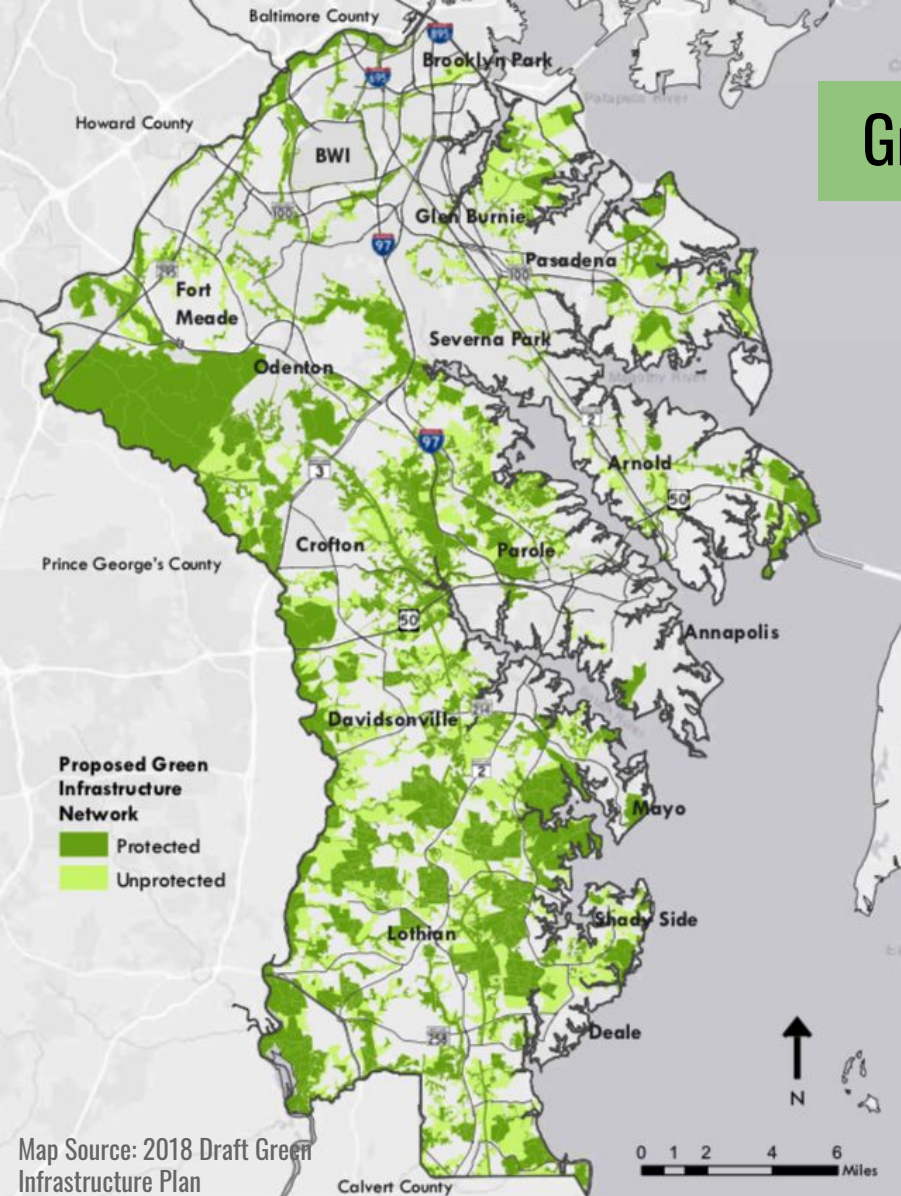
**Hubs:** 250+ acres

**Corridors:** 200' wide

**Forested Areas:** 75+ acres

Includes:

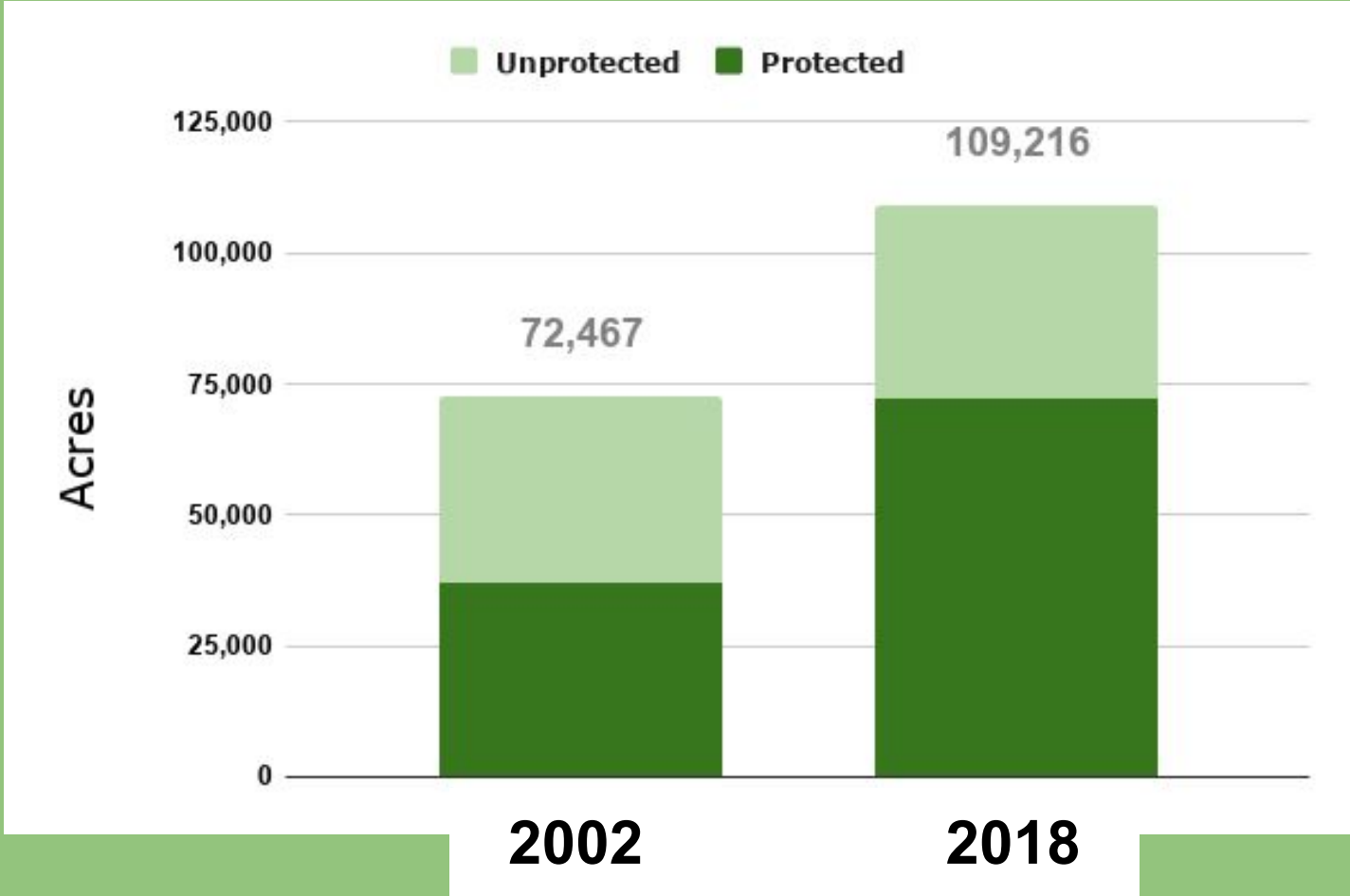
- Publicly owned parks and natural areas
- Land protected by easements:
  - Agriculture, woodlands
  - Forest
  - Land trusts
- Undeveloped, private lands
- Trails
- Historic and cultural resources



## 12. Criteria for Inclusion



# 2002 vs 2018 Maps



## 13. Land in Network

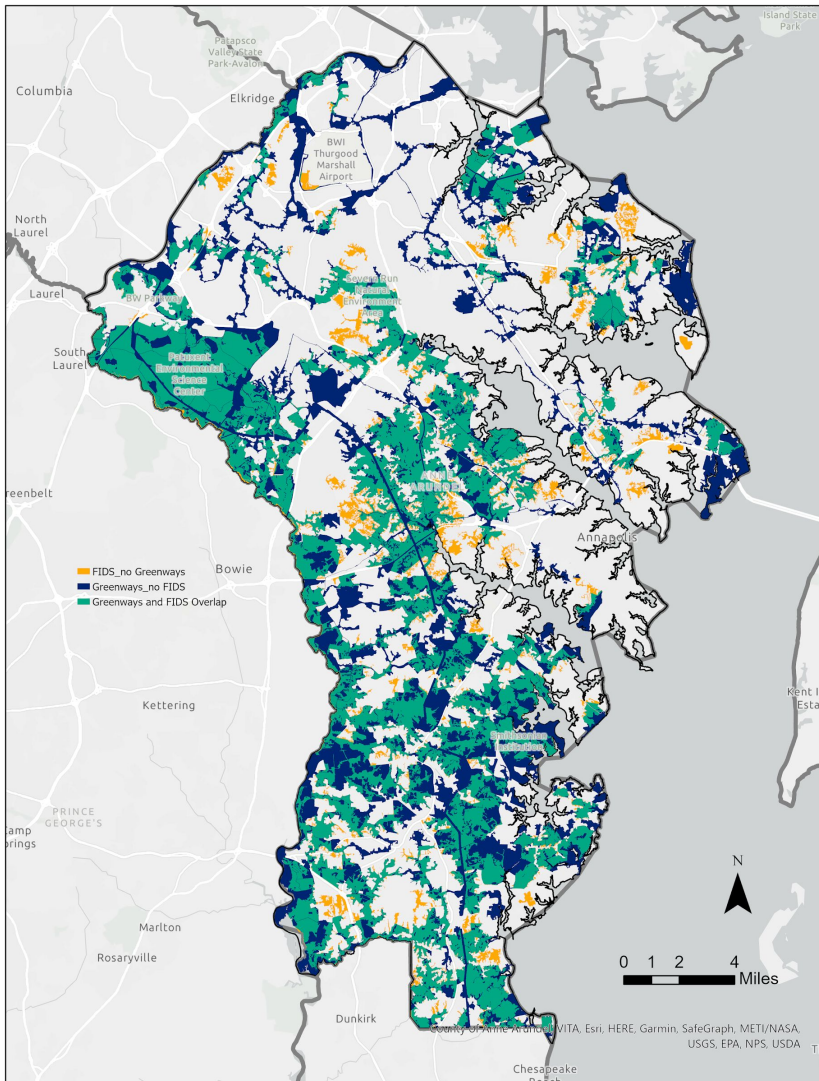


## Questions to Consider

- Should different criteria be applied to more highly developed areas (ex. North County)?
- How should trails be addressed?
- How should sea level rise be addressed?
- Should the County set a numeric target for protection of the network (acres or %)?

## 14. Discussion: Inclusion Criteria





## Update 2018 Status Analysis with:

- New subdivision activity
- New conservation easements
- New public land acquisitions

## Compare findings with additional new data, including:

- Updated FIDS data
- Coastal Resiliency Assessment

## Equity Analysis

## Estimate Ecosystem Services Values

- Utilize Department of Natural Resources study

# 15. Technical Analyses



## Questions to Consider

- What analyses are important to you?
- Are there other studies to consider?
- What are your thoughts on ecosystem service evaluation?





## Community Engagement Principles

1. Build upon Plan2040 community engagement and coordinate with LPPRP outreach
2. Strive for equitable community input
3. Understand the community perspective in how natural resource protection meets their needs.
4. Educate the public about the environmental, economic, and community benefits of green infrastructure.
5. Employ multiple avenues for community to engage with the planning process

## 17. Public Involvement Plan



## Primary Stakeholder Groups

1. Citizens Environmental Commission
2. Land Trusts, Environmental Nonprofits
3. State Agencies
4. Federal Agencies
5. Real Estate Industry
6. County Commissions (Agriculture, Recreation, Bike)
7. General Public

**Public Involvement Plan**



## Engagement Tactics

1. Virtual meetings with CEC
2. Stakeholder Workshops
3. Presentations to County Commissions
4. Digital content for public: dedicated webpage, fact sheet, open survey, social media
5. Virtual engagement with public: town hall, online open house



## Questions to Consider

- What is your perspective on this approach?
- Who do you consider to be the key stakeholders?
- Are there different communication methods or objectives that you would recommend?

**Discussion: Public Involvement Plan**



## Next Steps

1. Conduct Stakeholder Meetings
2. Complete Technical Analysis
3. Review Findings and Draft Implementation Actions with CEC
4. Prepare Draft Plan Document

**Green Infrastructure Planning Process**



# Thank you!

**Michael Stringer**

pzstri20@aacounty.org

**Desirae Williams**

pzwill20@aacounty.org

**Kari Nye**

pznye000@aacounty.org

