

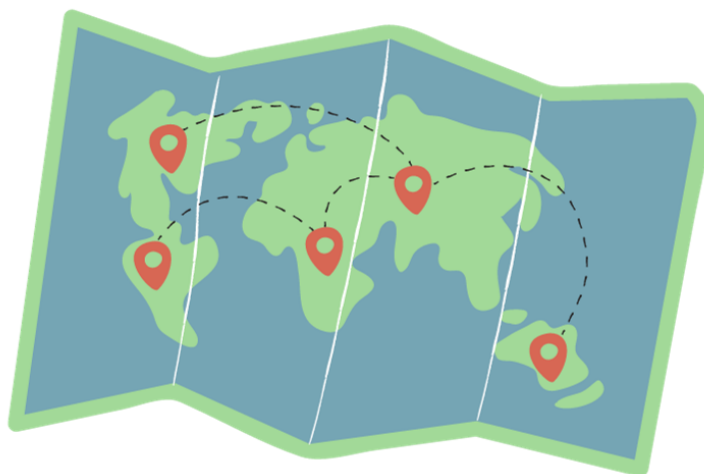
DENA SI

PASADENA SENIORS, INC.

4103 MOUNTAIN ROAD, PASADENA MD 21122

410-222-0030

2024 TRIP BROCHURE



**TRIP DESK HOURS:
TUESDAY - FRIDAY, 10:00AM -1:00PM**

410-222-0680

Trip Rules and Policies

Pasadena Seniors, Inc. (DENA SI), a 501c(3) Non-Profit Corporation

DENA SI is not a travel agency. All trips are DENA SI **FUNDRAISERS** and are open to any member of Anne Arundel County Senior Centers. Trips may require moderate to strenuous physical difficulty: including boarding and exiting a bus or boat; walking to, from, and through venues; and climbing steps or walking on uneven terrain. Participants must be self-sufficient and comply with all policies and rules. **Office hours are posted on the trip desk door.** If any accommodations are needed such as special seat assignments on the bus, **IT IS THE RESPONSIBILITY OF THE TRAVELER TO INFORM THE TRIP DESK AT THE TIME OF REGISTRATION.**

REGISTRATION

Registration and payments will only be accepted by the trip desk. Current key tags must be shown when registering for a trip. Participants must complete all of the required paperwork to include the Release of Liability form and make the appropriate deposit or payment in full by cash or check. Seat assignments will be the responsibility of the Trip Leader. It is NOT the responsibility of the trip desk to notify you of final payment due dates, **PLEASE MARK YOUR CALENDAR!** If a final payment is not received by the due date, **THE TRIP DESK HAS THE AUTHORITY TO CANCEL YOUR RESERVATION. IF A RESERVATION IS CANCELED NO REFUNDS WILL BE PROVIDED.**

WAITLIST

If all of the seats on a trip are filled, the trip desk will start a waitlist. If a seat becomes available, the trip desk will notify the next person on the list. Once notified, the person must come into the trip desk, complete the registration process and pay in full for the trip.

REFUNDS

ALL MONIES ARE NON-REFUNDABLE UNLESS A REPLACEMENT CAN BE FOUND FROM THE WAITLIST. Refunds will take place only after a replacement has been found and the trip is completed. If a trip is canceled due to lack of sufficient interest and/or by the venue or bus company; refunds will be issued promptly.

TRIP EXPECTATIONS

Participants should avoid using strong or excessive fragrances to prevent potential allergic reactions. Participants must furnish their own transportation to and from the meeting point. Parking location will be dependent upon the trip and addressed during registration. Trip participants are encouraged to carry an index card with their name, address, emergency contact and any critical or pertinent medical information. The cell phone number of the Trip Leader will be given to participants for emergency purposes. Should you become separated from the group, use this cell number to contact the Trip Leader. **BUSES WILL NOT WAIT FOR ANYONE.** Participants must adhere to scheduled arrival and departure times. Return times may change depending upon traffic. **Recommend bringing water and a snack for the return trip.** Absolutely no smoking or alcoholic beverages on the buses. Anyone who exhibits inappropriate behavior as determined by the trip leader, and approved by the DENA SI Board of Directors, may be banned from further trips.

Southeast Coast/Bahama's Cruise Overnight Trip with Royal Caribbean Cruise Line on the Vision of the Seas - 9 days/8 nights

Thursday, April 4, 2024 thru Friday, April 12, 2024

Inside Cabin Category	4V	\$897
Outside Cabin Category	4N	\$997



Rates are per person double occupancy and include cruise, port charges, and government fees. Transportation to/from the cruise pier is not included, and will be decided upon once we know the exact number of travelers. **PASSPORT REQUIRED.**

Deposit Policy: An initial deposit of \$350 per person double occupancy or \$700 per person single occupancy is required to secure reservations and assign cabins. **Final payment is due by December 5, 2023.**

For more information, please contact Nancy at the Pasadena Senior Center Trip Desk - 410-222-0680.

For reservations, please contact Grand American Tours - 1-800-423-0247. After making your reservations, stop at the trip desk to sign the liability waiver and emergency contact forms.

Friendly Farms Restaurant, Valley View Farms & Amish Market Thursday, May 16, 2024

Bus will depart from Lakeshore Shopping Plaza in front of Two Rivers at 11am to arrive at Friendly Farms Restaurant at 12pm. After an enjoyable lunch, the trip will continue on to Valley View Farms and then to the Amish Market. Bus will return to the Lakeshore Shopping Plaza at 5pm. Please park your vehicle in the large parking lot of the Lakeshore Shopping Plaza in front of Two Rivers.

Cost of the trip is \$70 per person. Payment in full is due at sign up, by April 16, 2024.

Jersey Boys Toby's Dinner Theatre Wednesday, June 26, 2024

The fascinating evolution of four blue-collar kids who became one of the greatest successes in pop-music history! JERSEY BOYS takes you behind the music of Frankie Valli and The Four Seasons. Discover the secret of a 40 year friendship as they work their way from the streets of Jersey to the heights of stardom. Filled with chart-topping hits including: "Sherry," "Big Girls Don't Cry," "Can't Take My Eyes Off You," "Dawn," and "My Eyes Adored You," which brought them their highest honor: induction into the Rock 'n' Roll Hall of Fame. Please note: Contains mature language and themes.

Bus departs Two Rivers parking lot at 10:15 am and returns at 5 pm. Deposit of \$75.00 due at sign up. Total Cost of the trip is \$115.00. Final payment due by May 3, 2024.



Choptank Crabfeast

Thursday, July 25, 2024



The Choptank Riverboat Company's reproduction of an authentic 80 foot turn-of-the-century paddle wheelers has a fully enclosed lower deck with heating and air conditioning. Covered upper deck is perfect for sight-seeing while cruising the Choptank River. Enjoy a delicious Crab Feast consisting of: Steamed Crabs, Maryland Crab Soup, Fried Chicken, Clam Strips, Corn on the Cob, Cole Slaw, Dessert and coffee, tea and sodas.

Bus departs Two Rivers parking lot at 9:00 am and returns at 5:00 pm. Deposit of \$75.00 due upon sign up. Total cost of the trip is \$120.00. Final payment due by June 28, 2024.

DANIEL

Sight & Sound

Hershey Farms Restaurant

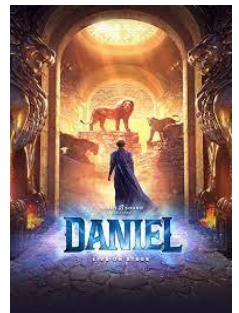
Thursday, August 8, 2024

Taken from his people, Daniel is exiled far from home in the powerful kingdom of Babylon. Now this faithful servant must navigate his new life inside a palace filled with golden statues and shifting empires. As royal pressures mount, Daniel is faced with a dangerous choice. Will his trust in the one true God remain steadfast through every test of faith?

From the fiery furnace to the infamous den of lions, DANIEL is a spectacular theatrical experience for the whole family. Witness one of the Bible's most hope-filled stories as it comes to life in this brand-new original stage production from Sight & Sound Theatres®.

Lunch at Hershey Farms Restaurant at 2:15 pm following the show.

Bus departs Two Rivers parking lot at 8:30 am and returns at 6:30 pm. Deposit of \$75.00 due at sign up. Total cost of the trip is \$160. Final payment due by July 8, 2024.



Mackinac Island

Sunday, September 22, 2024 thru Saturday, September 28, 2024

-TRIP FULL- WAITLIST ONLY-

Single room rate \$1,224

Double Room Rate \$ 975

\$75 per person due at signing

Price is per person, based on double occupancy. Add \$249 for single occupancy.

Final Payment Due: 7/15/2024

Cost includes:

Motorcoach transportation

6 nights lodging including 4 consecutive nights in Northern Michigan.

10 meals: 6 breakfasts and 4 dinners

Guided Tour of Mackinaw City

Visit to Mackinac Island, including a Guided Carriage Tour

Boat ride through the Soo Locks and free time and sight-seeing in Sault Sainte Marie

Visit to Mackinaw Crossings

Admission to Colonial Michilimackinac

Gaming excitement at Northern Michigan Casino

Bus will depart at 8am from Green Valley Supermarket, Chesterfield Plaza.

Hollywood Casino at Charles Town Races

Wednesday, October 16, 2024



Bus departs Two Rivers parking lot at 9:00 am and returns at 5 pm. Cost of the trip is \$50, paid in full at sign up. Each participant will receive \$20 in slot play. Sign up by September 13, 2024.

White Christmas
Dutch Apple Dinner Theatre
Wednesday, November 27, 2024

Based on the beloved movie. Two male singers meet a sister duo and follow them to an inn in Vermont. They discover it's owned by their old Army General who fell on hard times. The foursome decides to put on a show to save the inn. Hear your favorites "Blue Skies," "Sisters," "Happy Holidays," and "White Christmas."

Bus departs Two Rivers parking lot at 9:00 am and returns at 6:00 pm. Deposit of \$75 due at sign up. Total cost of the trip is \$115. Final payment due by October 30, 2024.

2024

January

Sun	Mon	Tue	Wed	Thu	Fri	Sat
31	1	2	3	4	5	6
7	8	9	10	11	12	13
14	15	16	17	18	19	20
21	22	23	24	25	26	27
28	29	30	31	1	2	3
4	5	6	7	8	9	10

February

Sun	Mon	Tue	Wed	Thu	Fri	Sat
28	29	30	31	1	2	3
4	5	6	7	8	9	10
11	12	13	14	15	16	17
18	19	20	21	22	23	24
25	26	27	28	29	1	2
3	4	5	6	7	8	9

March

Sun	Mon	Tue	Wed	Thu	Fri	Sat
25	26	27	28	29	1	2
3	4	5	6	7	8	9
10	11	12	13	14	15	16
17	18	19	20	21	22	23
24	25	26	27	28	29	30
31	1	2	3	4	5	6

April

Sun	Mon	Tue	Wed	Thu	Fri	Sat
31	1	2	3	4	5	6
7	8	9	10	11	12	13
14	15	16	17	18	19	20
21	22	23	24	25	26	27
28	29	30	1	2	3	4
5	6	7	8	9	10	11

May

Sun	Mon	Tue	Wed	Thu	Fri	Sat
28	29	30	1	2	3	4
5	6	7	8	9	10	11
12	13	14	15	16	17	18
19	20	21	22	23	24	25
26	27	28	29	30	31	1
2	3	4	5	6	7	8

June

Sun	Mon	Tue	Wed	Thu	Fri	Sat
26	27	28	29	30	31	1
2	3	4	5	6	7	8
9	10	11	12	13	14	15
16	17	18	19	20	21	22
23	24	25	26	27	28	29
30	1	2	3	4	5	6

July

Sun	Mon	Tue	Wed	Thu	Fri	Sat
30	1	2	3	4	5	6
7	8	9	10	11	12	13
14	15	16	17	18	19	20
21	22	23	24	25	26	27
28	29	30	31	1	2	3
4	5	6	7	8	9	10

August

Sun	Mon	Tue	Wed	Thu	Fri	Sat
28	29	30	31	1	2	3
4	5	6	7	8	9	10
11	12	13	14	15	16	17
18	19	20	21	22	23	24
25	26	27	28	29	30	31
1	2	3	4	5	6	7

September

Sun	Mon	Tue	Wed	Thu	Fri	Sat
1	2	3	4	5	6	7
8	9	10	11	12	13	14
15	16	17	18	19	20	21
22	23	24	25	26	27	28
29	30	1	2	3	4	5
6	7	8	9	10	11	12

October

Sun	Mon	Tue	Wed	Thu	Fri	Sat
29	30	1	2	3	4	5
6	7	8	9	10	11	12
13	14	15	16	17	18	19
20	21	22	23	24	25	26
27	28	29	30	31	1	2
3	4	5	6	7	8	9

November

Sun	Mon	Tue	Wed	Thu	Fri	Sat
27	28	29	30	31	1	2
3	4	5	6	7	8	9
10	11	12	13	14	15	16
17	18	19	20	21	22	23
24	25	26	27	28	29	30
1	2	3	4	5	6	7

December

Sun	Mon	Tue	Wed	Thu	Fri	Sat
1	2	3	4	5	6	7
8	9	10	11	12	13	14
15	16	17	18	19	20	21
22	23	24	25	26	27	28
29	30	31	1	2	3	4
5	6	7	8	9	10	11