

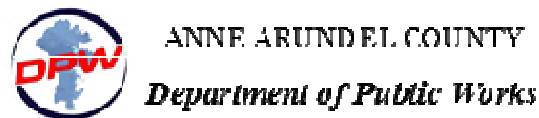
WB&A Trail Bridge at Patuxent River

Public Input Meeting

March 28, 2017

6:00 - 8:00 p.m.

Two Rivers Community Center
1425 Two Rivers Boulevard, Odenton, MD



Introduction

- Anne Arundel County
 - DRP – Rick Anthony, Director
 - DPW – Joan Viennas
 - DRP – Dawn Thomas
- Prince George's County
 - M-NCPPC – Robert Patten
- Design Consultant
 - WBCM – Randy Hughes
 - AKRF – Mark Sutherland

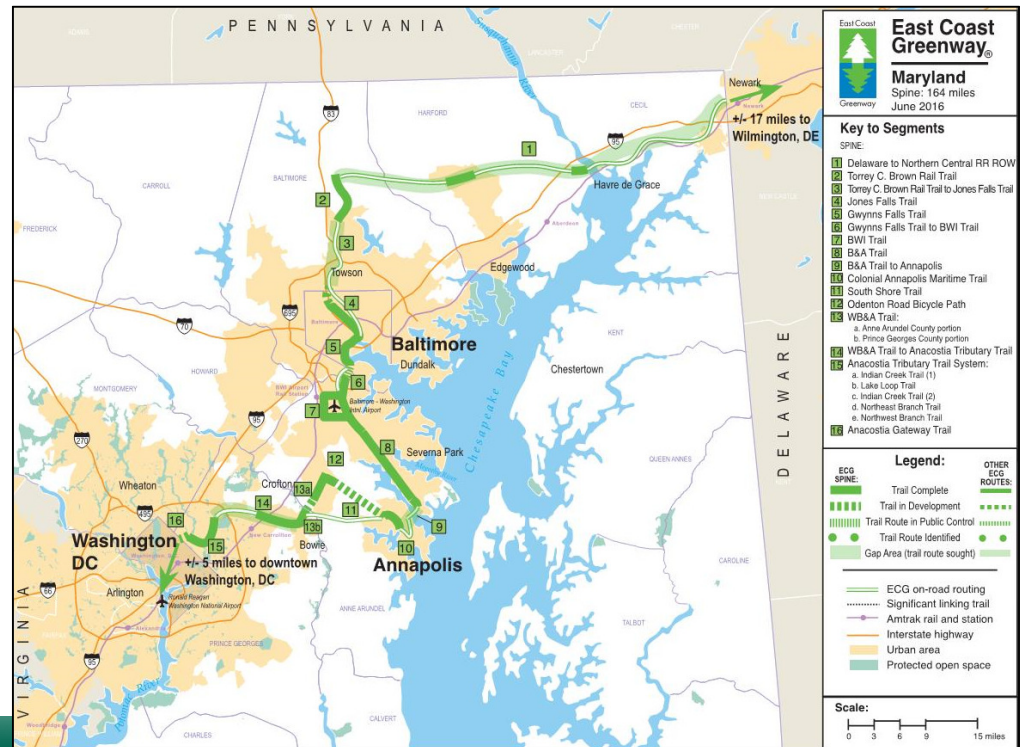
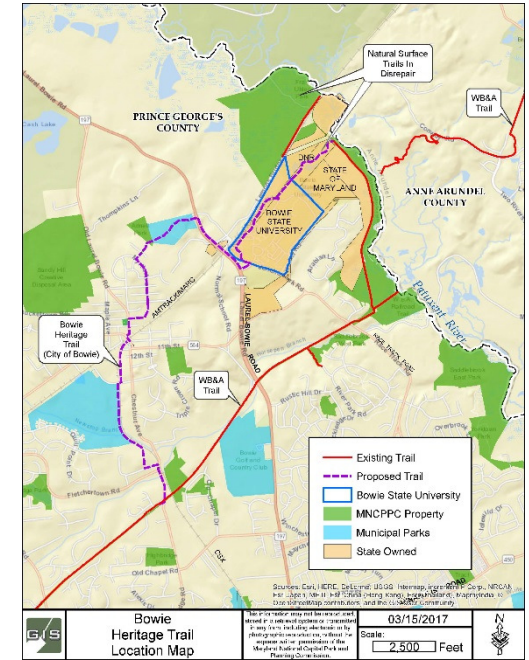
Meeting Agenda

- Project Overview
- Project Process
- Feasibility – Alternatives Assessment
- Next Steps
- Questions / Comments



Project Overview

- Intercounty Link
- Baltimore-Washington Link
- Supports the Anacostia Trails Heritage Area
- East Coast Greenway and American Discovery Trail
- Supports WB&A Trail
- Bowie Heritage Trail
- Revitalize BSU Area Nature Trails
- Bowie State University Activity Hub



ANNE ARUNDEL COUNTY
Department of Public Works

Prince George's County Department of Parks and Recreation

Project Process

Multi-phase design process

Current:

- **1a: Feasibility – Alternatives Assessment**
- 1b: Schematic Design – 30%

Future:

- 2: Design Development – 65%
- 3: Construction Documents – 95%
- 4: Bid Documents – 100%
- 5: Construction



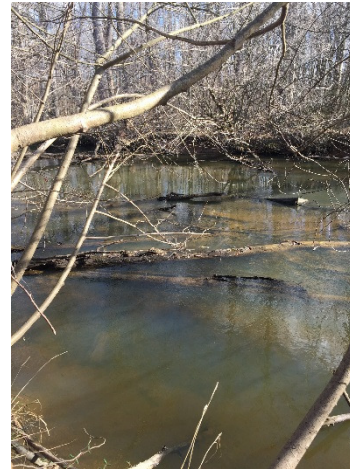
Feasibility – Alternatives Assessment

- Environmental Analysis
 - Field Assessments
 - National Environmental Policy Act (NEPA)
- Site Evaluation
 - Three Alternatives for Assessment
 - Comparison of Impacts
- Public Input
- Summary & Report with Recommendations



Environmental Analysis

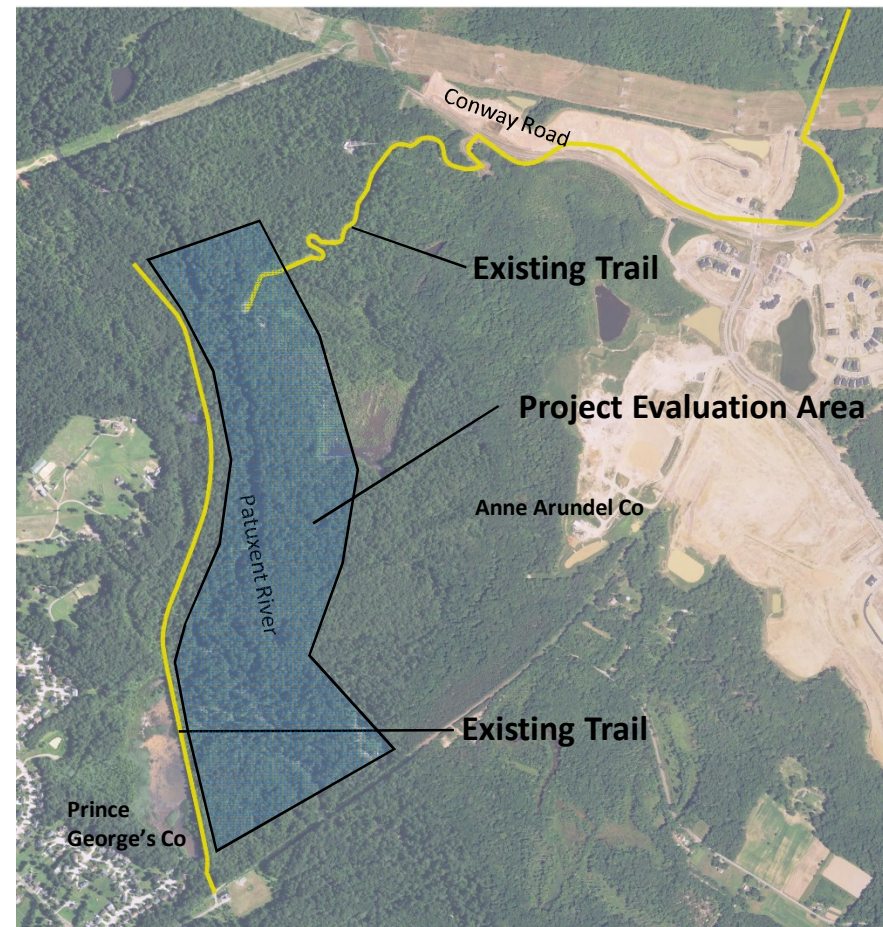
- Field Analysis
 - Site investigations conducted to establish crossing location alternatives for further consideration.
- NEPA Process
 - Review of potential environmental impacts
 - Floodplain, cultural, social, waterways, wetlands & floodplains, historic resources
 - Insure conformance with overlapping studies and programs
 - Review through SHA/FHWA



Site Evaluation

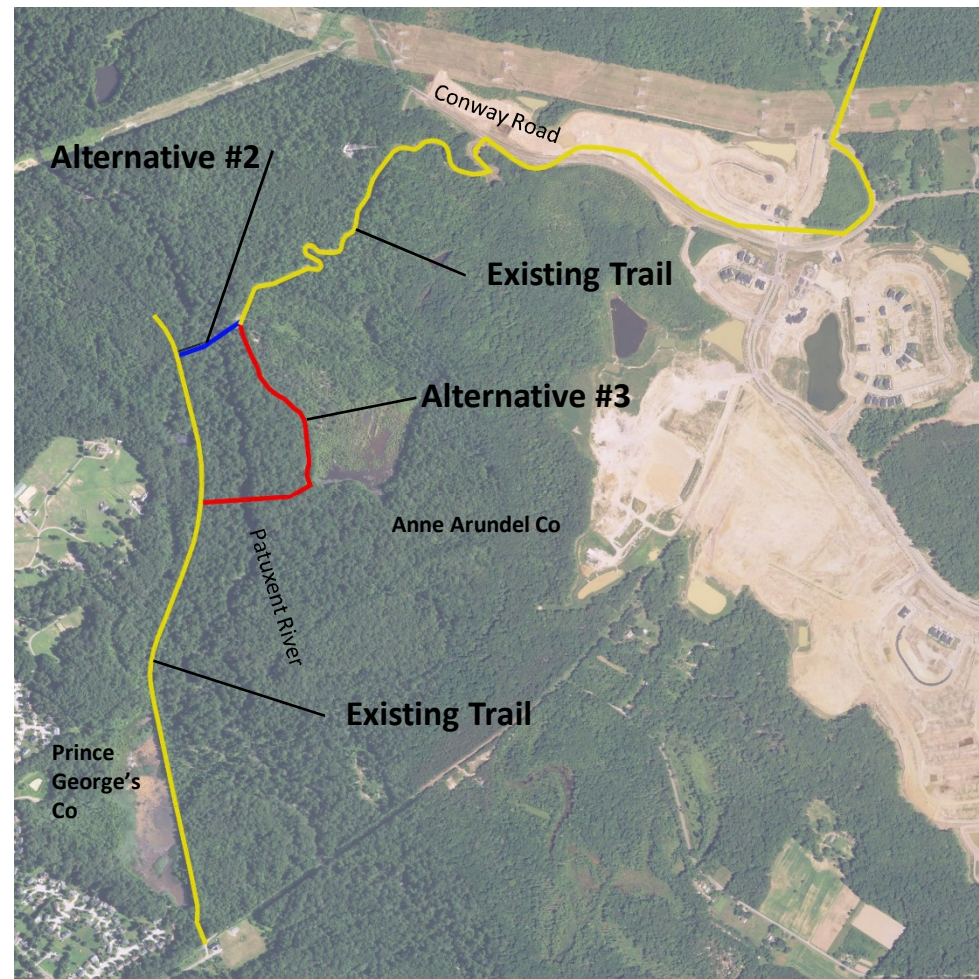
Three Alternatives for Assessment

- Feasibility and Preliminary Location Alignment
- Types of Impacts
 - Environmental Impacts (temporary & permanent)
 - Constructability Challenges
 - Construction Cost
 - Permitting / Regulatory Requirements
 - Easement Needs



Three Alternatives

- Alternative #1:
No-Build
- Alternative #2:
Northern
- Alternative #3:
Southern

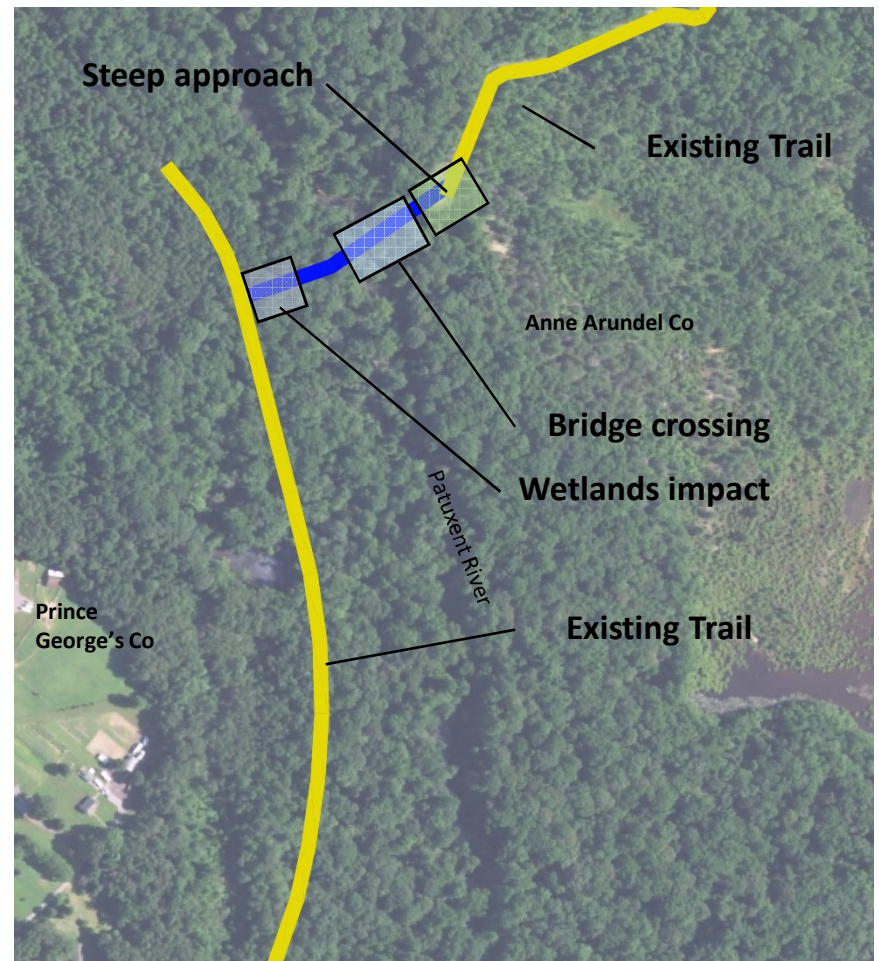


Alternative #1: No-Build

- Required alternative under NEPA documentation
- Pros
 - No impacts to environmental resources
- Cons
 - Does not achieve overall project goals of trail connection between the counties.

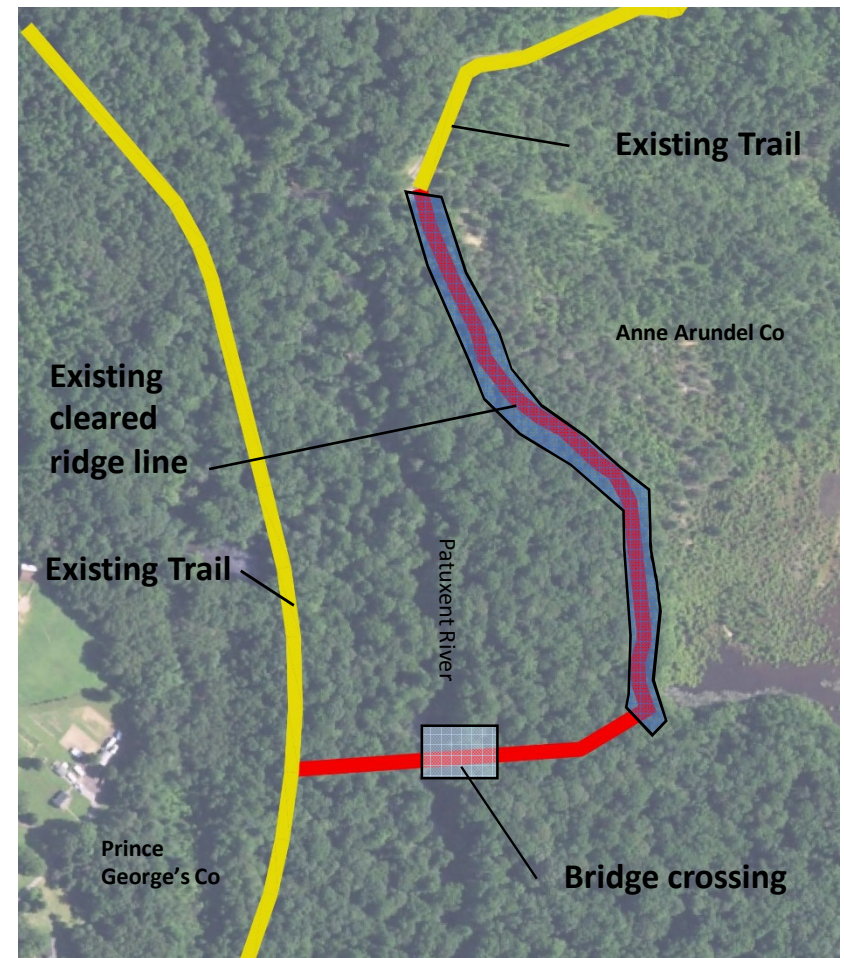
Alternative #2: Northern

- Preliminary Bridge Span
- Preliminary Trail Length
- Pros
 - Most direct route
 - Minimizes construction impact
 - Minimizes floodplain impact
 - Minimizes forest impact
 - Minimizes wetlands impact
- Cons
 - Steep approaches
 - Existing ponding areas



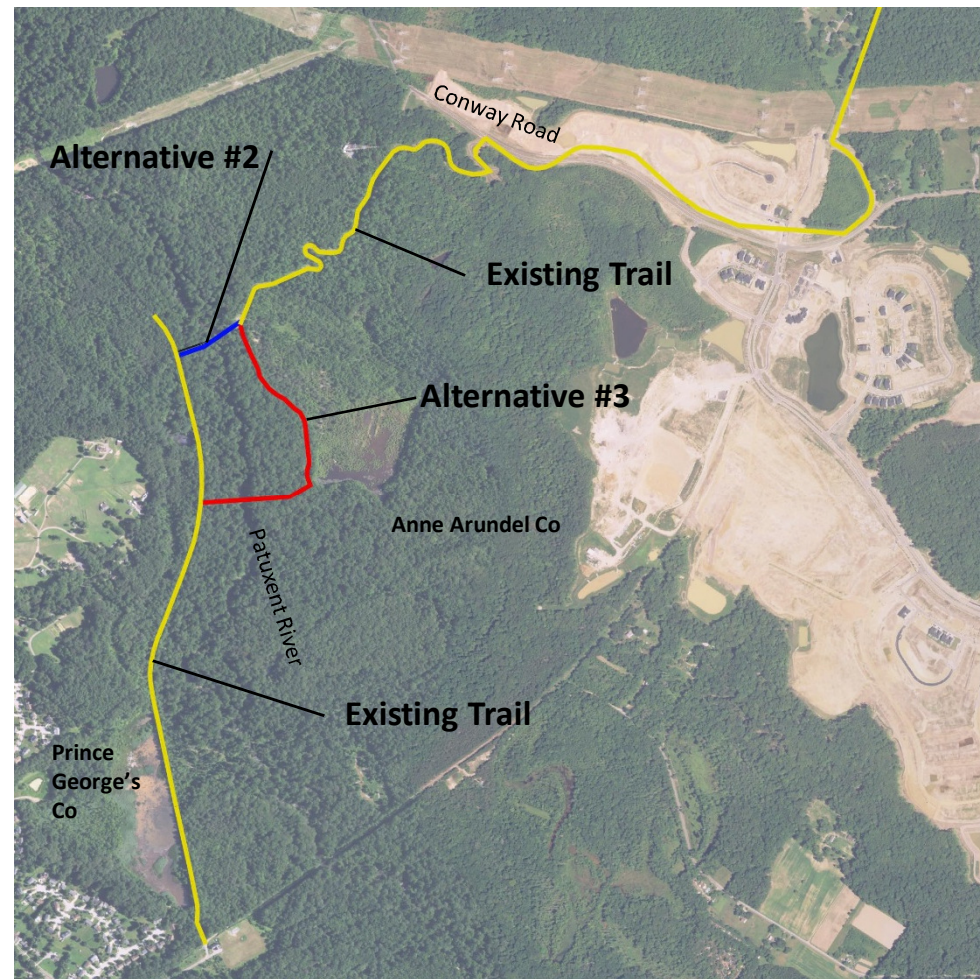
Alternative #3: Southern

- Preliminary Bridge Span
- Preliminary Trail Length
- Pros
 - Utilizes previously cleared area
 - Steep approach segments limited
- Cons
 - Longer new trail required
 - Greater floodplain impact
 - Greater forest clearing
 - More new impervious / SWM requirements
 - Easement required



Summary

- Alternative #1: No-Build
 - No trail connection
- Alternative #2: Northern
 - Minimizes environmental impacts
- Alternative #3: Southern
 - Approx 4x longer trail
 - Utilizes existing terrain & cleared area
 - Greater cumulative impacts



Next Steps

- Finalize the Phase 1a: Feasibility – Alternatives Assessment
 - Assemble & evaluate comments from tonight's meeting
 - Prepare interim draft report for review
 - Final Report & supporting documents
- Anne Arundel County & Prince George's County Review
- Begin Phase 1b: Schematic Design – 30%
 - Detailed design based upon selected alternative

Questions / Comments

Deadline for Comments = April 17, 2017

Website:

<http://www.aacounty.org/news-and-events/events/event/03/28/2017/proposed-bridge-over-the-patuxent-river-public-meeting>

Comment Card (at tonight's meeting)