



— Making a difference, together —

Carrs Wharf Access Road Improvements Public Meeting

Project No. P573300
Contract No. P573302

Presented by:
Anne Arundel County Department of Public Works
With the Department of Recreation and Parks
August 17, 2023



DPWandYOU.com | *Making a difference, together*



Meeting Information

This will be an in-person meeting and will be audio recorded. The link for the meeting recording will be posted on the OPZ website within 24 hours of the meeting.

For questions and comments:

- Please hold all questions until the end of the presentation
- Meeting Minutes will be shared with the Public. The Meeting Minutes will be: Posted on the DRP website; Posted on the OPZ Community Meetings website; and Mailed to the residents that received the mailed notice of this meeting

Additional questions, up to 14 days beyond tonight's meeting, may be submitted through the Office of Planning and Zoning website:

<https://www.aacounty.org/departments/planning-and-zoning/development/community-meetings/past-meetings-comments/>



Introductions

- Department of Public Works
 - Emma Pfefferkorn (Project Manager) pwvpfe00@aacounty.org
 - David Moncrief (Presenting Project Manager)
- Department of Recreation and Parks
 - Erica Matthews (Deputy Director)
- BayLand Consultants & Designers, Inc.
 - Megan Barniea, PE (Project Manager)



Community Meeting per Code § 17-2-107

- Project Type: County Capital Improvement Project
- Address: 1001 Carrs Wharf Road
- Property Owner: Anne Arundel County
- Existing and Proposed Use: Public Water Access Park
- Grading Permit Number: TBD
- Zoning: Exempt
- Water & Sewer Type: None
- Impacted Schools: None
- Number of Proposed Lots: None
- Type of Proposed Product: Access Road Improvement Project
- Approximate Road Configuration: Access road is from the intersection of Carrs Wharf Road and Cadle Creek Road
- Limits of Disturbance: 0.9 Acres
- Environmental Features On-Site: Non-Tidal Wetland, Non-tidal Wetland Buffer and Steep Slopes
- Modifications Anticipated: Non-Tidal Wetland and Non-Tidal Wetland Buffer and Steep Slopes (17-6-401 & 17-6-403)
- Critical Area Designation: Limited Development Area (LDA), Resource Conservation Area (RCA) and 100' Buffer
- Impacts of Proposed Development on Environmental Features: Critical Area, Non-Tidal Wetland
- Conceptual Stormwater Management:
 - Site development will address stormwater management requirements with a submerged gravel wetland



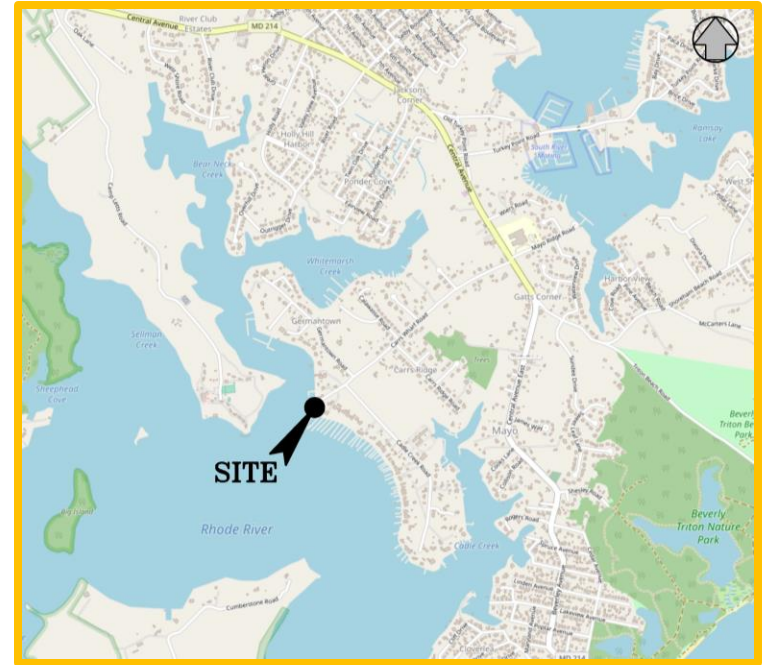
Agenda

- Carrs Wharf Improvement Project
 - Background
 - Existing Conditions
 - Proposed Design
 - Schedule
 - Contact information
- Q&A on Proposed Improvements



Project Background

- Location – Rhode River and Carrs Wharf Road
- Existing soft launch and pier
- The site does not provide ADA accessibility or emergency vehicle access.



Carrs Wharf Existing Conditions – Access Road

- Approximately 645 LF of 13' wide access road to the shore
- Not accessible to emergency vehicles
- Difficult for vehicles to pass with park visitors or adjacent residents entering the access road
- Vegetated shoulder/slope adjacent to the existing access road



Carrs Wharf Existing Conditions – Park Amenities

- Approximately 10 parking spaces
 - No ADA Accessible parking
- Natural sand launch
- 300 LF pier reconstructed in 2020



Carrs Wharf Access Road Improvement Design Goals

- Widen access road
- Provide emergency vehicle turnaround
- Provide 1 ADA parking space and accessibility to pier
- Improve parking functionality and maintain existing spaces
- Environmental Resource Protection & Mitigation



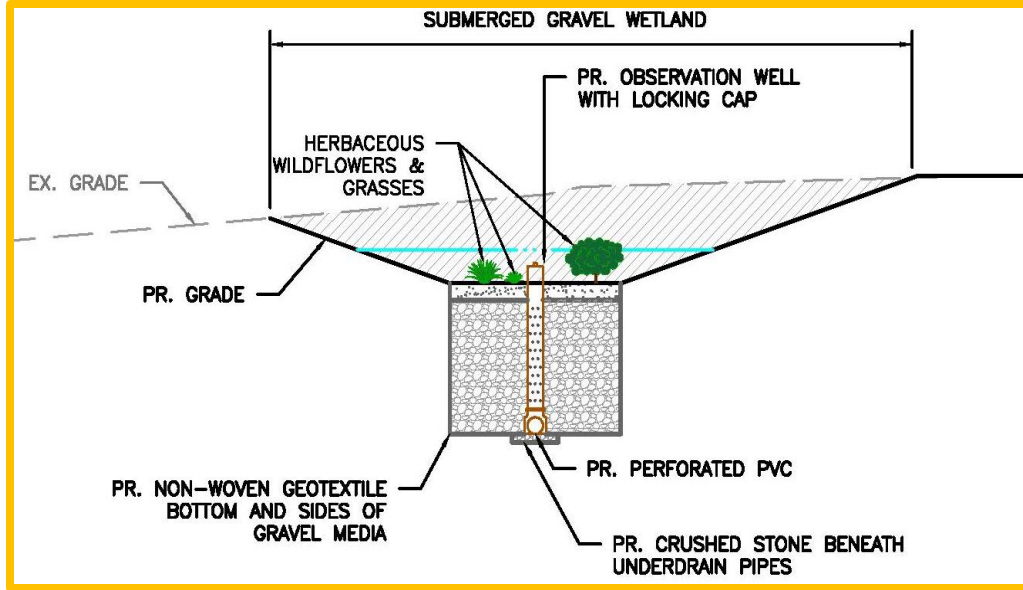
Proposed Design – Access Road



Proposed Design – Turnaround & ADA Parking/Pier Access



Proposed Design - Stormwater Management



Submerged Gravel Wetland Typical Section



Shortly after planting

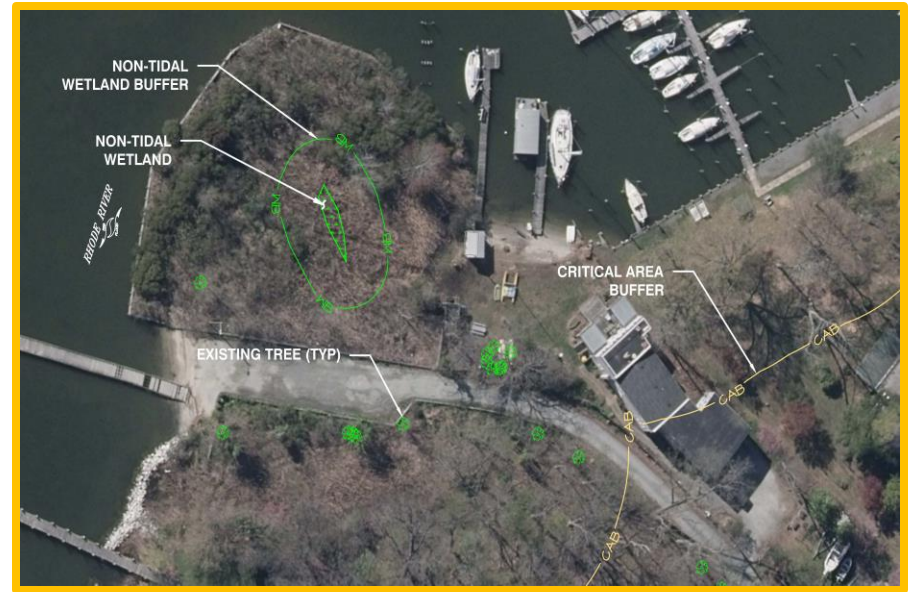


After one growing season



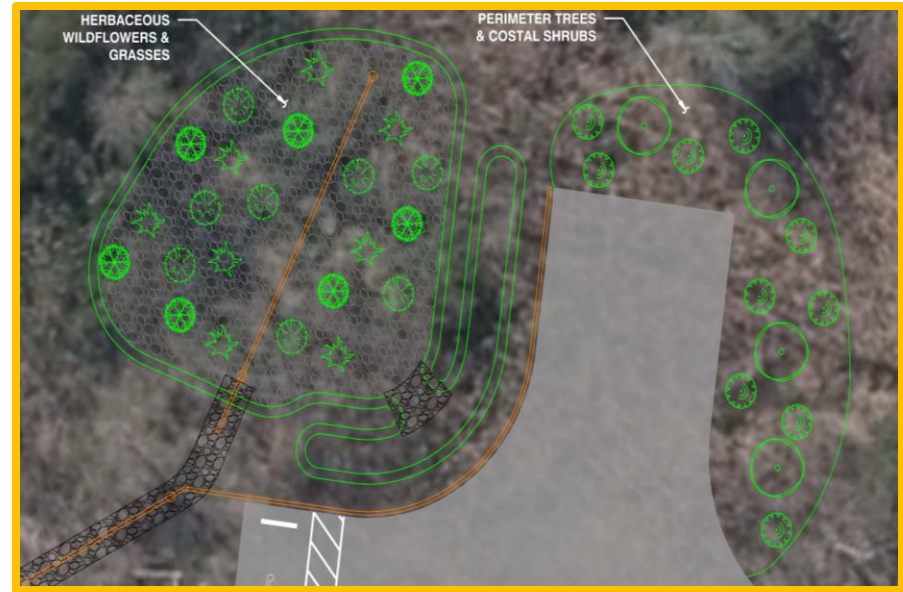
Environmental Resources and Protection

- Resource Inventory
 - Identified trees, non-tidal wetlands and their buffers
 - Delineated Critical Area expanded buffer
 - Coordinated with Maryland Historical Trust, US Fish and Wildlife Service, and Department of Natural Resources for other resources (i.e. historical, archeological, rare, threatened, endangered species or habitat, etc.)
 - Pre-application meetings held with MDE and OPZ Critical Area Team



Environmental Resources and Protection

- Proposed improvements designed to minimize impacts
- Unavoidable impacts will be mitigated
 - Non-Tidal Wetland & Buffer Mitigation
 - Critical Area Mitigation for Lot Coverage & Canopy Loss
 - Replanting with native species to the maximum extent practicable within the project limits
 - Replanting in a county forest bank
 - Fee-In-Lieu



Carrs Wharf Access Road Improvement Design Goals

- Widen access road ✓
- Provide emergency vehicle access ✓
- Provide ADA parking and accessibility to pier ✓
- Improve parking functionality and maintain existing spaces ✓
- Environmental Resource Protection & Mitigation ✓



Schedule for Access Road Improvement Project

- Schematic Design (30%) – Summer 2023 ← We are here
- Federal & State Permitting – Fall 2023/Winter 2024
- Design Development (60%) – Fall 2023/Winter 2024
- County Permitting & Construction Documents – Spring/Summer 2024
- Construction – Fall 2024



Questions?

Follow Up:

For up to 2 weeks after tonight's meeting, questions and comments may be submitted through the Office of Planning and Zoning website:

<https://www.aacounty.org/departments/planning-and-zoning/development/community-meetings/past-meetings-comments/>

- All responses will be provided by the project team and posted on the County's Community Meeting Calendar Webpage and the Dept. of Recreation and Parks Capital Projects website
- Responses will also be mailed to all parties that were sent the meeting invite
- Call 410-222-7317 for questions regarding park maintenance

Thank you!





Bureau of Utility Operations

24-Hour Emergency

Water Service: (410) 222-8400

Billing Inquiries: (410) 222-1144



Bureau of Waste Management Services

Bulk Trash Service / Curbside

Collections: (410) 222-6100



Bureau of Highways

General Inquiries: (410) 222-7321

Snow Line: (410) 222-4040

Email: hwyscustomercare@aacounty.org



Bureau of Engineering

General Inquiries: (410) 222-7500



Bureau of Watershed Protection and Restoration

General Inquiries: (410) 222-1072

Customer Relations:
(410) 222-7582

