

SECTION VI
PAVING

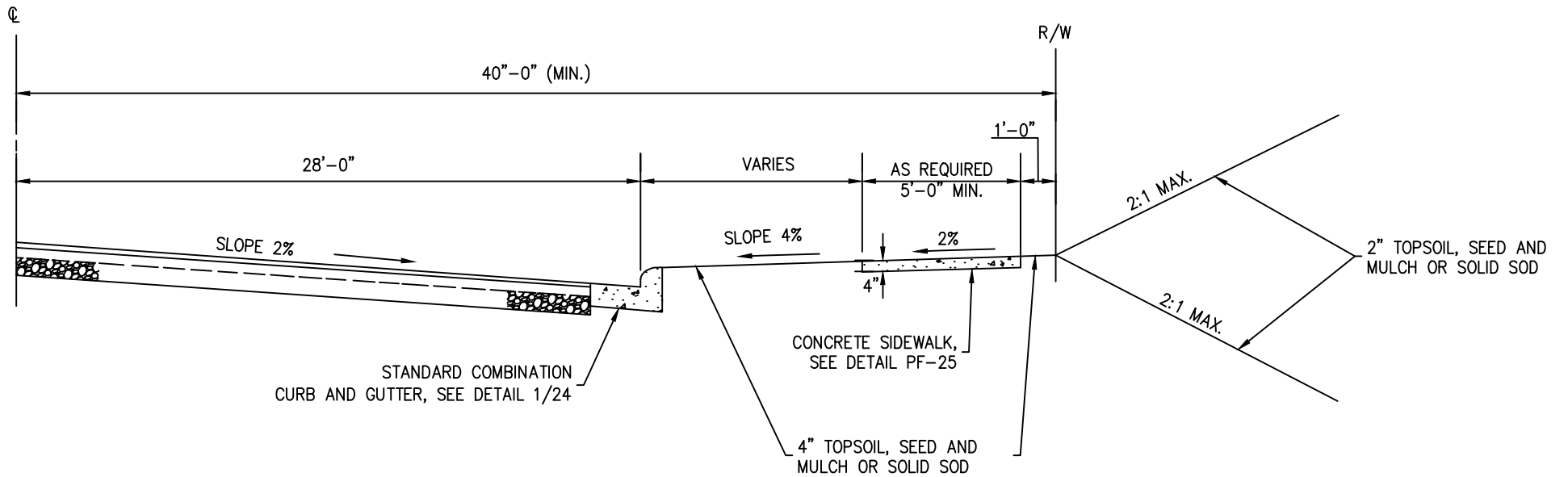
TABLE OF CONTENTS

PAVING DETAILS

<u>No.</u>	<u>Title</u>
P-1	Principal Arterials
P-2	Collectors
P-3	Local Street & Cul-de-Sac
P-4	“T” Turnaround (Two parts)
P-5	Cul-de-Sac (Two parts)
P-6	Stopping Lane for Public Transportation Vehicles
P-7	Stopping Lane for Public Transportation Vehicles – Section “A-A”
P-8	Types of Joints for Concrete Pavements
P-9	Paver Blocks (Non-Traffic Bearing)
P-10	Paving Surfaces Guideline

NOTES:

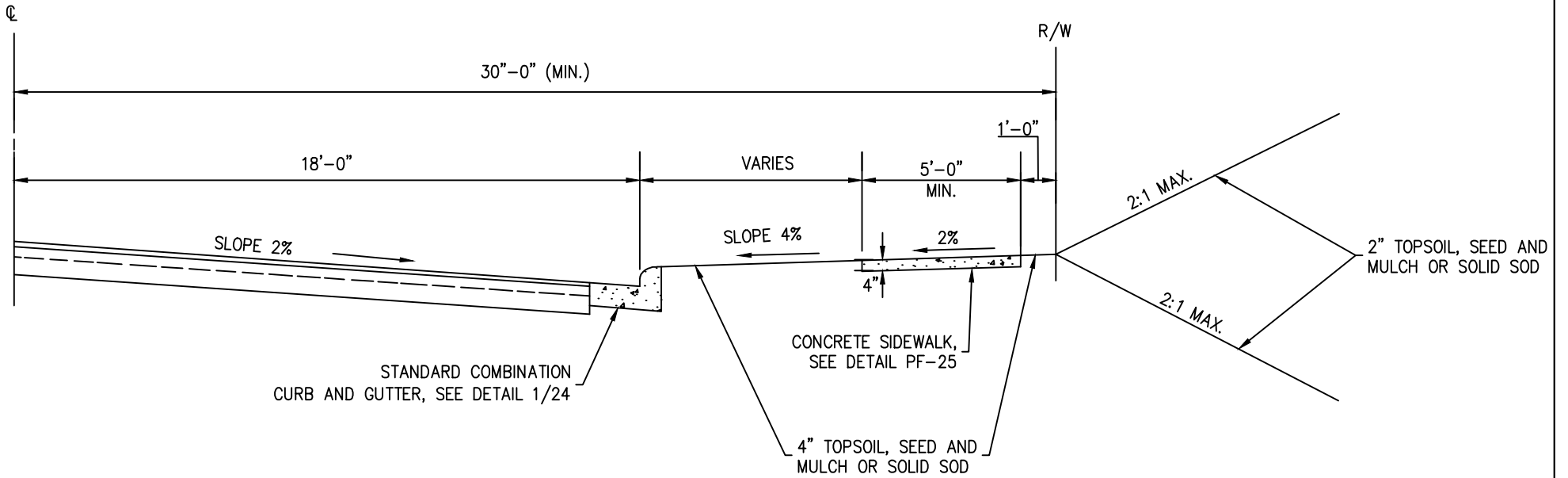
1. BITUMINOUS CONCRETE AND HOT MIX ASPHALT(HMA) HAVE THE SAME MEANING IN THESE STANDARD DETAILS AND THE STANDARD SPECIFICATIONS.
2. BITUMINOUS CONCRETE BAND DESIGNATIONS ARE MD. STATE HIGHWAY ADMINISTRATION.
3. BITUMINOUS CONCRETE & DENSE GRADED AGGREGATE SHALL BE MIXED AND PLACED IN ACCORDANCE WITH LATEST SPECIFICATIONS.
4. A TACK COAT OF 0.05 GAL/SQ.YD. OF AE-4 SHALL BE APPLIED TO EACH UNDERLYING LAYER OF BITUMINOUS CONCRETE PRIOR TO PLACING SUBSEQUENT COURSES.
5. A PRIME COAT OF 0.3 GAL/SQ.YD. OF MC-70 SHALL BE APPLIED ON THE TOP OF ALL GRANULAR BASE COURSES.
6. SEE STD CROSS SECTION REQUIREMENTS FOR LANE WIDTHS, RIGHT-OF-WAY NEEDS AND SIDEWALK DIMENSIONS.
7. FOR PAVEMENT THICKNESS, SEE PAVEMENT SURFACES GUIDELINES IN DETAIL P-10.



ANNE ARUNDEL COUNTY DEPARTMENT OF PUBLIC WORKS	APPROVED _____ CHIEF ENGINEER	STANDARD PAVING DETAILS PRINCIPAL ARTERIAL	REVISED 04/2024	$\frac{P}{1}$
	_____ DESIGN ENGINEER			
	DATE: _____			

NOTES:

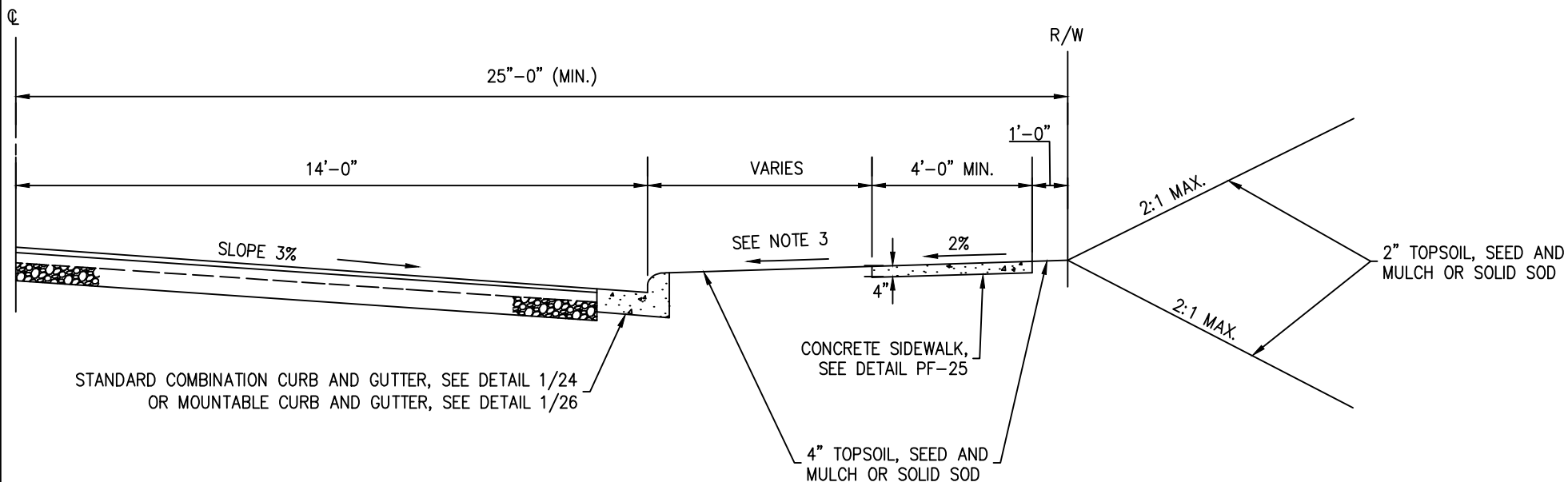
1. SEE NOTES ON DETAIL P-1.
2. FOR PAVEMENT THICKNESS, SEE PAVEMENT SURFACES GUIDELINES IN DETAIL P-10.



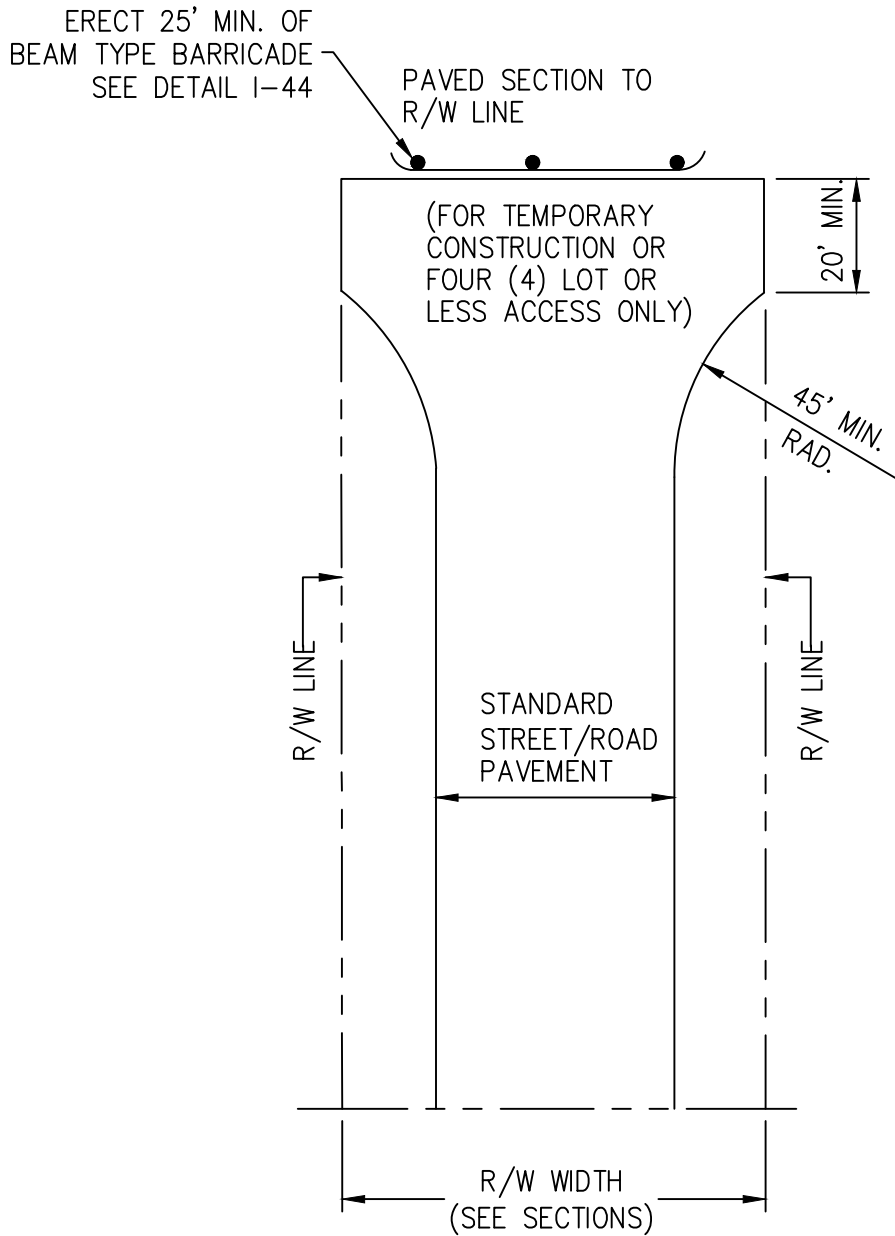
ANNE ARUNDEL COUNTY DEPARTMENT OF PUBLIC WORKS	APPROVED _____ CHIEF ENGINEER	STANDARD PAVING DETAILS COLLECTOR	REVISED 04/2024	$\frac{P}{2}$
	_____ DESIGN ENGINEER			
	DATE:			

NOTES:

1. SEE NOTES ON DETAIL P-1.
2. MAXIMUM LENGTH 600'
3. SLOPE VARIES:
 - 3.1. 4% FOR STANDARD CURB AND GUTTER.
 - 3.2. 6% FOR MOUNTABLE CURB AND GUTTER.
4. FOR PAVEMENT THICKNESS, SEE PAVEMENT SURFACES GUIDELINES IN DETAIL P-10.



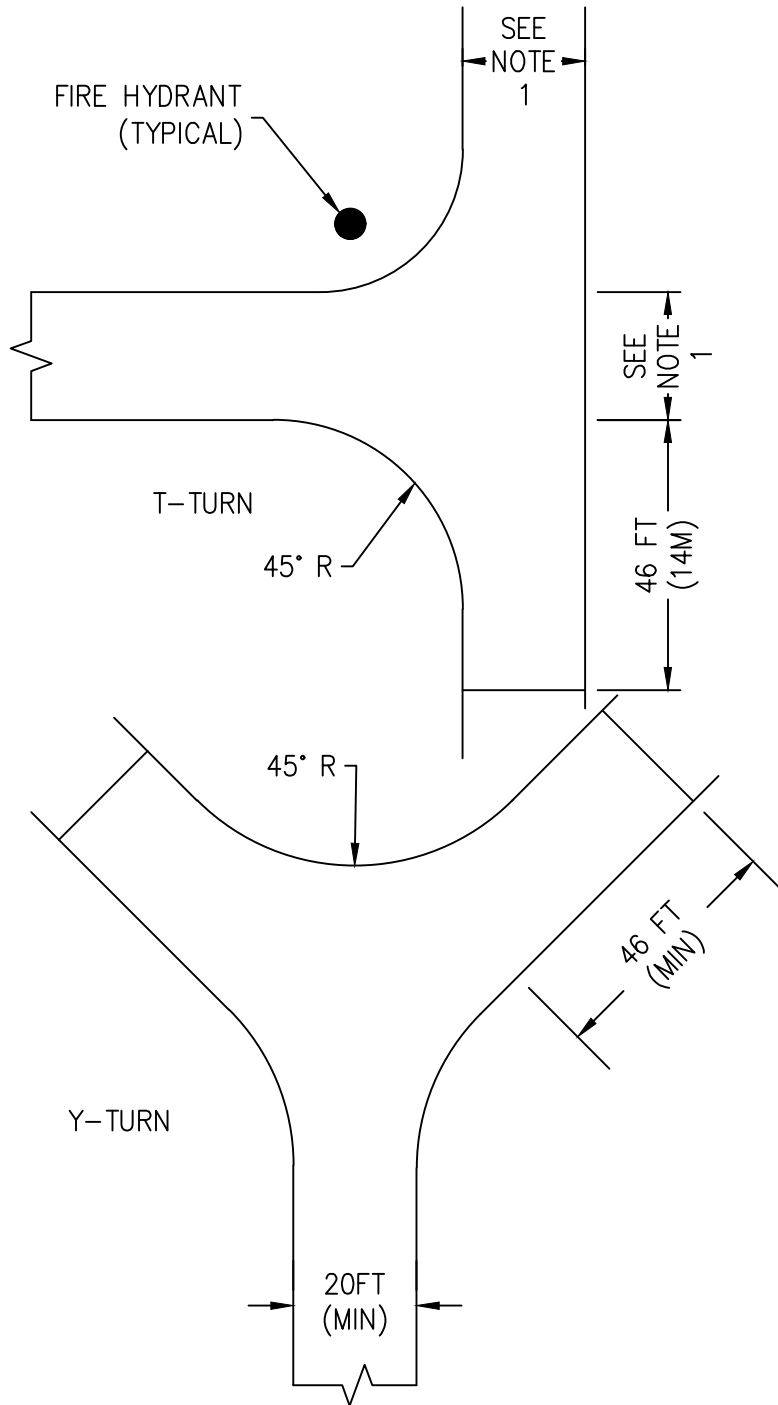
ANNE ARUNDEL COUNTY DEPARTMENT OF PUBLIC WORKS	APPROVED _____ CHIEF ENGINEER	STANDARD PAVING DETAILS LOCAL STREET & CUL DE SAC	REVISED 04/2024	$\frac{P}{3}$
	_____ DESIGN ENGINEER		_____	
	DATE:		_____	
	_____		_____	



NOTES:

1. NO DRIVEWAY TO BE CONSTRUCTED OFF HAMMERHEAD OF 'T' TURNAROUND.
2. NO PARKING WILL BE ALLOWED WITHIN TURNAROUND.
3. EACH LEG OF TURNAROUND SHALL BE REQUIRED TO MEET ALL THE SAME REQUIREMENTS OF THE LOCAL STREETS IN THE COMMUNITY (INCLUDING SIDEWALK) EXCEPT THE PAVEMENT WIDTH IS PERMITTED TO NECK DOWN TO 20' MINIMUM.
4. ANY SPECIFIC SIDEWALK OR CURB RAMP REQUIREMENTS NOT COVERED ABOVE NEED TO BE CONSIDERED OR ADDED.
5. LOCATION OF BEAM BARRICADE SHOULD CONSIDER SAFETY AND WINTER OPERATIONS.
6. SEE STORMWATER MANAGEMENT PRACTICES AND PROCEDURES MANUAL (DETAIL F1)
7. A MODIFICATION WILL BE REQUIRED IF THESE REQUIREMENTS CANNOT BE MET OR THE REQUIREMENTS OF DETAIL P-4B CANNOT BE MET.

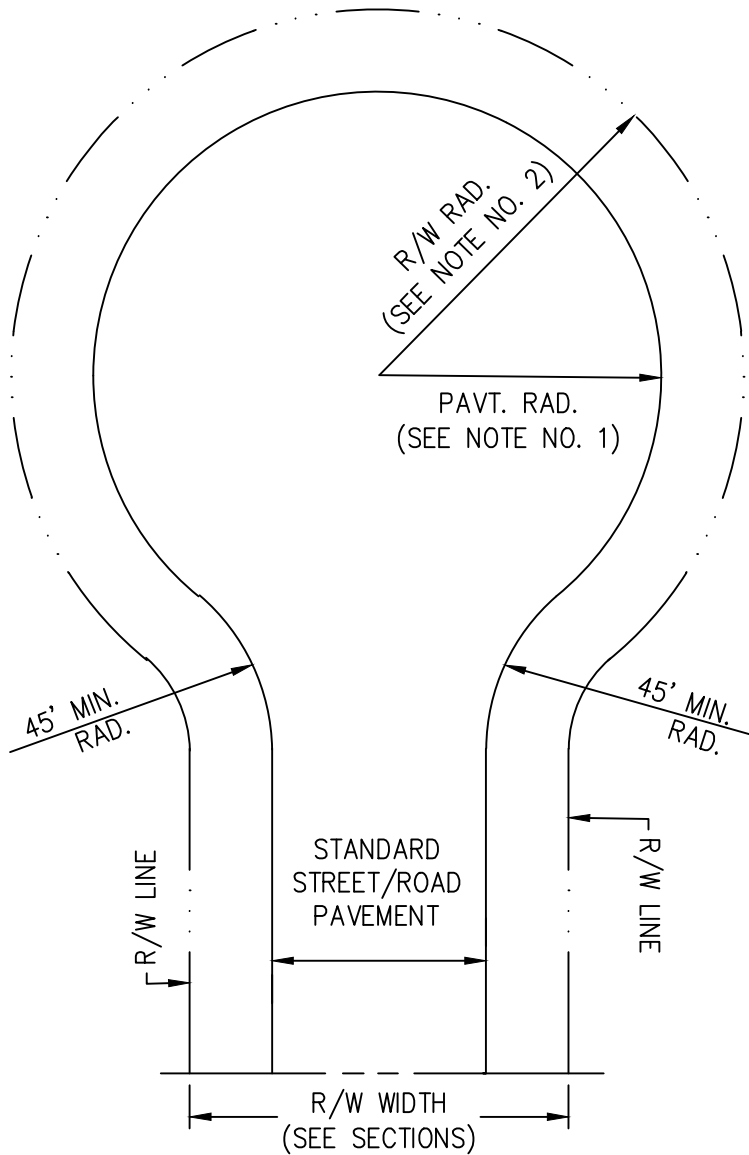
ANNE ARUNDEL COUNTY DEPARTMENT OF PUBLIC WORKS	APPROVED <hr/> CHIEF ENGINEER <hr/> DESIGN ENGINEER DATE:	STANDARD PAVING DETAILS "T" TURNAROUND	REVISED 04/2024 <hr/> <hr/> <hr/>	P <hr/> 4A



NOTE:

1. 20FT STORM DRAIN EASEMENT (TYPICAL).
2. THE T-TURN AND Y TURN ARRANGEMENTS SHOWN HERE ARE EXAMPLES OF ACCEPTABLE TURNAROUNDS.
3. L ARRANGEMENT ALSO ACCEPTABLE WITH SAME CRITERIA/DIMENSIONS.

ANNE ARUNDEL COUNTY DEPARTMENT OF PUBLIC WORKS	APPROVED <hr/> CHIEF ENGINEER <hr/> DESIGN ENGINEER DATE:	STANDARD PAVING DETAILS "T" & "Y" TURNAROUND	REVISED 04/2024	P <hr/> 4B



NOTES:

1. PAVEMENT RADIUS:
 - 1.1. 45' FOR INDIVIDUAL HOUSES.
 - 1.2. 45' FOR APARTMENTS & TOWNHOUSES, COMMERCIAL & INDUSTRIAL DEVELOPMENTS.
2. RIGHT-OF-WAY RADIUS:
 - 2.1. 55' FOR LOCAL STREET & CUL-DE-SAC STREET (URBAN).
 - 2.2. 55' FOR APARTMENTS & TOWNHOUSES. COMMERCIAL & INDUSTRIAL DEVELOPMENTS.
 - 2.3. 58' FOR LOCAL ROAD AND CUL-DE-SAC ROAD (RURAL).
 - 2.4. RIGHT-OF-WAY IS TO MAINTAIN THE TYPICAL SECTION AND TO BE CONCENTRIC TO THE EDGE OF PAVEMENT OR CURBLINE.
3. NO STREET LIGHT ARE TO BE PLACES IN THE CUL-DE-SAC (BEYOND THE PC OF THE CUL-DE-SAC ENTRANCE).

ANNE ARUNDEL
COUNTY
DEPARTMENT OF
PUBLIC WORKS

APPROVED

CHIEF ENGINEER

DESIGN ENGINEER

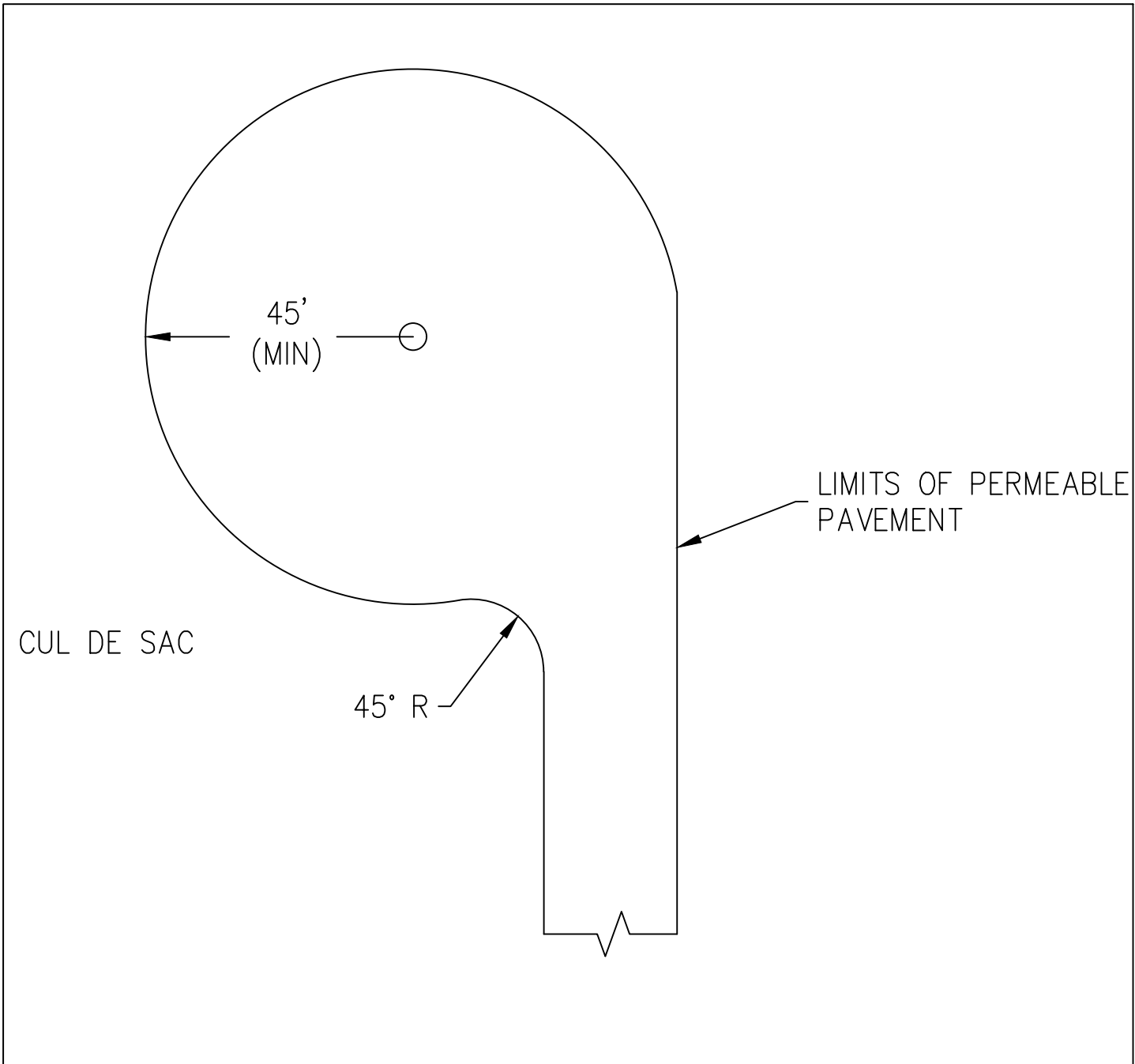
DATE:

STANDARD PAVING DETAILS

CUL-DE-SAC

REVISED
04/2024

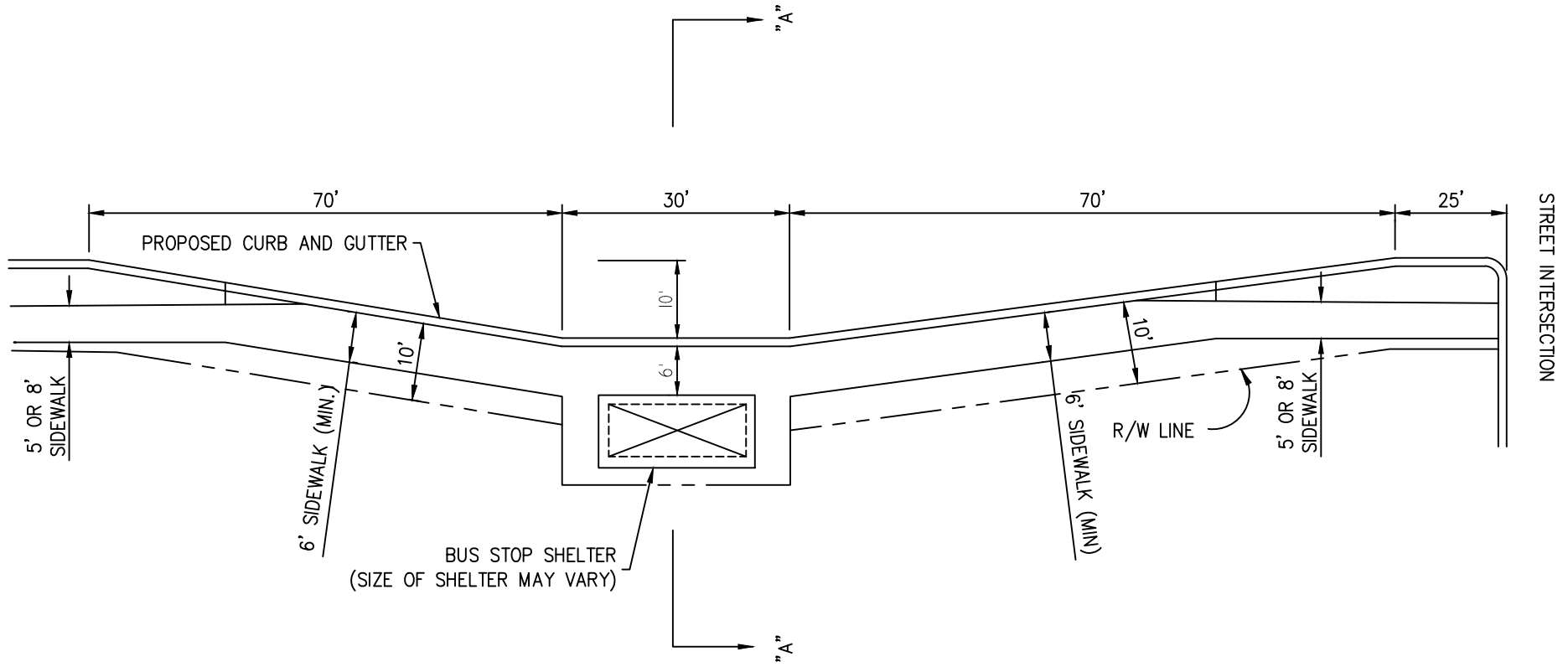
P
5A



NOTES:

1. MINIMUM OUTSIDE TURNING RADIUS IS 45 FEET.
2. OTHER REQUIREMENTS FOR MATERIAL, MARKINGS. SIGNAGE, ETC. APPLY.

ANNE ARUNDEL COUNTY DEPARTMENT OF PUBLIC WORKS	APPROVED	STANDARD PAVING DETAILS SOLID CORE CUL DE SAC	REVISED	$\frac{P}{5B}$
	_____ CHIEF ENGINEER		04/2024	
	_____ DESIGN ENGINEER			
	DATE: _____			



ANNE ARUNDEL
 COUNTY
 DEPARTMENT OF
 PUBLIC WORKS

APPROVED

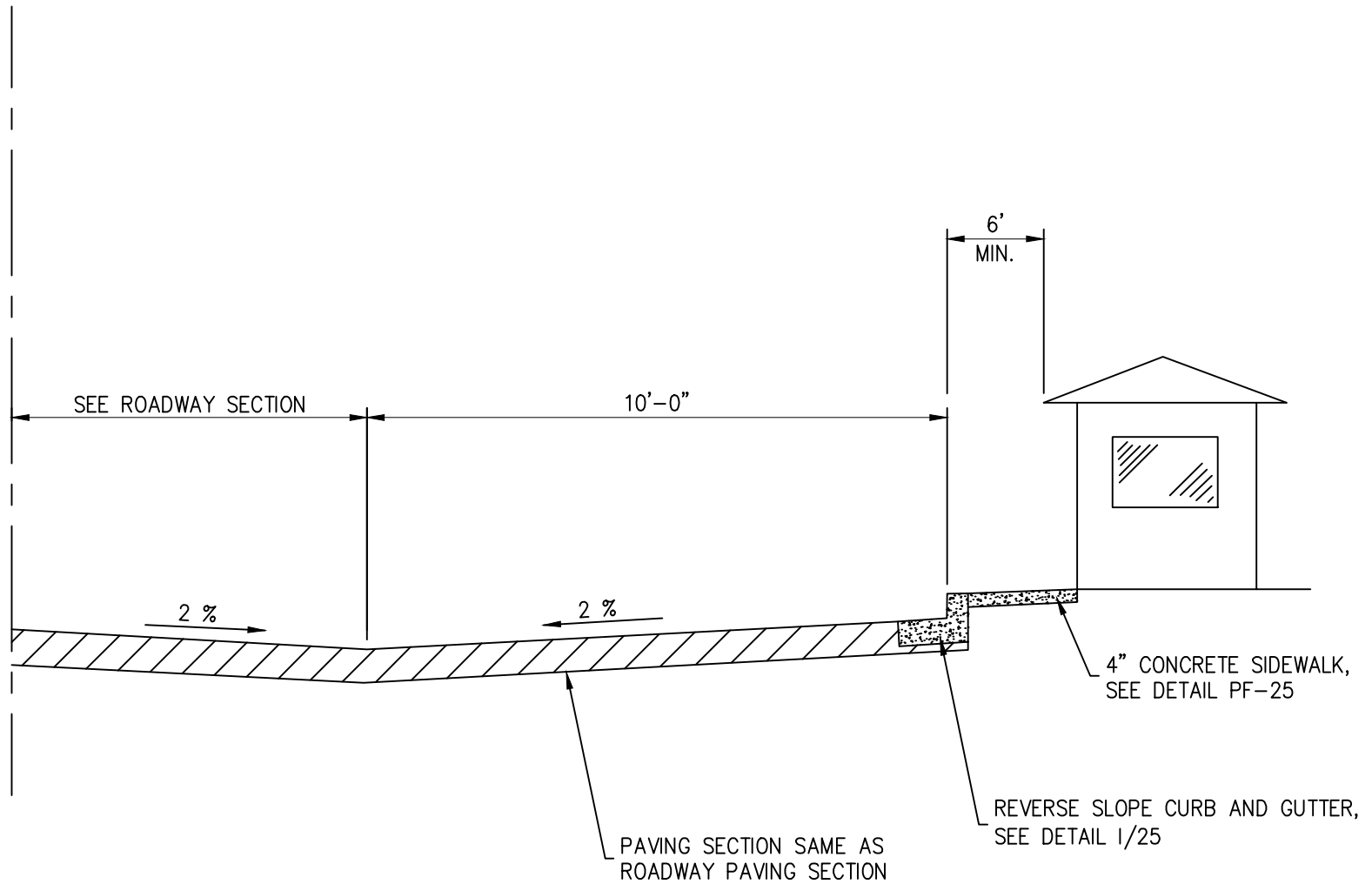
 CHIEF ENGINEER

 DESIGN ENGINEER

DATE:

STANDARD PAVING DETAILS
 STOPPING LANE FOR PUBLIC
 TRANSPORTATION VEHICLES

REVISED
 04/2024



ANNE ARUNDEL
 COUNTY
 DEPARTMENT OF
 PUBLIC WORKS

APPROVED

 CHIEF ENGINEER

 DESIGN ENGINEER

DATE:

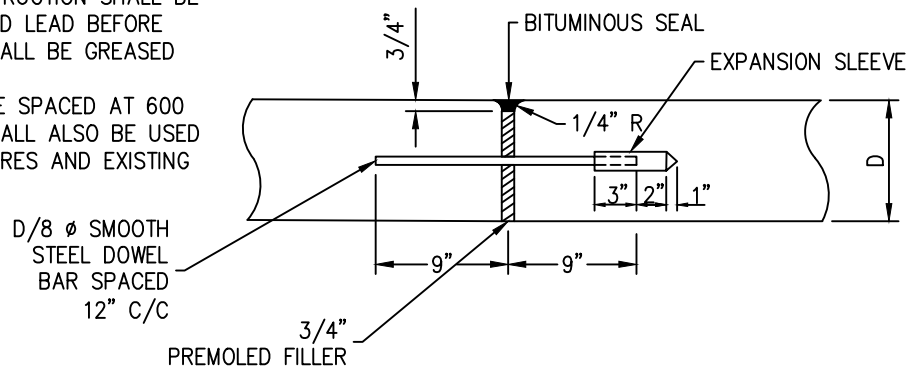
STANDARD PAVING DETAILS
 STOPPING LANE FOR
 PUBLIC TRANSPORTATION
 VEHICLES – SECTION "A-A"

REVISED
 04/2024

P
 7

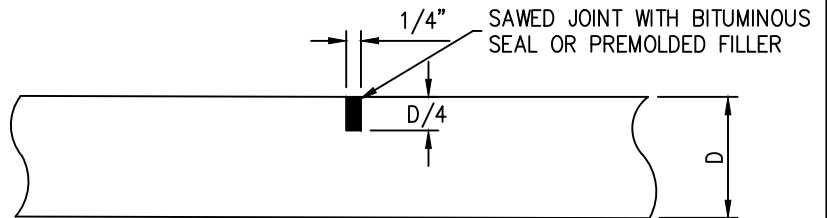
NOTES:

1. SMOOTH DOWELS FOR CONSTRUCTION SHALL BE PAINTED WITH APPROVED RED LEAD BEFORE DELIVERY AND FREE END SHALL BE GREASED BEFORE INSTALLATION.
2. EXPANSION JOINTS SHALL BE SPACED AT 600 FOOT INTERVALS AND SHALL ALSO BE USED AT INTERSECTIONS, STRUCTURES AND EXISTING PAVEMENT AS REQUIRED.



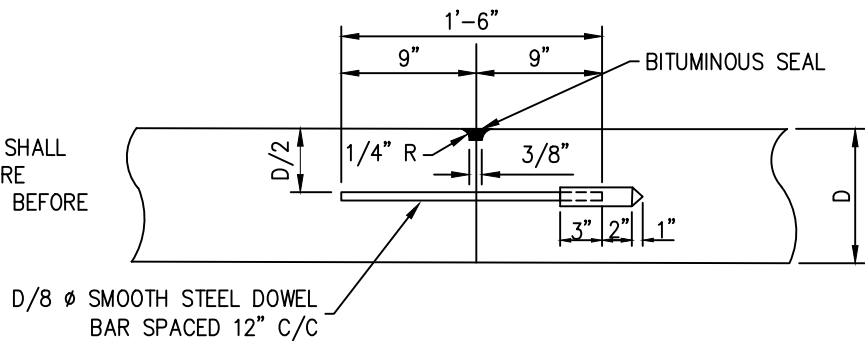
EXPANSION JOINT

NOTE:
CONTRACTION JOINTS SHALL BE SPACED AT 20' INTERVALS.



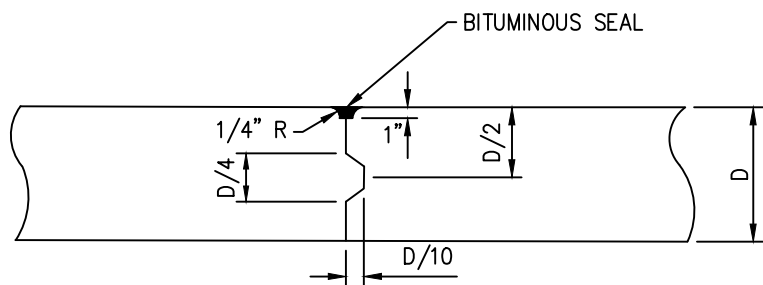
CONTRACTION JOINT

NOTE:
SMOOTH DOWELS FOR CONSTRUCTION JOINTS SHALL BE PAINTED WITH APPROVED RED LEAD BEFORE DELIVERY AND FREE END SHALL BE GREASED BEFORE INSTALLATIONS.



TRANSVERSE CONSTRUCTION JOINT

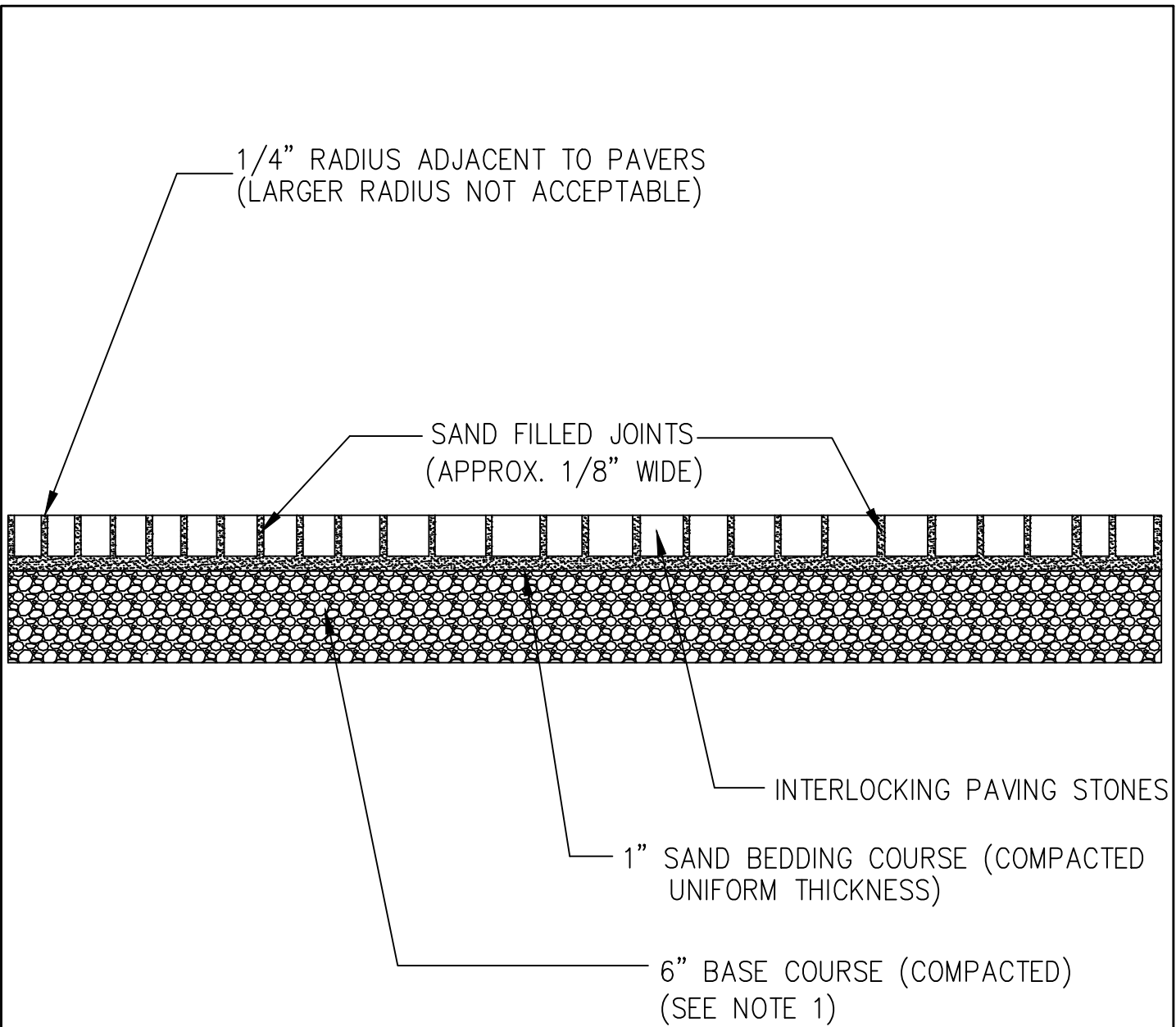
NOTE:
WHEN AJACENT LANES ARE POURED SIMULTANEOUSLY, THE LONGITUDINAL JOINT MAY BE SAWED OR FORMED BY JOINT INSERT.



LONGITUDINAL CONSTRUCTION JOINT

(PAVEMENT POURED IN SINGLE LANES)
(NOT TO SCALE)

ANNE ARUNDEL COUNTY DEPARTMENT OF PUBLIC WORKS	APPROVED _____ CHIEF ENGINEER	STANDARD PAVING DETAILS TYPES OF JOINTS FOR CONCRETE PAVEMENTS	REVISED 04/2024	P 8
	_____ DESIGN ENGINEER		_____	
	DATE:		_____	
	_____		_____	
	_____		_____	



NOTE:

1. BASE DESIGN TO BE CERTIFIED BY A QUALIFIED GEOTECHNICAL ENGINEER TO MEET EXISTING SITE (SOIL) CONDITIONS.
2. ONLY TO BE USED IN NON-TRAFFIC AREAS AND NON-PEDESTRIAN AREAS.

ANNE ARUNDEL COUNTY DEPARTMENT OF PUBLIC WORKS	APPROVED <hr/> CHIEF ENGINEER <hr/> DESIGN ENGINEER DATE:	STANDARD PAVING DETAILS PAVER BLOCKS (NON-TRAFFIC BEARING)	REVISED 04/2024	P <hr/> 9

PAVING SURFACE THICKNESS GUIDELINES			
TYPE OF ROADWAY	ARTERIAL	COLLECTOR	LOCAL STREET
	CONCRETE	9"	8"
	PCC	PCC	PCC
ASPHALT	1.5"	1.5"	1.5"
	SC	SF	SF
	9.5"	7.5"	6.5"
	BF	BF	BF
OR			
ASPHALT & SUBBASE	1.5"	1.5"	1.5"
	SC	SF	SF
	5.5"	5"	3"
	BF	BF	BF
	8"	8"	8"
	GAB	GAB	GAB

CONCRETE SURFACES TO BE PLAIN PORTLAND CEMENT CONCRETE MIX NO. 7

SC – HOT MIX ASPHALT SURFACE COURSE (SC)

SF – HOT MIX ASPHALT SURFACE COURSE (SF)

BF – HOT MIX ASPHALT BASE COURSE (3 COURSES IF OVER 8"; 2 COURSES IF OVER 3")

GAB – DENSE GRADED AGGREGATE BASE COURSE (PLACED IN TWO COURSES)

NOTE: TO BE SUBJECT OF APPROVAL THROUGH DPW ON PER PROJECT BASIS

NOTE: PAVEMENT SECTION LIFT THICKNESS SHALL CONFORM TO THE SPECIFIED VALUES WHEN IT HAS BEEN PROVEN THROUGH SOIL BORING TESTS THAT EXISTING SUB GRADE SOIL IS CALIFORNIA BEARING RATIO (CBR) OF 5 OR GREATER. THE PAVEMENT STRUCTURES FOR THESE TYPICAL SECTIONS REQUIRE A MINIMUM SUBGRADE CBR OF 5. THE DESIGN PROFESSIONAL SHALL PERFORM SOIL BORINGS AS DESCRIBED IN GENERAL INSTRUCTIONS, CHAPTER 1 OF THE DESIGN MANUAL OR PERFORM LABORATORY CBR TESTS (AASHTO T193) TO DETERMINE IF THE ROADWAY SUB BASE MATERIAL WILL SATISFY A MINIMUM CBR OF 5. IF THE SOILS ON THE PROJECT SITE DO NOT SATISFY THE MINIMUM CBR VALUE, THE DESIGN PROFESSIONAL SHALL CREATE A DESIGN THAT CORRECTS THE DEFICIENT SUB BASE CONDITIONS.

ANNE ARUNDEL COUNTY DEPARTMENT OF PUBLIC WORKS	APPROVED	STANDARD PAVING DETAILS PAVING SURFACES GUIDELINE	REVISED	P 10
	_____		04/2024	
	CHIEF ENGINEER		_____	
	_____		_____	
	DESIGN ENGINEER			
	DATE:			