



Anne Arundel County Partnership
for Children, Youth & Families

Community Plan

FY 2024-2026



About Our Community Plan

ACKNOWLEDGMENTS

We would like to thank the following partners for their input in helping us create our Community Plan for Anne Arundel County:

Partnership Board of Directors

(listed on next page)

Partnership Guiding Coalition:

Over two hundred individuals representing 30+ agencies and non-profit partners across Anne Arundel County.

Staff

Lolita Andrews, Janiece Berly, Deirdre Berry, Asya Bridges, Jessica Brockman, Tracey Cherry, Trayshelle Cherry, Issac Colbert, Randy Curtis, Paulette Dyson, Anjeana Epps, Alexandria Garcia-Rodriguez Clay, Krystal Gill, Allison Holstrom, Shadeek Henry, Stephon Hutt, Elma Jones, Tyelise Long, Joy McCall, Shay Menendez-Brooks, Vernon Osborne, Christina Owens, Natali Quizhpi, Arianna Rodriguez, Lori Sena, Gloria Stefah, Diana Taylor, TyJuan Thompson, Julie Vanskiver, Renee Williams, Mizetta Wilson



ADDITIONAL PARTNERS AND COMMUNITY:

200+

SURVEY RESPONDENTS

including parents and caregivers, early educators, health care professionals, volunteers, community partners and others.

ATTENDEES OF THE
12 COMMUNITY OF HOPE MEETINGS **&** **2** LISTENING SESSIONS





Anne Arundel County Partnership
for Children, Youth & Families

BOARD OF DIRECTORS

Michael Yeakey, Chair
(Yeakey Alliance)

Kim Davidson, Vice Chair
(University of Maryland Medical System)

Jeff Geisbert, Citizen Member
(Heritage Community Church)

Delmonica Hawkins
(Anne Arundel County Department of
Juvenile Services)

Dr. Tonii Gedin
(Anne Arundel County Health Department)

Kara Weekly, Citizen Member
(Anne Arundel Workforce Development
Corporation)

Jim Lighthizer, Citizen Member
(Chesapeake Real Estate Group, LLC)

Adrienne Mickler
(Anne Arundel County Mental Health
Agency/Core Service Agency)

Susan Nolte, Citizen Member

Mary Spencer, Citizen Member
(Community Foundation of Anne
Arundel County)

Chris Rosenthal, Citizen Member
(Vallit Advisors, LLC)

Ryan Voegtlin
(Anne Arundel County Public Schools)

Rachael Maconachy,
(Anne Arundel County Department of
Social Services)

This community plan was created by listening to and involving thousands of diverse Anne Arundel County voices united by the belief that we can make Anne Arundel County ‘The Best Place for All’. It is guided by data but also by the belief that the lived experience of our residents should infuse all of our work. We ascribe to the old adage; ‘nothing about us without us’.

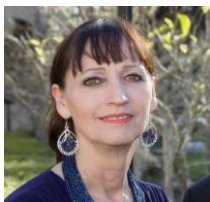
At first glance, Anne Arundel County is a prosperous community. However, there are pockets of poverty and economic distress spread, unequally, throughout its 415 square miles. The data that outlines those geographic areas can be found in our local community needs assessment, *Poverty Amidst Plenty*, a report released every three years. The report identifies four neighborhoods in the County with multiple negative social determinants of health, including poverty, limited job opportunities, lack of available transportation, unhealthy housing and few recreation and leisure opportunities. In these areas, the population is disproportionately African American and Latino, setting a geography and color of poverty for our county.

Those four areas: North County/Brooklyn Park, West County, South County and Annapolis, are where we are focusing our energy and resources. We call these areas our “Communities of Hope” because we are collaborating with neighbors, partners and decision makers to ensure ALL:

- Communities are safe for children, youth and families;
- Children enter school ready to learn; and
- Families are Economically Stable.

We are reimagining and rewiring our systems to promote **equity** as we elevate the voices of our community and support community-led solutions.

The Partnership for Children, Youth and Families, working with the County Executive, our board, Guiding Coalition, and hundreds of community partners, serves as the ‘backbone’ organization for this collective effort. Together, we are creating place and people based solutions in a post-pandemic world.



Pamela Brown, PhD
Executive Director

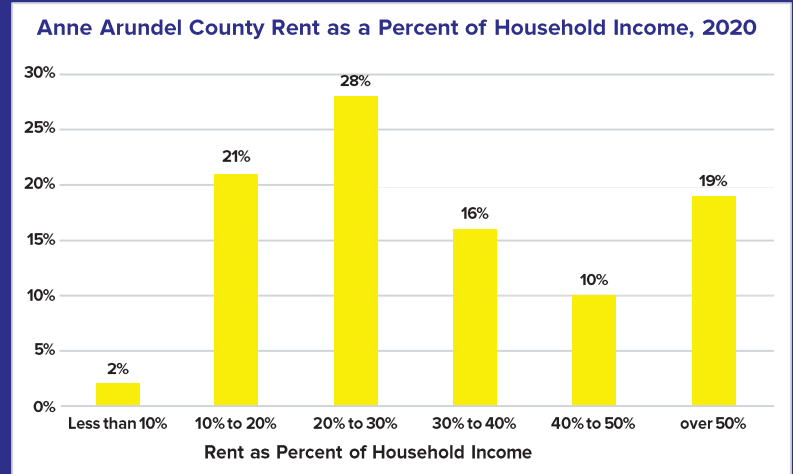
Vision

COUNTY EXECUTIVE PITTMAN'S VISION FOR ANNE ARUNDEL COUNTY:

THE BEST PLACE FOR ALL.

The Need

1 AFFORDABLE HOUSING



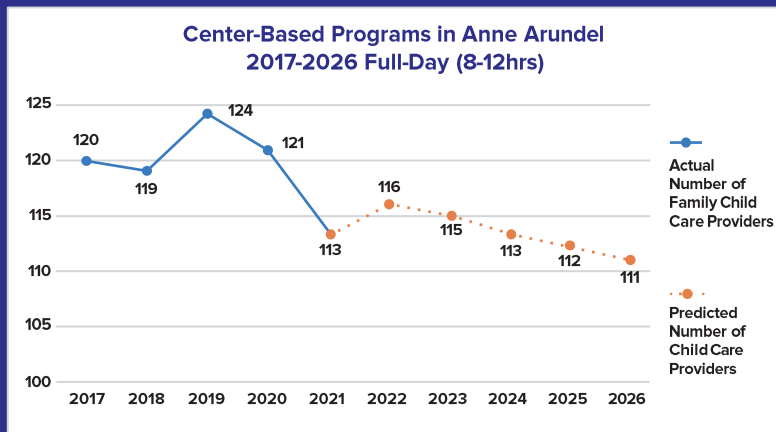
U.S. Census American Community Survey, 2021

2 TRANSPORTATION

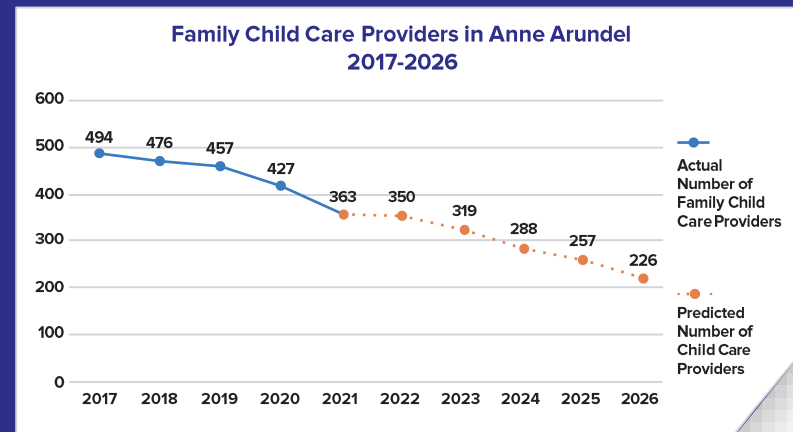
Since 2009, Anne Arundel County needs assessments have noted access to **transportation** as one of the top three needs. In the most recent assessment, transportation was noted by focus group and stakeholder interview participants as the number one need for county residents. Issues relate to how routes connect to one another, regularity of bus schedules, and the hours of service for residents who need to get to work. Lack of reliable transportation impacts our most vulnerable residents, including low-income families, persons with disabilities, young adults, and the elderly. In our most vulnerable neighborhoods, transportation is an even bigger barrier. Many parents in neighborhoods such as Brooklyn Park may have one unreliable car or no vehicle at all. This barrier often contributes to school absences.”

Poverty Amidst Plenty page. 64

3 CHILDCARE



Maryland Family Network, 2022



Maryland Family Network, 2022

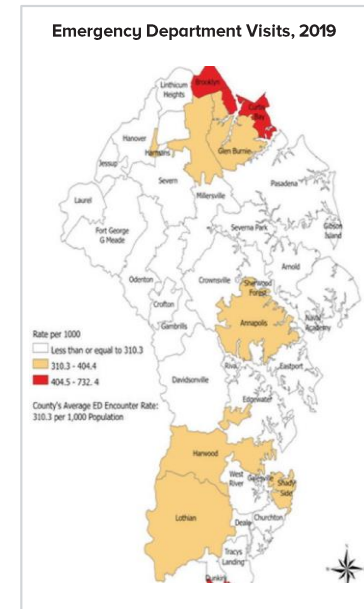
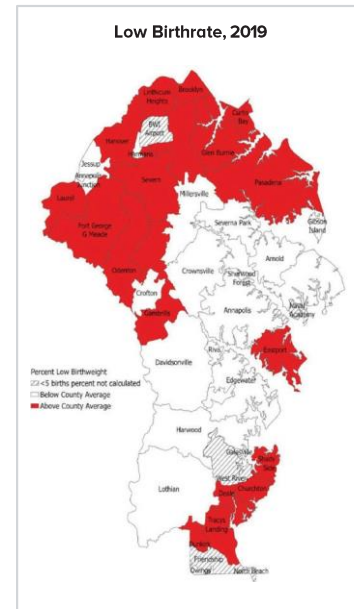
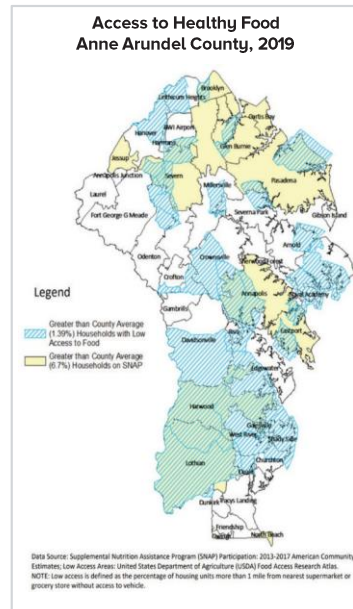
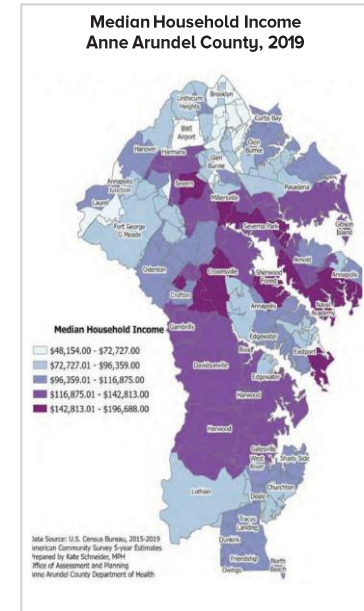
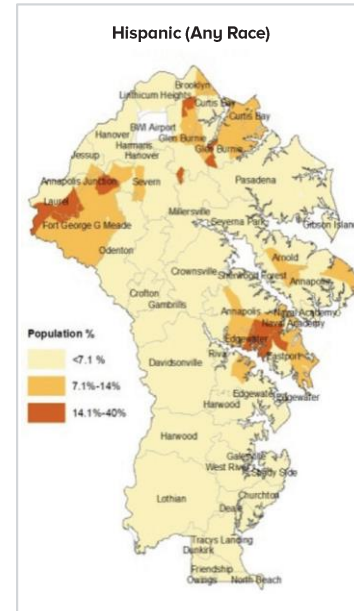
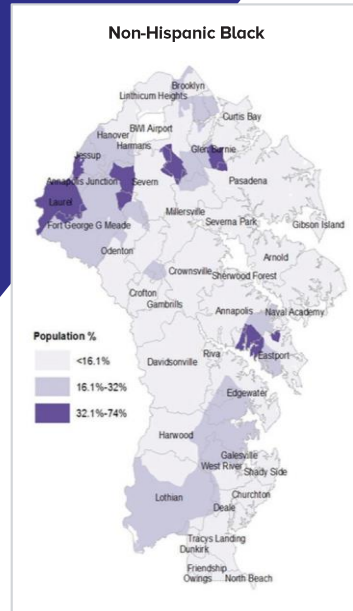


Anne Arundel County Partnership
for Children, Youth & Families

“When we look at these and other maps side by side, there is an unmistakable color and geography to poverty in our county resulting from centuries of systemic racism.”

Pamela Brown, Director

The Facts



Communities of Hope

In 2014, the Partnership, Department of Social Services Center, worked with Casey Family Services to launch the first Community of Hope in Brooklyn Park. Since then, we've launched three others in Annapolis, South County and West County.

RESIDENTS OF THESE COMMUNITIES ARE OFTEN:

- Disproportionately African American or Hispanic
- Low income or living in poverty
- Impacted by Adverse Community Environments and racial disparities including low birth weight, asthma, diabetes, heart disease, food access, incarceration, transportation and housing insecurity

ALL 4 COMMUNITIES EXPRESSED A NEED FOR:

- Safe transportation
- Affordable housing and childcare
- Affordable, culturally relevant mental health and primary care
- Communication infrastructure and bilingual services
- Violence interruption and conflict resolution
- Workforce development/ apprenticeships

With bilingual and family navigators, kinship support groups and care coordination teams provided through the Partnership's Systems of Care, each Community of Hope brings together neighbors, community partners and public agencies to discuss issues affecting their community and develop solutions. Each Community of Hope has a director who organizes bimonthly meetings and a variety of activities, programs and events throughout the year. While each community is unique, all four Communities of Hope share the same mission to make their neighborhoods safe and thriving places to live, grow up and raise a family.

For more information about the Annapolis & Brooklyn Park Community of Hope:

ANNAPOLIS

Focus Areas:

- Restorative practices
- Capacity building
- Mentors for youth
- Workforce development
- Parenting classes, including perinatal education
- Legal services for the immigrant community



Mizetta Wilson,
srwils00@aacounty.org
410-222-7264

Spotlight: Together with Annapolis High School, the Annapolis Community of Hope brought a focus on restorative practices and future careers to students at the school. Through a variety of thoughtful programs and dedicated social workers, students learn to identify their triggers in stressful situations, resolve disputes peacefully, and communicate better with their parents and peers. Building on deeper community relationships, more students signed up for mentoring and academic and career supports, and took part in field trips and internship opportunities.

BROOKLYN PARK

Focus Areas:

- Playgrounds
- Mobile fresh food
- ESOL services
- Health and nutrition programs
- Legal aid & immigration services
- Financial literacy programs
- Training for early childhood caregivers and educators
- Inspections and accountability for landlords

Spotlight: Brooklyn Park Library hosts a Community Baby Shower in partnership with the Judy Center and Community of Hope just in time for Mother's Day each year. At the event, expecting moms can get baby supplies like diapers and formula and be connected with a variety of County resources. This year, the event served 175 guests who took home more than 3,000 diapers total.

SOUTH COUNTY

Focus Areas:

- Community Center
- Internet/WiFi
- Shelter for the unhoused
- Employment services/apprenticeships
- Multi-service van
- Economic empowerment programs
- Opioid providers
- Expanded services to mobile home parks

Spotlight: Family Navigators in the South County are everywhere families need them to be. Whether at the community center, library, house of worship, or local park, they create one-stop shops for families to access a variety of social services. Through the Community of Hope, Family Navigators are excited to provide culturally appropriate food at local pantries and vital, life-saving trainings such as CPR in the Yard. They also take the frustration out of public benefits like SNAP to ensure that families can access the food they need, wherever they are.

For more information about the South County Community of Hope:



Tracey Cherry,
srcher88@aaacounty.org
410-222-7587

“I never knew there were so many services available to help families in South County. I’m so glad we came to this event.”

WEST COUNTY

Focus Areas:

- Playgrounds
- Mobile fresh food
- ESOL services
- Health and nutrition programs
- Legal aid and immigration services
- Financial literacy programs
- Training for early childhood caregivers and educators
- Inspections and accountability for landlords

Spotlight: The Severn community has long struggled with traffic-related safety issues, and residents and activists fought for 15+ years to secure speed bumps and traffic calming devices. Through the Community of Hope, a Navigator worked alongside the community to conduct research and compile data on accident rates, traffic volume, and near-miss incidents in the area. Armed with this evidence, and a petition signed by over 500 people, a team of residents presented a compelling case to the County and the County Executive, underscoring the pressing need for immediate action. After months of tireless advocacy, speed bumps and traffic calming devices were installed, and the community breathed a collective sigh of relief.

For more information about the West County Community of Hope:

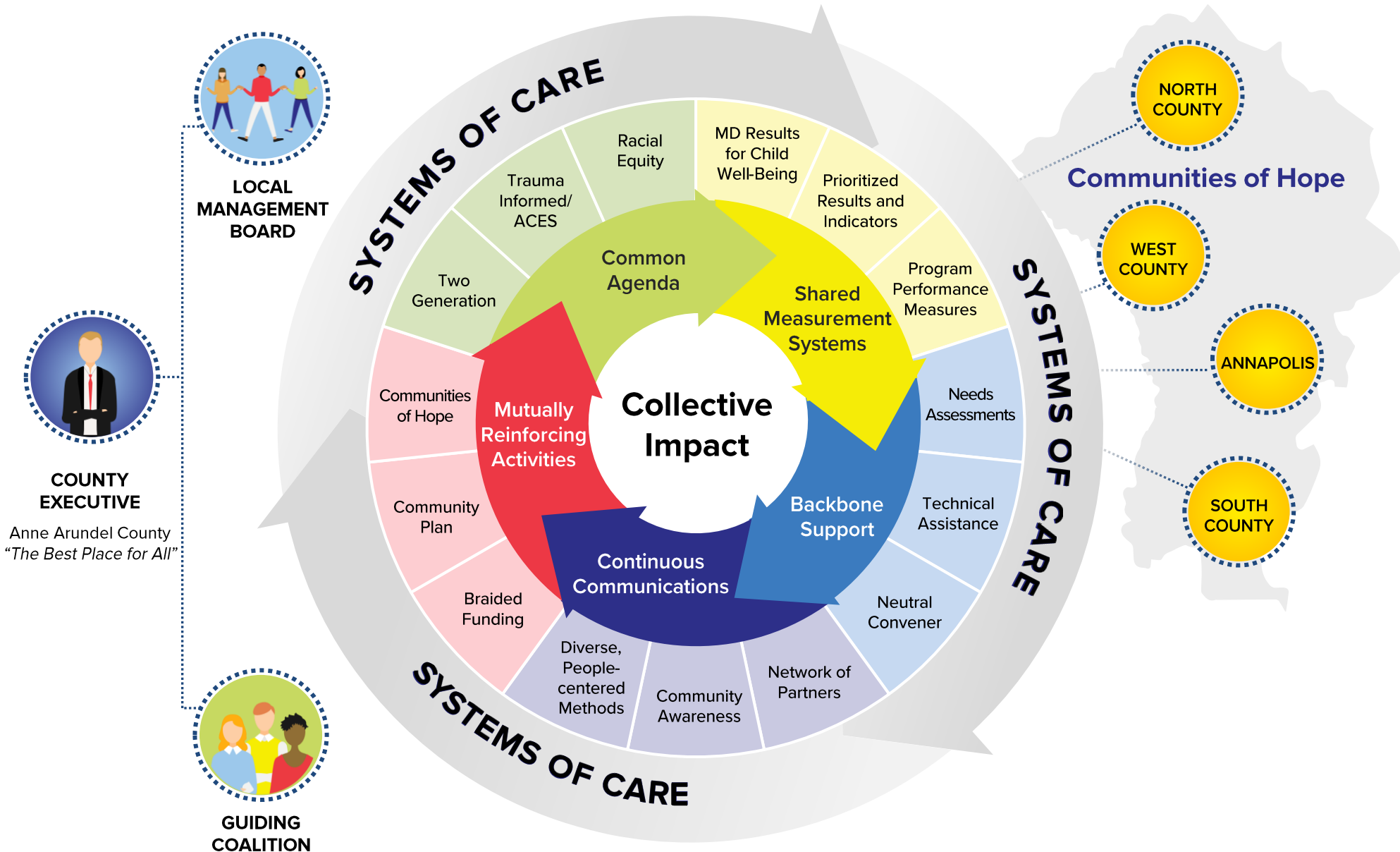


Randy Curtis
srcurt99@aaacounty.org
410-279-1068

Guiding Principles and Priorities for Collective Action



Community Plan 2024





“My husband and I are totally committed to raising our grandson in the best way possible. I was thrilled to connect with your kinship care support group. It was encouraging to see others who are making their way through similar challenges and comforting to feel that we are not going through this alone. Thank you for helping to make this journey smoother.”

Deb Clark, grandmother raising her grandbaby

Bringing It All Together, Together



COMMUNITY PLAN FOR CHILDREN, YOUTH AND FAMILIES | 2024-2026

PRIORITIES & STRATEGIES

Address the basic needs of community members including food, housing and safe spaces to gather or play

- Increase affordable housing, public transportation, and childcare
- Distribute resources in multiple languages and reading levels through trusted sources and channels (onsite, mobile, and digital)
- Expand use of community-based navigators to connect people to the right resources at the right time
- Invest in neighborhood programs and community-led solutions

Reimagine and Rewire Systems for Equity

- Identify and eliminate racial inequities
- Focus resources on underserved populations including young Children (age 0-5), Youth (age 16-24), Low-Income Families, and English Language Learners
- Build trusted relationships within local communities
- Deepen collaboration among agencies and use multi-disciplinary teams to reduce silos (systems of care)
- Apply multi-generational and trauma-informed approaches

Support and Advance Community-Led Solutions in Brooklyn Park/North County, City of Annapolis, South County, and West County

Strategies for all four Communities of Hope

- Reduce childhood poverty
- Collaborate with local residents and community leaders to determine and address needs
- Foster awareness, connection and belonging within and among communities
- Increase accessibility to open community spaces (i.e., community and recreational centers)
- Connect youth to vocational training/summer jobs

Community-specific strategies include:

- Brooklyn Park/North County
 - Bring resources to underserved families and youth
- City of Annapolis
 - Reduce youth gang and gun violence
 - Connect youth to pathways for school and life success
- South County
 - Improve connections to jobs, health care, and social services
- West County:
 - Increase collaboration and partnership among initiatives

RESULTS

- **Children enter school ready to learn**
- **Families are economically stable**
- **Communities are safe for children, youth, and families**



Anne Arundel County Partnership
for Children, Youth & Families

**FOR MORE INFORMATION ON THE PARTNERSHIP
OR OUR COMMUNITY PLAN, PLEASE CONTACT:**

Pamela Brown

Executive Director

SRBrow00@aacounty.org

P: 410-222-7652

Allison Holstrom

Chief Program & Compliance Officer

SRHols44@aacounty.org

P: 410-212-8694

Michael Yeaky

Board Chair

MYeaky13@gmail.com