

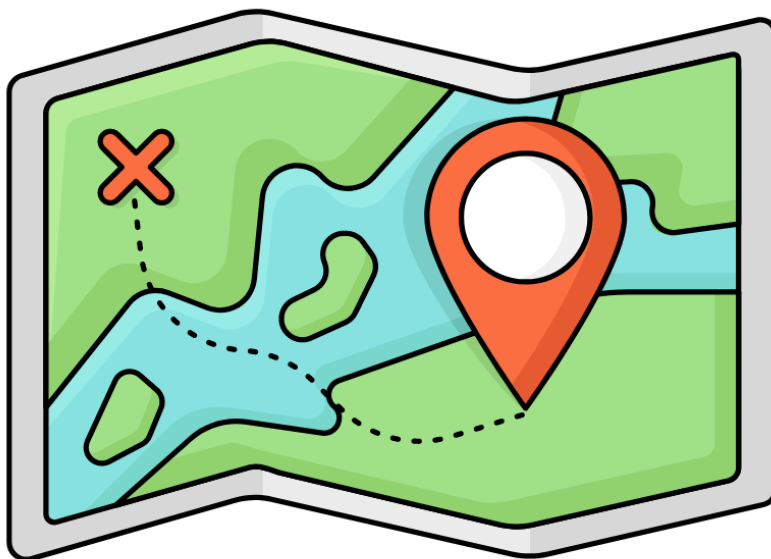
DENA SI

PASADENA SENIORS, INC.

4103 MOUNTAIN ROAD, PASADENA MD 21122

410-222-0030

2025 TRIP BROCHURE



**TRIP DESK HOURS:
TUESDAY, WEDNESDAY & THURSDAY
10:00AM -1:00PM**

410-222-0680

Trip Rules and Policies

Pasadena Seniors, Inc. (DENA SI), a 501c(3) Non-Profit Corporation

DENA SI is not a travel agency. All trips are DENA SI **FUNDRAISERS** and are open to any member of Anne Arundel County Senior Centers. Trips may require moderate to strenuous physical difficulty: including boarding and exiting a bus or boat; walking to, from, and through venues; and climbing steps or walking on uneven terrain. Participants must be self-sufficient and comply with all policies and rules. **Office hours are posted on the trip desk door.** If any accommodations are needed such as special seat assignments on the bus, **IT IS THE RESPONSIBILITY OF THE TRAVELER TO INFORM THE TRIP DESK AT THE TIME OF REGISTRATION.**

REGISTRATION

Registration and payments will only be accepted by the trip desk. Current key tags must be shown when registering for a trip. Participants must complete all of the required paperwork to include the Release of Liability form and make the appropriate deposit or payment in full by cash or check. Seat assignments will be the responsibility of the Trip Leader. It is NOT the responsibility of the trip desk to notify you of final payment due dates, **PLEASE MARK YOUR CALENDAR!** If a final payment is not received by the due date, **THE TRIP DESK HAS THE AUTHORITY TO CANCEL YOUR RESERVATION. IF A RESERVATION IS CANCELED NO REFUNDS WILL BE PROVIDED.**

WAITLIST

If all of the seats on a trip are filled, the trip desk will start a waitlist. If a seat becomes available, the trip desk will notify the next person on the list. Once notified, the person must come into the trip desk, complete the registration process and pay in full for the trip.

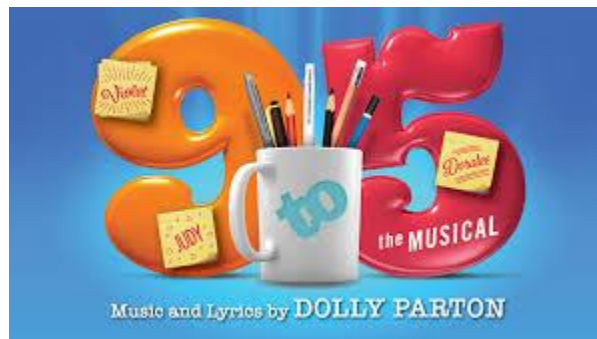
REFUNDS

ALL MONIES ARE NON-REFUNDABLE UNLESS A REPLACEMENT CAN BE FOUND FROM THE WAITLIST. Refunds will take place only after a replacement has been found and the trip is completed. If a trip is canceled due to lack of sufficient interest and/or by the venue or bus company; refunds will be issued promptly.

TRIP EXPECTATIONS

Participants should avoid using strong or excessive fragrances to prevent potential allergic reactions. Participants must furnish their own transportation to and from the meeting point. Parking location will be dependent upon the trip and addressed during registration. Trip participants are encouraged to carry an index card with their name, address, emergency contact and any critical or pertinent medical information. The cell phone number of the Trip Leader will be given to participants for emergency purposes. Should you become separated from the group, use this cell number to contact the Trip Leader. **BUSES WILL NOT WAIT FOR ANYONE.** Participants must adhere to scheduled arrival and departure times. Return times may change depending upon traffic. **Recommend bringing water and a snack for the return trip.** Absolutely no smoking or alcoholic beverages on the buses. Anyone who exhibits inappropriate behavior as determined by the trip leader, and approved by the DENA SI Board of Directors, may be banned from further trips.

Toby's Dinner Theater
9 to 5 The Musical
Wednesday, March 5, 2025



Tumble outta' bed and stumble to 9 to 5 The Musical. With music and lyrics by Dolly Parton, 9 to 5 is based on the smash hit movie. Three unlikely friends take control of their office and learn there is nothing they can't do!

The bus departs the Two Rivers parking lot at 9:30 am and returns at 5:30 pm. A deposit of \$75 is due at sign-up. The total cost of the trip is \$130. Final payment is due by January 3, 2025.

Sight and Sound
Noah
Wednesday, March 26, 2025



With a catastrophic storm on its way, Noah is given a monumental task: build a boat big enough to save his family from a flood that will cover the entire earth. As Noah endeavors to live faithfully in the midst of an increasingly chaotic world, can he trust that God's promises run deeper than the rising waters around him?

Returning for one season only, this landmark production takes you on board one of the world's best-known voyages as live animals fill the stage and aisles. Set sail inside the enormous ark as this extraordinary story comes to life in this special 30th anniversary season!

Lunch at Hershey Farms following the show.

The bus will depart from Lakeshore Shopping Plaza in front of Two Rivers at 8:00 a.m. and return at 6:00 p.m. The total cost of the trip is \$175, with a deposit of \$75 due at sign-up. The final payment is due January 24, 2025.

Branson Missouri Show Trip Extravaganza

Saturday, April 5, 2025 - Sunday, April 13, 2025

9 Days 8 Nights

Single Room rate \$ 1,445

Double Room Rate \$ 1,140

Triple Room Rate \$ 1,120

Price is per person, based on double occupancy, single and triple

Deposit \$75 due at the time of sign-up. Final Payment Due: January 10, 2025

Cost includes:

Motorcoach transportation, 8 nights lodging including 4 consecutive nights in the Branson area.

Admission to 6 Fabulous Shows! Including:

Three Morning Shows: JERSEY NIGHTS SHOW, DOUG GABRIEL MORNING SHOW & BEACH BOYS: CALIFORNIA DREAMIN'

Three Evening Shows: THE HAYGOODS SHOW, EDGE OF ILLUSION featuring REZA & HUGHES MUSIC SHOW

Bus will depart at 8 am from Green Valley Supermarket, Chesterfield Plaza on Saturday, April 5, 2025 and time of return on Sunday, April 13, 2025 (TBD).

Atlantic City, Cape May & Philadelphia

Monday, May 19, 2025 - Friday, May 23, 2025

5 Days & 4 Nights

Single Room Rate \$1,100

Double Room Rate \$ 870

Triple Room Rate \$ 850

Price is per person, based on double occupancy, single and triple

Deposit \$75 due at the time of sign-up.

Final Payment Due: February 19, 2025

Cost includes Motorcoach, 4 nights lodging in an Atlantic City Casino hotel with a casino bonus. 8 meals including 4 breakfasts and 4 dinners. A guided tour of Philadelphia, a trolley tour of Cape May with a tour of a historic Cape May Victorian home, and a guided tour of Cape May Point and Cape May Point lighthouse. Individuals will also have free time to enjoy the famous Atlantic City Boardwalk.

Bus will depart Monday, May 19, 2025, at 8 am from Green Valley Supermarket, and time of return on Friday, May 23, 2025 (TBD).

Dorchester Seafood & Wine Tour

Wednesday, June 18, 2025

Enjoy a guided tour through the lush pine forests and over the waterways of Dorchester County, en route to Hoopers Island. There, you will enjoy a home-cooked, buffet-style seafood meal at Old Salty's Restaurant. After lunch, you will visit Emily's Produce, a produce market that is operated by a family that has farmed the fields of Dorchester County for 7 generations. Following that, you will visit Layton's Chance Vineyard & Winery, which is owned and operated by the Layton family. Here you will enjoy a wine tasting, along with the opportunity to purchase wine to take home. On the way back, you will stop at Kool Ice & Seafood, where you will have the opportunity to purchase seafood to take home.

Bus departs the Two Rivers parking lot at 8:00 am and returns at 8:00 pm. A deposit of \$75 is due upon sign-up. The total cost of the trip is \$130. The final payment is due by May 18, 2025.



Choptank Crabfeast

Thursday, July 24, 2025



The Choptank Riverboat Company's reproduction of an authentic 80-foot turn-of-the-century paddle wheel has a fully enclosed lower deck with heating and air conditioning. The covered upper deck is perfect for sightseeing while cruising the Choptank River. Enjoy a delicious crab feast consisting of steamed crabs, Maryland crab soup, fried chicken, clam strips, corn on the cob, and Cole Slaw. Enjoy dessert, coffee, tea, and sodas.

Bus departs Two Rivers parking lot at 9:00 am and returns at 5:00 pm

Total Cost of trip: \$130; \$75 Deposit due at time of sign up. Final Payment due June 24, 2025.

OHIO ISLAND HOPPIN'

Monday, August 11 through Friday, August 15, 2025

Explore the islands of majestic Lake Erie. Set sail for a full day on Lake Erie with stops at Kellys Island and Bass Island. Tour the resort town of Put-in-Bay aboard your tram with stops at the Antique Car Museum and Butterfly House. Experience the "wildlife" on a ride through African Safari Wildlife Park ride and be a kid again on an antique carousel at the Merry-Go-Round Museum.

Single Room Rate \$ 1,000

Double Room Rate \$ 755

Triple Room Rate \$ 740

\$75.00 deposit due at signing with Final Payment due: May 12, 2025. Bus will depart on August 11, 2025, at 8 am from Green Valley Supermarket, Chesterfield Plaza, and time of return on August 15, 2025 (TBD).

CANADA & NEW ENGLAND CRUISE
WITH ROYAL CARIBBEAN CRUISE LINE ON THE VISION OF THE SEAS
10 DAYS/9 NIGHTS - SEPTEMBER 11 - 20, 2025

		Double	Single
Inside Cabin Category	4V	\$ 980	\$ 1,687
Inside Cabin Category	2V	\$1,073	\$ 1,873
Outside Cabin Category	4N	\$1,138	\$ 2,003
Outside Cabin Category	2N	\$1,240	\$ 2,207

Rates are per person double or single occupancy and include cruise, port charges, and government fees. **PASSPORT REQUIRED.**

Transportation to/from the cruise pier is on your own. Those who book early get the best prices, the best cabin locations, and their preferred dining times. For reservations, please contact Grand American Tours at 1-800-423-0247.

Come to the Trip desk to get the form to fill out before calling Grand American Tours.

After booking your cruise with Grand American Tours, please visit the Pasadena Senior Center/Trip Desk to sign the Emergency Contact and Liability forms.

For more information, please contact the Trip Desk at 410-222-0680.

Holiday Inn
Dutch Apple Dinner Theatre
Tuesday, November 11, 2025

Each holiday is celebrated with thrilling dance numbers, laugh-out-loud comedy, and a parade of Irving Berlin hits in this heartwarming, high-energy tap dance extravaganza. Hear your favorites including *Blue Skies*, *Easter Parade*, *Heat Wave*, *Cheek to Cheek*, and *White Christmas*.

Deposit of \$75 due at sign up. Total cost of the trip is \$125. Final payment is due by September 30, 2025.

Bus departs Two Rivers parking lot at 8:00 am and returns at 5:00 pm.

2025

January

Sun	Mon	Tue	Wed	Thu	Fri	Sat
29	30	31	1	2	3	4
5	6	7	8	9	10	11
12	13	14	15	16	17	18
19	20	21	22	23	24	25
26	27	28	29	30	31	1
2	3	4	5	6	7	8

February

Sun	Mon	Tue	Wed	Thu	Fri	Sat
26	27	28	29	30	31	1
2	3	4	5	6	7	8
9	10	11	12	13	14	15
16	17	18	19	20	21	22
23	24	25	26	27	28	1
2	3	4	5	6	7	8

March

Sun	Mon	Tue	Wed	Thu	Fri	Sat
23	24	25	26	27	28	1
2	3	4	5	6	7	8
9	10	11	12	13	14	15
16	17	18	19	20	21	22
23	24	25	26	27	28	29
30	31	1	2	3	4	5

April

Sun	Mon	Tue	Wed	Thu	Fri	Sat
30	31	1	2	3	4	5
6	7	8	9	10	11	12
13	14	15	16	17	18	19
20	21	22	23	24	25	26
27	28	29	30	1	2	3
4	5	6	7	8	9	10

May

Sun	Mon	Tue	Wed	Thu	Fri	Sat
27	28	29	30	1	2	3
4	5	6	7	8	9	10
11	12	13	14	15	16	17
18	19	20	21	22	23	24
25	26	27	28	29	30	31
1	2	3	4	5	6	7

June

Sun	Mon	Tue	Wed	Thu	Fri	Sat
1	2	3	4	5	6	7
8	9	10	11	12	13	14
15	16	17	18	19	20	21
22	23	24	25	26	27	28
29	30	1	2	3	4	5
6	7	8	9	10	11	12

July

Sun	Mon	Tue	Wed	Thu	Fri	Sat
29	30	1	2	3	4	5
6	7	8	9	10	11	12
13	14	15	16	17	18	19
20	21	22	23	24	25	26
27	28	29	30	31	1	2
3	4	5	6	7	8	9

August

Sun	Mon	Tue	Wed	Thu	Fri	Sat
27	28	29	30	31	1	2
3	4	5	6	7	8	9
10	11	12	13	14	15	16
17	18	19	20	21	22	23
24	25	26	27	28	29	30
31	1	2	3	4	5	6

September

Sun	Mon	Tue	Wed	Thu	Fri	Sat
31	1	2	3	4	5	6
7	8	9	10	11	12	13
14	15	16	17	18	19	20
21	22	23	24	25	26	27
28	29	30	1	2	3	4
5	6	7	8	9	10	11

October

Sun	Mon	Tue	Wed	Thu	Fri	Sat
28	29	30	1	2	3	4
5	6	7	8	9	10	11
12	13	14	15	16	17	18
19	20	21	22	23	24	25
26	27	28	29	30	31	1
2	3	4	5	6	7	8

November

Sun	Mon	Tue	Wed	Thu	Fri	Sat
26	27	28	29	30	31	1
2	3	4	5	6	7	8
9	10	11	12	13	14	15
16	17	18	19	20	21	22
23	24	25	26	27	28	29
30	1	2	3	4	5	6

December

Sun	Mon	Tue	Wed	Thu	Fri	Sat
30	1	2	3	4	5	6
7	8	9	10	11	12	13
14	15	16	17	18	19	20
21	22	23	24	25	26	27
28	29	30	31	1	2	3
4	5	6	7	8	9	10