

# DPW & YOU

— *Making a difference, together* —

## Spriggs Farm Park Shoreline Improvements Pre-Construction Public Meeting

Project No. P468700

Contract No. P468709

---

Presented by:

Anne Arundel County Department of Public Works  
with the Department of Recreation and Parks

October 8, 2024



DPWandYOU.com



# Introductions

- Department of Public Works
  - Melissa Harlinski (Project Manager)
- Department of Recreation and Parks
  - Alison Woodfield (Project Manager)
  - Bruce Bruchey (Chief, Planning & Construction)
- BayLand Consultants & Designers, Inc.
  - Anna Johnson, P.E. (Project Manager)
  - Evan Mazur (Engineer)
- Construction Contractor – ShoreLine Design, LLC
  - Wes Matheu (President)

# Purpose & Agenda

- Meeting Purpose
  - Overview of the project features
  - Introduce construction personnel and activities
  - Answer questions
- Shoreline Improvements Project
  - Background
  - Proposed Design Components
  - Construction Activities
  - Schedule
  - Contact Information
- Q&A on Shoreline Improvements Project



# Project Background

- 57-acre park on the Magothy River
- 800 Linear Feet of shoreline
- Erosion rate of  $\pm 2$  feet/year
- Passive use park with trails throughout the park
- No ADA parking or access to shoreline



# Spriggs Farm Park Existing Conditions Shoreline

## West Shoreline

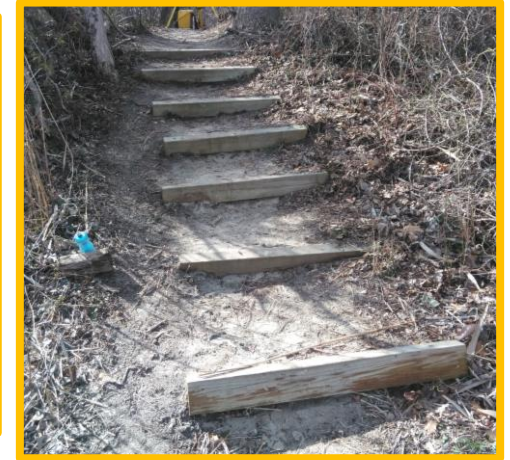


## East Shoreline



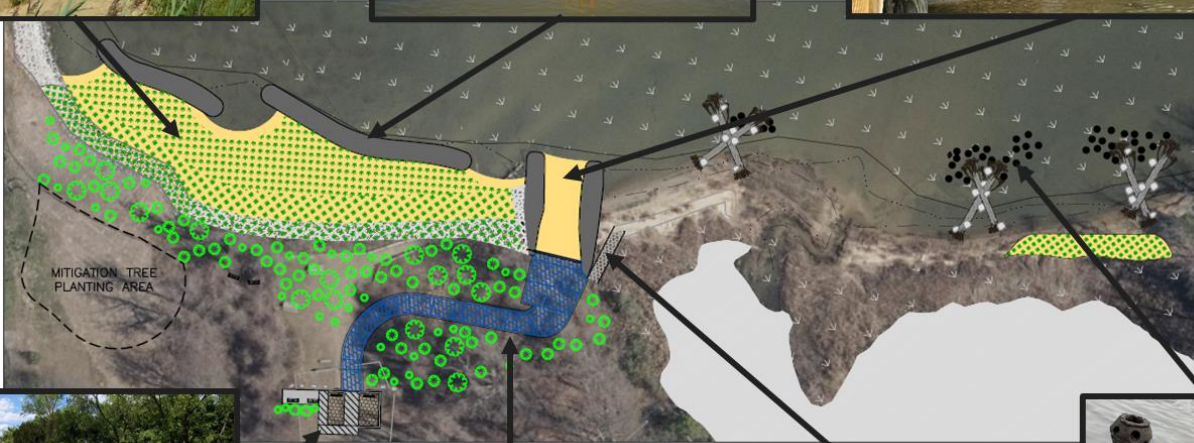
# Spriggs Farm Park Existing Conditions – Access Path

- Narrow, eroding path with exposed tree roots
- Grades too steep for ADA compliant access



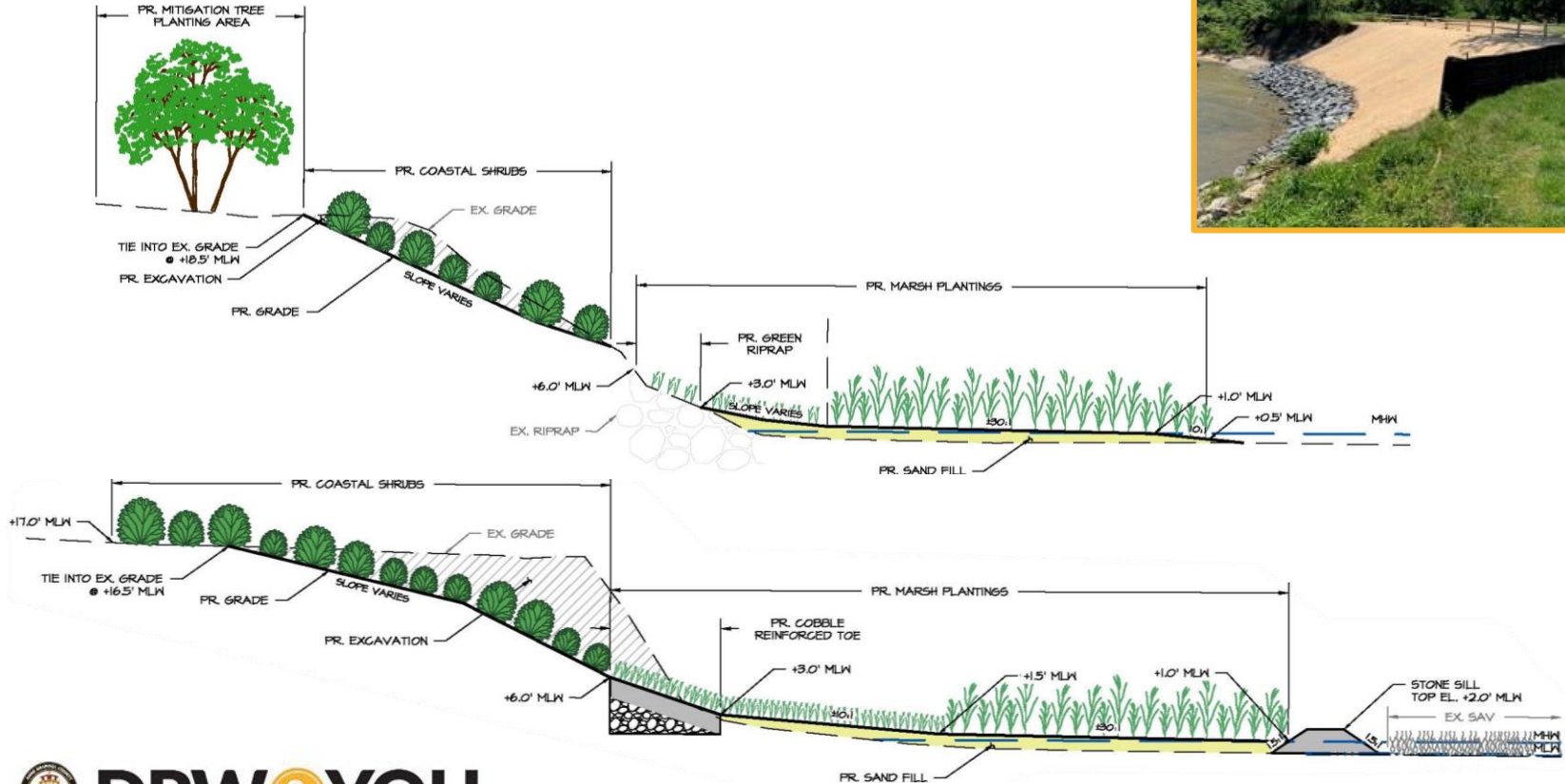
# Spriggs Farm Park Shoreline Improvement Design Goals

- Protect against further coastal erosion by implementing living shoreline techniques and avoid impacts to existing SAV
- Provide safe, natural transition from tidal to upland areas
- Provide more formal kayak launch
- Provide ADA-accessible path to kayak launch area
- Increase coastal resiliency of park shoreline and upland area

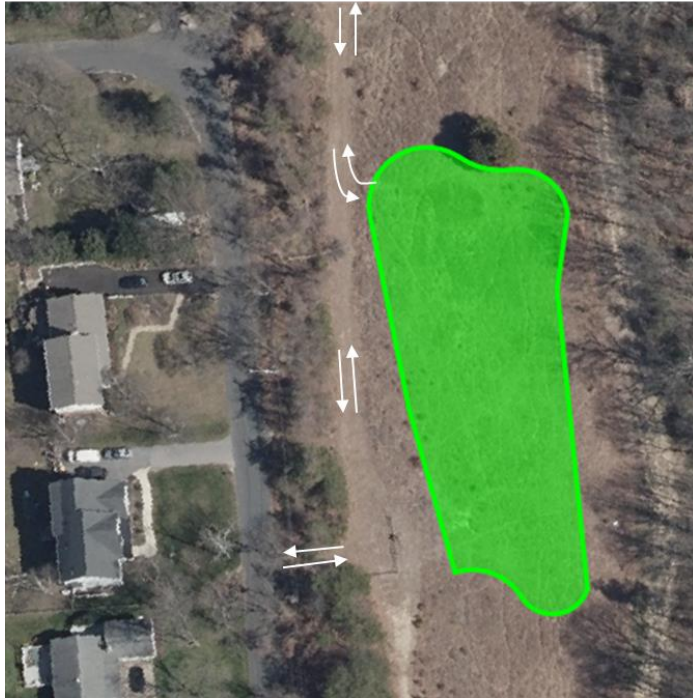




# Typical West Shoreline Cross-Sections



# Placement Area



# Spriggs Farm Park Shoreline Improvement Design Goals

- Protect against further coastal erosion by implementing living shoreline techniques and avoid impacts to existing SAV ✓
- Provide safe, natural transition from tidal to upland areas ✓
- Provide more formal kayak launch ✓
- Provide ADA-accessible path to kayak launch area ✓
- Increase coastal resiliency of park shoreline and upland area ✓

# Schedule for Shoreline Improvements Project

- Schematic Design (30%) – June 2023
- Design Development (60%) – Winter 2023
- Federal, State & County Permitting – Summer 2023 – Summer 2024
- Construction Documents – Summer 2024
- Public Bid Solicitation – Summer 2024
- Start of Construction – November 2024

← We are here

# Construction



- Contractor – ShoreLine Design, LLC
  - Local Anne Arundel Marine Contractor based in Edgewater, MD
  - Specializes in Marine Construction for a variety of clients
  - Wes Matheu – President
    - 42 years of Experience with USACE – Baltimore District and as President of ShoreLine Design
  - Constructed over 14 miles of living shorelines
  - Recent projects include Jack Creek Park Shoreline Protection, Beverly Triton Nature Park, Sandy Point, Fishing Creek Farms Living Shoreline, etc.
- Construction Inspection – BayLand Consultants & Designers, Inc.
  - Rick Pugh, On-site Inspector: [rpugh@baylandinc.com](mailto:rpugh@baylandinc.com)
- Construction Sequence (110 Days)
  - Issue Notice to Proceed & Pre-Construction Meeting
  - Mobilization of the Equipment and Personnel
  - Construction of Rock Structures
  - Grade Steep Banks and place in On-Site Placement Area
  - Placement of sand for living shoreline
  - Install ADA Permeable Path, Parking, and Companion Seating
  - Marsh and Shrub Plantings
  - Restoration of Disturbed Areas and Mitigation Tree Plantings

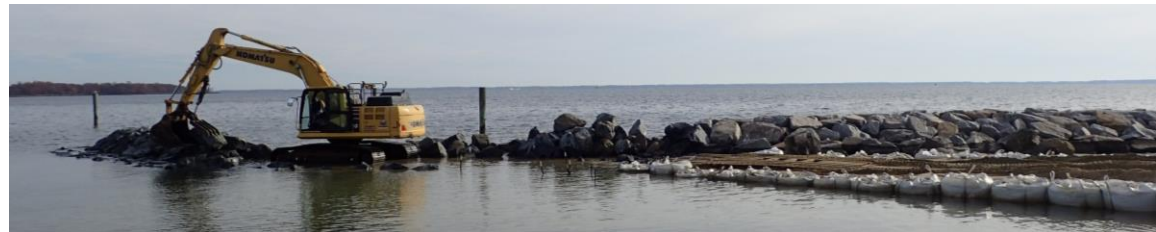
# Construction Access

- Construction entrance across from 896 Bayberry Drive
- Construction vehicle traffic
  - On-site placement of surplus material to reduce traffic
- Coordination with bus schedule



# Construction – ShoreLine Design, LLC

- Access
  - Material and equipment by land
  - Landside access via gated maintenance entrance
- Equipment
  - Excavator
  - Bulldozer for sand grading
- Material Quantities
  - Armor Stone – 318 tons
  - Sand – 635 cubic yards
  - Marsh/Shrub Plantings – 13,000 square feet
  - Permeable Paver Path – 2,424 square feet



# Q & A – Spriggs Farm Park Shoreline Improvements Project

## Contact Information

Melissa Harlinski, Project Manager

[pwharl45@aacounty.org](mailto:pwharl45@aacounty.org)

410-222-4126 (office)

Alison Woodfield, Project Manager

Comments/Questions: [drp\\_capital-projects@aacounty.org](mailto:drp_capital-projects@aacounty.org)

Rick Pugh, PE BayLand Construction Manager

[rpugh@baylandinc.com](mailto:rpugh@baylandinc.com)

410-694-9401 (office)

(717)-919-8148 (cell)



# Follow DPW



**FACEBOOK**

@annearundeldpw



**YOUTUBE**

Anne Arundel County DPW



**INSTAGRAM**

@annearundelcountypw



**LINKEDIN**

Anne Arundel County  
Department of Public Works



**X**

@AACoDPW



**DPW & YOU**



## Bureau of Utility Operations

---

**24-Hour Emergency Water Service:**  
(410) 222-8400  
**Billing Inquiries:** (410) 222-1144



## Bureau of Waste Management Services

---

**Bulk Trash Service / Curbside Collections:** (410) 222-6100



## Bureau of Engineering

---

**General Inquiries:** (410) 222-7500



## Bureau of Highways

---

**General Inquiries:** (410) 222-7321  
**Snow Line:** (410) 222-4040  
**Email:** [hwyscustomer@aacounty.org](mailto:hwyscustomer@aacounty.org)



## Bureau of Watershed Protection and Restoration

---

**General Inquiries:** (410) 222-4240

## Customer Relations

---

**General Inquiries:** (410) 222-7582  
**Email:** [pwcust00@aacounty.org](mailto:pwcust00@aacounty.org)

