



Quiet Waters Retreat Stakeholder Briefing



Meeting Purpose

The purpose of this meeting is:

Review the Process

- Review the Master Plan process
- Review the Role of a Stakeholder Advisory Group
- Tips for Compiling Feedback

Plan

- Present three (3) Concepts

What is a Master Plan?

- ✓ A Master Plan is a road map to achieve a long-term vision for the park:

Overall theme

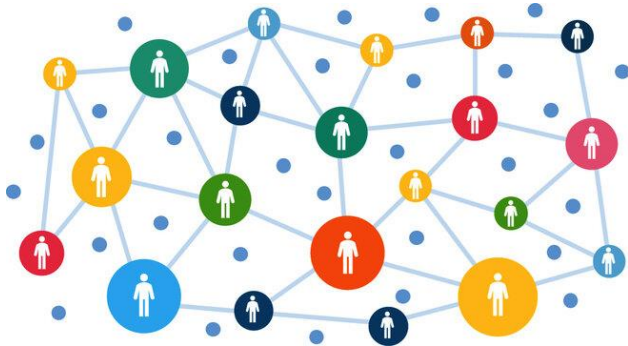
Needs and desires

Amenities and programming

- ✓ Community input is sought and considered:
Not all preferences can be accommodated

Role of a Stakeholder Advisory Group

- Provide input during the decision-making process
- Help Rec & Parks define how to achieve its vision
- Provide insight and knowledge
- Be a champion for the project
- Collaborate, seek solutions, and compromise
- Consider the greater good
- Compile feedback from the community and present it to the group for consideration
- Work toward a common goal
- Synergize – the parts as a whole should result in a greater outcome than the individual parts



Tips for Compiling Feedback

As a member of the stakeholder advisory group, part of your role is to gather valuable feedback from the community to help shape the future of Quiet Waters Park Retreat. You should engage with neighbors, churchgoers, park users, members of your organizations, homeowner associations, civic associations, and anyone who would benefit from using the park.

Key Objectives:

- Collect diverse opinions and suggestions to ensure the master plan reflects the needs and desires of the entire community.
- Champion the project by highlighting its potential benefits and encouraging constructive dialogue.
- Document and Share Feedback - Keep detailed notes of all feedback received to share with the Department of Recreation and Parks.
- Emphasize how the master plan will give the residents of Anne Arundel County a place to enjoy a range of passive activities in a beautiful setting.



Tips for Compiling Feedback

Ideas for Engagement:

- Organize Community Meetings - these can be formal or informal. Ensure meetings are accessible to all community members, considering schedules and locations.
- Use Multiple Communication Channels - Leverage social media, email newsletters, and local bulletin boards to spread the work. Distribute flyers and posters in community centers, churches, and other places where appropriate.
- Create Surveys and Feedback Forms - Design easy-to-understand surveys that allow residents to share their thoughts.
- Engage in One-on-One Conversations - Approach community members individually to gather personalized feedback.

Address Concerns Constructively:

- If concerns or criticism arise, address them with a positive and solution-oriented approach.
- Reassure community members that their voices are heard and valued, and explain how you will take note of their concerns and share them with the project team.
- Be Respectful and Inclusive: Treat all community members with respect regardless of their opinions.



County Vision for Quiet Waters Retreat

- Accessible
- Passive recreational use
- Natural

“...give the residents of Anne Arundel County a place to enjoy a range of passive activities within a beautiful setting”

cover letter, Annapolis Neck Park Master Plan, July 22, 1988

Stakeholder Meeting/Workshop #1 - Ideas



General Thoughts

Environmental Considerations

- Invasive Species Removal
- Protect Wildlife
- Solar Lighting
- Stormwater Treatment of Dog Park
- Pollinator Gardens

Recreation Opportunities

- Passive Recreation
- Modest Education Signage
- Passive Trails (undeveloped, ADA)
- Overlook/Views
- Water Access/Launch/Boathouse
- Functioning Water Access
- Interactive Art
- Fairy Garden
- Wildlife Viewing - Loden Pond/Old Boathouse

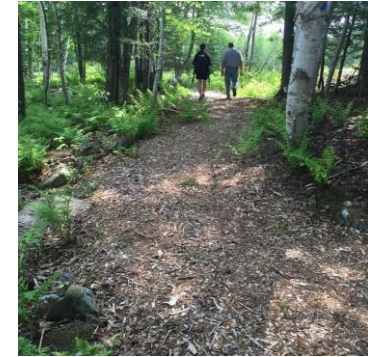
Amenities

- Port O Johns I
- Entrance from Forest Dr. (pedestrian)
- Cliff (Bunk Stabilization)
- Small Shelter / Overlook
- Benches
- Remove Chain Link Fencing
- Outdoor Classroom
- Controlled Access / Forest Hills – Electronic Gate
- Park Maintain Nursery (Educational)
- Safety Fencing (Cliff Side)
- Bluebird Boxes II
- Composting (Green Bathroom)



Board Sticky Notes #1

- Natural + Add Trails
- Interpretive Signage
- Controlled Access Via Substantial Fencing / Gate – Open/Closed as Part of Opening/Closing Procedures
- Electronic Access Gate
- ADA Accessible (Fully)
- Outdoor Classroom for Ranger Programs
- Native Wildflower Meadow
- Bathroom / Comfort Room
- Public Water Access
- Water Access / Soft Launch
- Invasive Species Removal
- Functioning Water Access (for Staff use Only – Nursery Plantings)
- Passive Park – Maintained Nursery of Native Plants + Educational Signage

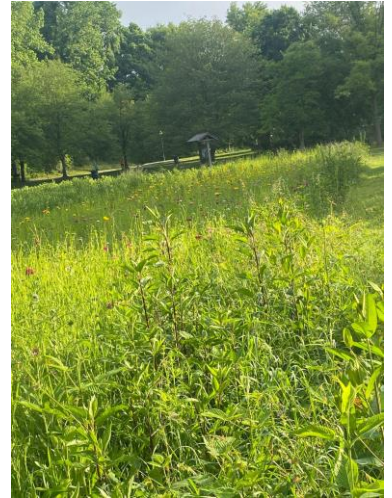


Board Sticky Notes #2

- Limited Infrastructure, Benches, Rustic Trails, Native Plants
- Continue Bamboo Removal
- Bathroom Showcasing Environmentally Friendly Design (Composting Toilets/Renewable Energy) with Signage
- Add Trail Connecting Amenities (Pervious with Signage for Education)
- Bluebird Boxes
- Kudzu / Invasive Vines Treatment
- Hiking/ Walking Trails
- Create Public water Access
- Fairy Garden Building Area (Signage, Children Gather Natural Items to Build)
- Safety Really Good Fence – Split Rail
- Benches for View
- Interactive Art (Ex. Found Material)
- Outdoor Classroom - Classroom / Ground

Board Sticky Notes #3

- Stormwater Treatment for Dog Park
- Remove Chain Link Fencing
- Remove Chain Link Fencing along Forest Hill and Clean-up Boundary
- Use Existing Roads and Paths for ADA Permeable Path
- Install Bluebird Boxes & Owl Boxes
- Floating Treatment Wetlands as Educational / Demonstration Project to Treat Nutrients from Dog Park
- Wildlife Viewing Platform Replaces Old Boathouse w/ Permeable Pavers Trail Down to the Platform w/ Benches and Picnic Area

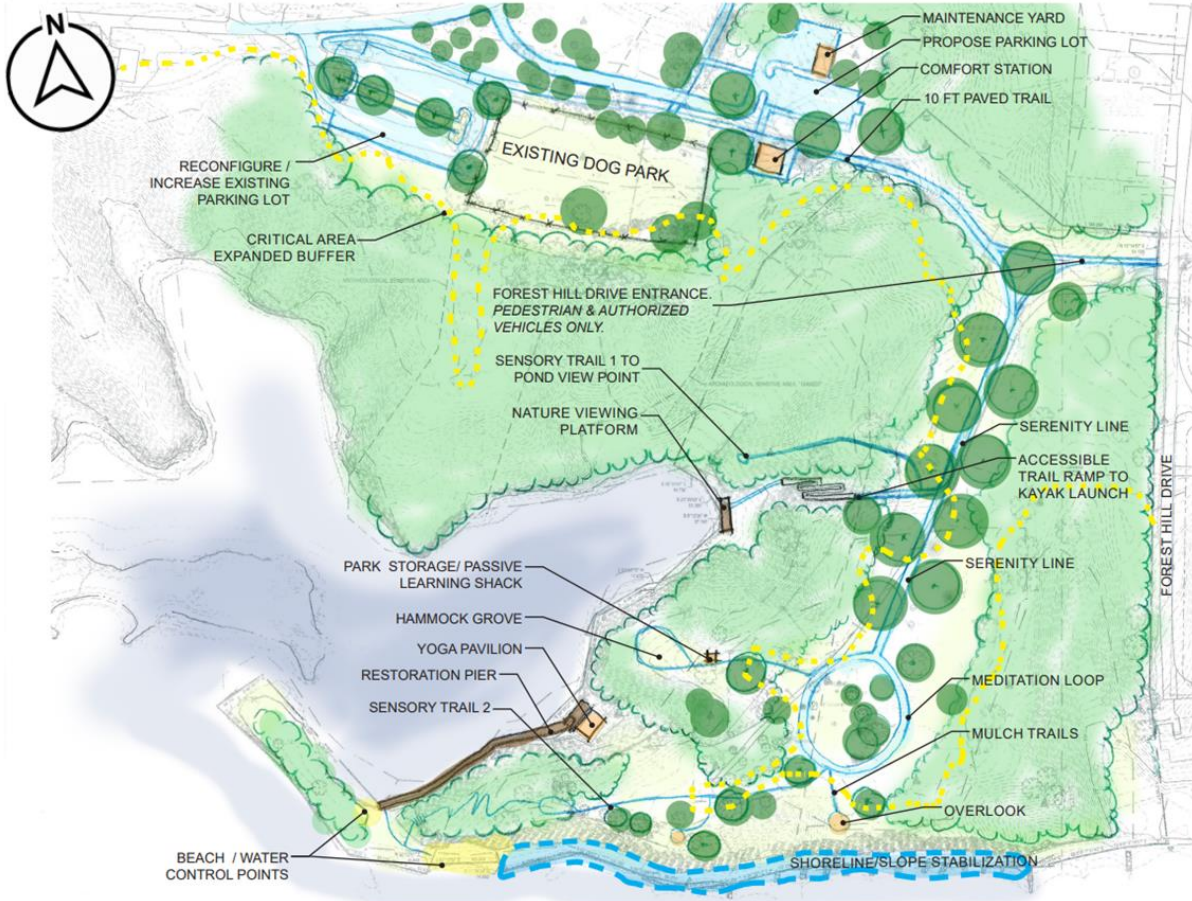


Board Sticky Notes #4

Consider the environmental destruction during the preparation for any construction and actual construction

- Can the area recover?
- If so, how long?
- Should be Improved Environment?
- What is the Co. definition of “Passive Recreation Activity”?
- Signage: Modest, Unobtrusive, Educational
- Network of Passive Trail Undeveloped / ADA Complaint (Permeable)
- Toilets: No Structure, Porta Potti at Northern Portion Entry Area, Maintained & Clean
- Solar Lighting where needed, No Utilities, Promote Dark Skies
- No Sewage System, No Electricity.
- Protect Wildlife: Birds Nesting in Cliff, Fox, Birds, Nesting and Visiting
- Entrance from 610 Forest Dr Gate
- ADA Compliant Trails using environmentally friendly surface, e.g. KBI Flex pave
- Pollinator Gardens
- Beekeeping (Somewhere out of the way)
- Water Access / Soft Launch
- Boat House Rehabilitated to Accommodate Kayaks, Paddleboards Only
- Minimal Infrastructure, Water Access Considered
- Benches near Overlook Area
- Shelter or Very Small Pavilion: No BBQ Near Overlook Cliff but To Side to not Block View
- Overlook w/ Vista of South River & Severn
- Cliff & Banks Stabilization. Modest, Unobtrusive Perimeter Fencing at Cliff
- Bees Station Signage

Concept 1



Objective: Establish Quiet Waters Park as a sanctuary for mental and physical well-being, with spaces designed for relaxation, reflection, and holistic health practices. This concept focuses on promoting wellness through passive, low-impact engagement with nature, ensuring minimal disruption to sensitive conservation areas like Loden Pond.

- Key Features:
- Hammock Grove: A shaded, peaceful area with hammocks where visitors can relax and unwind, located atop a pine forested ridge off the Meditation Loop.
 - Meditation and Yoga Spaces: Quiet spots for yoga and meditation, near the South River Overlook or in secluded gardens, equipped with platforms or soft ground coverings.
 - Nature Viewing Platform: A serene Environmental Overlook dedicated for watching birds, wildlife, and natural processes along the water's edge, ideal for education and conservation-focused experiences.
 - Sensory Trail: A trail designed to engage all five senses, featuring fragrant plants, textured surfaces, water features, and soothing sounds to promote relaxation.
 - Accessible Wellness Trails: ADA-compliant trails designed for mindful walking, incorporating labyrinths, reflective pools, and sensory gardens.
 - Meditation Loop: A tranquil walking loop with passive signs or phrases reinforcing the connection between nature and inner peace, enhancing mindfulness through subtle, reflective guidance.
 - Serenity Line -- A juxtaposition of the path's structured, linear design against the surrounding natural landscape, evoking a deep sense of calm and tranquility. The contrast between the straight, clear path and the organic elements of nature enhances the sense of serenity, guiding visitors toward stillness and reflection as they approach the bay.

Stakeholder Alignment: This concept aligns with stakeholder priorities by focusing on accessible, passive engagement with nature, promoting wellness and mindfulness through low-impact, contemplative spaces. By integrating features such as the Environmental Overlook, the design enhances the visitor experience while prioritizing the preservation of natural areas like Loden Pond. These thoughtful additions allow for peaceful observation and reflection, supporting the park's conservation goals and aligning with the broader vision of maintaining the park



Concept 2

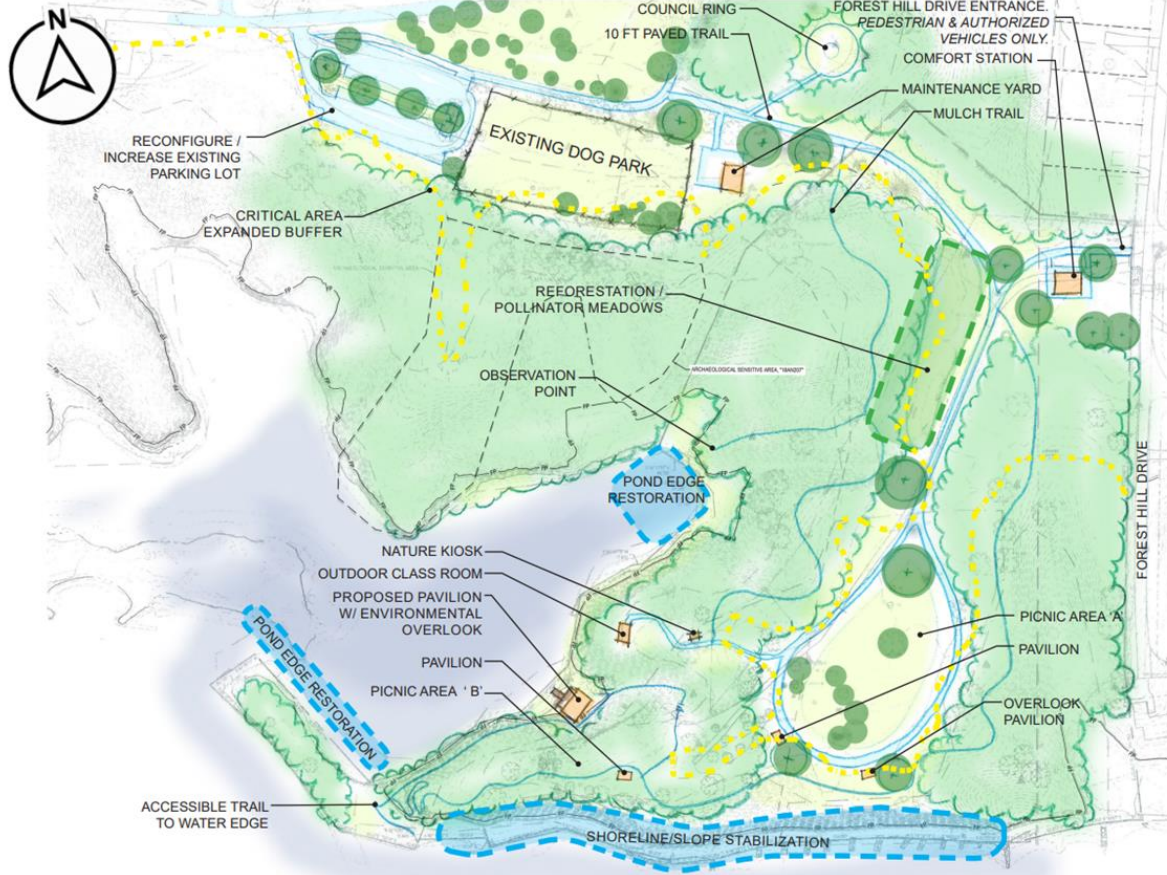


Objective: To celebrate the rich history and cultural heritage of Quiet Waters Park through art and historical interpretation, making it a hub for cultural engagement in a natural setting.
Key Features:

- Cultural Heritage Trails: trails that highlight the historical significance of the land, featuring plaques, art installations, and reconstructed historical sites that tell the story of the park's evolution from farmland to a public space.
- Sculpture Garden: Expanding the park's existing sculpture program by creating a dedicated sculpture garden that features works inspired by the park's history and natural environment.
- Art @ the Park: Proposed Large Pavilion to be include in the annual Art @ the Park event
- Boat House Learning Lodge: repurposed historical boat repair building, into an educational hub where visitors can explore the area's heritage and engage with interactive exhibits. It offers both hands-on learning opportunities and passive exhibits, connecting the history of Quiet Waters Park to its current environmental and conservation efforts.
- Skywatch Grove is an inviting, open clearing surrounded by trees that frame the sky above, offering visitors a chance to pause and observe the natural world.
- The Woodland Studio is an outdoor arts and crafts space nestled in a shaded part of the woods, offering tables where visitors can create art in a peaceful, natural setting. Nearby, the Crafting Cabin—a repurposed maintenance shack—provides storage for art supplies and serves as a hub for hands-on projects during workshops, as well as passive learning through small exhibits.

Stakeholder Alignment: This concept aligns with stakeholder priorities by focusing on education and conservation through the Cultural Heritage Trails and Boat House Learning Lodge, expanding cultural engagement via the Sculpture Garden and Art @ the Park Pavilion, and promoting low-impact, creative experiences with Skywatch Grove and the Woodland Studio, all while preserving the park's natural beauty.

Concept 3



Objective: Create a sanctuary focused on wildlife protection and habitat restoration, with an emphasis on educational outreach to promote environmental stewardship. This concept prioritizes passive interaction with sensitive ecosystems like Loden Pond, preserving the area for conservation while providing educational opportunities for visitors..

Key Features:
Protected Habitat Zones: Designated areas near Harness Creek and the South River where human activity is minimized, including observation platforms for birdwatching and wildlife viewing. These zones ensure passive, controlled access to sensitive ecosystems, promoting wildlife conservation.

- **Native Plant Restoration:** Large-scale removal of invasive species and the reintroduction of native plants, with interpretive signage and guided tours. These efforts educate visitors on the importance of biodiversity and habitat restoration while keeping human impact low.
- **Wetland Restoration:** Restored wetland areas with boardwalks and interactive exhibits that educate visitors on wetlands' roles in flood control and biodiversity. The boardwalks provide passive, low-impact access to these sensitive areas without disturbing the habitat.
- **Sustainable Picnic Areas:** Eco-friendly picnic spots integrated into the natural landscape, surrounded by native plants that support pollinators. These areas provide opportunities for visitors to enjoy the outdoors while maintaining a focus on sustainability and conservation.
- **Reforestation and Pollinator Meadows:** Opportunities for reforestation or the development of natural pollinator meadows along the main trails, enhancing biodiversity and offering visitors the chance to interact with nature in a passive, educational way.

Stakeholder Alignment: This concept meets stakeholders' priorities of sustainability, conservation, and education by focusing on habitat restoration, accessible educational opportunities, and low-impact visitor experiences.

QUIET WATERS RETREAT | MASTER PLAN

OPTION C: WILDLIFE SANCTUARY / HABITAT RESTORATION

ANNAPOLIS, MARYLAND

A720053400

OCTOBER 2024



Next Steps

STAKEHOLDER PROCESS

- Review Concepts and Bring to Community
- Stakeholder Meeting #3: December 7, 2024
- Discussion/consensus on unified concept

Next Steps

STAKEHOLDER PROCESS

- TranSystems to prepare conceptual Master Plan
- Stakeholder Meeting #4: TBD
 - notes, conceptual Master Plan, and answers to outstanding questions will be emailed in advance of the meeting. Please be prepared to discuss.
- Consensus on draft Master Plan

Next Steps

PUBLIC PROCESS

- Publish draft Master Plan based on the results of Stakeholder process
- Present draft Master Plan at in-person Public Meeting
 - Mailing to neighbors within 300 ft of the park's boundary (OPZ guidelines)
 - Post notice on DRP website, social media, and weekly newsletter
 - CE's office and County Council members post the notice in their newsletters
 - Ask Stakeholders to publicize the meeting in their newsletters and social media
- Public comment period (min. 30 days)
- DRP review of public comments and input
- Final Master Plan

Questions

