

2024

# Apartment Study

Anne Arundel County

Office of Planning and Zoning

Planning Division

Research and GIS Section

November 2024



## **Contents**

Executive Summary	2
Introduction	2
Background and Assumptions	3
Number, Type, and Location of Apartment Units	3
Vacancy	9
Affordability	12
Conclusion	16

## Executive Summary

This is a study of apartment complexes in Anne Arundel County in 2024. The 2024 Apartment Study includes a total of 36,588 units, including an estimated 5,867 units in 40 apartment complexes that are considered affordable or a combination of market rate and affordable units. Apartments in Anne Arundel County are clustered within and near the Annapolis, Glen Burnie, and Odenton zip codes. A total of 86% of the apartment units within the County are one or two bedroom units.

Based on the Apartments.com database, the vacancy rate for the County is 6.97%, which is higher than in 2022 (3.88%), but closer to the 2020 vacancy rate (6.00%). Vacancy rates and rental rates vary from one area to another within the County. Rental rates slightly increased across the County since 2022, but increased sharply since 2020. In 2020, 41% of all units were \$1,600 or more per month, while in 2022, 81% of all units were \$1,600 or more per month. In 2024, 84% of all units were \$1,600 or more per month.

## Introduction

The Anne Arundel County Office of Planning and Zoning (OPZ) conducted previous apartment surveys in 1990, 1992, 1994, 1996, 1999, 2001, 2007, 2009, 2018, 2020, and 2022. Until the 2018 study, these studies focused on apartment complexes that included more than 10 units and was based on a survey that was filled out by property managers or owners. A new methodology was used starting with the 2018 report. In 2018, the data was collected from the Anne Arundel County Department of Inspections and Permits “Application for Operating License for Multiple Dwelling or Rooming House” forms. This is a more efficient and accurate way to collect data about apartments and allows us to gather data about apartment complexes smaller than 10 units.

The 2020 update of the report built on the 2018 report and continued to use the Anne Arundel County Department of Inspections and Permits “Application for Operating License for Multiple Dwelling or Rooming House” forms. In addition, OPZ incorporated a new source of data, the CoStar database, which provides data to the website Apartments.com. Although the CoStar data does not include all of the smaller apartment complexes, it is a useful dataset to validate the County’s data for larger apartment complexes and adds to the completeness of the dataset by including an inventory of apartments in the City of Annapolis. It also provides valuable data about rental costs and vacancy rates by apartment complex.

The 2022 and 2024 apartment studies used the same data sources as the 2020 report, focusing on updates since the publication of the 2022 report. It presents data and information about apartments only. It is not a complete inventory of all multifamily developments within Anne Arundel County. Multifamily residential land use can be defined as a building that contains multiple dwelling units, either owned by a single owner or multiple owners. These can be condominiums or apartments. The difference between apartments and condominiums is that apartment units are owned by a single owner whereas condominium units are individually owned.

This report summarizes the number and type of existing apartment units within the County. Where available, rental rates are analyzed and reported. This information will be used in

various studies and analyses by OPZ as a source of information to more accurately account for all households within the County and subareas of the County.

## Background and Assumptions

The 2024 Apartment Study analyzes and summarizes data from the Anne Arundel County Department of Inspections and Permits “Application for Operating License for Multiple Dwelling or Rooming House” forms and the Apartments.com dataset from the County’s subscription to CoStar. Data in this report are updated as of October 2024 (CoStar) and October 2024 (I&P form). No telephone or email surveys were performed for this study.

The Apartments.com dataset was used to identify apartments within the City of Annapolis. The Anne Arundel County Office of Inspections and Permits does not have jurisdiction for apartment licensing in the City, so the County does not have detailed information about apartments within the City. There may be some smaller apartment complexes within Annapolis that are missed in this report.

The Apartments.com database includes information on rental costs, affordable units, and vacancy rates. It helped OPZ verify locations of apartments where the Inspections & Permits address information was inaccurate or not in an appropriate form for geocoding. The Apartments.com data does not include many smaller apartment complexes that the Inspections and Permits data includes. In order to use both data sources to their full potential without leaving valuable information out of the study or double counting, a crosswalk table was created to combine the datasets and use a unique identifier between the two datasets to relate them. When describing total apartment units by zip code and zoning district, the County Inspections & Permits dataset was used for the County and the Apartments.com dataset was used for the municipal area of the City of Annapolis. When summarizing rental cost data, affordability data, and vacancy rates, the Apartments.com dataset was used for the entire County, including the City of Annapolis.

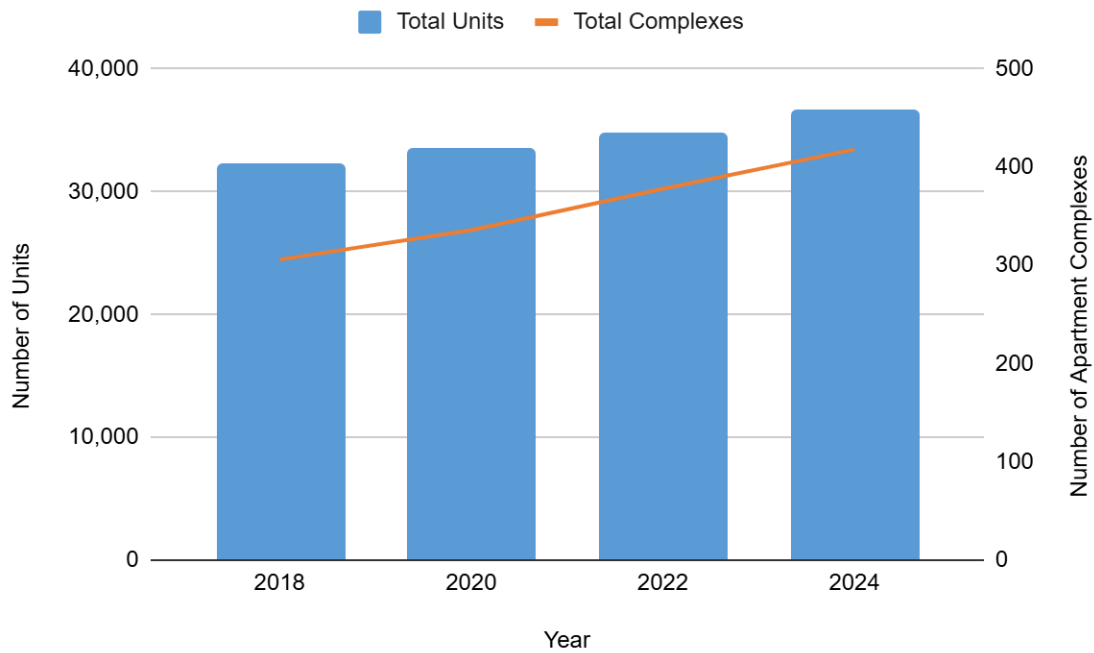
References to locations are based on census zip code zones. In particular, when Laurel is referenced in this report, it is only the portion of Laurel located in Anne Arundel County. The incorporated City of Laurel is in Prince George’s County. Both Annapolis and Glen Burnie have multiple zip codes. Some Annapolis zip codes contain land areas within both the City of Annapolis and Anne Arundel County.

## Number, Type, and Location of Apartment Units

There are approximately 36,588 apartment units in Anne Arundel County, within 418 complexes. In an analysis by zip code areas, the Glen Burnie zip codes have the most units (11,129), followed by the Annapolis zip codes (8,873). These two areas are home to approximately 55% of the total apartment units in Anne Arundel County. Odenton, Hanover, Laurel, Severn, and Pasadena zip codes also have significant numbers of apartments. Several rural areas are listed in the dataset, primarily because of small apartment houses or complexes within these areas. Table 1 and Map 1 summarize these data.

The total number of apartment units included in this report has increased since 2018. The total number of apartment units increased by 14% from 32,128 in 2018 to 36,588 in 2024. The number of apartment complexes has increased by 37% from 302 in 2018 to 418 in 2024. Since the last report, there have been several new large apartment complexes constructed in the Annapolis, Laurel, and Severn areas. Chart 1 illustrates these trends.

**Chart 1 – Total Apartment Units and Complexes, 2018 - 2024**



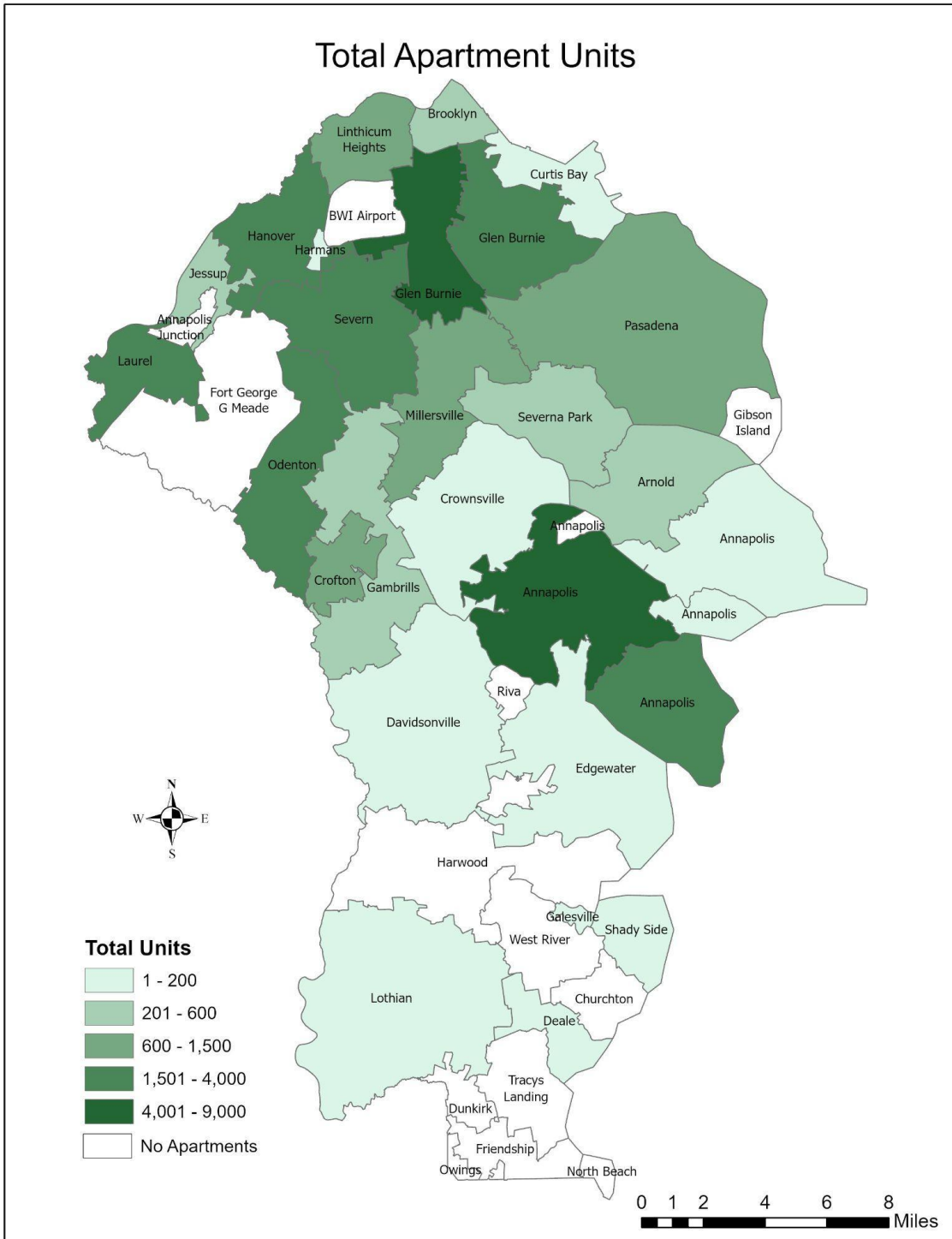
Source: Anne Arundel Department of Inspections and Permits and CoStar (Apartments.com)

**Table 1. Total Units by Location, 2024**

<b>City/Zip Code</b>	<b>Number of Apartment Complexes</b>	<b>Total Apartments</b>	<b>Percent of Total Apartment Units</b>
<b>GLEN BURNIE</b>	<b>109</b>	<b>11,129</b>	<b>30.42%</b>
21060	31	2,589	7.08%
21061	78	8,540	23.34%
<b>ANNAPOLIS</b>	<b>88</b>	<b>8,873</b>	<b>24.25%</b>
21401	62	5,471	14.95%
21402	3	165	0.45%
21403	18	3,052	8.34%
21409	5	185	0.51%
<b>ODENTON</b>	<b>22</b>	<b>3,899</b>	<b>10.66%</b>
<b>LAUREL</b>	<b>8</b>	<b>2,503</b>	<b>6.84%</b>
<b>HANOVER</b>	<b>7</b>	<b>2,248</b>	<b>6.14%</b>
<b>SEVERN</b>	<b>13</b>	<b>1,868</b>	<b>5.11%</b>
<b>PASADENA</b>	<b>31</b>	<b>1,311</b>	<b>3.58%</b>
<b>LINTHICUM HEIGHTS</b>	<b>18</b>	<b>997</b>	<b>2.72%</b>
<b>CROFTON</b>	<b>4</b>	<b>946</b>	<b>2.59%</b>
<b>MILLERSVILLE</b>	<b>4</b>	<b>604</b>	<b>1.65%</b>
<b>GAMBRILLS</b>	<b>4</b>	<b>554</b>	<b>1.51%</b>
<b>BROOKLYN</b>	<b>57</b>	<b>486</b>	<b>1.33%</b>
<b>JESSUP</b>	<b>5</b>	<b>383</b>	<b>1.05%</b>
<b>SEVERNA PARK</b>	<b>12</b>	<b>270</b>	<b>0.74%</b>
<b>ARNOLD</b>	<b>4</b>	<b>263</b>	<b>0.72%</b>
<b>EDGEWATER</b>	<b>9</b>	<b>156</b>	<b>0.43%</b>
<b>CURTIS BAY</b>	<b>9</b>	<b>48</b>	<b>0.13%</b>
<b>GALESVILLE</b>	<b>3</b>	<b>12</b>	<b>0.03%</b>
<b>HARMANS</b>	<b>3</b>	<b>12</b>	<b>0.03%</b>
<b>CROWNSVILLE</b>	<b>3</b>	<b>11</b>	<b>0.03%</b>
<b>SHADY SIDE</b>	<b>2</b>	<b>7</b>	<b>0.02%</b>
<b>LOTHIAN</b>	<b>1</b>	<b>4</b>	<b>0.01%</b>
<b>DAVIDSONVILLE</b>	<b>1</b>	<b>2</b>	<b>0.01%</b>
<b>DEALE</b>	<b>1</b>	<b>2</b>	<b>0.01%</b>
<b>Grand Total</b>	<b>418</b>	<b>36,588</b>	<b>100%</b>

Source: Anne Arundel Department of Inspections and Permits and CoStar (Apartments.com)

# Map 1



Source: Anne Arundel Department of Inspections and Permits and CoStar (Apartments.com)

Table 2 describes the distribution of apartment complexes and units by Anne Arundel County zoning districts. It does not include detailed zoning districts within the City of Annapolis. Within the County, more than half of the apartment units are within the R15 and R22 Residential Zoning districts. Fourteen percent of all apartment units are located within the City of Annapolis. There are also many mixed use or commercial zoning districts that contain apartment housing units.

A common way to look at the types of apartments in a community is through the number of bedrooms per apartment unit. This is one of the questions asked in the Inspections & Permits questionnaire and is a piece of information provided by the apartments.com data. In this case, the Inspections & Permits data were used for most apartments in the County and Apartments.com was used for the City of Annapolis and several newer apartment complexes in the County that were not included in the I&P data. Of the total apartment complexes in the County (including Annapolis), 23 complexes were unable to be included in this total. They failed to report on the type of units that are within the complex in the Inspections & Permits form and there was no information about this in the Apartments.com dataset. The Apartments.com dataset lists a percentage of the total units that are in each size/type category by complexes. These percentages were converted to the number of units and included in the totals for the City of Annapolis. The Apartments.com categories match with the County's I&P form, so the data can be summarized for all apartment complexes in the County and City of Annapolis. Table 3 illustrates that the vast majority of the apartments in Anne Arundel County are one and two-bedroom units.



**Table 2. Total Units by Zoning District, 2024**

<b>Zoning District</b>	<b>Number of Apartment Complexes</b>	<b>Total Apartment Units</b>	<b>Percent of Total Apartment Units</b>
R15 Residential	84	14,657	40.06%
City of Annapolis	65	5,151	14.08%
R22 Residential	20	4,961	13.56%
MXD-E Mixed Use Employment	5	1,665	4.55%
TC Town Center	9	1,643	4.49%
R5 Residential	106	1,093	2.99%
OTC-C Odenton Town Center Core	5	1,068	2.92%
C2 Commercial - Office	10	914	2.50%
R10 Residential	7	842	2.30%
C3 Commercial - General	21	836	2.28%
R2 Residential	24	722	1.97%
MXD-T Mixed Use Transit	2	694	1.90%
W1 Industrial Park	3	492	1.34%
OTC-E Odenton Town Center East Odenton Village Mix	3	403	1.10%
MXD-R Mixed Use Residential	2	343	0.94%
MXD-C Mixed Use Commercial	1	298	0.81%
OTC-T Odenton Town Center Historic	2	273	0.75%
R1	4	169	0.46%
R1 Residential	10	132	0.36%
C1 Commercial - Local	16	110	0.30%
OTC-FM Odenton Town Center Fort Meade Business Mix	3	59	0.16%
C4 Commercial - Highway	4	27	0.07%
RLD Residential Low Density	5	16	0.04%
W2 Industrial - Light	3	12	0.03%
MA2 Light Commercial Marina	1	2	0.01%
MB General Commercial Marina	1	2	0.01%
MC Heavy Commercial Marina	1	2	0.01%
RA Rural Agricultural	1	2	0.01%
<b>Grand Total</b>	<b>418</b>	<b>36,588</b>	<b>100%</b>

Source: Anne Arundel Department of Inspections and Permits and CoStar (Apartments.com)

**Table 3. Number of Units per Floor-Plan**

<b>Floor Plan</b>	<b>Number of Units</b>	<b>Percent of Total</b>
Efficiency Units	963	3%
One Bedroom Units	13,620	38%
Two Bedroom Units	17,139	48%
Three Bedroom Units	4,166	12%
Four + Bedroom Units	82	0.2%
<b>Total</b>	<b>35,970</b>	<b>100%</b>

Source: Anne

Department of Inspections and Permits and CoStar (Apartments.com)

Arundel

## Vacancy

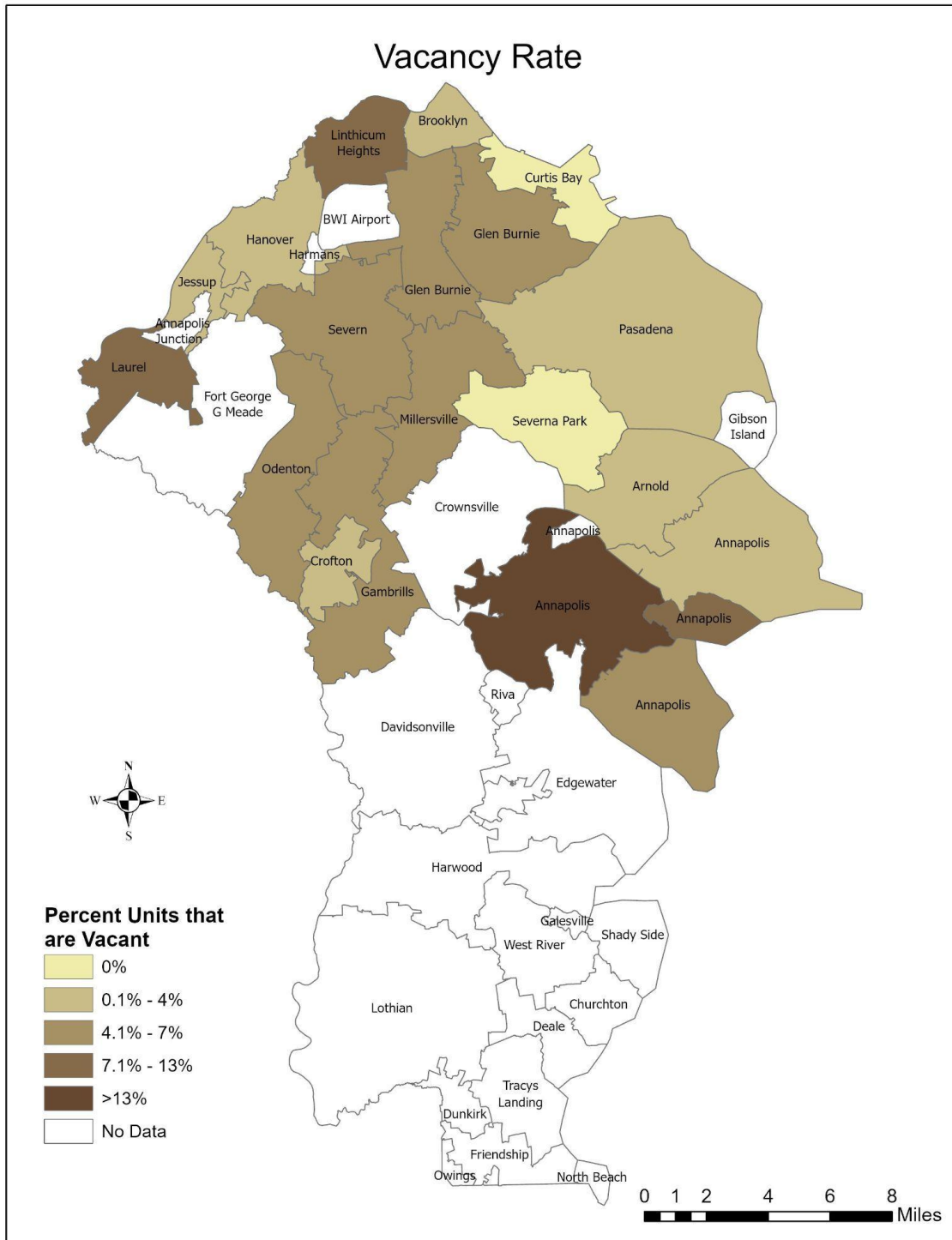
The best source of information about vacancy rates within apartment complexes is the Apartments.com dataset. It reports the percentage of each apartment complex that is vacant. This allowed OPZ to calculate the approximate number of vacant units per complex and total that information by zip code. The vacancy data in the Apartments.com database are incomplete. Out of the 233 apartment complexes in the database, only 186 (32,912 units) of them reported a value in the percent vacancy field. The complexes with null values in this field were not included in this part of the analysis. The countywide vacancy rate is approximately 7.35%. Laurel has the highest vacancy rate, followed by the Annapolis zip codes. There are newer apartment complexes in these areas that show higher vacancy rates. The higher vacancy rate in the 21401 zip code in Annapolis is a result of Avalon Annapolis, a new apartment complex with 508 units. This complex was finished in 2024 and shows a vacancy rate of 92%. The Elms at the Refuge apartment complex (330 units) in Laurel was also built in 2024 and shows a 40% vacancy rate.

**Table 4. Vacant Units**

<b>City/Zip Code</b>	<b>Vacant Apartment Units</b>	<b>Total Apartment Units</b>	<b>Vacancy Rate</b>
<b>GLEN BURNIE</b>	<b>613</b>	<b>10182</b>	<b>6.02%</b>
21060	164	2226	7.37%
21061	449	7956	5.64%
<b>ANNAPOLIS</b>	<b>859</b>	<b>7576</b>	<b>11.34%</b>
21401	681	4737	14.38%
21402	2	25	8.00%
21403	174	2636	6.60%
21409	2	178	1.12%
<b>ODENTON</b>	<b>200</b>	<b>3671</b>	<b>5.45%</b>
<b>LAUREL</b>	<b>301</b>	<b>2503</b>	<b>12.03%</b>
<b>HANOVER</b>	<b>92</b>	<b>2248</b>	<b>4.09%</b>
<b>SEVERN</b>	<b>126</b>	<b>1841</b>	<b>6.84%</b>
<b>PASADENA</b>	<b>38</b>	<b>1241</b>	<b>3.06%</b>
<b>CROFTON</b>	<b>42</b>	<b>946</b>	<b>4.44%</b>
<b>LINTHICUM HEIGHTS</b>	<b>85</b>	<b>942</b>	<b>9.02%</b>
<b>MILLERSVILLE</b>	<b>11</b>	<b>244</b>	<b>4.51%</b>
<b>GAMBRILLS</b>	<b>30</b>	<b>544</b>	<b>5.51%</b>
<b>JESSUP</b>	<b>16</b>	<b>364</b>	<b>4.40%</b>
<b>BROOKLYN</b>	<b>3</b>	<b>336</b>	<b>0.87%</b>
<b>ARNOLD</b>	<b>11</b>	<b>257</b>	<b>4.28%</b>
<b>SEVERNA PARK</b>	<b>0</b>	<b>124</b>	<b>0.00%</b>
<b>CURTIS BAY</b>	<b>0</b>	<b>7</b>	<b>0.00%</b>
<b>Grand Total</b>	<b>2,427</b>	<b>33,026</b>	<b>7.35%</b>

Source: CoStar (Apartments.com)

# Map 2



Source: CoStar (Apartments.com)

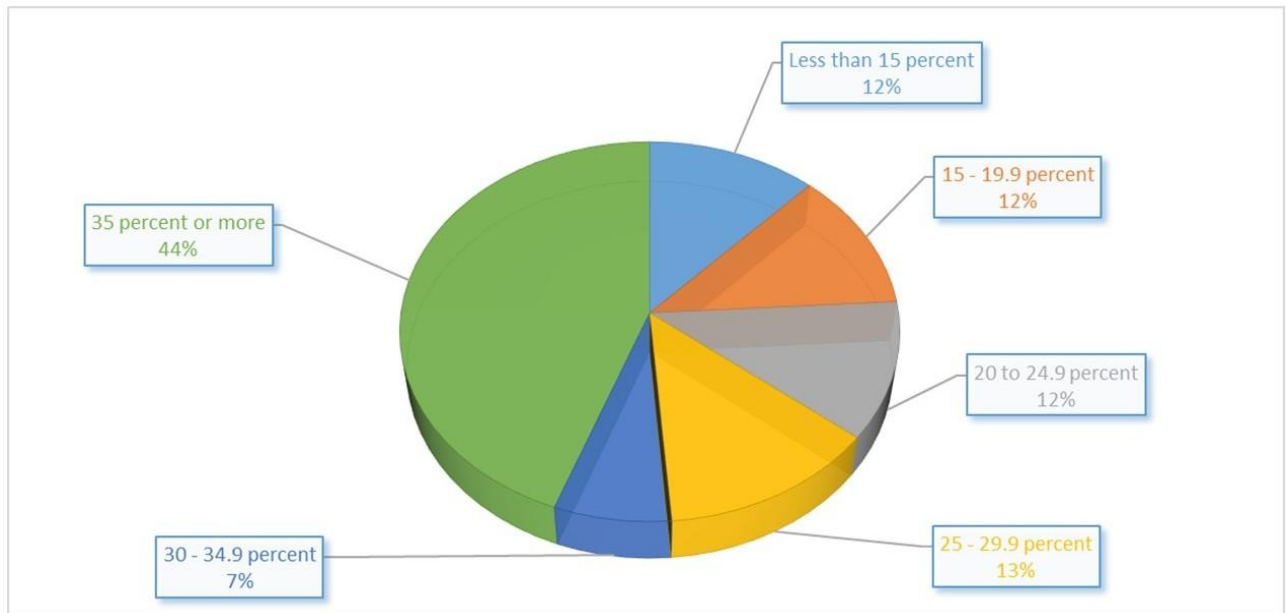
## Affordability

In Anne Arundel County, the median household income is \$103,225 (+/- \$1,817) (2016 – 2020, US Census Bureau, American Community Survey). This is approximately \$16,000 more than the state median \$87,063 (+/- \$391). The US Census Bureau estimates that 37% (+/-4.1) of the County’s renting population spends 35% or more of their income on rent and utilities (2016 - 2020 5-year estimates, US Census Bureau, American Community Survey).

According to the 2020 American Community Survey 5-Year Estimates, 3.8% (+/-0.4) of families in the County have incomes below the poverty level (2016 - 2020 5-year estimates, US Census Bureau, American Community Survey).

Chart 2 shows that nearly half (46%) of all renters in Anne Arundel County spend at least 30% of their gross income on housing costs. This is slightly lower than the statewide total of 49%.

**Chart 2 – Gross Rent as a Percentage of Household Income**



Source: U.S. Census Bureau, 2023 American Community Survey One-Year Estimates

Table 5 shows the number of units with average rent costs by community in Anne Arundel County. This information is based on average rental costs by apartment complex and is from the Apartments.com database. It shows that more than half of the total apartment units in the County have an average rental rate of between \$1,800 and \$2,400 per month. The data also show that the Annapolis zip codes (including areas outside the municipal boundary of Annapolis) have the most apartment units in the higher rental rate categories, followed by Hanover and Odenton. There is a significant increase in rental rates across the County. In 2020, 41% of all units were \$1,600 or more per month, while in 2024, 83% of all units were \$1,600 or more per month.

The Apartments.com database also includes information about affordable housing and reports the number of units per apartment complex that are considered affordable housing. It does not include complexes that are owned by the Housing Authority of the City of Annapolis.

Approximately 11% of the 35,053 apartment units (total units from Apartments.com) are considered affordable and 6% of the total apartment units represent a combination of market rate and affordable housing. Apartments that are considered affordable are either rent controlled, rent restricted, or rent subsidized. The information in Table 6 summarizes these data by city/zip code. Many of the communities that show a high percentage of affordable housing units are a result of apartment complexes that include both market rate and affordable housing. The dataset does not give an indication of the percentage of each of these complexes that are market rate versus affordable.

**Table 5. Percent of Units and Average Rental Cost by Location**

City/Zip Code	Less than \$1,200	\$1,201 - \$1,400	\$1,401 - \$1,600	\$1,601 - \$1,800	\$1,801 - \$2,000	\$2,001 - \$2,200	\$2,201 - \$2,400	More than \$2,400
<b>GLEN BURNIE</b>	<b>587</b>	<b>1,872</b>	<b>3,605</b>	<b>1,806</b>	<b>2,027</b>	<b>4</b>	<b>431</b>	<b>0</b>
21060	0	1,099	132	263	506	4	208	0
21061	587	773	3,473	1,543	1,521	0	223	0
<b>ANNAPOLIS</b>	<b>563</b>	<b>340</b>	<b>841</b>	<b>828</b>	<b>550</b>	<b>1,263</b>	<b>2,013</b>	<b>1,353</b>
21401	563	288	721	50	2	573	1,546	1,243
21402	0	52	120	608	548	690	467	106
21403	0	0	0	0	0	0	0	0
21409	0	0	0	170	0	0	0	4
<b>BROOKLYN</b>	<b>0</b>	<b>90</b>	<b>0</b>	<b>0</b>	<b>230</b>	<b>0</b>	<b>0</b>	<b>0</b>
<b>PASADENA</b>	<b>0</b>	<b>0</b>	<b>0</b>	<b>0</b>	<b>336</b>	<b>0</b>	<b>0</b>	<b>0</b>
<b>ODENTON</b>	<b>0</b>	<b>48</b>	<b>0</b>	<b>78</b>	<b>776</b>	<b>513</b>	<b>2,256</b>	<b>0</b>
<b>LAUREL</b>	<b>0</b>	<b>0</b>	<b>0</b>	<b>606</b>	<b>471</b>	<b>426</b>	<b>335</b>	<b>665</b>
<b>HANOVER</b>	<b>0</b>	<b>0</b>	<b>0</b>	<b>0</b>	<b>0</b>	<b>233</b>	<b>1,299</b>	<b>716</b>
<b>SEVERN</b>	<b>0</b>	<b>6</b>	<b>200</b>	<b>498</b>	<b>198</b>	<b>639</b>	<b>0</b>	<b>300</b>
<b>CROFTON</b>	<b>0</b>	<b>0</b>	<b>0</b>	<b>0</b>	<b>258</b>	<b>588</b>	<b>100</b>	<b>0</b>
<b>LINTHICUM HEIGHTS</b>	<b>0</b>	<b>0</b>	<b>0</b>	<b>0</b>	<b>240</b>	<b>694</b>	<b>0</b>	<b>0</b>
<b>MILLERSVILLE</b>	<b>0</b>	<b>0</b>	<b>0</b>	<b>0</b>	<b>600</b>	<b>0</b>	<b>0</b>	<b>0</b>
<b>GAMBRILLS</b>	<b>0</b>	<b>0</b>	<b>0</b>	<b>0</b>	<b>0</b>	<b>0</b>	<b>0</b>	<b>544</b>
<b>JESSUP</b>	<b>0</b>	<b>0</b>	<b>0</b>	<b>0</b>	<b>0</b>	<b>0</b>	<b>364</b>	<b>0</b>
<b>SEVERNA PARK</b>	<b>103</b>	<b>0</b>	<b>0</b>	<b>0</b>	<b>0</b>	<b>0</b>	<b>0</b>	<b>0</b>
<b>ARNOLD</b>	<b>0</b>	<b>0</b>	<b>0</b>	<b>0</b>	<b>0</b>	<b>120</b>	<b>137</b>	<b>0</b>
<b>EDGEWATER</b>	<b>0</b>	<b>102</b>	<b>0</b>	<b>0</b>	<b>0</b>	<b>0</b>	<b>0</b>	<b>0</b>
<b>CURTIS BAY</b>	<b>0</b>	<b>0</b>	<b>0</b>	<b>0</b>	<b>0</b>	<b>0</b>	<b>0</b>	<b>0</b>
<b>HARMANS</b>	<b>0</b>	<b>0</b>	<b>0</b>	<b>0</b>	<b>0</b>	<b>0</b>	<b>0</b>	<b>0</b>
<b>CROWNSVILLE</b>	<b>0</b>	<b>0</b>	<b>0</b>	<b>0</b>	<b>0</b>	<b>0</b>	<b>0</b>	<b>0</b>
<b>GALESVILLE</b>	<b>0</b>	<b>0</b>	<b>0</b>	<b>0</b>	<b>0</b>	<b>0</b>	<b>0</b>	<b>0</b>
<b>SHADY SIDE</b>	<b>0</b>	<b>0</b>	<b>0</b>	<b>0</b>	<b>0</b>	<b>0</b>	<b>0</b>	<b>0</b>
<b>LOTHIAN</b>	<b>0</b>	<b>0</b>	<b>0</b>	<b>0</b>	<b>0</b>	<b>0</b>	<b>0</b>	<b>0</b>
<b>Grand Total</b>	<b>1,253</b>	<b>2,458</b>	<b>4,646</b>	<b>3,816</b>	<b>5,686</b>	<b>4,480</b>	<b>6,935</b>	<b>3,578</b>
<b>Percentage of Total</b>	<b>4%</b>	<b>8%</b>	<b>16%</b>	<b>13%</b>	<b>19%</b>	<b>15%</b>	<b>24%</b>	<b>12%</b>

Source: CoStar (Apartments.com)

**Table 6. Total Units of Affordable Housing**

<b>City/Zip Code</b>	<b>Affordable</b>	<b>Market/Affordable</b>	<b>Total Apartments</b>	<b>Percent Affordable</b>
<b>GLEN BURNIE</b>	<b>623</b>	<b>612</b>	<b>10,465</b>	<b>12%</b>
21060	192	150	2,226	15%
21061	431	462	8,239	11%
<b>ANNAPOLIS</b>	<b>2,194</b>	<b>398</b>	<b>8,770</b>	<b>30%</b>
21401	1,412	300	5,375	32%
21402	0	0	165	0%
21403	612	98	3,052	23%
21409	170	0	178	96%
<b>ODENTON</b>	<b>136</b>	<b>258</b>	<b>3,759</b>	<b>10%</b>
<b>HANOVER</b>	<b>0</b>	<b>0</b>	<b>2,248</b>	<b>0%</b>
<b>LAUREL</b>	<b>0</b>	<b>806</b>	<b>2,503</b>	<b>32%</b>
<b>SEVERN</b>	<b>200</b>	<b>0</b>	<b>1,841</b>	<b>11%</b>
<b>PASADENA</b>	<b>156</b>	<b>0</b>	<b>1,241</b>	<b>13%</b>
<b>LINTHICUM HEIGHTS</b>	<b>0</b>	<b>0</b>	<b>942</b>	<b>0%</b>
<b>CROFTON</b>	<b>100</b>	<b>182</b>	<b>946</b>	<b>30%</b>
<b>MILLERSVILLE</b>	<b>0</b>	<b>0</b>	<b>600</b>	<b>0%</b>
<b>GAMBRILLS</b>	<b>0</b>	<b>0</b>	<b>544</b>	<b>0%</b>
<b>JESSUP</b>	<b>0</b>	<b>0</b>	<b>364</b>	<b>0%</b>
<b>SEVERNA PARK</b>	<b>103</b>	<b>0</b>	<b>124</b>	<b>83%</b>
<b>ARNOLD</b>	<b>0</b>	<b>0</b>	<b>257</b>	<b>0%</b>
<b>EDGEWATER</b>	<b>102</b>	<b>0</b>	<b>102</b>	<b>100%</b>
<b>CURTIS BAY</b>	<b>0</b>	<b>0</b>	<b>7</b>	<b>0%</b>
<b>BROOKLYN</b>	<b>94</b>	<b>3</b>	<b>340</b>	<b>0%</b>
<b>HARMANS</b>	<b>0</b>	<b>0</b>	<b>0</b>	<b>0%</b>
<b>GALESVILLE</b>	<b>0</b>	<b>0</b>	<b>0</b>	<b>0%</b>
<b>CROWNSVILLE</b>	<b>0</b>	<b>0</b>	<b>0</b>	<b>0%</b>
<b>SHADY SIDE</b>	<b>0</b>	<b>0</b>	<b>0</b>	<b>0%</b>
<b>LOTHIAN</b>	<b>0</b>	<b>0</b>	<b>0</b>	<b>0%</b>
<b>DEALE</b>	<b>0</b>	<b>0</b>	<b>0</b>	<b>0%</b>
<b>Grand Total</b>	<b>3,708</b>	<b>2,259</b>	<b>35,053</b>	

Source: Anne Arundel Department of Inspections and Permits (Housing Commission owned complexes only) and CoStar (Apartments.com)



## Conclusion

The 2024 Apartment Study includes a total of 36,588 units within 418 apartment complexes. Apartments in Anne Arundel County are clustered within and near the population centers of Annapolis and Glen Burnie, and in the area along the Baltimore-Washington corridor. The total number of apartment units included in this report has increased since 2022, representing a 5% increase. Since 2022, the vacancy rate in the County has risen nearly 90% from 3.88% to 7.37%. There is a significant increase in rental rates across the county. In 2020, 41% of all units were \$1,600 or more per month, while in 2024, 83% of all units were \$1,600 or more per month.

These data will be updated continually based on “Application for Operating License for Multiple Dwelling or Rooming House” forms and CoStar (Apartments.com). OPZ will periodically update this report using these datasets as necessary and will use the information to accurately reflect multi-family residential units in the County.

Facility Name	Facility Address	Facility City	Facility Zip	Number of Apartment	
				Units	Zoning District
Chesapeake Glen Apartments	8035 Greenleaf Terrace	Glen Burnie	21061	799	R22 Residential
The Villages at Marley Station	7807 Winborne Dr.	Glen Burnie	21060	757	R15 Residential
Lake Village Apartments	8001 Laketowne Court	Severn	21144	639	R15 Residential
Nautilus Point	655 Americana Dr	Annapolis	21403	608	City of Annapolis
Harbour Gates Apartments	2001 Harbour Gates Drive	Annapolis	21401	516	R22 Residential
Southgate Apartments	362 Klagg Court, # 201	Glen Burnie	21061	515	R15 Residential
Avalon Annapolis	2500 Riva Rd	Annapolis	21401	508	TC Town Center
Americana Southdale Apartments	7847 Americana Circle	Glen Burnie	21060	506	R15 Residential
Orchards at Severn	8317 Severn Orchard Circle	Severn	21144	498	R15 Residential
Arbors at Arundel Preserve	2109 Piney Branch Circle	Hanover	21076	496	MXD-E Mixed Use Employment
Hidden Woods Apartments	401E Secluded Post Cir	Glen Burnie	21061	492	R15 Residential
Drexel Park I Apartments	3472 Andrew Ct	Laurel	20724	471	R15 Residential
Camden Russett	8500 Summit View Rd	Laurel	20724	426	R15 Residential
The Point at Crofton	1623 Parkridge Circle	Crofton	21114	406	R22 Residential
The Lodge at Seven Oaks (TGM Odenton LLC)	2027 Odens Station Lane	Odenton	21113	396	R22 Residential
Quiet Waters Landing	1293 Thom Ct	Annapolis	21403	390	City of Annapolis
The Elms at Stoney Run Village	7581 Stoney Run Dr	Hanover	21076	386	R22 Residential
Element	820 Concorde Circle	Linthicum Heights	21090	384	MXD-T Mixed Use Transit
Village Square	8096 Crainmont Drive	Glen Burnie	21061	370	R22 Residential
FLATS 170 AT ACADEMY YARD	8305 Telegraph Rd	Odenton	21113	369	OTC-C Odenton Town Center Core
Woodside Apts	7820 Park West Drive	Glen Burnie	21061	366	R15 Residential
The Elms at Shannon's Glen	7811 Shannon's Glen Dr	Jessup	20794	364	MXD-E Mixed Use Employment

Facility Name	Facility Address	Facility City	Facility Zip	Number of	
				Apartment	Zoning District
				Units	
Tall Oaks	3515 Leslie Way	Laurel	20724	352	R15 Residential
The Willows Apartments	116-B Warwickshire Lane	Glen Burnie	21061	352	R15 Residential
Woodcrest Apts	101 S Charter Road	Glen Burnie	21061	347	R15 Residential
The Ashberry Apartments	8017 Ashberry Lane	Pasadena	21122	336	R15 Residential
Quail Hollow Apts	7930-D Silverleaf Ct.	Glen Burnie	21061	336	R15 Residential
Concord Park at Russett	7903 Orion Circle	Laurel	20724	335	R5 Residential
Cedar Creek Apartments	215 Woodhill Dr.	Glen Burnie	21061	334	R15 Residential
Palisades at Arundel Preserve	7694 Dorchester Blvd	Hanover	21076	330	MXD-E Mixed Use Employment
Elms at The Refuge	3201 Fluvial Ln	Laurel	20724	330	R15 Residential
Serenity Place at Dorsey Ridge	7501 Trafalgar Cir	Hanover	21076	323	C2 Commercial - Office
Regency Club Apts	6001 Heritage Hill Dr	Glen Burnie	21061	316	R15 Residential
Stone Point Apartments	116 Stone Point Drive	Annapolis	21401	312	R2 Residential
Avalon Arundel Crossing Apartments	811 Concorde Circle	Linthicum Heights	21090	310	MXD-T Mixed Use Transit
Bywater Mutual Homes	911 Royal St	Annapolis	21401	308	City of Annapolis
Shelter Cove	537 Tranquil Court	Odenton	21113	300	R15 Residential
Bell Annapolis on West	1901 West St	Annapolis	21401	300	City of Annapolis
The Residences at Sandy Farms	7900 Erin Michele Pky	Severn	21144	300	C3 Commercial - General
Beacon at Waugh Chapel	1433 S. Main Chapel Way	Gambrills	21054	298	MXD-C Mixed Use Commercial
Spa Creek Condominiums	910 Primrose Rd	Annapolis	21403	294	City of Annapolis
LMV Annapolis Holdings, LLC (MARIS)	2445 Holly Avenue	Annapolis	21401	293	TC Town Center
Admiral Farragut	230-A Hilltop Ln	Annapolis	21403	289	City of Annapolis
Glen Ridge Apartments	57 Glen Ridge Rd Apt B1	Glen Burnie	21061	286	R15 Residential

Facility Name	Facility Address	Facility City	Facility Zip	Number of Apartment	
				Units	Zoning District
Annapolis Roads Apartments	1 Eaglewood Rd	Annapolis	21403	282	City of Annapolis
Riverscape Apartments	2600 Midway Branch Drive	Odenton	21113	280	R15 Residential
Seven Oaks Phase I	2100 Sentry Court	Odenton	21113	278	R22 Residential
Tall Pines Apts	7888 Tall Pines Court	Glen Burnie	21061	276	R15 Residential
The Shirley	2005 Town Center Blvd	Odenton	21113	270	OTC-T Odenton Town Center Historic
The Point at Seven Oaks	300 Gatehouse Lane	Odenton	21113	264	R22 Residential
Gateway Landing Apartments	7355 E Furnace Branch Rd	Glen Burnie	21060	263	R15 Residential
Crofton Village Apartments	917 Eastham Ct. #TI	Crofton	21114	258	R15 Residential
Groves at Piney Orchard	2404 Ash Grove Lane	Odenton	21113	258	R15 Residential
Horizon Square	3563 Fort Meade Road	Laurel	20724	254	R22 Residential
Colonial Square Apartments	7779 New York Lane	Glen Burnie	21061	253	R15 Residential
The Elms At Odenton	615 Carlton Otto Ln	Odenton	21113	252	OTC-E Odenton Town Center East Odenton Village Mix
Aventon Annapolis	2553 Riva Rd	Annapolis	21401	250	W1 Industrial Park
Monarch at Waugh Chapel	2614 Smooth Adler Street	Gambrills	21054	246	MXD-R Mixed Use Residential
Novus Odenton Apartments	315 Nevada Ave	Odenton	21113	244	OTC-C Odenton Town Center Core
Residences at Arundel Mills	7789 Arundel Mills Blvd	Hanover	21076	242	MXD-E Mixed Use Employment
Mountain Ridge Apts.	299 Snow Cap Ct	Glen Burnie	21061	240	R15 Residential
Lynn Hill Apartments	418-204 Hillview Drive	Linthicum Heights	21090	240	R15 Residential
The Elms at Old Mill	602 Milldam Street #11	Millersville	21108	240	R15 Residential
Avalon Russett	8185 Scenic Meadows Dr.	Laurel	20724	238	R5 Residential
The Villas at Dorsey Ridge	7405 Windstream Cir	Hanover	21076	238	C2 Commercial - Office
The James	251 Admiral Cochrane Dr	Annapolis	21401	236	W1 Industrial Park

Facility Name	Facility Address	Facility City	Facility Zip	Number of	
				Apartment	Zoning District
				Units	
The Village at Odenton Station	1415 Duckens St	Odenton	21113	235	OTC-C Odenton Town Center Core
The Arundel	7787 Arundel Mills Blvd	Hanover	21076	233	MXD-E Mixed Use Employment
Patapsco Place LLC Woodfall Greens	90 Hammonds Lane	Brooklyn	21225	230	C3 Commercial - General
Ginger Cove	4000 River Crescent Drive	Annapolis	21401	229	R2 Residential
Reggatta Bay	70 Regatta Bay Court	Annapolis	21401	229	C2 Commercial - Office
Islands of Foxchase	208 Somerset Bay Drive	Glen Burnie	21061	223	R15 Residential
Yorktowne Apartments	760 Crucible Ct	Millersville	21108	216	R15 Residential
Annapolis Bay	721 S Cherry Grove Ave	Annapolis	21401	216	City of Annapolis
Cromwell Apartments 3, LLC	8115 Evening Star Drive	Pasadena	21122	216	R10 Residential
Crosswinds Apartments	1903 Towne Center Blvd	Annapolis	21401	215	TC Town Center
The Point at Odenton	322 Baldwin Rd	Odenton	21113	212	OTC-C Odenton Town Center Core
Westwinds Apartments	1029 Spa Rd	Annapolis	21403	210	City of Annapolis
Mariner Bay Towne Centre	1910 Towne Centre Blvd	Annapolis	21401	208	TC Town Center
Creekside Village Apartments	303 Maple Tree Dr	Glen Burnie	21060	208	R10 Residential
GlenView Gardens	7987 NOLPARK CT. #104	Glen Burnie	21061	204	R22 Residential
Quarterfield Crossing	400 Pamela Rd	Glen Burnie	21061	203	R22 Residential
Pinewood Village	7885 Gordon Court	Glen Burnie	21060	200	R15 Residential
Meade Village	1710 Meade Village Circle	Severn	21144	200	R15 Residential
Somerset Woods Townhouse Apts	1833 Richfield Dr	Severn	21144	198	R15 Residential
Bay Ridge Gardens	1 Bens Dr	Annapolis	21403	198	City of Annapolis
Creekstone Village Apts	8115 Evening Star Drive	Pasadena	21122	193	R10 Residential
Stagecoach Apartments	7669 Marcin Drive	Glen Burnie	21061	187	R22 Residential
Fieldstone Farm Apartments	800 Hydric Court	Odenton	21113	187	R15 Residential

Facility Name	Facility Address	Facility City	Facility Zip	Number of Apartment	
				Units	Zoning District
Windbrooke Apartments	7906 Silent Shadow Ct	Glen Burnie	21061	186	R15 Residential
North Forest Apartments	1827 Crofton Parkway	Crofton	21114	182	R22 Residential
The Cove	6533 Cedar Furnace Circle	Glen Burnie	21061	181	R15 Residential
Spa Cove Apartments	1012 Primrose Rd	Annapolis	21403	178	City of Annapolis
Glen Mar Apartments	469 Glen Mar Rd., A-2	Glen Burnie	21061	176	R15 Residential
Claiborne Place Apartments	130 Hearne Rd	Annapolis	21401	175	TC Town Center
Park Glen Apartments	7906 Allard Ct. Suite #102	Glen Burnie	21061	174	R15 Residential
Obery Court	199 Bertina A Nick Way	Annapolis	21401	174	City of Annapolis
College Parkway Place	570 Bellerive Drive, Ste., 109	Annapolis	21409	170	R15 Residential
The Lighthouse	6533 Cedar Furnace Circle	Glen Burnie	21061	168	R15 Residential
Oakridge Manor Apartments	7701 Oakwood Road	Glen Burnie	21061	165	R15 Residential
Admiral Oaks	445 Captains Cir	Annapolis	21401	159	City of Annapolis
Bayshore Landing Apartments	988 Spa Rd	Annapolis	21403	158	City of Annapolis
Cromwell Apartments 2, LLC	8115 Evening Star Dr	Pasadena	21122	156	R10 Residential
Rainbow View Apartments	411-415 Raindrop Ct	Glen Burnie	21061	156	R15 Residential
Freetown Village	7820 Darrell Henry Court	Pasadena	21122	154	R15 Residential
Country Club Apartments	7491 E Furnace Branch Rd	Glen Burnie	21060	150	R15 Residential
Annapolis Gardens	250 Croll Dr	Annapolis	21401	150	City of Annapolis
Point at Harper Mills Apartments	600 Harpers Mill Rd	Millersville	21108	144	R15 Residential
Woodside Gardens	705 Newtowne Dr	Annapolis	21401	144	City of Annapolis
Oakland Hills Apts	114 Oakland Hills Drive	Arnold	21012	137	R15 Residential
Twin Coves Apartments	156 Hammerlee Rd	Glen Burnie	21060	132	R15 Residential
Glen Square	102 N Crain Hwy	Glen Burnie	21061	127	TC Town Center

Facility Name	Facility Address	Facility City	Facility Zip	Number of Apartment	
				Units	Zoning District
Crain Court Apts	216 Crain Court Circle	Glen Burnie	21061	126	R15 Residential
Aquahart Manor Apartments	1020 Cayer Drive	Glen Burnie	21061	124	R15 Residential
Bay Hills Apartments	451 Shore Acres Road	Arnold	21012	120	R15 Residential
The Channel	6533 Cedar Furnace Circle	Glen Burnie	21061	120	R15 Residential
Bay Forest Senior Apartments	930 Bay Forest Ct	Annapolis	21403	120	City of Annapolis
The Gardens of Annapolis	931 Edgewood Rd	Annapolis	21403	106	City of Annapolis
Park View at Severna Park	180 Ritchie Highway	Severna Park	21146	103	R2 Residential
Victoria Park at Egdewater	87 Stewart Drive	Edgewater	21037	102	C3 Commercial - General
Park View at Furnace Branch	7466 Furnace Branch Rd	Glen Burnie	21060	101	C3 Commercial - General
Carlyle Apartments	1668 Carlyle Drive	Crofton	21114	100	R15 Residential
Heritage Overlook	6670 Roberts Court	Glen Burnie	21061	100	R22 Residential
Glen Forest Senior Apartments	7975 Crain Hwy S	Glen Burnie	21061	100	R22 Residential
Allen Apartments	205 Center St	Annapolis	21401	99	City of Annapolis
Lofts at Eastport Landing	915 Chesapeake Ave	Annapolis	21403	98	City of Annapolis
The Current at Watershed	3101 Runnel Ln	Laurel	20724	97	MXD-R Mixed Use Residential
Pinewood East	7900 Benesch Circle	Glen Burnie	21060	90	R15 Residential
Greens at Hammonds Ln	602 Hammond Lane	Brooklyn	21225	90	R5 Residential
The Reserve at Stoney Creek	8003 Cameryn Place	Pasadena	21122	90	R15 Residential
Friendship Station/Odenton Sr.	1212 Odenton Rd	Odenton	21113	88	OTC-E Odenton Town Center East Odenton Village Mix
Brightview Annapolis	1935 Generals Highway	Annapolis	21401	88	R1 Residential
Timothy House & Gardens	29 W Washington St	Annapolis	21401	81	City of Annapolis
Phythian Road	349 Kinkaid Rd	Annapolis	21402	80	R1

Facility Name	Facility Address	Facility City	Facility Zip	Number of Apartment	
				Units	Zoning District
Highland Court Apartments	1221 Scotts Manor Ct.	Odenton	21113	78	R22 Residential
Stoney Creek Phase II	8009 Cameryn Place	Pasadena	21122	76	R15 Residential
Arundel Woods Apartments	403 W. Ordinance Rd	Glen Burnie	21061	72	R15 Residential
Brightview of Severna Park	469 Jumpers Hole Rd	Severna Park	21146	71	R5 Residential
Wiley H. Bates School Apartments	1103 Smithville St	Annapolis	21401	71	City of Annapolis
Village Square Townhouse Apts	8096 Crainmont Drive	Glen Burnie	21061	68	R22 Residential
Odenton Senior Housing II	1208 Odenton Rd	Odenton	21113	63	OTC-E Odenton Town Center East Odenton Village Mix
College Creek	199 Obery St	Annapolis	21401	63	City of Annapolis
Severn Square Apartments	7669 Marcin Drive	Glen Burnie	21061	60	R22 Residential
Sunrise Independent living of severna Park	43 W.Mckinsey Rd	Severna Park	21146	60	R10 Residential
Perry Circle Apartments	349 Kinkaid Rd	Annapolis	21402	60	R1
West Woods Apartments	110 Hearne Court., T2	Annapolis	21401	57	TC Town Center
Old Stage Apartments	7669 Marcin Drive	Glen Burnie	21061	55	R22 Residential
Hammarlee House Apartments	20 Hammarlee Rd	Glen Burnie	21060	55	C2 Commercial - Office
Stoney Hill	500-574 Stoney Hill Ct.	Odenton	21113	55	R22 Residential
Glen Burnie Town Apts	201 Crain Hwy N	Glen Burnie	21061	54	TC Town Center
Conte Lubrano Apartments	130 Lubrano Drive	Annapolis	21401	50	C2 Commercial - Office
Glen Hollow Apartments	8103 # A Glen Hollow Dr	Glen Burnie	21061	49	R15 Residential
Berger Square	1480 Berger St	Odenton	21113	48	OTC-FM Odenton Town Center Fort Meade Business Mix
	316 Burnside St	Annapolis	21403	47	City of Annapolis
Homes at the Glen	73 Juliana Cir E	Annapolis	21401	45	City of Annapolis



Facility Name	Facility Address	Facility City	Facility Zip	Number of Apartment	
				Units	Zoning District
Towne Courts	100 Francis Noel Way	Annapolis	21401	42	City of Annapolis
Marley Meadows Apts	202 Marley Meadow Lane	Glen Burnie	21060	36	R15 Residential
Mayo Apartments	827 Central Avenue E	Edgewater	21037	36	C1 Commercial - Local
Madison Apartments	1000 Madison St	Annapolis	21403	32	City of Annapolis
Wardour Bluffs Apartments	2 S Monroe Rd	Annapolis	21401	27	City of Annapolis
Severn Village	350 Kinkaid Rd	Annapolis	21402	25	R1
	2 Maryland Ave	Annapolis	21401	24	City of Annapolis
	8 Maryland Ave	Annapolis	21401	20	City of Annapolis
	20 Silopanna Rd	Annapolis	21403	20	City of Annapolis
Doll Apartments	1420 Crain Hwy SW	Glen Burnie	21061	16	C4 Commercial - Highway
Thomas Pumphrey House	1730 Pleasantville Drive	Glen Burnie	21061	15	C1 Commercial - Local
East Glen Burnie Plaza	7428 Furnace Branch Rd	Glen Burnie	21060	13	C3 Commercial - General
602 Crain Hwy, LLC	602 Crain Hwy	Glen Burnie	21061	12	C3 Commercial - General
	19-29 Lafayette Ave	Annapolis	21401	12	City of Annapolis
Linden Apartments	2997 Jessup Rd	Jessup	20794	11	R1 Residential
Oakwood Apts	21 Coachman Rd	Severna Park	21146	11	R1 Residential
Allen Rd Townhouse Apts	210 Allen Rd	Glen Burnie	21061	11	R15 Residential
Eastport Sail Lofts	400 Chesapeake Ave	Annapolis	21403	11	City of Annapolis
	215 Hanover St	Annapolis	21401	11	City of Annapolis
	219 Hanover St	Annapolis	21401	11	City of Annapolis
8426 Miramar Road LLC	8426 Meramar Rd	Pasadena	21122	10	R5 Residential
Stoney Creek Apartments	8035 Fort Smallwood Rd.	Curtis Bay	21226	10	C3 Commercial - General
West Shore Road Apartments	7706 West Shore Rd	Pasadena	21122	10	R5 Residential

Facility Name	Facility Address	Facility City	Facility Zip	Number of Apartment	
				Units	Zoning District
Mills & Brady Enterprise Inc	1628 Annapolis Rd	Odenton	21113	9	OTC-FM Odenton Town Center Fort Meade Business Mix
Greenland Apts	8228 Ft Smallwood Rd	Curtis Bay	21226	9	C3 Commercial - General
	144 Duke Of Gloucester St	Annapolis	21401	9	City of Annapolis
	12 Maryland Ave	Annapolis	21401	9	City of Annapolis
	4019 Belle Grove Rd	Brooklyn	21225	8	R5 Residential
Stavlas Properties	601 S Camp Meade Rd	Linthicum Heights	21090	8	C1 Commercial - Local
Marley Park Apts	7735 Baltimore Annapolis Blvd	Glen Burnie	21060	8	R5 Residential
Hopewell Investments LLC	8318 Telegraph Rd	Odenton	21113	8	OTC-C Odenton Town Center Core
	124 Prince George St	Annapolis	21401	8	City of Annapolis
	9 Constitution Ave	Annapolis	21401	8	City of Annapolis
	912 Wells Ave	Annapolis	21403	8	City of Annapolis
Stavlas Properties	607 S Camp Meade Rd	Linthicum Heights	21090	7	C1 Commercial - Local
5200 Ballman LLC	5200 Ballman Ave	Brooklyn	21225	7	R15 Residential
Harbor Court Property LLC	460 Carvel Beach Rd	Curtis Bay	21226	7	R5 Residential
	202 W Maple Rd	Linthicum Heights	21090	7	R5 Residential
East Glen Burnie Plaza	7420 E Furnace Branch Rd	Glen Burnie	21060	7	C3 Commercial - General
McKnew Road LLC	719 McKnew Rd	Gambrills	21054	7	C3 Commercial - General
101 Central	101-103 Central Ave	Glen Burnie	21061	7	R10 Residential
	10 Hicks Ave	Annapolis	21401	7	City of Annapolis
	239 Prince George St	Annapolis	21401	7	City of Annapolis
AA Church Street, LLC	405 Church St	Brooklyn	21225	6	R5 Residential
	1246 Delmont Rd	Severn	21144	6	R5 Residential

Facility Name	Facility Address	Facility City	Facility Zip	Number of	
				Apartment	Zoning District
				Units	
Ridgely Realeo Apts	627 Ridgely Ave	Annapolis	21401	6	R2 Residential
Bravo's Apartments	7599 Old Telegraph Rd	Severn	21144	6	W1 Industrial Park
Magothy View Apts	321 Magothy Rd	Severna Park	21146	6	R2 Residential
Furnace Creek Exec Bldg	7125 E Furnace Branch Rd	Glen Burnie	21060	6	C3 Commercial - General
208 4th Avenue	208 Fourth Ave	Brooklyn	21225	6	R5 Residential
Thomas Apartments	8205 Ft Smallwood Rd	Curtis Bay	21226	6	C3 Commercial - General
Lynn's Rooming House	16 Harding Rd	Glen Burnie	21060	6	R5 Residential
T Group LLC	8 SW Central Ave	Glen Burnie	21061	6	TC Town Center
Tenthouse Creek Village	935A-939B West Benning Rd	Galesville	20765	6	R2 Residential
	211 Prince George St	Annapolis	21401	6	City of Annapolis
	214 Prince George St	Annapolis	21401	6	City of Annapolis
	9 Saint Marys St	Annapolis	21401	6	City of Annapolis
	1503 West St	Annapolis	21401	6	City of Annapolis
	36 Maryland Ave	Annapolis	21401	6	City of Annapolis
West Shore Apartments	21 Sumac Rd	Glen Burnie	21060	5	R5 Residential
	1872 cedar dr	Severn	21144	5	R2 Residential
	528 Kuethe Rd NE	Glen Burnie	21060	5	R5 Residential
	110 Linden Ave	Pasadena	21122	5	R2 Residential
	687 Old Herald Harbor Rd	Crownsville	21032	5	RLD Residential Low Density
KEMN Inc	610 Church St	Brooklyn	21225	5	C1 Commercial - Local
	1106 Beach Promenade	Curtis Bay	21226	5	R5 Residential
Dexter Enterprises	8469 Ft Smallwood Rd	Pasadena	21122	5	C3 Commercial - General
	803 N Hammonds Ferry Rd	Linthicum Heights	21090	5	C3 Commercial - General

Facility Name	Facility Address	Facility City	Facility Zip	Number of	
				Apartment	Zoning District
				Units	
Ashagram 1 LLC	818 Main Ave	Linthicum Heights	21090	5	R1 Residential
Annette and John Delp	60 Johnson Road	Pasadena	21122	5	R5 Residential
Hayes Rooming House	325 Rose Ave	Glen Burnie	21061	5	R5 Residential
228 Olen	228 Olen Dr	Glen Burnie	21061	5	R5 Residential
The Wax Shop	805 Crain Hwy S	Glen Burnie	21061	5	C3 Commercial - General
12 5th Ave N	12 5th Ave N	Glen Burnie	21061	5	R5 Residential
	1828 E Cedar Dr	Severn	21144	5	R2 Residential
Park Place Investments	436/438 Maple Ln, NW	Glen Burnie	21061	5	R5 Residential
Shady Side Investments	6171 - 6173 Shady Side Rd	Shady Side	20764	5	C1 Commercial - Local
	179 Prince George St	Annapolis	21401	5	City of Annapolis
	97 Cathedral St	Annapolis	21401	5	City of Annapolis
	106 Clay St	Annapolis	21401	5	City of Annapolis
	110 Clay St	Annapolis	21401	5	City of Annapolis
	191 Prince George St	Annapolis	21401	5	City of Annapolis
	126 Prince George St	Annapolis	21401	5	City of Annapolis
	100 Old County Rd	Severna Park	21146	4	R2 Residential
	4500 Ritchie Hwy	Brooklyn	21225	4	R5 Residential
	8 Short Street	Brooklyn	21225	4	R5 Residential
Fair Acres	1301 Rogers Rd	Annapolis	21409	4	R2 Residential
KEMN Inc	602 Church St	Brooklyn	21225	4	C1 Commercial - Local
Arundel Gardens	5815 Lednura Rd	Brooklyn	21225	4	C4 Commercial - Highway
	101 Summit Ave	Glen Burnie	21060	4	R5 Residential
	201 Packard Ave	Glen Burnie	21061	4	R5 Residential

Facility Name	Facility Address	Facility City	Facility Zip	Number of Apartment	
				Units	Zoning District
	801 Stewart Ave	Glen Burnie	21061	4	R5 Residential
17 9th Ave NW	17 9th ave	Glen Burnie	21061	4	R5 Residential
Bruce Supply Co	551 First Ave	Linthicum Heights	21090	4	C1 Commercial - Local
Trevillian Rentals	1236 Old Dorsey Rd	Harmans	21077	4	W2 Industrial - Light
	4100 Ritchie Hwy	Brooklyn	21225	4	R5 Residential
Manifold Apartments	1149 Mt Zion Marlboro Rd	Lothian	20711	4	C1 Commercial - Local
Cugle Apartments	7517 Old Coaling Rd	Harmans	21077	4	W2 Industrial - Light
Fair Acres	1303 Rogers Rd	Annapolis	21409	4	R2 Residential
	818 Riverside dr	Pasadena	21122	4	R5 Residential
Armstrong Apts	403 S Hammonds Ferry Rd	Linthicum Heights	21090	4	R5 Residential
	218 Asbury Rd	Pasadena	21122	4	R5 Residential
	205 S Hammonds Ferry Rd	Linthicum Heights	21090	4	R5 Residential
3 B's Bakery	8711 Ft Smallwood Rd	Pasadena	21122	4	C1 Commercial - Local
Oakdale Apts	304 Oakdale Rd	Linthicum Heights	21090	4	R5 Residential
	7508 Baltimore Annapolis Blvd	Glen Burnie	21060	4	R5 Residential
	218 Linden Ave	Edgewater	21037	4	R5 Residential
	917 Church St	Brooklyn	21225	4	C1 Commercial - Local
	1230 Old Dorsey Rd	Harmans	21077	4	W2 Industrial - Light
Furnace Branch Associates	7321 Furnace Branch Rd	Glen Burnie	21060	4	C1 Commercial - Local
Hope Home Health Care	226 Old Riverside Rd	Brooklyn	21225	4	R15 Residential
	401 Bon Air Ave	Brooklyn	21225	4	C4 Commercial - Highway
Gil Laine Apts	628 Cecil Ave N	Millersville	21108	4	RLD Residential Low Density
	4404 Ritchie Highway	Brooklyn	21225	4	C2 Commercial - Office

Facility Name	Facility Address	Facility City	Facility Zip	Number of Apartment	
				Units	Zoning District
Schafer Rentals	210 Crain Hwy S	Glen Burnie	21061	4	C2 Commercial - Office
	1 First Ave W	Glen Burnie	21061	4	R5 Residential
Schafer Rental	301 Crain Hwy s	Glen Burnie	21061	4	C2 Commercial - Office
311 Crain Hwy LLC	311 Crain Hwy SE	Glen Burnie	21061	4	C2 Commercial - Office
	1000-1002 Linda Lee Dr	Glen Burnie	21061	4	R5 Residential
Tenthouse Creek Village	961 W Benning Rd	Galesville	20765	4	R2 Residential
PLFR	216 E Charles St	Brooklyn	21225	4	R5 Residential
Semi Detacted Dwelling	7601/7603 Delmore Rd	Severn	21144	4	R1 Residential
Browns Woods Villa	173 Browns Woods Rd	Annapolis	21409	4	R1
	65 Franklin St	Annapolis	21401	4	City of Annapolis
	38 Maryland Ave	Annapolis	21401	4	City of Annapolis
	19-21 Randall St	Annapolis	21401	4	City of Annapolis
	23 Randall St	Annapolis	21401	4	City of Annapolis
Cathedral Place	101 Charles St	Annapolis	21401	4	City of Annapolis
The Glen Burnie - Cozy Studio Apartments	7745 Baltimore Annapolis Blvd	Glen Burnie	21060	4	R5 Residential
	106-108 Annapolis St	Annapolis	21401	4	City of Annapolis
	811-813 E Seagrove Rd	Glen Burnie	21060	4	C3 Commercial - General
	4207 Third St	Brooklyn	21225	3	R5 Residential
Robinson Rd Apartments	12 Robinson Rd	Severna Park	21146	3	R5 Residential
Mary's Place	1203 Meadow View Rd	Pasadena	21122	3	R5 Residential
	810 203rd St	Pasadena	21122	3	R5 Residential
1452 Odenton LLC	1452 Odenton Rd	Odenton	21113	3	OTC-T Odenton Town Center Historic

Facility Name	Facility Address	Facility City	Facility Zip	Number of	
				Apartment	Zoning District
				Units	
Dunne Wright Services	4028 Belle Grove Rd	Brooklyn	21225	3	R5 Residential
	463 Carvel Beach Rd	Curtis Bay	21226	3	R5 Residential
Magnolia Ave Apts	112 Magnolia Ave	Pasadena	21122	3	R2 Residential
Renos Restaurant	1344 Defense Hwy	Gambrills	21054	3	C1 Commercial - Local
Christ the King Church	502 Victory Way	Pasadena	21122	3	R2 Residential
Jonathan Williams	2039 Citrus Ave	Jessup	20794	3	R1 Residential
	3 Sheridan Rd	Arnold	21012	3	R5 Residential
Jason Shearer	828 Hillside Ave	Edgewater	21037	3	R5 Residential
N/A	4609 Ritchie Hwy	Brooklyn	21225	3	R5 Residential
	100 Fourth Ave SW	Glen Burnie	21061	3	R5 Residential
Valley Park Farm	2659 Solomons Island Rd	Edgewater	21037	3	R1 Residential
	1069 Baltimore Hill Rd	Crownsville	21032	3	RLD Residential Low Density
	106 1st Ave, SW	Glen Burnie	21061	3	R5 Residential
	510 Marley Station rd	Glen Burnie	21060	3	R5 Residential
	7762 West Dr	Glen Burnie	21060	3	R2 Residential
Mengshi Wu	104 Lincoln Ave SW	Glen Burnie	21061	3	R5 Residential
	407 S Hammonds Ferry Rd	Linthicum Heights	21090	3	R5 Residential
	7267 Baltimore Annapolis Blvd	Glen Burnie	21061	3	R5 Residential
	1408 S Crain Hwy	Glen Burnie	21061	3	C2 Commercial - Office
Thomas Apartments	8207 Ft Smallwood Rd	Curtis Bay	21226	3	C3 Commercial - General
	531 Baltimore Annapolis Blvd	Severna Park	21146	3	R5 Residential
	8178 Lea Rd	Pasadena	21122	3	R5 Residential
Sambrum LLC	5222 Kramme Ave	Brooklyn	21225	3	R15 Residential

Facility Name	Facility Address	Facility City	Facility Zip	Number of	
				Apartment	Zoning District
				Units	
Phelps Apartments	4439 Mountain Rd	Pasadena	21122	3	C4 Commercial - Highway
	4400 Fourth St	Brooklyn	21225	3	R5 Residential
Holy Cross Rd 603	603 Holy Cross Rd	Brooklyn	21225	3	R5 Residential
	2 Chestnut Street	Pasadena	21122	3	R2 Residential
	99 Kingbrook Rd	Linthicum Heights	21090	3	R5 Residential
	106 New Jersey Ave, NW	Glen Burnie	21061	3	R5 Residential
Manhattan Beach House	739 Stinchcomb Rd	Severna Park	21146	3	R2 Residential
	317 Hillcrest Ave	Brooklyn	21225	3	R5 Residential
Anchor Of Hope Ministries	502 Victory Way	Pasadena	21122	3	R2 Residential
	423 Creswell Rd	Brooklyn	21225	3	R5 Residential
	16 Fourth Ave SW	Glen Burnie	21061	3	R5 Residential
	4604 Ritchie Hwy	Brooklyn	21225	3	R5 Residential
	4602 Ritchie Hwy	Brooklyn	21225	3	R5 Residential
4 Carnene Drive	4 Carnene Dr	Pasadena	21122	3	R5 Residential
	775 Shelton Rd	Crownsville	21032	3	R5 Residential
	101 3rd Ave SW	Glen Burnie	21061	3	R5 Residential
Robynn Squires	7840 Baltimore Annapolis Blvd	Glen Burnie	21060	3	R15 Residential
	607 Church St	Brooklyn	21225	3	C1 Commercial - Local
	7965 Quarterfield Rd	Severn	21144	3	R5 Residential
	716 s Camp Meade Rd	Linthicum Heights	21090	3	R5 Residential
Jessup Rd Apartments	2926 Jessup Rd	Jessup	20794	3	R1 Residential
	17 2nd ave	Brooklyn	21225	3	R5 Residential
	8226 Ft Smallwood Rd	Curtis Bay	21226	3	C3 Commercial - General



Facility Name	Facility Address	Facility City	Facility Zip	Number of Apartment	
				Units	Zoning District
204 3rd Ave SW, LLC	204 3rd Ave SW	Glen Burnie	21061	3	R5 Residential
	8453 Bay Drive	Pasadena	21122	3	R5 Residential
	151 Riviera Dr	Pasadena	21122	3	R5 Residential
	10 McGuirk Drive	Glen Burnie	21060	3	R5 Residential
	319-321 E Orchard Ave	Brooklyn	21225	3	R5 Residential
ASHAGRAM 1 LLC	4600-4602 4th Street	Brooklyn	21225	3	R5 Residential
	211 Poplar Ave	Glen Burnie	21060	3	R5 Residential
	13 SW 4Th ave	Glen Burnie	21061	3	R5 Residential
Twin Oaks	30 W Jones Station Rd	Arnold	21012	3	R2 Residential
	7689 Baltimore Annapolis Blvd	Glen Burnie	21061	3	C3 Commercial - General
Demetrius Filipidis	411 N Crain Hwy	Glen Burnie	21061	3	C3 Commercial - General
	1072 Riverbay Dr	Annapolis	21409	3	R5 Residential
	700 Bay Ridge Ave	Annapolis	21403	3	City of Annapolis
	5321 Brookwood Rd	Brooklyn	21225	2	R15 Residential
W R M Properties LLC	902 1st Street	Brooklyn	21225	2	R15 Residential
	5103 Brookwood Road	Brooklyn	21225	2	R15 Residential
Marine Building	4815 Riverside Drive	Galesville	20765	2	MC Heavy Commercial Marina
Nicholson Properties	4 Nicholson Drive	Pasadena	21122	2	R2 Residential
Jessup House	2912 Jessup Road	Jessup	20794	2	R1 Residential
	5106 Brookwood Road	Brooklyn	21225	2	R15 Residential
Bluewater Captial, Inc	485 Deale Road	Deale	20751	2	MA2 Light Commercial Marina
	1342 Sleepy Hollow Road	Severn	21144	2	RLD Residential Low Density

Facility Name	Facility Address	Facility City	Facility Zip	Number of Apartment	
				Units	Zoning District
GMM Properties, LLC (Ghishin St Denis)	1531 Florida Ave	Severn	21144	2	R5 Residential
8129 Woodholme Circle	8129 Woodholme Circle	Pasadena	21122	2	R2 Residential
	4501 Ritchie Hwy	Brooklyn	21225	2	R5 Residential
113 Central Ave	113 Central ave	Glen Burnie	21061	2	R5 Residential
5223 Kramme Ave	5223 Kramme Ave	Brooklyn	21225	2	R15 Residential
	12 Madary Road	Severna Park	21146	2	R2 Residential
	317 South Drive	Severna Park	21146	2	R5 Residential
	4921 Brookwood Road	Brooklyn	21225	2	R15 Residential
Cleveland Apartments	409 Cleveland Road	Linthicum Heights	21090	2	R5 Residential
	5019 Brookwood Road	Brooklyn	21225	2	R15 Residential
308 Milton Ave Glen Burnie	308 Milton Ave	Glen Burnie	21061	2	R5 Residential
	106 11th Ave	Brooklyn	21225	2	R5 Residential
Barbara Stein	6009 Ritchie Hwy	Brooklyn	21225	2	R10 Residential
Karl Smith	2 Ballman Court	Brooklyn	21225	2	R15 Residential
	5014 Brookwood Road	Brooklyn	21225	2	R15 Residential
111 Forestdale Ave	111 Forestdale Ave	Glen Burnie	21061	2	R5 Residential
	520 Delmar Ave	Glen Burnie	21061	2	R5 Residential
	202 4th Avenue	Brooklyn	21225	2	R5 Residential
	919 Victory Avenue	Brooklyn	21225	2	R15 Residential
Pocahontas Marina	3365 Pocahontas Drive	Edgewater	21037	2	MB General Commercial Marina
	211 Sycamore Road	Curtis Bay	21226	2	R5 Residential
	10 Oak Lane S W	Glen Burnie	21061	2	R5 Residential

Facility Name	Facility Address	Facility City	Facility Zip	Number of	
				Apartment	Zoning District
				Units	
	144 W Meadow Road	Brooklyn	21225	2	R15 Residential
Marsteller Property	112 6th Ave, NE	Glen Burnie	21060	2	R5 Residential
18 Ninth Avenue, N W	18 Ninth Avenue, N W	Glen Burnie	21061	2	R5 Residential
	212 E 11th Ave	Brooklyn	21225	2	R15 Residential
206 E 11th Ave	206 E 11th Ave	Brooklyn	21225	2	R15 Residential
	212 N Hammonds Ferry Road	Linthicum Heights	21090	2	R5 Residential
	100 East 11th Street	Brooklyn	21225	2	R15 Residential
	1706 Ridgley Ave	Edgewater	21037	2	R5 Residential
Chewning Family Trust	1475 Berger Street	Odenton	21113	2	OTC-FM Odenton Town Center Fort Meade Business Mix
	5322 Brookwood Road	Brooklyn	21225	2	R15 Residential
Athey Property	385 Eagle Hill Drive	Pasadena	21122	2	RLD Residential Low Density
	108 Greenway NW	Glen Burnie	21061	2	R5 Residential
400 S Hammons Ferry Rd	400 S Hammons Ferry Rd	Linthicum Heights	21090	2	R5 Residential
	26 East St	Annapolis	21401	2	City of Annapolis
	56 Clay St	Annapolis	21401	2	City of Annapolis
	77 W Washington St	Annapolis	21401	2	City of Annapolis
1201 West Street	1201 West St	Annapolis	21401	2	City of Annapolis
	7717 Baltimore Annapolis Blvd	Glen Burnie	21060	2	C1 Commercial - Local
	4950 Brookwood Road	Brooklyn	21225	2	R15 Residential
	12 Wallace Ave	Brooklyn	21225	2	R5 Residential
	1 Ballman Court	Brooklyn	21225	2	R15 Residential
733 B & A Blvd	733 Baltimore Annapolis Blvd	Severna Park	21146	2	R5 Residential

Facility Name	Facility Address	Facility City	Facility Zip	Number of Apartment	
				Units	Zoning District
	5214 Brookwood Road	Brooklyn	21225	2	R15 Residential
7730 Overhill Road	7730 Overhill Road	Glen Burnie	21060	2	R5 Residential
7142 B&A Blvd	7142 Baltimore Annapolis Blvd	Glen Burnie	21061	2	R5 Residential
	1474 snug Harbor Road	Shady Side	20764	2	C1 Commercial - Local
	5002 Brookwood Rd	Brooklyn	21225	2	R15 Residential
Cottage	3879 Birdsville Road	Davidsonville	21035	2	RA Rural Agricultural
	1600 Riverdale Drive	Edgewater	21037	2	R5 Residential
Shirley Youngbbar	5227 Kramme Ave	Brooklyn	21225	2	R15 Residential
	8456 Garland Road	Pasadena	21122	2	R2 Residential
	100 North Broadview Blvd	Glen Burnie	21061	2	R5 Residential
	5226 Kramme Ave	Brooklyn	21225	2	R15 Residential
	103 5th Avenue	Glen Burnie	21061	2	C3 Commercial - General
Bruce Saylor	2222 Shore Drive	Edgewater	21037	2	R5 Residential
	1508 Park Lane	Pasadena	21122	2	R1 Residential
	44 Clay St	Annapolis	21401	2	City of Annapolis