



— *Making a difference, together* —

# Jug Bay Environmental Education Center Public Meeting – Preconstruction

February 4, 2025



DPWandYOU.com

# Important Meeting Information

Tonight's meeting will be audio recorded

- Questions can be typed in the Q and A.
- All questions will be answered at the end of the presentation.

The audio recording will be posted to the project website located here:

<https://www.aacounty.org/recreation-parks/capital-projects/jug-bay-environmental-education-center>

# Meeting Agenda

- Team Introductions
- Project Overview
- Construction Schedule
- Contact Information

# Project Team

Julio Jimenez

Project Manager and Point of Contact  
Department of Public Works  
pwjime24@aacounty.org

Alison Woodfield

Project Manager  
Department of Recreations and Parks  
rpwood55@aacounty.org

Nichole Penick

Construction Manager  
DFI, Inc.  
Nichole.penick@dfiengineering.com

Donnie Gandee

Project Manager (Contractor)  
Rainbow Construction

# Construction Overview

- Paved Parking Lot with Standard and Accessible Spaces
- Education Center Pavilion
- Cabins
- Bathhouse
- Fire Pit with Curved Bench
- Walking Paths and Trails

# Jug Bay Environmental Center Area Map

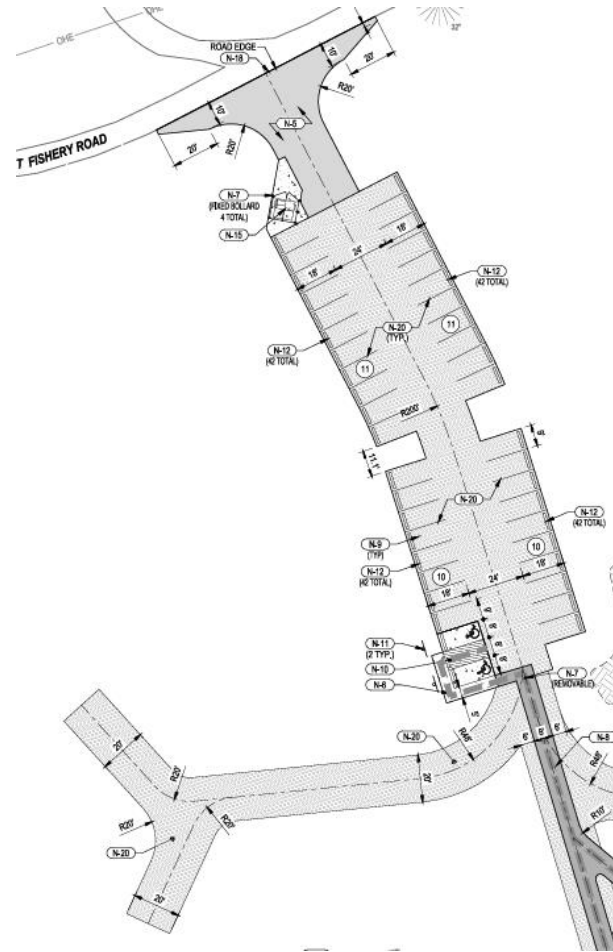


# Site Plan



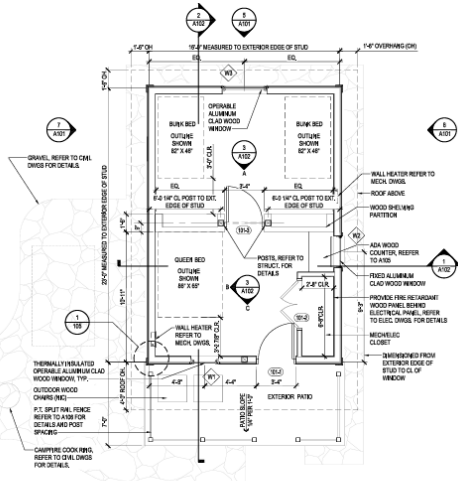
# Paved Parking Lot

- 38 Standard Spaces
- 2 Accessible Spaces w/ Van Accessibility
- Pedestrian Walkway connection to entire site

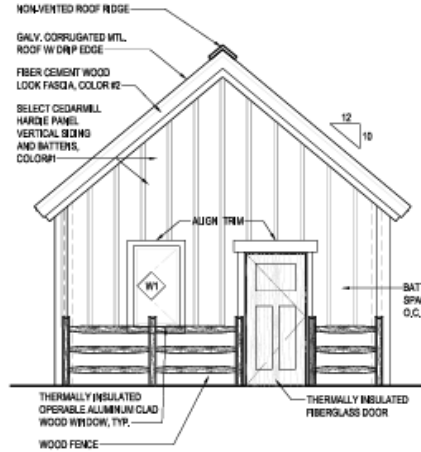




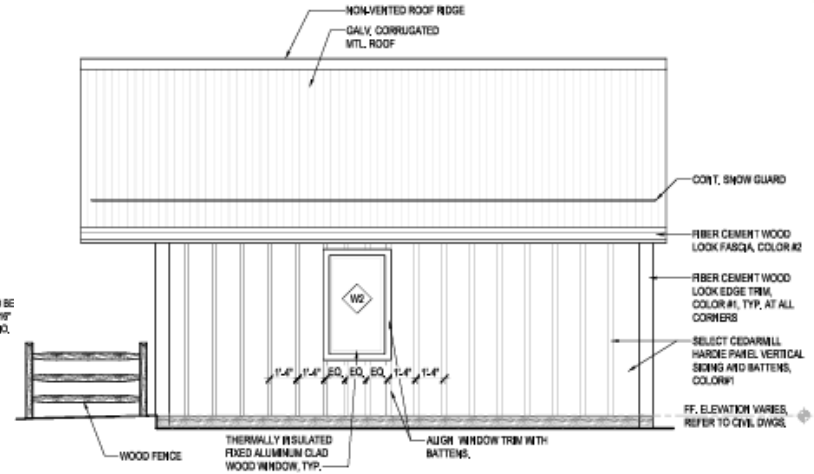
# Education Center Cabins



**1** CABIN FLOOR PLAN  
SCALE: 1/4"=1'-0"



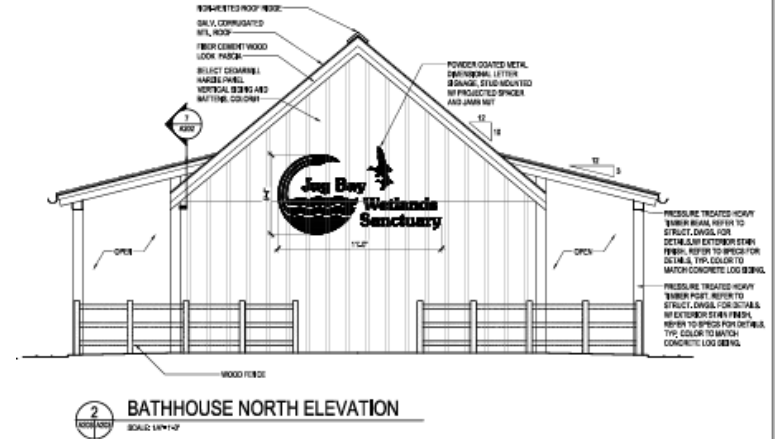
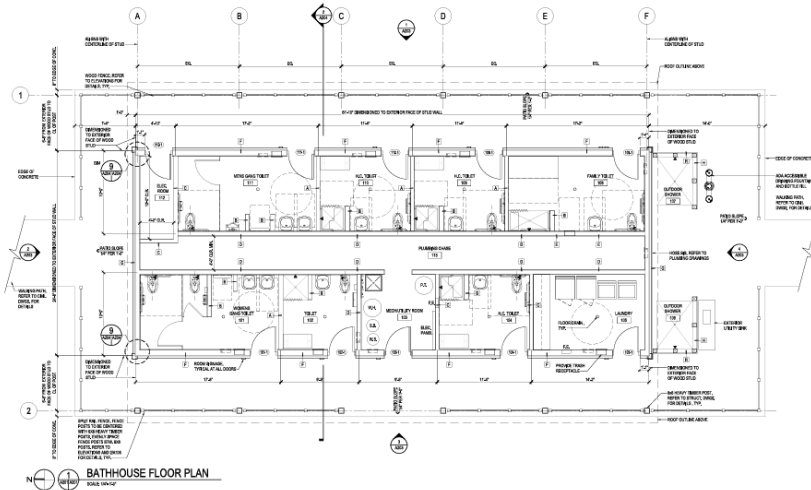
**4** CABIN FRONT ELEVATION  
SCALE: 1/4"=1'-0"



**6** CABIN SIDE ELEVATION  
SCALE: 1/4"=1'-0"

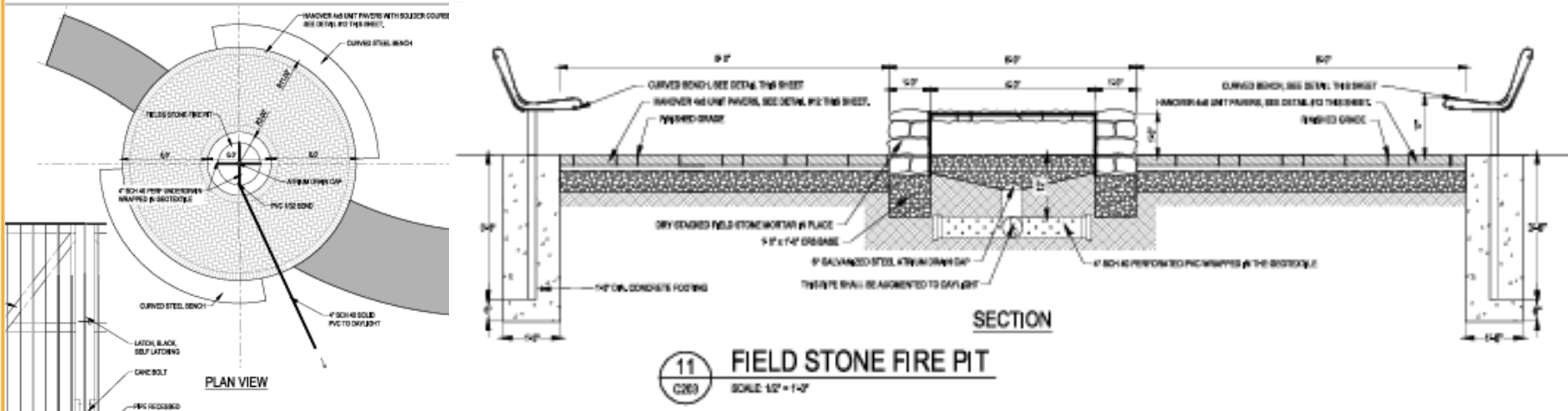
Eight (8) Cabins which can accommodate at least 3 guests at a time

# Education Center Bath House



- Men's and Women's Restrooms
- 4 Individual Restrooms
- Family Restroom w/ Changing Table
- 2 Outdoor Showers
- Laundry

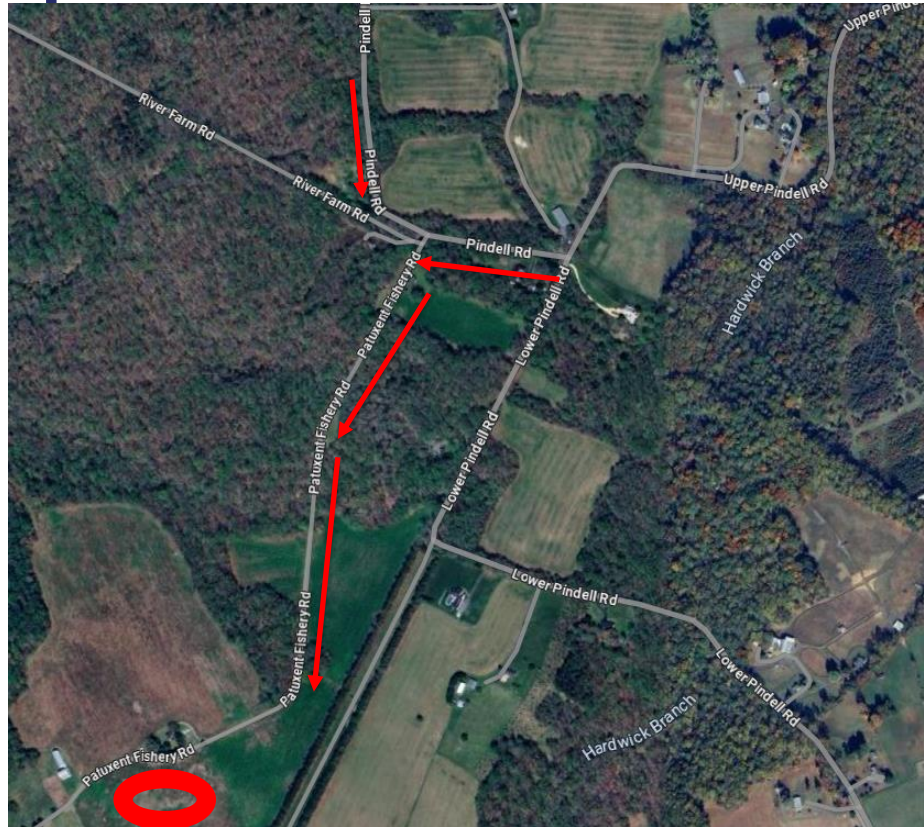
# Education Center Fire Pit



Dual Curved Steel Bench along Sides

# Traffic and Noise Impacts

- Work area is in private road – Patuxent Fishery Road
- No anticipated roadway closures
- Work vehicles coming through Pindell Road
- Typical work hours are 7:00 AM to 4:00 PM, Monday to Friday



# Proposed Construction Schedule

- Anticipated Start of Construction: February 2025
- Anticipated Construction Completion: Fall 2025

**Questions?**

# Follow DPW



**FACEBOOK**

@annearundeldpw



**YOUTUBE**

Anne Arundel County DPW



**INSTAGRAM**

@annearundelcountypw



**LINKEDIN**

Anne Arundel County  
Department of Public Works



**TWITTER**

@AACoDPW



**DPW & YOU**



## Bureau of Utility Operations

---

**24-Hour Emergency Water Service:**  
(410) 222-8400  
**Billing Inquiries:** (410) 222-1144



## Bureau of Waste Management Services

---

**Bulk Trash Service / Curbside Collections:** (410) 222-6100



## Bureau of Engineering

---

**General Inquiries:** (410) 222-7500



## Bureau of Highways

---

**General Inquiries:** (410) 222-7321  
**Snow Line:** (410) 222-4040  
**Email:** [hwyscustomer@aacounty.org](mailto:hwyscustomer@aacounty.org)



## Bureau of Watershed Protection and Restoration

---

**General Inquiries:** (410) 222-4240

## Customer Relations

---

**General Inquiries:** (410) 222-7582  
**Email:** [pwcust00@aacounty.org](mailto:pwcust00@aacounty.org)

