

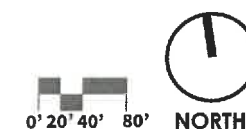


## LEGEND

- ① SHELTER FOR PORTABLE TOILET
- ② EXISTING DOG PARK
- ③ MAINTENANCE/STORAGE BUILDING
- ④ STORMWATER COLLECTION AREA
- ⑤ PROPOSED PAVED TRAIL (ADA ACCESSIBLE)
- ⑥ 4' MULCH TRAIL, TYP.
- ⑦ COUNCIL RING
- ⑧ LOOKOUT POINT
- ⑨ NEIGHBORHOOD CONNECTION
- ⑩ SOUTH RIVER OVERLOOK
- ⑪ POLLINATOR MEADOWS
- ⑫ PARKING LOT
- ⑬ LODEN POND OVERLOOK PLATFORM
- ⑭ COVERED RAIN SHELTER WITH BENCH
- ⑮ EXISTING PAVED TRAIL
- ⑯ PICNIC AREA WITH PICNIC TABLES

## LEGEND

- Critical Area
- Property Line
- Shoreline Restoration
- - - Split Rail Fence
- Proposed Tree
- Proposed Plantings



THIS PLAN IS PRELIMINARY AND SUBJECT TO CHANGE

## MASTER PLAN



**TRANSYSTEMS**



## QUIET WATERS RETREAT

PREPARED FOR: ANNE ARUNDEL COUNTY RECREATION AND PARKS



TRAIL TYPOLOGY AND SECTIONS

PLACES



10' ASPHALT PEDESTRIAN/VEHICLE TRAIL

This path is primarily intended for pedestrian use, with limited vehicle access for maintenance vehicles that need to reach the restrooms and storage building within the park.



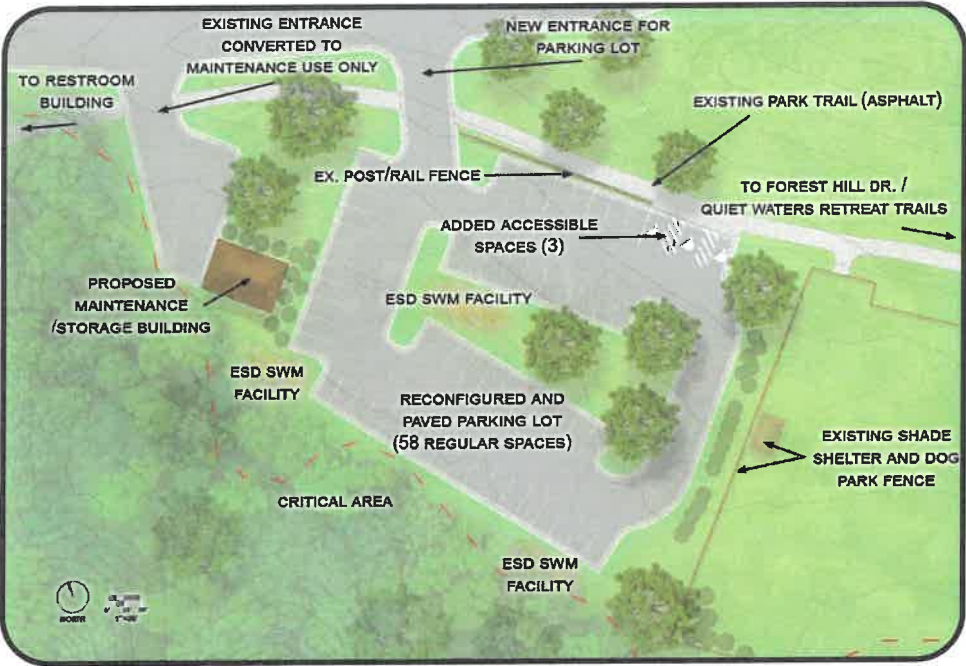
8' ASPHALT PEDESTRIAN TRAIL

This path is designed for pedestrian use and provides access to all park amenities. It is ADA accessible.

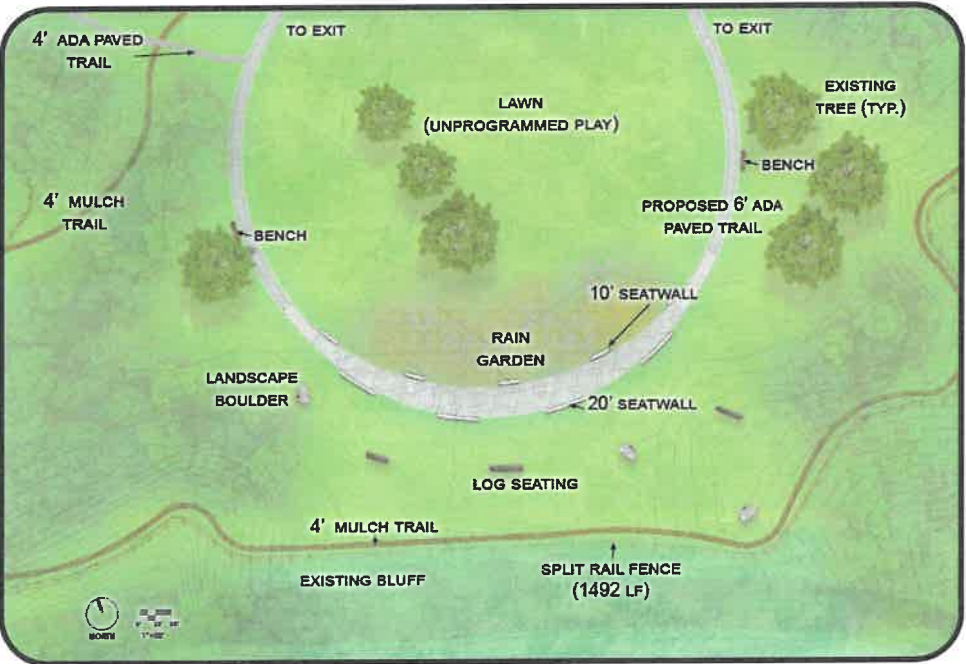


4' MULCH TRAIL

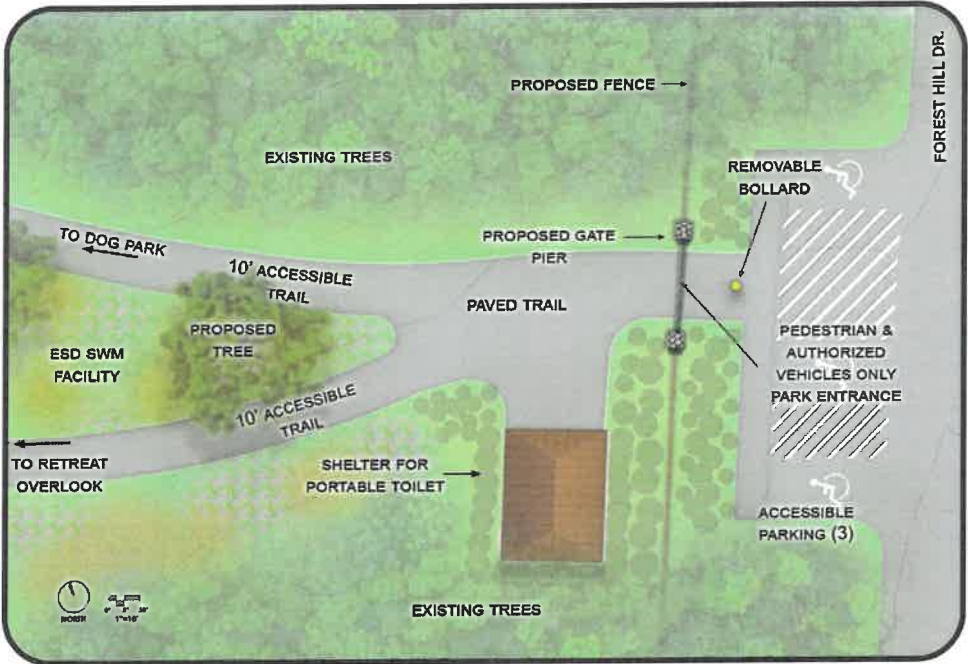
This path is intended for pedestrians and offers access to the smaller overlook areas. Due to steep slopes, most of these trails will not be ADA accessible.



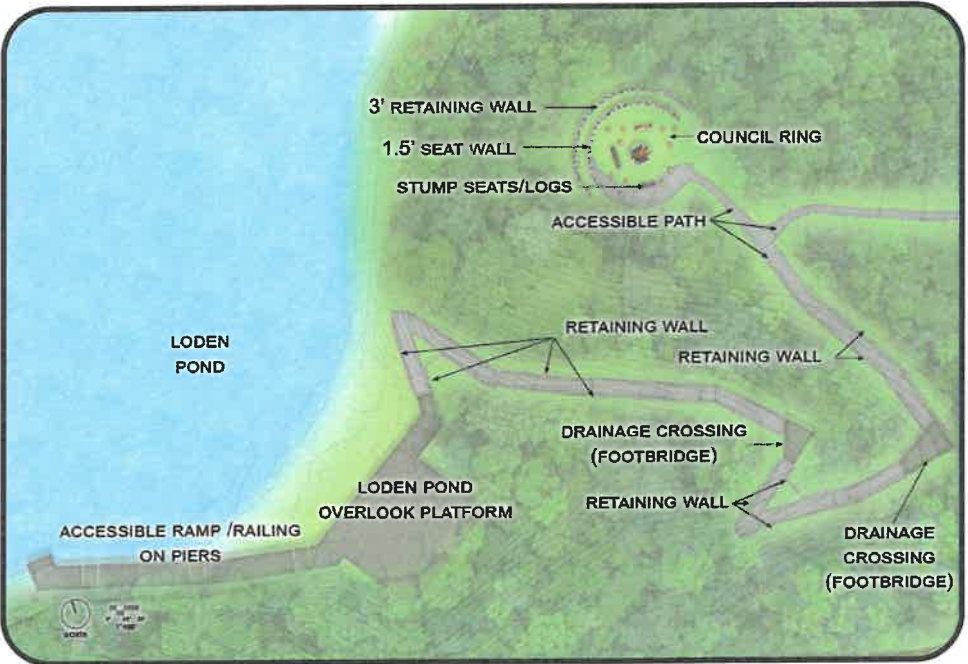
PARKING LOT AND MAINTENANCE BUILDING



RETREAT ACCESSIBLE OVERLOOK



COMFORT STATION /FOREST HILLS ENTRANCE



BOATHOUSE DECK AND RAMP TO DOCK

THIS PLAN IS PRELIMINARY AND SUBJECT TO CHANGE

CONCEPT BOARD



QUIET WATERS RETREAT

PREPARED FOR: ANNE ARUNDEL COUNTY RECREATION AND PARKS